



# Albury to Illabo Community Consultative Committee

Wagga Wagga sub-committee

Wednesday 5 November 2025

INLAND  
RAIL 

# Acknowledgement of Country

Inland Rail acknowledges the Traditional Custodians of the land on which we meet today, and pay our respects to their Elders past and present. We extend that respect to Aboriginal and Torres Strait Islander peoples here today.

**INLAND  
RAIL** 





# Conflicts of interest

Garry West – Chair CCC

**INLAND  
RAIL** 



# Agenda

- ▶ Actions from previous meeting
- ▶ Program and Project update
- ▶ Precinct Updates
  - Lockhart Shire Council
  - Junee Shire Council
  - Wagga Wagga City Council
- ▶ Community Update
- ▶ General Business

# Actions from Previous Meetings



No actions from previous meeting

# Introduction/Presenters

**Malcolm Clark**

Project Director - A2I/S2P

**Rachael Labruyere**

Environmental Manager – A2P

**Kate Hardy**

Stakeholder Engagement Lead - A2I

INLAND  
RAIL 







# Program and Project Update

Malcolm Clark – Project Director A2I/S2P

INLAND  
RAIL 



# Adjacent Projects Update

## Illabo to Stockinbingal (I2S)

- Fencing of the rail corridor commenced at multiple locations with priority to secure the alignment and establish a clear and safe working area with direct access for site teams
- Establishing site compounds along the alignment
- Low impact works such as survey works, site investigations, cultural investigations and preparation of site laydowns and compound locations are nearing completion
- Temporary workers accommodation - works are progressing well, the camp kitchen, laundry and first 100 beds installed. In operation since September possession.
- Community Information Centre in Cootamundra opened on 8th Oct 25

## Stockinbingal to Parkes (S2P)

- Overhead wires investigations underway with relocations to commence in the new year



Temporary Workers Accommodation I2S



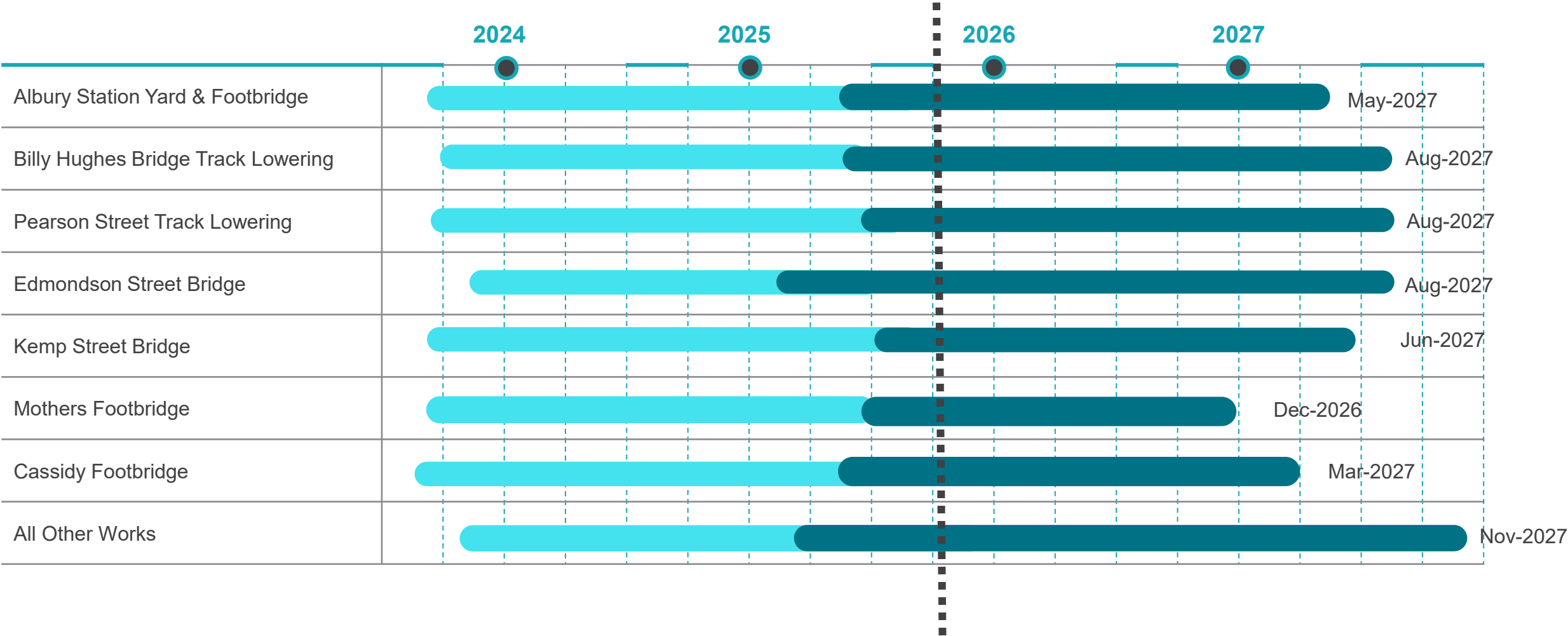
Recreation  
& wet mess



# A2I Program

Design

Construction

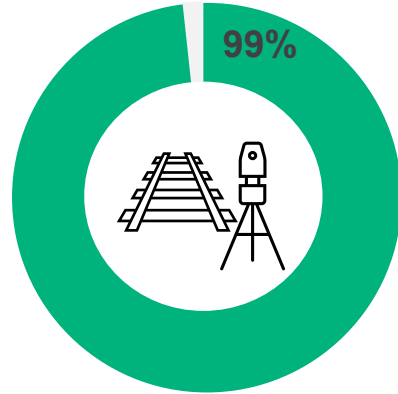


# A2I Design Progress

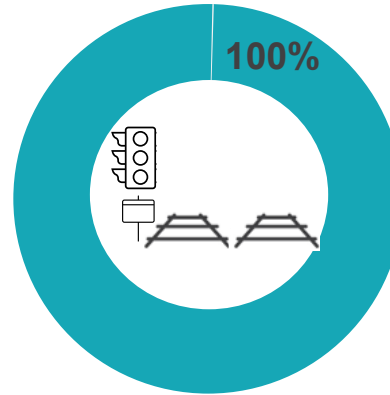
Martinus  
Design – ITC  
Contract

INLAND  
RAIL

## Clearance Sites

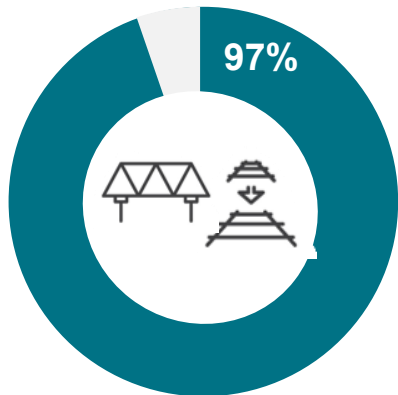


## Junee to Illabo

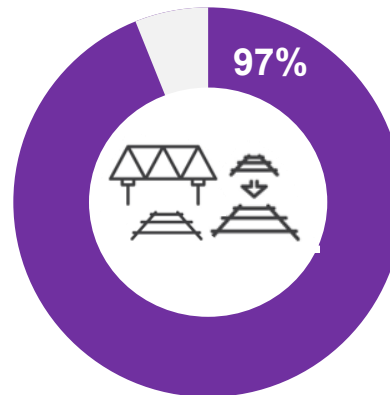


Overall Design Progress:  
97% Complete

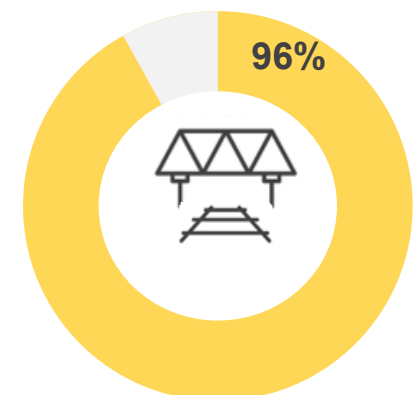
## Albury Sites



## Wagga Sites



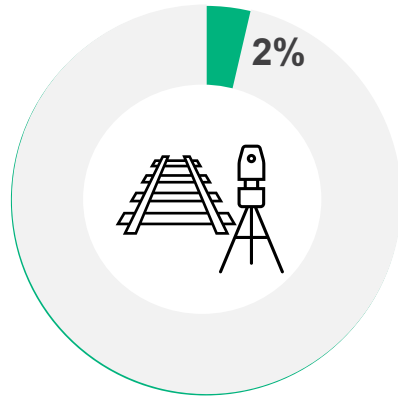
## Junee Sites



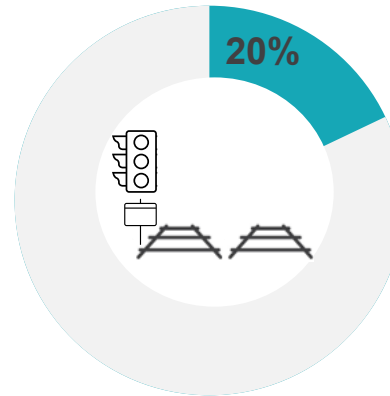
# A2I Construction Progress

**Martinus  
Construction  
– ITC  
Contract**

## Clearance Sites

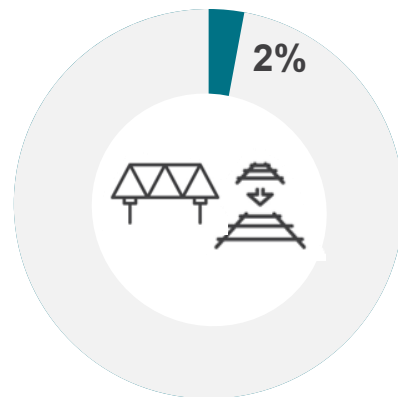


## Junee to Illabo

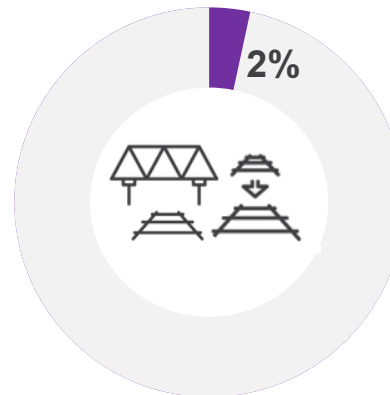


**Overall Construction Progress:  
30% Complete**

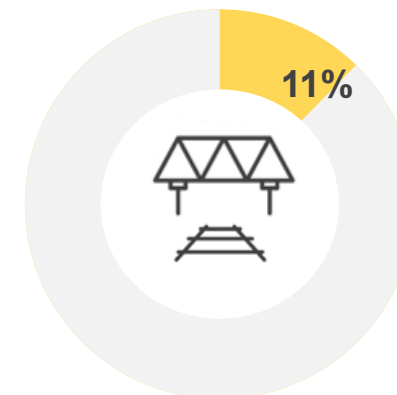
## Albury Sites



## Wagga Sites



## Junee Sites





# Track Talk: Albury to Illabo progress update from September possession





# Precinct Update – Lockhart Shire

INLAND  
RAIL 





# September Possession

The Rock signalling works completed:

- ▶ Cut over cable for signal modifications
- ▶ Test affected signalling infrastructure
- ▶ Install CSR between disconnection box and signal hut
- ▶ Modify signalling cables on the gantry post



## Lookahead – Lockhart Shire

| Timing            | Activity  |
|-------------------|---|
| November 2025     | Site establishment and mobilisation at The Rock       |
| December 6-7 2025 | Possession – The Rock gantry knee braces modification |
| 2026              | Yerong Creek – level crossing and mainline slew       |



# Community Engagement in Lockhart Shire

- ▶ Spirit of the Land Festival – 217 visitors
- ▶ The Rock Show – 130 visitors
- ▶ Council monthly monitoring meetings
- ▶ Councillor Briefing – November 17



# Inland Rail Skills Academy

2019 – September 2025

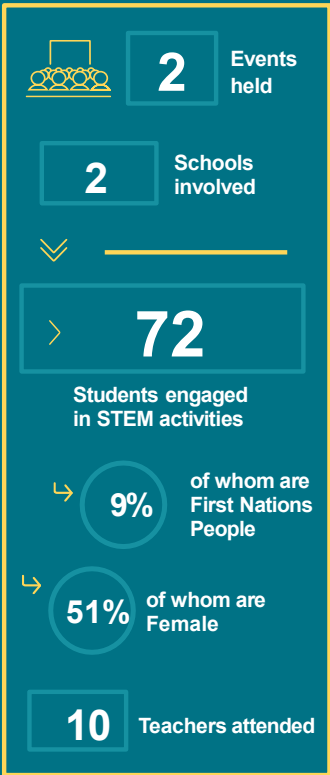
Lockhart Shire LGA



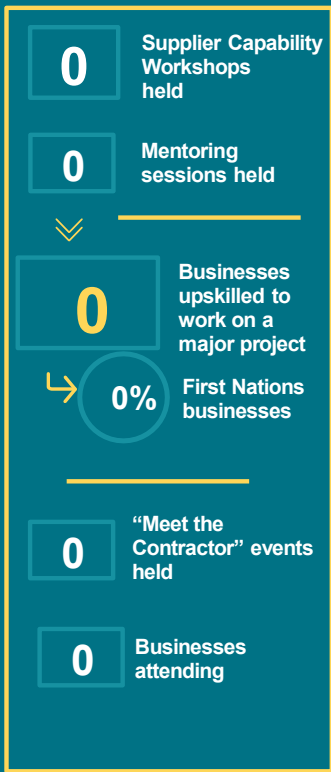
INLAND  
RAIL

We invest in Inland Rail alignment communities by partnering with experts to grow a local supply of businesses and future workers equipped for the 21<sup>st</sup> century.

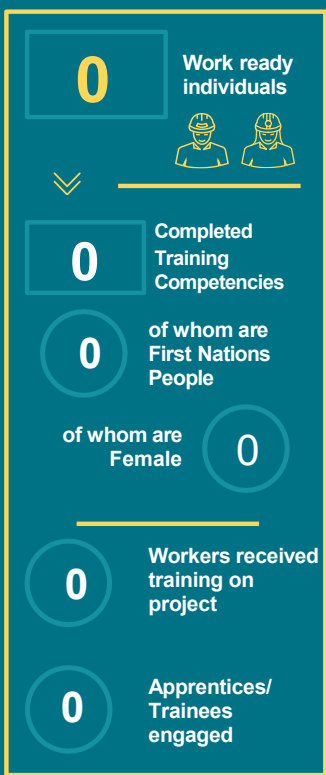
  
**STEM PARTNERSHIPS**



  
**UPSKILLING LOCAL BUSINESSES**



  
**SKILLS TRAINING**



  
**COMMUNITY GRANTS**



  
**PROJECT WORKFORCE**



  
**PROJECT PROCUREMENT**







# Precinct Update – Junee Shire

**INLAND  
RAIL** 





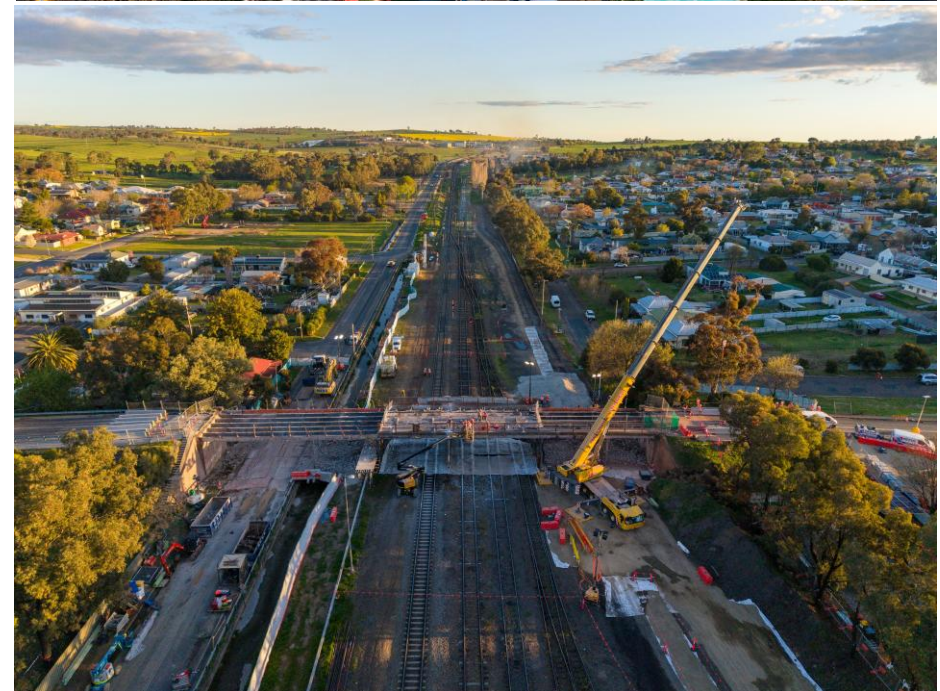
# September Possession

## Removal of Kemp St Bridge

- ▶ Road closures in place from September 5
- ▶ 230 workers on site
- ▶ Round the clock construction activities – approx. 5000 hours of work
- ▶ Removal of 6 spans and 5 trestles of the bridge
- ▶ Approximately 100 tonnes of steel and 375 tonnes of concrete

## Junee to Illabo

- ▶ Over 4km of track slewing carried out
- ▶ 2 culverts replaced
- ▶ Approximately 5000 tonnes of ballast used



# Kemp St Bridge demolition



# Junee Lookahead

## Kemp St Bridge

- ▶ Preparations works around Kemp St Bridge site to allow clearance for new works envelope and crane activities.
- ▶ Mid November:
  - further removal of bridge segments (brick abutments, guardrails, kerbing, footpath and rail corridor lighting)
  - establishment of ancillary facility at Wrights Oval - Pedestrian access around perimeter remains (6m clearance)
  - establishment of stockpile area near Junee Rest House – pending approvals
- ▶ December possession: substructure works

## Junee Yard

- ▶ Geotechnical drilling and signalling works
- ▶ Removal of pedestrian footbridge during December possession
- ▶ Driver change platform works

## Olympic Highway Bridge

- ▶ Geotechnical drilling
- ▶ Site establishment to commence late November

## Junee to Illabo

- ▶ Corridor slashing to reduce fire risk
- ▶ Out of hours work continuing on track widening activities
- ▶ Traffic control will be seen at some locations to support the works access

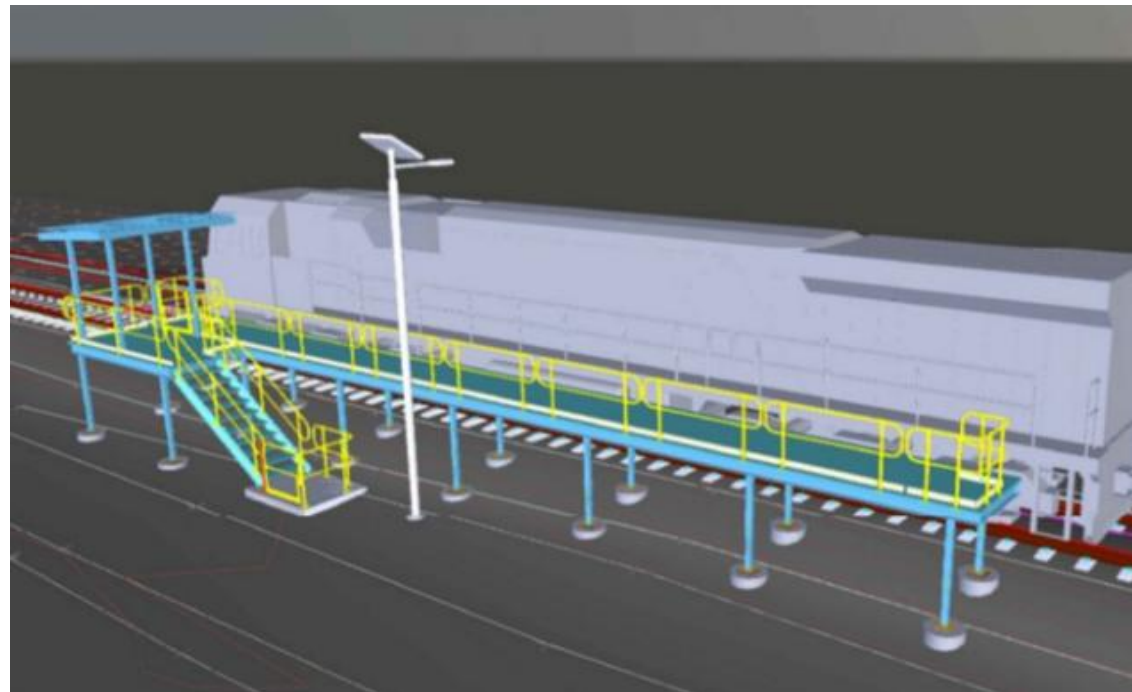


# Planning and Environment - Junee

- ▶ Alternative driver change locations have been identified in Junee
- ▶ Construction and Operation of the platforms was detailed in the Environmental Approval Documents to be carried out under separate approvals
- ▶ A Review of Environmental Factors (REF) developed by ARTC is being undertaken to carry out these works
- ▶ Community engagement (doorknocking of immediately impacted residents was undertaken week commencing 3 November
- ▶ Community information session to be held Saturday 8 November at the Junee Library and Wednesday 19 November 2025 at the Junee Recreation Centre



Driver Change Platform proposed locations



Example Driver Change Platform

# Community Engagement - Junee

| Date           | Engagement   |
|----------------|--|
| August 7       | Council Monthly Monitoring meeting                                       |
| August 11-13   | Door knocks – Kemp St bridge visualisations                              |
| August 12-13   | Stakeholder meetings – Kemp St bridge visualisations, traffic management |
| August 19      | Councillor briefing  |
| August 19      | Junee Rotary Club briefing   |
| August 20-22   | Community Information sessions (Railway Café, IGA and Library)           |
| September 1-12 | Door knocks – respite and alternate accommodation                        |
| September 4    | Council Monthly Monitoring meeting                                       |
| September 4    | Junee and Wagga Fire and Rescue units                                    |
| October 11     | Illabo Show – 70 visitors  |
| October 22     | Community Information Session – Railway Cafe                             |
| October 25     | Junee Show – 130 visitors  |

# Community Engagement

## Upcoming Engagement:

| Date        | Engagement  |
|-------------|---|
| November 8  | Community Information Session - Library           |
| November 18 | Councillor Briefing                               |
| November 19 | Community Information Session – Recreation Centre |
| November 29 | Community Information Session - Library           |

## Successful Community Grants:

- ▶ Junee Jokers Bowling Club
- ▶ Junee Swimming Club
- ▶ Junee Regenerative Landcare Inc





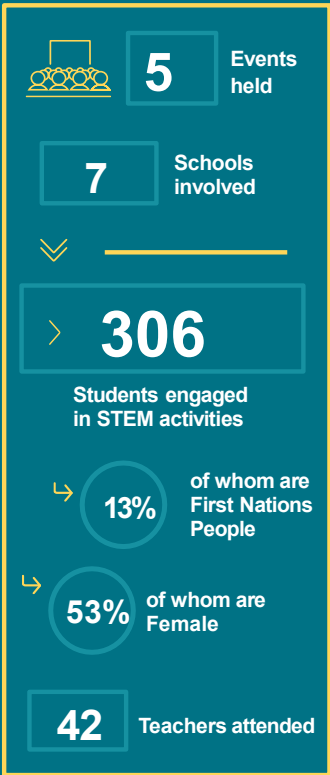
# Inland Rail Skills Academy

2019 – September 2025    Junee LGA



We invest in Inland Rail alignment communities by partnering with experts to grow a local supply of businesses and future workers equipped for the 21<sup>st</sup> century.

STEM PARTNERSHIPS



UPSKILLING LOCAL BUSINESSES



SKILLS TRAINING



COMMUNITY GRANTS



PROJECT WORKFORCE



PROJECT PROCUREMENT







# Precinct Update – Wagga Wagga

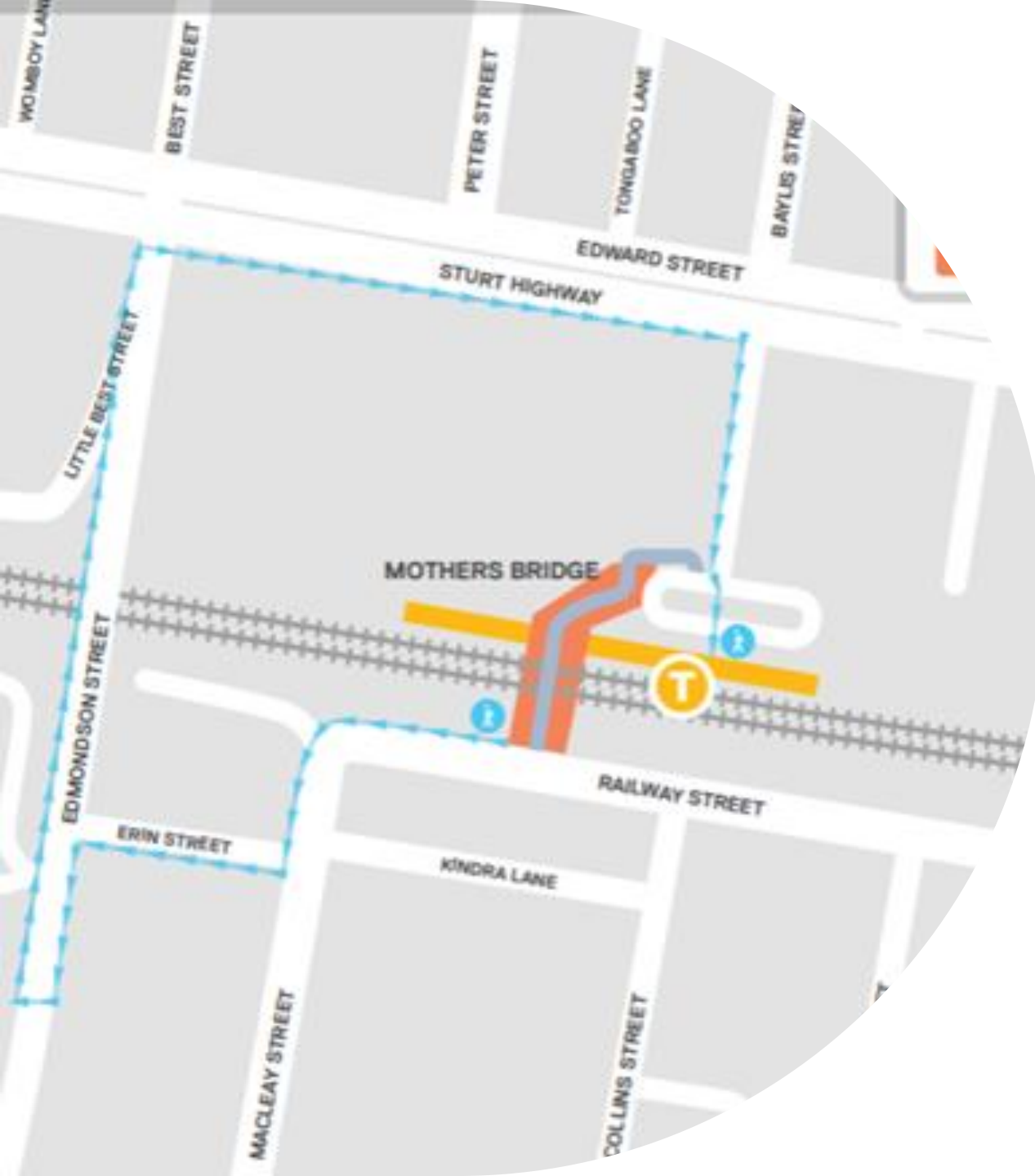
INLAND  
RAIL 





# Mothers Bridge – Wagga Wagga Station

- ▶ Installation of temporary ramp scaffolding for temporary access to Mothers Bridge (Station side) commenced October 8
- ▶ Mothers Bridge closed 1-2 November to remove station side ramp and attach temporary ramp to existing bridge deck
- ▶ Pedestrian detours in place for closure period
- ▶ Access lane to Multicultural Council closed to traffic and pedestrians November 8-9



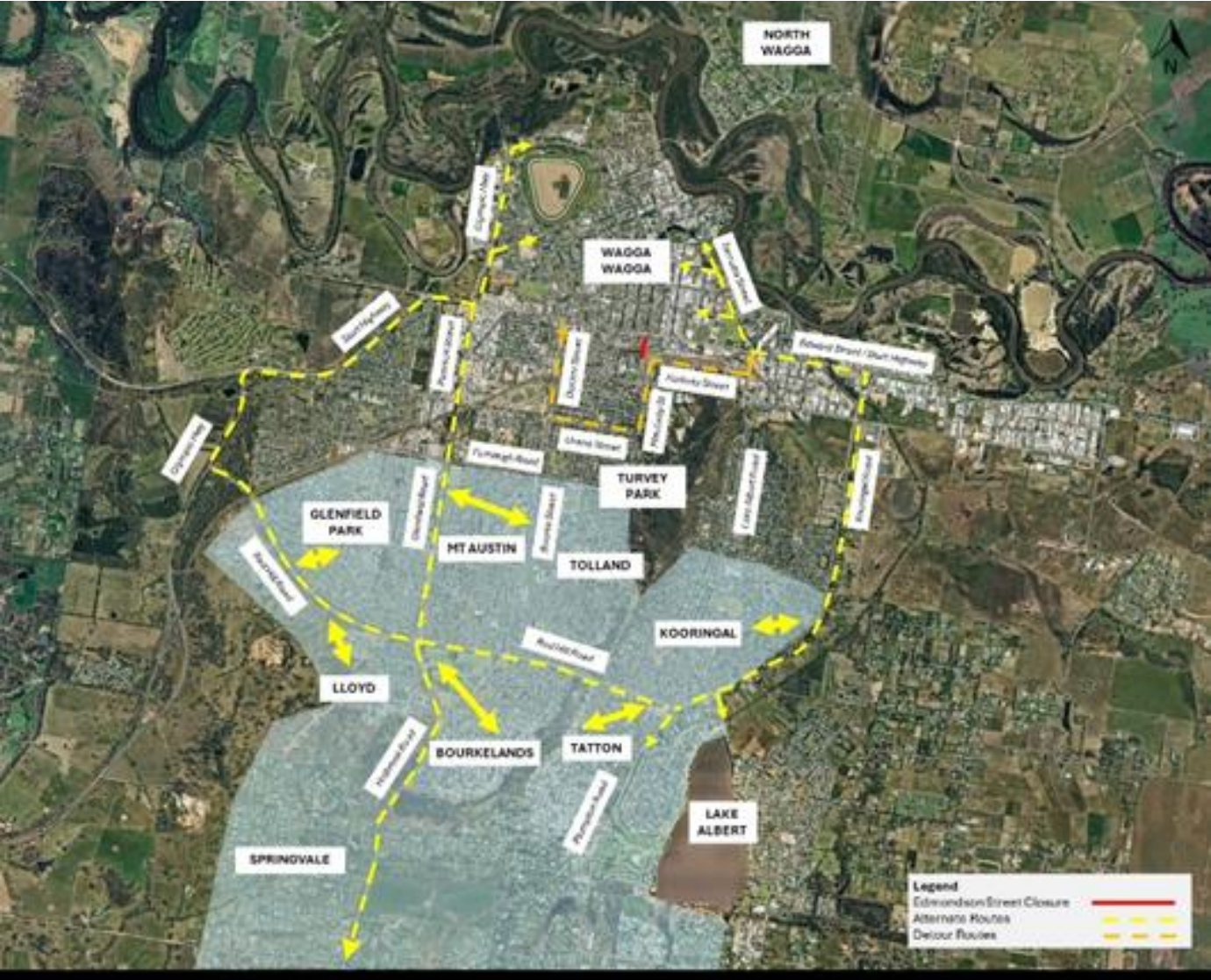


# Trial Closure of Edmondson Street Bridge

- ▶ **Traffic trial commencing 22 November**
  - Traffic barriers and traffic light phasing in place to restrict pedestrian and vehicle access on Edmondson Street bridge during the trial period
- ▶ **Temporary Traffic Monitoring Centre**, operated by representatives from Inland Rail, Martinus, Transport for NSW, Wagga Wagga City Council and emergency services, will monitor road network performance throughout the trial period
  - **Integrated CCTV cameras** installed at key intersections and locations across Wagga Wagga to monitor traffic in real-time
  - **Trailer mounted integrated cameras** positioned in prominent locations across the Wagga road network



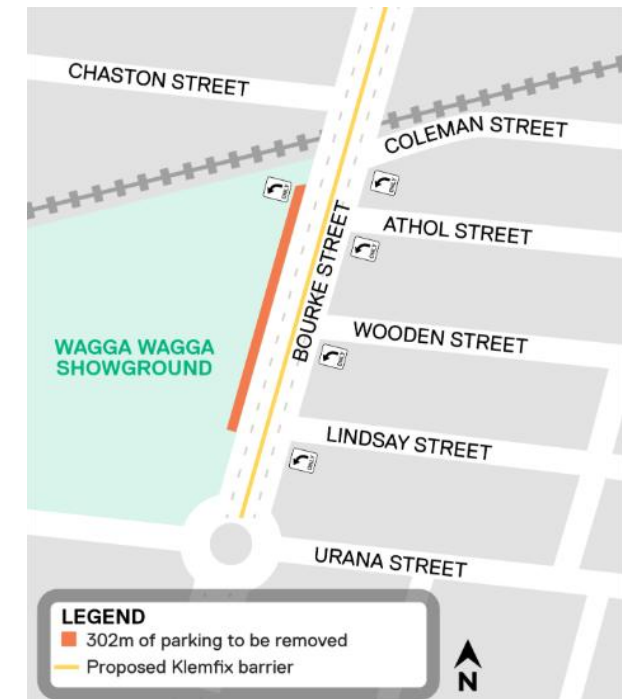
# Traffic changes and detours





# Installation of traffic mitigations

| Installation dates | Mitigations   |
|--------------------|---|
| November 3-7       | No stopping' and 'bus zone' signage will be installed along Erin and Coleman Streets to support the new bus timetables            |
| November 10-14     | A temporary roundabout, pedestrian refuges and new line markings will be installed at the Macleay and Coleman Street intersection |



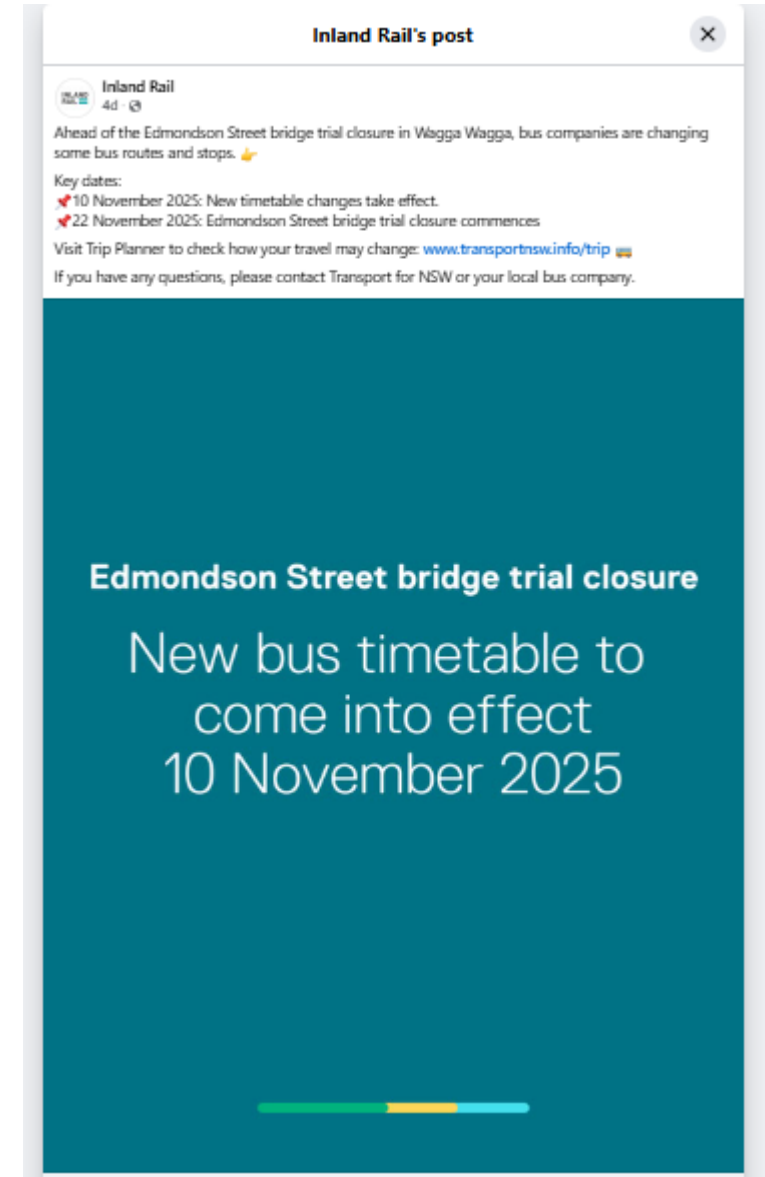


# Communication of trial and traffic changes

- ▶ Works notifications
- ▶ Monthly project update notification
- ▶ Community information pop-ups
- ▶ Social media campaigns
- ▶ Press ads
- ▶ Media – weekly leading into the trial; daily media statements during first week of trial
- ▶ Core flutes – detours for vehicles and pedestrians; ‘what is happening?’
- ▶ Traffic hot spot dispersion animation
- ▶ Website landing page
- ▶ Project newsletters
- ▶ Notification magnets
- ▶ VMS boards

# Changes to bus services

- ▶ From **Monday 27 October**, new timetables available on the Transport for NSW Trip Planner website.
- ▶ From **Monday 10 November** 2025, new timetables will take effect, with adjusted pick-up and drop-off times for some Wagga Wagga schools.
- ▶ All affected schools were offered a meeting with Inland Rail to discuss the impacts on their school, focusing on changes to supervision in the morning or afternoon, and bus arrivals after the bell.
  - Meetings were held with South Wagga Public School, Kildare Catholic College, Wagga Wagga High School, Henschke Primary School, Lutheran School, Sturt Public School, Wagga Wagga Christian College, Koorringal High School, Sacred Heart Primary School, St Joseph's Primary School
- ▶ All affected schools received a detailed document outlining the changes for each bus company, this document has been shared via existing school platforms to parents/families
- ▶ Trip Planner is the 'source of truth' as it houses the most up to date changes



# Community Engagement – Wagga Wagga

| Date                               | Engagement  |
|------------------------------------|---|
| Monthly                            | South Wagga Public School, Kildare Catholic College, Erin Earth, Multicultural Centre, Wagga Wagga City Council |
| August 18                          | Councillor Briefing   |
| August 18, September 2             | Wagga Base Hospital Executive   |
| August 19                          | Councillor and Executive traffic meeting and tour   |
| August 21                          | Try a Trade Day   |
| August 25, September 8, October 13 | Local Rescue Committee  |
| September 4                        | Junee and Wagga Fire and Rescue Units   |
| September 10                       | South Wagga School P&C  |
| September 12-13                    | Wagga Wagga Show – 175 visitors   |
| September 18                       | Wagga Rotary Club   |
| October 13-24                      | School briefings – bus changes  |
| October 17                         | Vinnies Van launch  |
| October 24                         | Clontarf Partners morning   |
| November 3                         | Councillor Briefing   |



# Upcoming Engagement – Wagga Wagga

| Date                      | Engagement  |
|---------------------------|---|
| November 13 - December 20 | Community Information sessions  |
| Monthly                   | South Wagga Public School<br>Kildare Catholic College<br>Erin Earth<br>Multicultural Centre<br>Wagga Wagga City Council |

## Successful Community Grants

- ▶ Erin Earth
- ▶ Wagga City Rugby Male Choir
- ▶ Wagga Wagga Basketball Association



# Inland Rail Skills Academy

2019 – September 2025    Wagga Wagga City LGA



We invest in Inland Rail alignment communities by partnering with experts to grow a local supply of businesses and future workers equipped for the 21<sup>st</sup> century.

STEM  
PARTNERSHIPS

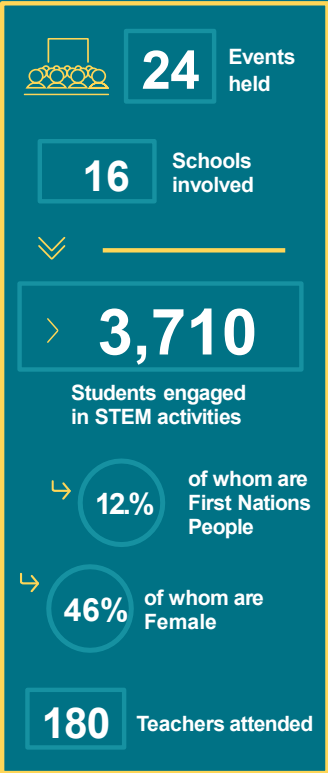
UPSKILLING LOCAL  
BUSINESSES

SKILLS TRAINING

COMMUNITY GRANTS

PROJECT  
WORKFORCE

PROJECT  
PROCUREMENT





# Planning and Environment

Rachael Labruyere - Environment Manager A2P

**INLAND  
RAIL** 





# Air Quality Monitoring Program

Air Quality monitoring locations determined based on:

- ▶ Idling locations (sidings and loops)
- ▶ Distance to receivers (within 150m)
- ▶ Access to Power

Rural and Urban monitoring locations identified. All locations are within the rail corridor on ARTC land. Weather stations to be installed at monitoring locations.

- ▶ Yerong Creek (Rural)
- ▶ The Rock (Rural)
- ▶ Junee (Urban)
- ▶ Wagga (Urban)

Ambient Air Quality monitoring parameters include:

- ▶ NO2 (1hour)
- ▶ NO2 (Annual)
- ▶ PM2.5 (24-Hour)







# Community Update

Kate Hardy – Stakeholder Engagement Lead A2I

**INLAND  
RAIL**



# First Nations Partnerships

- ▶ Expression of Interest (EOI) for First Nations Artists for the A2I project is now live
- ▶ Clontarf and Stars Awards ceremonies Term 4
- ▶ Clontarf Training Morning, John Holland Group, Martinus and Inland Rail attended





# Community Benefits

Inland Rail is a national project with local benefits, generating jobs and economic opportunities for our regions and communities right across Australia.



Albury to Illabo/  
Stockinbingal to  
Parkes

July 2023 to September 2025



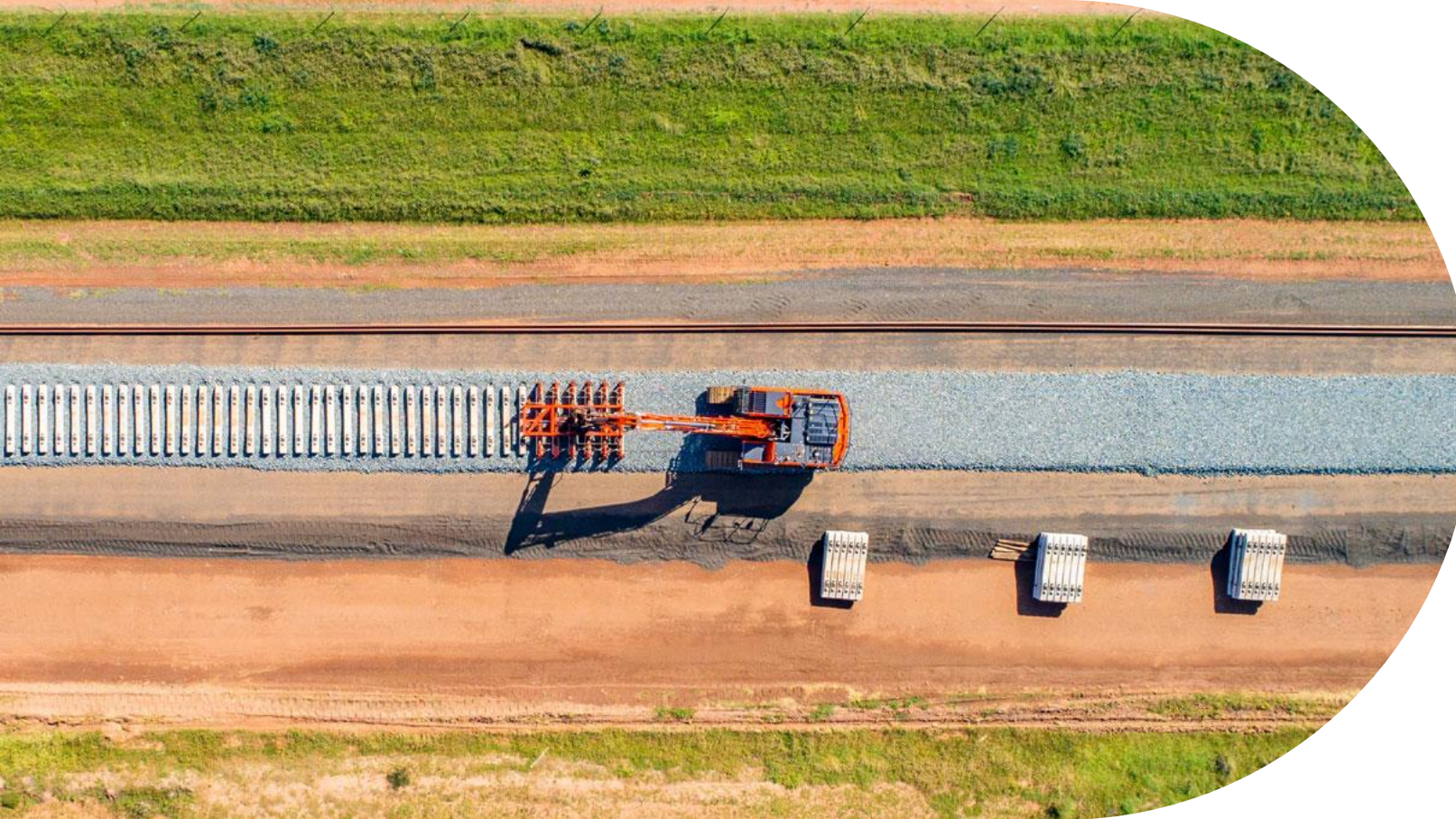


# General Business

Garry West – Chair CCC

**INLAND  
RAIL** 





# Conclusion and confirmation of actions

Garry West – Chair CCC

**INLAND  
RAIL** 







# Thank you

INLAND  
RAIL 