



This document is uncontrolled
when printed.



THE ROCK YARD - CONSTRUCTION NOISE AND VIBRATION IMPACT STATEMENT ADDENDUM

A2I | Albury to Illabo

CONTRACT NUMBER: 0052

PROJECT DOCUMENT NUMBER:

6-0052-210-EEC-G4-AS-0001_ADD

Document Control

DOCUMENT TITLE:	The Rock Yard - Construction Noise and Vibration Impact Statement Addendum		
DOCUMENT OWNER:	Chris Standing – Environment, Approvals and Sustainability Manager		
PREPARED BY:	Constance Georgiou	TITLE:	Environmental Approvals Advisor
SIGNATURE:	<i>C. Georgiou</i>	DATE:	24/11/2025
REVIEWED BY:	Alison Kriegel	TITLE:	Approvals Lead
SIGNATURE:	<i>Alison Kriegel</i>	DATE:	24/11/2025

Approved by

NAME	TITLE	SIGNATURE	DATE
Chris Standing	Environment, Approvals and Sustainability Manager	<i>CS</i>	24/11/2025

Revision History

REVISION	REVISION DATE	AMENDMENT	DATE TO CLIENT
A	4/11/2025	For review	4/11/2025
B	18/11/2025	For review	18/11/2025
0	24/11/2025	For use	24/11/2025

Disclaimer: This document has been prepared by Martinus. Use of this document shall be subject to the terms of the relevant contract with Martinus. The electronic file of this current revision is the controlled copy. This file is stored on Martinus' server located at Head Office, Unit 1, 23-27 Waratah St, Kirrawee, NSW.

This document is the property of and contains proprietary information owned by Martinus. No permission is granted to publish, reproduce, transmit or disclose to another party, any information contained in this document, in whole or in part, without prior written permission from the issuing authority.

For the purpose of this document, Martinus refers to the Martinus Group of companies.

This document is uncontrolled when printed.

TABLE OF CONTENTS

LIST OF TABLES	2
LIST OF FIGURES.....	2
GLOSSARY	3
1 INTRODUCTION	4
1.1 Purpose of this Addendum	4
2 NOISE ASSESSMENT	5
2.1 Site establishment (W.001)	5
2.1.1 Scope	5
2.1.2 Assessment	5
2.1.3 Results	5
2.2 Site operation (W.002).....	6
2.2.1 Scope	6
2.2.2 Assessment	7
2.2.3 Results.....	7
3 VIBRATION ASSESSMENT	8
3.1 Site establishment (W.001)	8
3.2 Site operation (W.002).....	8
4 CONCLUSION	9
4.1 Mitigation and management measures.....	9
4.2 Additional mitigation measures.....	9
APPENDICES	12
APPENDIX A	13
SLR Predict (W.001)	13
APPENDIX B	14
SLR Predict (W.002)	14

LIST OF TABLES

Table 1: Definitions	3
Table 2: Exceedance comparisons for W.001	6
Table 3: Exceedance comparisons for W.002	7

LIST OF FIGURES

Figure 1: Revised work area for W.001 and W.002 (The Rock Yard CNVIS Addendum)	4
Figure 2: Additional mitigation measures matrix – Noise	10
Figure 3: Additional mitigation measures matrix – Noise & Vibration.....	11

GLOSSARY

Specific terms and acronyms used throughout this plan are listed and described in Table 1 below.

TABLE 1: DEFINITIONS

TERM	DEFINITION
A2I	Albury to Illabo Project approved under Section 5.19 of the EP&A Act on 8 October 2024 and modified 13 August 2025.
Addendum	Addendum to the endorsed Construction Noise and Vibration Impact Statement
CA	Consistency Assessment
CoA	Conditions of Approval for SSI-10055
CNVIS	Construction Noise and Vibration Impact Statement
km	Kilometres
m	Metres
NDD	Non-destructive digging
NML	Noise Management Levels
OOH	Out-of-hours
Project	Albury to Illabo Project approved under Section 5.19 of the EP&A Act on 8 October 2024
RBL	Rating Background Level
SLR Predict	SLR Predict, the A2I noise and vibration management tool
SSI	State Significant Infrastructure
The Rock Yard	The Rock Yard Clearances enhancement site
T	Tonnes
W.001	Work Scenario 1 – Site establishment
W.002	Work Scenario 2 – Site operation

1 INTRODUCTION

1.1 Purpose of this Addendum

This Construction Noise and Vibration Impact Statement Addendum (Addendum) has been prepared to identify and assess the additional work area required to support and enable the wider scope of activities associated with The Rock Yard clearances enhancement site (The Rock Yard), as shown in Figure 2 below.

This Addendum will form part of the endorsed Construction Noise and Vibration Impact Statement (CNVIS) (Doc No: 6-0052-210-EEC-G4-AS-0001) for The Rock Yard. This Addendum should be reviewed in conjunction with the CNVIS for The Rock Yard, including adopted Rating Background Levels (RBL), Noise Management Levels (NML) and assessment criteria in accordance with the Conditions of Approval (CoA) (SSI-10055).



FIGURE 1: REVISED WORK AREA FOR W.001 AND W.002 (THE ROCK YARD CNVIS ADDENDUM)

2 NOISE ASSESSMENT

2.1 Site establishment (W.001)

2.1.1 Scope

The additional work area required for The Rock Yard forms part of the wider scope associated at The Rock Yard clearances enhancement site and will enable site establishment works. This CNVIS addendum has assessed the revised work area, which consists of the work area identified in the endorsed CNVIS and additional work area identified in The Rock Yard Consistency Assessment (CA) (Doc No: 6-0052-210-EAP-00-AS-0003).

The revised work area will be assessed using SLR Predict, the A2I noise and vibration management tool, with the following noted (as per the endorsed CNVIS):

Activity

- Site compound delivery and set up
- Access road and laydown construction

Plant and equipment

- Articulated dump truck
- Crane (mobile)
- Elevated work platform
- Excavator – slasher
- Front end loader
- Generator
- Hand tools (electric)
- Light vehicles
- Roller (static)
- Truck – medium rigid
- Truck & dogs
- Truck – vacuum (NDD)
- Welding equipment

Construction hours

- Standard approved construction hours:
 - 7am to 6pm Monday to Friday, inclusive
 - 7am to 6pm Saturday
- Daytime out-of-hours (OOH)
 - 8am to 6pm Sunday and Public Holidays

The same activities, plant and equipment and construction hours are relevant for this CNVIS Addendum.

2.1.2 Assessment

As noted above, the revised work area has been assessed utilising SLR Predict. The full plant and equipment list (as per the endorsed CNVIS) has been considered as a worst-case scenario within a 15-minute assessment period. The operating time (utilisation %) of each plant and equipment has remained the same as per the endorsed CNVIS.

2.1.3 Results

The SLR Predict results are presented in Appendix A, for daytime out of hours, as the most affected period.

Table 2 provides a summary of the exceedances identified through various assessments. It compares the following:

- W.001 exceedances identified in The Rock Yard CNVIS
- W.001B exceedances identified in the SLR Predict results for the revised work areas shown in Figure 1.

TABLE 2: EXCEEDANCE COMPARISONS FOR W.001

ASSESSMENT RESULTS (DAY OOH)	NUMBER OF RESIDENTIAL RECEIVERS WITH NML EXCEEDANCE	
	CNVIS – W.001	SLR Predict – W.001 (revised work area)
Total Lw (dBA)	115	116
Noticeable (1-5 dB)	58	87
Clearly Audible (6-15 dB)	55	115
Moderately Intrusive (16-25 dB)	13	26
Highly Intrusive (>25 dB)	0	7

Table 2 shows an overall increase in the intensity of impacts resulting from the current proposed scenario (last column) due to the revised work area for the scenario. There is an increased number of receivers experiencing higher noise levels including moderately intrusive (16-25 dB) and highly intrusive (>25 dB) noise levels. This is likely due to the increased size of the work area.

Three receivers will potentially experience highly noise affected impacts (>75 dBA) and will be managed accordingly as noted in Section 4 below.

2.2 Site operation (W.002)

2.2.1 Scope

The additional work area required for The Rock Yard forms part of the wider scope associated at The Rock Yard clearances enhancement site and will enable site operational works. This CNVIS addendum has assessed the revised work area, which consists of the work area identified in the endorsed CNVIS and additional work area identified in The Rock Yard Consistency Assessment (CA) (Doc No: 6-0052-210-EAP-00-AS-0003).

The revised work area will be assessed using SLR Predict, the A2I noise and vibration management tool, with the following noted (as per the endorsed CNVIS):

Activity

- Operation of the site compound
- Delivery of materials, plant and equipment
- Facilitating two-way construction traffic

Plant and equipment

- Compressor
- Crane – franna
- Front end loader
- Generator
- Hand tools (electric)
- Light vehicles
- Truck & dogs
- Truck – vacuum (NDD)
- Welding equipment

Construction hours

- Standard approved construction hours:
 - 7am to 6pm Monday to Friday, inclusive
 - 7am to 6pm Saturday

- Daytime out-of-hours (OOH)
 - 8am to 6pm Sunday and Public Holidays
- Evening OOH:
 - 6pm to 10pm Monday to Sunday (including Public Holidays)
- Night OOH:
 - 10pm to 7am Monday to Saturday
 - 10pm to 8am Sunday (including Public Holidays)

The same activities, plant and equipment and construction hours are relevant for this CNVIS Addendum.

2.2.2 Assessment

As noted above, the revised work area has been assessed utilising SLR Predict. The full plant and equipment list (as per the endorsed CNVIS) has been considered as a worst-case scenario within a 15-minute assessment period. The operating time (utilisation %) of each plant and equipment has remained the same as per the endorsed CNVIS.

2.2.3 Results

The SLR Predict results are presented in Appendix B, for night out of hours, as the most affected period.

Table 2 provides a summary of the exceedances identified through various assessments. It compares the following:

- W.002 exceedances identified in The Rock Yard CNVIS
- W.002 exceedances identified in the SLR Predict results for the revised work areas shown in Figure 1.

TABLE 3: EXCEEDANCE COMPARISONS FOR W.002

ASSESSMENT RESULTS (NIGHT OOH)	NUMBER OF RESIDENTIAL RECEIVERS WITH NML EXCEEDANCE	
	CNVIS – W.002	SLR Predict – W.002 (revised work area)
Total Lw (dBA)	113	116
Noticeable (1-5 dB)	125	86
Clearly Audible (6-15 dB)	113	198
Moderately Intrusive (16-25 dB)	34	103
Highly Intrusive (>25 dB)	5	25
Above Sleep Disturbance (>Screening level)	103	99
Above Sleep Awake (>65 dB)	13	13

Table 3 shows an overall increase in the intensity of impacts resulting from the current proposed scenario (last column), due to the revised work area for the scenario. There is an increased number of receivers experiencing higher noise levels including moderately intrusive (16-25 dB) and highly intrusive (>25 dB) noise levels. This is likely due to the increased size of the work area.

Three receivers will potentially experience highly noise affected impacts (>75 dBA) and will be managed accordingly as noted in Section 4 below.

3 VIBRATION ASSESSMENT

3.1 Site establishment (W.001)

There are no vibration intensive plant and equipment proposed as part of W.001 and therefore, no vibration impacts are expected.

3.2 Site operation (W.002)

There are no vibration intensive plant and equipment proposed as part of W.002 and therefore, no vibration impacts are expected.

4 CONCLUSION

4.1 Mitigation and management measures

As this Addendum forms part of the endorsed CNVIS for The Rock Yard, the same noise and vibration management measures apply as noted in Section 8 of the CNVIS.

4.2 Additional mitigation measures

As noted in Figure 2 and under Appendix A and Appendix B, the SLR Predict results include a section on all applicable additional mitigation measures. These additional mitigation measures will be implemented where appropriate.

Airborne Noise - Additional Mitigation Measures Matrix				
Time Period	Exceedance of NML	Perception	Duration	Communication Category/Management Measure
OOHW Daytime Period Sunday 7am - 6pm (including public holidays)	<5	Noticeable	Any	CO1
	5 - 15	Clearly audible	Any	CO1
	16 - 25	Moderately intrusive	Any	CO1, CO2
	>25	Highly intrusive	Any	CO1, CO2
OOHW Evening Period Monday - Sunday 6pm - 10pm (including public holidays)	<5	Noticeable	Any	CO1
	5 - 15	Clearly audible	Any	CO1
	16 - 25	Moderately intrusive	Any	CO1, CO2
	>25	Highly intrusive	Any	CO1, CO2
			>2 consecutive rest periods	CO1, CO2, RO
OOHW Night Period Monday - Sunday 10pm - 7am (including public holidays)	<5	Noticeable	Any	CO1
	5 - 15	Clearly audible	Any	CO1
	16 - 25	Moderately intrusive	Any	CO1, CO2
			>2 consecutive sleep periods	CO1, CO2, RO, AO
	>25	Highly intrusive	Any	CO1, CO2, RO
			>2 consecutive sleep periods	CO1, CO2, RO, AO, AltA

FIGURE 2: ADDITIONAL MITIGATION MEASURES MATRIX – NOISE

Additional Mitigation Measures			
Measure		Abbreviation	
Communication (Category 1) ¹		CO1	
Communication (Category 2) ²		CO2	
Respite Offer ³		RO	
Alternative Accommodation		AltA	
Agreement with Owners		AO	
Note 1: CO1: Communication to provide information on the OOHW via methods such as letter box drop, email, newsletter, media advertisements and/ or website prior to the works commencing.			
Note 2: CO2: Communication should be personalised (e.g. door knock, meeting, telephone call). Contact with these residents should commence early to enable feedback to be considered by the proposal.			
Note 3: RO are not applicable to non-residential receivers. RO may comprise of pre-purchased movie tickets, dinner vouchers or similar. RO can also be provided by limiting high noise generating works and allowing at least a one-hour respite period between blocks of work. Where possible, the timing of this respite should be discussed with the impacted community.			
Receiver Types			
Code	Description	Code	Description
RES	Residential	OED	Other Educational
COM	Commercial	OHO	Other Hotel
IND	Industrial	OLI	Other Library
OOA	Other Outdoor Active Recreation	OME	Other Medical
OOP	Other Outdoor Passive Recreation	OPW	Other Place of Worship
OCC	Other Child Care	OPB	Other Public Building

FIGURE 3: ADDITIONAL MITIGATION MEASURES MATRIX – NOISE & VIBRATION



APPENDICES



APPENDIX A

SLR Predict (W.001)



Construction Noise and Vibration Impact Statement (CNVIS)

This report presents the outcomes of detailed noise/vibration modelling relating to specific construction activities proposed on site in accordance with the methodology outlined in the *Construction Noise and Vibration Management Plan* (CNVMP) and overarching *Construction Noise and Vibration Impact Statement* (CNVIS).

Prior to detailed noise/vibration modelling being undertaken, work activities are reviewed and considered in relation to industry best practice, consistent with the requirements of the CNVMP. Consideration is first given to eliminating the noise/vibration emissions so far as reasonably practicable. Where elimination is not practicable, efforts are been made to reduce the risk as far as practical by implementing noise and vibration management measures as outlined in the overarching CNVIS and CNVMP.

Examples of these measures include selecting the quietest equipment and processes to complete the works, considering staging and periods of respite to minimise prolonged periods of noise and vibration exposure, and maximising distances between construction activities and sensitive receivers.

Consultation with Affected Receivers

In accordance with CoA E78, the CNVIS must include specific mitigation measures identified through consultation with affected sensitive land user(s) and the mitigation measures must be implemented for the duration of the Work. Details of this consultation are provided in the overarching CNVIS for each enhancement site.

Assessment Details

Author Name	
Author Email	noiseassessments@martinus.com.au
Author Organisation	Martinus Rail
Project Name	A2I - Albury to Illabo
Assessment Name	The Rock Addendum - W.001
Stage	A2I Construction
Permit Number	N/A
Start Date	2025-12-01
End Date	2025-12-02
Assessment Period	Day - out of hours

Equipment Details

Plant/Equipment	Equipment Sound Power Level (Unadjusted), dBA	Number of Units	Temporary Noise Barrier
1: Work Area (Height: Ground)	Total: 116		
Articulated Dump Truck 25% operation	109	1	No
Crane (mobile) 30% operation	104	1	No
Elevated Work Platform 25% operation	97	1	No
Excavator - Tracked (10T) 50% operation	100	1	No
Front End Loader 50% operation	113	1	No
Generator - attenuated 100% operation	92	1	No
Hand tools (electric) 75% operation	102	3	No
Light Vehicle (accelerating) 25% operation	95	2	No
Roller - static 100% operation	107	1	No

Note 1: Equipment classed as 'annoying' in the *Interim Construction Noise Guideline (DECC, 2009)* include a 5 dB correction.

Note 2: Equipment sound power levels consider the mitigation measures outlined in the overarching CNVIS to provide mitigated results.

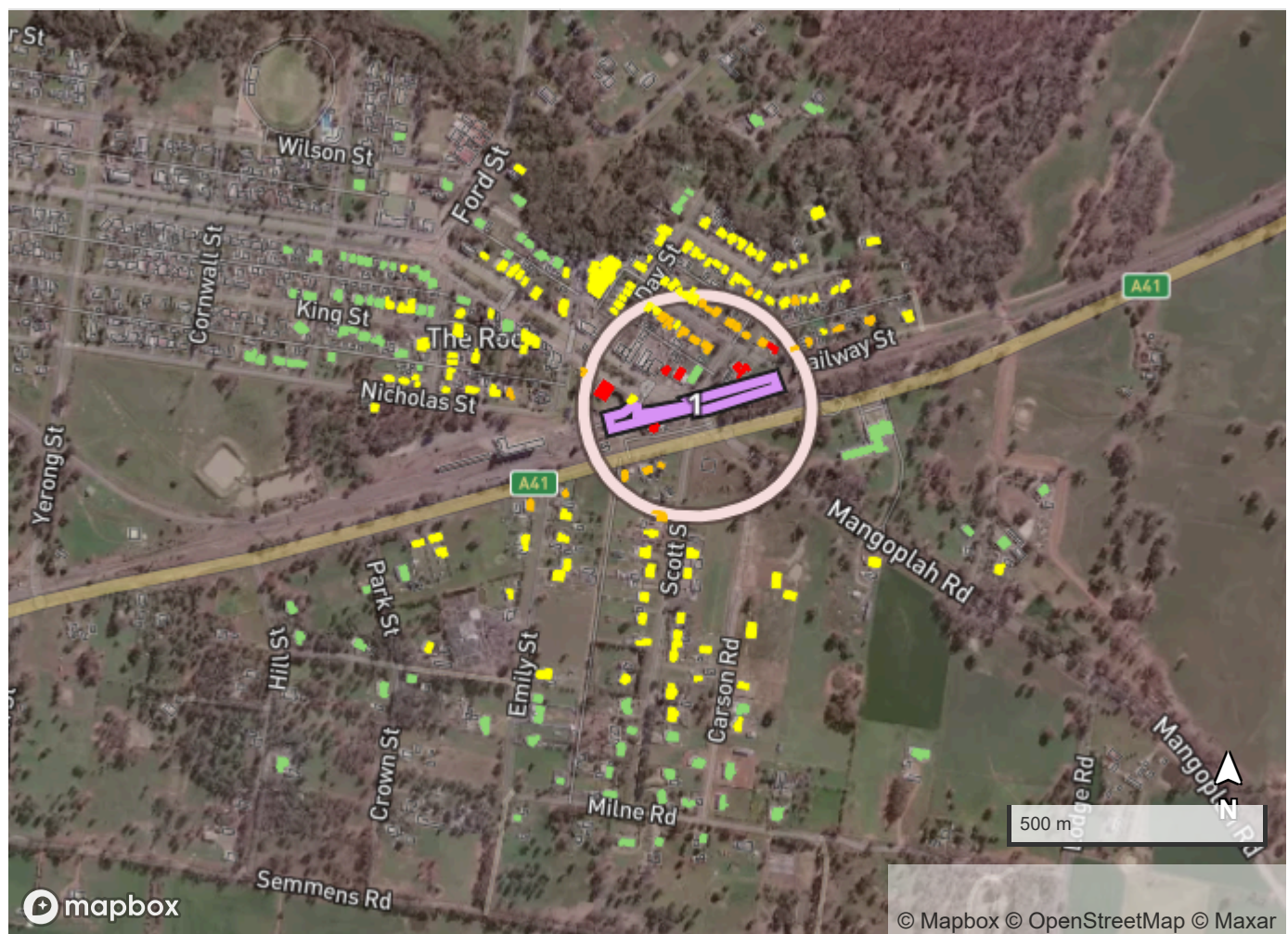
Equipment Details

Plant/Equipment	Equipment Sound Power Level (Unadjusted), dBA	Number of Units	Temporary Noise Barrier
Truck - medium rigid (20T) 25% operation	103	1	No
Truck - road truck/ truck & dog (30T) 25% operation	108	2	No
Truck - vacuum (NDD or non-destructive digger) 100% operation	109	1	No
Welding Equipment 100% operation	110	1	No

Note 1: Equipment classed as 'annoying' in the *Interim Construction Noise Guideline (DECC, 2009)* include a 5 dB correction.

Note 2: Equipment sound power levels consider the mitigation measures outlined in the overarching CNVIS to provide mitigated results.

Assessment Results





Residential

Non-Residential

Assessment Results

	Highly Intrusive	7 properties	0 property
	Moderately Intrusive	26 properties	0 property
	Clearly Audible	113 properties	2 properties
	Noticeable	84 properties	3 properties

Legend

	Project Boundary
	Work Areas
	Barriers

Results by Receiver

Address	Land Use	Noise Catchment Area	Construction Noise Management Level, dBA	Predicted Noise Level, dBA	Predicted Noise Level Above Noise Management Level, dB	Noise Category
22 RAILWAY ST, THE ROCK NSW 2655	RES	NCA08	44	81	37	Highly Intrusive
25 DAVIDSON ST, THE ROCK NSW 2655	RES	NCA08	44	80	36	Highly Intrusive
23 DAVIDSON ST, THE ROCK NSW 2655	RES	NCA08	44	76	32	Highly Intrusive
131 URANA ST, THE ROCK NSW 2655	RES	NCA08	44	74	30	Highly Intrusive
158 URANA ST, THE ROCK NSW 2655	RES	NCA08	44	71	27	Highly Intrusive
30 DAVIDSON ST, THE ROCK NSW 2655	RES	NCA08	44	71	27	Highly Intrusive
148 URANA ST, THE ROCK NSW 2655	RES	NCA08	44	70	26	Highly Intrusive

Results by Receiver

Address	Land Use	Noise Catchment Area	Construction Noise Management Level, dBA	Predicted Noise Level, dBA	Predicted Noise Level Above Noise Management Level, dB	Noise Category
32 RAILWAY ST, THE ROCK NSW 2655	RES	NCA08	44	69	25	Moderately Intrusive
28 DAVIDSON ST, THE ROCK NSW 2655	RES	NCA08	44	69	25	Moderately Intrusive
23 RAILWAY ST, THE ROCK NSW 2655	RES	NCA08	44	68	24	Moderately Intrusive
25 RAILWAY ST, THE ROCK NSW 2655	RES	NCA08	44	67	23	Moderately Intrusive
15 DAVIDSON ST, THE ROCK NSW 2655	RES	NCA08	44	67	23	Moderately Intrusive
21 RAILWAY ST, THE ROCK NSW 2655	RES	NCA08	44	66	22	Moderately Intrusive
24 DAVIDSON ST, THE ROCK NSW 2655	RES	NCA08	44	66	22	Moderately Intrusive
127 URANA ST, THE ROCK NSW 2655	RES	NCA08	44	65	21	Moderately Intrusive
34 RAILWAY ST, THE ROCK NSW 2655	RES	NCA08	44	65	21	Moderately Intrusive
13 DAVIDSON ST, THE ROCK NSW 2655	RES	NCA08	44	65	21	Moderately Intrusive
22 DAVIDSON ST, THE ROCK NSW 2655	RES	NCA08	44	64	20	Moderately Intrusive
11 DAVIDSON ST, THE ROCK NSW 2655	RES	NCA08	44	63	19	Moderately Intrusive
20 DAVIDSON ST, THE ROCK NSW 2655	RES	NCA08	44	63	19	Moderately Intrusive
17 RAILWAY ST, THE ROCK NSW 2655	RES	NCA08	44	62	18	Moderately Intrusive

Results by Receiver

Address	Land Use	Noise Catchment Area	Construction Noise Management Level, dBA	Predicted Noise Level, dBA	Predicted Noise Level Above Noise Management Level, dB	Noise Category
16 DAVIDSON ST, THE ROCK NSW 2655	RES	NCA08	44	62	18	Moderately Intrusive
56 SCOTT ST, THE ROCK NSW 2655	RES	NCA08	44	61	17	Moderately Intrusive
60 EMILY ST, THE ROCK NSW 2655	RES	NCA08	44	61	17	Moderately Intrusive
38 RAILWAY ST, THE ROCK NSW 2655	RES	NCA08	44	61	17	Moderately Intrusive
7 DAVIDSON ST, THE ROCK NSW 2655	RES	NCA08	44	61	17	Moderately Intrusive
14 DAVIDSON ST, THE ROCK NSW 2655	RES	NCA08	44	61	17	Moderately Intrusive
12 DAVIDSON ST, THE ROCK NSW 2655	RES	NCA08	44	61	17	Moderately Intrusive
27 NORMAN ST, THE ROCK NSW 2655	RES	NCA08	44	61	17	Moderately Intrusive
90 NICHOLAS ST, THE ROCK NSW 2655	RES	NCA08	44	60	16	Moderately Intrusive
40-42 RAILWAY ST, THE ROCK NSW 2655	RES	NCA08	44	60	16	Moderately Intrusive
5 DAVIDSON ST, THE ROCK NSW 2655	RES	NCA08	44	60	16	Moderately Intrusive
19 NORMAN ST, THE ROCK NSW 2655	RES	NCA08	44	60	16	Moderately Intrusive
82 NICHOLAS ST, THE ROCK NSW 2655	RES	NCA08	44	59	15	Clearly Audible
36 RAILWAY ST, THE ROCK NSW 2655	RES	NCA08	44	59	15	Clearly Audible

Results by Receiver

Address	Land Use	Noise Catchment Area	Construction Noise Management Level, dBA	Predicted Noise Level, dBA	Predicted Noise Level Above Noise Management Level, dB	Noise Category
9 DAVIDSON ST, THE ROCK NSW 2655	RES	NCA08	44	59	15	Clearly Audible
2 DAY ST, THE ROCK NSW 2655	RES	NCA08	44	59	15	Clearly Audible
25 NORMAN ST, THE ROCK NSW 2655	RES	NCA08	44	59	15	Clearly Audible
10 DAVIDSON ST, THE ROCK NSW 2655	RES	NCA08	44	59	15	Clearly Audible
15 NORMAN ST, THE ROCK NSW 2655	RES	NCA08	44	59	15	Clearly Audible
48-50 SCOTT ST, THE ROCK NSW 2655	RES	NCA08	44	58	14	Clearly Audible
54 SCOTT ST, THE ROCK NSW 2655	RES	NCA08	44	58	14	Clearly Audible
51-53 EMILY ST, THE ROCK NSW 2655	RES	NCA08	44	58	14	Clearly Audible
135 URANA ST, THE ROCK NSW 2655	COM	NCA08	70	84	14	Clearly Audible
86 NICHOLAS ST, THE ROCK NSW 2655	RES	NCA08	44	58	14	Clearly Audible
117 URANA ST, THE ROCK NSW 2655	RES	NCA08	44	58	14	Clearly Audible
23 NORMAN ST, THE ROCK NSW 2655	RES	NCA08	44	58	14	Clearly Audible
27A NORMAN ST, THE ROCK NSW 2655	RES	NCA08	44	58	14	Clearly Audible
21 NORMAN ST, THE ROCK NSW 2655	RES	NCA08	44	58	14	Clearly Audible

Results by Receiver

Address	Land Use	Noise Catchment Area	Construction Noise Management Level, dBA	Predicted Noise Level, dBA	Predicted Noise Level Above Noise Management Level, dB	Noise Category
8 DAVIDSON ST, THE ROCK NSW 2655	RES	NCA08	44	58	14	Clearly Audible
6 DAVIDSON ST, THE ROCK NSW 2655	RES	NCA08	44	58	14	Clearly Audible
9 EMILY STREET, THE ROCK NSW 2655	RES	NCA08	44	58	14	Clearly Audible
11 NORMAN ST, THE ROCK NSW 2655	RES	NCA08	44	58	14	Clearly Audible
49 SCOTT ST, THE ROCK NSW 2655	RES	NCA08	44	57	13	Clearly Audible
54 EMILY ST, THE ROCK NSW 2655	RES	NCA08	44	57	13	Clearly Audible
3 DAVIDSON ST, THE ROCK NSW 2655	RES	NCA08	44	57	13	Clearly Audible
118 URANA ST, THE ROCK NSW 2655	RES	NCA08	44	57	13	Clearly Audible
29 NORMAN ST, THE ROCK NSW 2655	RES	NCA08	44	57	13	Clearly Audible
18 NORMAN ST, THE ROCK NSW 2655	RES	NCA08	44	57	13	Clearly Audible
8 NORMAN ST, THE ROCK NSW 2655	RES	NCA08	44	57	13	Clearly Audible
LOT 1 EMILY STREET, THE ROCK NSW 2655	RES	NCA08	44	56	12	Clearly Audible
5A JOHN ST, THE ROCK NSW 2655	RES	NCA08	44	56	12	Clearly Audible
44-46 RAILWAY ST, THE ROCK NSW 2655	RES	NCA08	44	56	12	Clearly Audible
1 DAVIDSON ST, THE ROCK NSW 2655	RES	NCA08	44	56	12	Clearly Audible

Results by Receiver

Address	Land Use	Noise Catchment Area	Construction Noise Management Level, dBA	Predicted Noise Level, dBA	Predicted Noise Level Above Noise Management Level, dB	Noise Category
4 DAY ST, THE ROCK NSW 2655	RES	NCA08	44	56	12	Clearly Audible
31 NORMAN ST, THE ROCK NSW 2655	RES	NCA08	44	56	12	Clearly Audible
33-35 NORMAN ST, THE ROCK NSW 2655	RES	NCA08	44	56	12	Clearly Audible
4 DAVIDSON ST, THE ROCK NSW 2655	RES	NCA08	44	56	12	Clearly Audible
2 DAVIDSON ST, THE ROCK NSW 2655	RES	NCA08	44	56	12	Clearly Audible
108 URANA ST, THE ROCK NSW 2655	RES	NCA08	44	56	12	Clearly Audible
12 NORMAN ST, THE ROCK NSW 2655	RES	NCA08	44	56	12	Clearly Audible
47 SCOTT ST, THE ROCK NSW 2655	RES	NCA08	44	55	11	Clearly Audible
44 SCOTT ST, THE ROCK NSW 2655	RES	NCA08	44	55	11	Clearly Audible
1 JOHN ST, THE ROCK NSW 2655	RES	NCA08	44	55	11	Clearly Audible
121 URANA ST, THE ROCK NSW 2655	RES	NCA08	44	55	11	Clearly Audible
117 URANA ST, THE ROCK NSW 2655	RES	NCA08	44	55	11	Clearly Audible
13 JOHN ST, THE ROCK NSW 2655	RES	NCA08	44	55	11	Clearly Audible
KNIGHTLEY COTTAGES 15 JOHN ST, THE ROCK NSW 2655	RES	NCA08	44	55	11	Clearly Audible
17 NORMAN ST, THE ROCK NSW 2655	RES	NCA08	44	55	11	Clearly Audible

Results by Receiver

Address	Land Use	Noise Catchment Area	Construction Noise Management Level, dBA	Predicted Noise Level, dBA	Predicted Noise Level Above Noise Management Level, dB	Noise Category
110 URANA ST, THE ROCK NSW 2655	RES	NCA08	44	55	11	Clearly Audible
13 BURKES ST, THE ROCK NSW 2655	RES	NCA08	44	55	11	Clearly Audible
106 URANA ST, THE ROCK NSW 2655	RES	NCA08	44	55	11	Clearly Audible
104 URANA ST, THE ROCK NSW 2655	RES	NCA08	44	55	11	Clearly Audible
33 SCOTT ST, THE ROCK NSW 2655	RES	NCA08	44	54	10	Clearly Audible
89 NICHOLAS ST, THE ROCK NSW 2655	RES	NCA08	44	54	10	Clearly Audible
5 JOHN ST, THE ROCK NSW 2655	RES	NCA08	44	54	10	Clearly Audible
7-9 JOHN ST, THE ROCK NSW 2655	RES	NCA08	44	54	10	Clearly Audible
112-114 URANA ST, THE ROCK NSW 2655	RES	NCA08	44	54	10	Clearly Audible
10 DAY ST, THE ROCK NSW 2655	RES	NCA08	44	54	10	Clearly Audible
16 DAY STREET, THE ROCK NSW 2655	RES	NCA08	44	54	10	Clearly Audible
20 NORMAN ST, THE ROCK NSW 2655	RES	NCA08	44	54	10	Clearly Audible
9 NORMAN ST, THE ROCK NSW 2655	RES	NCA08	44	54	10	Clearly Audible
22 NORMAN ST, THE ROCK NSW 2655	RES	NCA08	44	54	10	Clearly Audible
LOT 13 22 CARSON ROAD, THE ROCK NSW 2655	RES	NCA08	44	54	10	Clearly Audible

Results by Receiver

Address	Land Use	Noise Catchment Area	Construction Noise Management Level, dBA	Predicted Noise Level, dBA	Predicted Noise Level Above Noise Management Level, dB	Noise Category
32 SCOTT ST, THE ROCK NSW 2655	RES	NCA08	44	53	9	Clearly Audible
36 MANGOPLAH RD, THE ROCK NSW 2655	RES	NCA08	44	53	9	Clearly Audible
13 RAILWAY ST, THE ROCK NSW 2655	RES	NCA08	44	53	9	Clearly Audible
13 RAILWAY ST, THE ROCK NSW 2655	RES	NCA08	44	53	9	Clearly Audible
6 DAY ST, THE ROCK NSW 2655	RES	NCA08	44	53	9	Clearly Audible
5 NORMAN ST, THE ROCK NSW 2655	RES	NCA08	44	53	9	Clearly Audible
14 NORMAN ST, THE ROCK NSW 2655	RES	NCA08	44	53	9	Clearly Audible
10 NORMAN ST, THE ROCK NSW 2655	RES	NCA08	44	53	9	Clearly Audible
LOT 13 22 CARSON ROAD, THE ROCK NSW 2655	RES	NCA08	44	53	9	Clearly Audible
25 SCOTT ST, THE ROCK NSW 2655	RES	NCA08	44	52	8	Clearly Audible
31 SCOTT ST, THE ROCK NSW 2655	RES	NCA08	44	52	8	Clearly Audible
39 SCOTT ST, THE ROCK NSW 2655	RES	NCA08	44	52	8	Clearly Audible
40-42 SCOTT ST, THE ROCK NSW 2655	RES	NCA08	44	52	8	Clearly Audible
13A RAILWAY ST, THE ROCK NSW 2655	RES	NCA08	44	52	8	Clearly Audible
2 JOHN ST, THE ROCK NSW 2655	RES	NCA08	44	52	8	Clearly Audible

Results by Receiver

Address	Land Use	Noise Catchment Area	Construction Noise Management Level, dBA	Predicted Noise Level, dBA	Predicted Noise Level Above Noise Management Level, dB	Noise Category
3 JOHN ST, THE ROCK NSW 2655	RES	NCA08	44	52	8	Clearly Audible
8 DAY ST, THE ROCK NSW 2655	RES	NCA08	44	52	8	Clearly Audible
7 NORMAN ST, THE ROCK NSW 2655	RES	NCA08	44	52	8	Clearly Audible
100 URANA ST, THE ROCK NSW 2655	RES	NCA08	44	52	8	Clearly Audible
3 NORMAN ST, THE ROCK NSW 2655	RES	NCA08	44	52	8	Clearly Audible
1 NORMAN ST, THE ROCK NSW 2655	RES	NCA08	44	52	8	Clearly Audible
LOT 6 12 CARSON ROAD, THE ROCK NSW 2655	RES	NCA08	44	52	8	Clearly Audible
LOT 10 20 CARSON ROAD, THE ROCK NSW 2655	RES	NCA08	44	52	8	Clearly Audible
17-19 SCOTT ST, THE ROCK NSW 2655	RES	NCA08	44	51	7	Clearly Audible
21 SCOTT ST, THE ROCK NSW 2655	RES	NCA08	44	51	7	Clearly Audible
36-38 SCOTT ST, THE ROCK NSW 2655	RES	NCA08	44	51	7	Clearly Audible
LOT 103 RAILWAY STREET, THE ROCK NSW 2655	RES	NCA08	44	51	7	Clearly Audible
43-45 EMILY ST, THE ROCK NSW 2655	RES	NCA08	44	51	7	Clearly Audible
66 NICHOLAS ST, THE ROCK NSW 2655	RES	NCA08	44	51	7	Clearly Audible

Results by Receiver

Address	Land Use	Noise Catchment Area	Construction Noise Management Level, dBA	Predicted Noise Level, dBA	Predicted Noise Level Above Noise Management Level, dB	Noise Category
66 NICHOLAS ST, THE ROCK NSW 2655	RES	NCA08	44	51	7	Clearly Audible
109A URANA ST, THE ROCK NSW 2655	RES	NCA08	44	51	7	Clearly Audible
90 KING ST, THE ROCK NSW 2655	RES	NCA08	44	51	7	Clearly Audible
92 KING ST, THE ROCK NSW 2655	RES	NCA08	44	51	7	Clearly Audible
18 DAY ST, THE ROCK NSW 2655	RES	NCA08	44	51	7	Clearly Audible
6 NORMAN ST, THE ROCK NSW 2655	RES	NCA08	44	51	7	Clearly Audible
24-32 NORMAN ST, THE ROCK NSW 2655	RES	NCA08	44	51	7	Clearly Audible
24 SCOTT ST, THE ROCK NSW 2655	RES	NCA08	44	50	6	Clearly Audible
25 SCOTT ST, THE ROCK NSW 2655	RES	NCA08	44	50	6	Clearly Audible
23 EMILY ST, THE ROCK NSW 2655	RES	NCA08	44	50	6	Clearly Audible
29 SCOTT ST, THE ROCK NSW 2655	RES	NCA08	44	50	6	Clearly Audible
LOT 101 PARK STREET, THE ROCK NSW 2655	RES	NCA08	44	50	6	Clearly Audible
27 EMILY ST, THE ROCK NSW 2655	RES	NCA08	44	50	6	Clearly Audible
LOT 1 STREVENS STREET, THE ROCK NSW 2655	RES	NCA08	44	50	6	Clearly Audible
KNIGHTLEIGH COTTAGES 3/2 JOHN ST, THE ROCK NSW 2655	RES	NCA08	44	50	6	Clearly Audible
99 KING ST, THE ROCK NSW 2655	OCC	NCA08	45	51	6	Clearly Audible

Results by Receiver

Address	Land Use	Noise Catchment Area	Construction Noise Management Level, dBA	Predicted Noise Level, dBA	Predicted Noise Level Above Noise Management Level, dB	Noise Category
88 KING ST, THE ROCK NSW 2655	RES	NCA08	44	50	6	Clearly Audible
95 URANA ST, THE ROCK NSW 2655	RES	NCA08	44	50	6	Clearly Audible
22 DAY ST, THE ROCK NSW 2655	RES	NCA08	44	50	6	Clearly Audible
34 NORMAN ST, THE ROCK NSW 2655	RES	NCA08	44	50	6	Clearly Audible
24 DAY ST, THE ROCK NSW 2655	RES	NCA08	44	50	6	Clearly Audible
26 DAY ST, THE ROCK NSW 2655	RES	NCA08	44	50	6	Clearly Audible
2 NORMAN ST, THE ROCK NSW 2655	RES	NCA08	44	50	6	Clearly Audible
1 FORD ST, THE ROCK NSW 2655	RES	NCA08	44	50	6	Clearly Audible
10 Carson Rd, The Rock NSW 2655	RES	NCA08	44	50	6	Clearly Audible
4 PINE ST, THE ROCK NSW 2655	RES	NCA08	44	49	5	Noticeable
LOT 11 STREVS STREET, THE ROCK NSW 2655	RES	NCA08	44	49	5	Noticeable
STATE EMERGENCY SERVICE 150-152 URANA ST, THE ROCK NSW 2655	COM	NCA08	70	75	5	Noticeable
KNIGHTLEIGH COTTAGES 2/2 JOHN ST, THE ROCK NSW 2655	RES	NCA08	44	49	5	Noticeable
60 NICHOLAS ST, THE ROCK NSW 2655	RES	NCA08	44	49	5	Noticeable
91 KING ST, THE ROCK NSW 2655	RES	NCA08	44	49	5	Noticeable

Results by Receiver

Address	Land Use	Noise Catchment Area	Construction Noise Management Level, dBA	Predicted Noise Level, dBA	Predicted Noise Level Above Noise Management Level, dB	Noise Category
94 KING ST, THE ROCK NSW 2655	RES	NCA08	44	49	5	Noticeable
101 URANA ST, THE ROCK NSW 2655	RES	NCA08	44	49	5	Noticeable
11 BURKES ST, THE ROCK NSW 2655	RES	NCA08	44	49	5	Noticeable
9 BURKES ST, THE ROCK NSW 2655	RES	NCA08	44	49	5	Noticeable
LOT A FORD STREET, THE ROCK NSW 2655	RES	NCA08	44	49	5	Noticeable
34 DAY ST, THE ROCK NSW 2655	RES	NCA08	44	49	5	Noticeable
LOT 42 RAILWAY STREET, THE ROCK NSW 2655	RES	NCA08	44	49	5	Noticeable
10 CROWN ST, THE ROCK NSW 2655	RES	NCA08	44	48	4	Noticeable
58 NICHOLAS ST, THE ROCK NSW 2655	RES	NCA08	44	48	4	Noticeable
54 NICHOLAS ST, THE ROCK NSW 2655	RES	NCA08	44	48	4	Noticeable
LOT 4 KING STREET, THE ROCK NSW 2655	OCC	NCA08	45	49	4	Noticeable
83 KING ST, THE ROCK NSW 2655	RES	NCA08	44	48	4	Noticeable
96 KING ST, THE ROCK NSW 2655	RES	NCA08	44	48	4	Noticeable
86 KING ST, THE ROCK NSW 2655	RES	NCA08	44	48	4	Noticeable
84 KING ST, THE ROCK NSW 2655	RES	NCA08	44	48	4	Noticeable
99 URANA ST, THE ROCK NSW 2655	RES	NCA08	44	48	4	Noticeable

Results by Receiver

Address	Land Use	Noise Catchment Area	Construction Noise Management Level, dBA	Predicted Noise Level, dBA	Predicted Noise Level Above Noise Management Level, dB	Noise Category
91 URANA ST, THE ROCK NSW 2655	RES	NCA08	44	48	4	Noticeable
7 BURKES ST, THE ROCK NSW 2655	RES	NCA08	44	48	4	Noticeable
5 BURKES ST, THE ROCK NSW 2655	RES	NCA08	44	48	4	Noticeable
30 DAY ST, THE ROCK NSW 2655	RES	NCA08	44	48	4	Noticeable
4 BURKES ST, THE ROCK NSW 2655	RES	NCA08	44	48	4	Noticeable
38 DAY ST, THE ROCK NSW 2655	RES	NCA08	44	48	4	Noticeable
21 ISLAND BEND LANE, THE ROCK NSW 2655	RES	NCA08	44	48	4	Noticeable
LOT 5 10 CARSON ROAD, THE ROCK NSW 2655	RES	NCA08	44	48	4	Noticeable
LOT 28 EMILY STREET, THE ROCK NSW 2655	RES	NCA08	44	47	3	Noticeable
14-16 SCOTT ST, THE ROCK NSW 2655	RES	NCA08	44	47	3	Noticeable
18-20 SCOTT ST, THE ROCK NSW 2655	RES	NCA08	44	47	3	Noticeable
13 HILL ST, THE ROCK NSW 2655	RES	NCA08	44	47	3	Noticeable
LOT 88 PARK STREET, THE ROCK NSW 2655	RES	NCA08	44	47	3	Noticeable
2 STREVS ST, THE ROCK NSW 2655	RES	NCA08	44	47	3	Noticeable
52 NICHOLAS ST, THE ROCK NSW 2655	RES	NCA08	44	47	3	Noticeable

Results by Receiver

Address	Land Use	Noise Catchment Area	Construction Noise Management Level, dBA	Predicted Noise Level, dBA	Predicted Noise Level Above Noise Management Level, dB	Noise Category
113 URANA ST, THE ROCK NSW 2655	RES	NCA08	44	47	3	Noticeable
103 URANA ST, THE ROCK NSW 2655	RES	NCA08	44	47	3	Noticeable
82 KING ST, THE ROCK NSW 2655	RES	NCA08	44	47	3	Noticeable
99 URANA ST, THE ROCK NSW 2655	RES	NCA08	44	47	3	Noticeable
83 URANA ST, THE ROCK NSW 2655	RES	NCA08	44	47	3	Noticeable
Lot 5, Plan 5/4/758971, The Rock, NSW 2655	RES	NCA08	44	47	3	Noticeable
23 ISLAND BEND LANE, THE ROCK NSW 2655	RES	NCA08	44	47	3	Noticeable
4 Carson Rd, The Rock NSW 2655	RES	NCA08	44	47	3	Noticeable
9 CARSON ROAD, THE ROCK NSW 2655	RES	NCA08	44	47	3	Noticeable
9A MILNE RD, THE ROCK NSW 2655	RES	NCA08	44	46	2	Noticeable
4 MILNE RD, THE ROCK NSW 2655	RES	NCA08	44	46	2	Noticeable
6-8 SCOTT ST, THE ROCK NSW 2655	RES	NCA08	44	46	2	Noticeable
30 EMILY ST, THE ROCK NSW 2655	RES	NCA08	44	46	2	Noticeable
11 HILL ST, THE ROCK NSW 2655	RES	NCA08	44	46	2	Noticeable
62 NICHOLAS ST, THE ROCK NSW 2655	RES	NCA08	44	46	2	Noticeable
87 KING ST, THE ROCK NSW 2655	RES	NCA08	44	46	2	Noticeable

Results by Receiver

Address	Land Use	Noise Catchment Area	Construction Noise Management Level, dBA	Predicted Noise Level, dBA	Predicted Noise Level Above Noise Management Level, dB	Noise Category
85 KING ST, THE ROCK NSW 2655	RES	NCA08	44	46	2	Noticeable
8 MIXNER ST, THE ROCK NSW 2655	RES	NCA08	44	46	2	Noticeable
78 KING ST, THE ROCK NSW 2655	RES	NCA08	44	46	2	Noticeable
87 URANA ST, THE ROCK NSW 2655	RES	NCA08	44	46	2	Noticeable
85 URANA ST, THE ROCK NSW 2655	RES	NCA08	44	46	2	Noticeable
104 URANA ST, THE ROCK NSW 2655	RES	NCA08	44	46	2	Noticeable
LOT 1 2 CARSON ROAD, THE ROCK NSW 2655	RES	NCA08	44	46	2	Noticeable
9B MILNE RD, THE ROCK NSW 2655	RES	NCA08	44	45	1	Noticeable
15 MILNE RD, THE ROCK NSW 2655	RES	NCA08	44	45	1	Noticeable
1 MILNE RD, THE ROCK NSW 2655	RES	NCA08	44	45	1	Noticeable
20 MILNE RD, THE ROCK NSW 2655	RES	NCA08	44	45	1	Noticeable
12 MILNE RD, THE ROCK NSW 2655	RES	NCA08	44	45	1	Noticeable
1 SCOTT ST, THE ROCK NSW 2655	RES	NCA08	44	45	1	Noticeable
2 SCOTT ST, THE ROCK NSW 2655	RES	NCA08	44	45	1	Noticeable
5-7 SCOTT ST, THE ROCK NSW 2655	RES	NCA08	44	45	1	Noticeable
5 HILL ST, THE ROCK NSW 2655	RES	NCA08	44	45	1	Noticeable
26 MILNE RD, THE ROCK NSW 2655	RES	NCA08	44	45	1	Noticeable

Results by Receiver

Address	Land Use	Noise Catchment Area	Construction Noise Management Level, dBA	Predicted Noise Level, dBA	Predicted Noise Level Above Noise Management Level, dB	Noise Category
10-12 SCOTT ST, THE ROCK NSW 2655	RES	NCA08	44	45	1	Noticeable
13-15 SCOTT ST, THE ROCK NSW 2655	RES	NCA08	44	45	1	Noticeable
17 EMILY ST, THE ROCK NSW 2655	RES	NCA08	44	45	1	Noticeable
LOT 113 CROWN STREET, THE ROCK NSW 2655	RES	NCA08	44	45	1	Noticeable
10 STREVENS ST, THE ROCK NSW 2655	RES	NCA08	44	45	1	Noticeable
50 NICHOLAS ST, THE ROCK NSW 2655	RES	NCA08	44	45	1	Noticeable
79 KING ST, THE ROCK NSW 2655	RES	NCA08	44	45	1	Noticeable
76 KING ST, THE ROCK NSW 2655	RES	NCA08	44	45	1	Noticeable
97 URANA ST, THE ROCK NSW 2655	RES	NCA08	44	45	1	Noticeable
93 URANA ST, THE ROCK NSW 2655	RES	NCA08	44	45	1	Noticeable
79 URANA ST, THE ROCK NSW 2655	RES	NCA08	44	45	1	Noticeable
81 URANA ST, THE ROCK NSW 2655	RES	NCA08	44	45	1	Noticeable
73 URANA ST, THE ROCK NSW 2655	RES	NCA08	44	45	1	Noticeable
4 QUEEN ST, THE ROCK NSW 2655	RES	NCA08	44	45	1	Noticeable
LOT 27 13 EMILY STREET, THE ROCK NSW 2655	RES	NCA08	44	45	1	Noticeable

Results by Receiver

Address	Land Use	Noise Catchment Area	Construction Noise Management Level, dBA	Predicted Noise Level, dBA	Predicted Noise Level Above Noise Management Level, dB	Noise Category
4760 OLYMPIC HWY, THE ROCK NSW 2655	OHO	NCA08	60	61	1	Noticeable
13 MIXNER STREET, THE ROCK NSW 2655	RES	NCA08	44	45	1	Noticeable

Recommended Mitigation Measures

This assessment has been conducted with regard to the relevant CNVIS and CNVMP. To manage noise and vibration impacts, project specific mitigation measures may be considered such as reviewing construction staging methodology to identify opportunities to schedule intensive works during less sensitive time periods and by providing a clear process for community engagement and complaints. Likewise, the requirements and actionable items within the overarching CNVIS and CNVMP should be considered and adopted where appropriate. Following the consideration of project specific noise mitigation measures, additional noise mitigation measures to be explored are described in the Inland Rail NSW Construction Noise and Vibration Framework (CNVF) and summarised below.

Airborne Noise - Additional Mitigation Measures Matrix				
Time Period	Exceedance of NML	Perception	Duration	Communication Category/Management Measure
OOHW Daytime Period Sunday 7am - 6pm (including public holidays)	<5	Noticeable	Any	CO1
	5 - 15	Clearly audible	Any	CO1
	16 - 25	Moderately intrusive	Any	CO1, CO2
	>25	Highly intrusive	Any	CO1, CO2
OOHW Evening Period Monday - Sunday 6pm - 10pm (including public holidays)	<5	Noticeable	Any	CO1
	5 - 15	Clearly audible	Any	CO1
	16 - 25	Moderately intrusive	Any	CO1, CO2
	>25	Highly intrusive	Any >2 consecutive rest periods	CO1, CO2
OOHW Night Period Monday - Sunday 10pm - 7am (including public holidays)	<5	Noticeable	Any	CO1
	5 - 15	Clearly audible	Any	CO1
	16 - 25	Moderately intrusive	Any	CO1, CO2
			>2 consecutive sleep periods	CO1, CO2, RO, AO
	>25	Highly intrusive	Any >2 consecutive sleep periods	CO1, CO2, RO

Vibration - Additional Mitigation Measures Matrix

Time Period	Duration	Exceedance of 'preferred' value	Exceedance of 'maximum' value
OOHW Daytime Period Sunday 8am-6pm	Any	CO1, CO2	CO1, CO2, RO
OOHW Evening Period Mon-Sun 6pm-10pm	Any	CO1, CO2	CO1, CO2, RO
OOHW Night Period Mon-Sat 10pm-7am Sun 10pm-8am	Any	CO1, CO2, RO	CO1, CO2, RO, AltA

Additional Mitigation Measures

Measure	Abbreviation
Communication (Category 1) ¹	CO1
Communication (Category 2) ²	CO2
Respite Offer ³	RO
Alternative Accommodation	AltA
Agreement with Owners	AO

Note 1: CO1: Communication to provide information on the OOHW via methods such as letter box drop, email, newsletter, media advertisements and/ or website prior to the works commencing.

Note 2: CO2: Communication should be personalised (e.g. door knock, meeting, telephone call). Contact with these residents should commence early to enable feedback to be considered by the proposal.

Note 3: RO are not applicable to non-residential receivers. RO may comprise of pre-purchased movie tickets, dinner vouchers or similar. RO can also be provided by limiting high noise generating works and allowing at least a one-hour respite period between blocks of work. Where possible, the timing of this respite should be discussed with the impacted community.

Receiver Types

Code	Description	Code	Description
RES	Residential	OED	Other Educational
COM	Commercial	OHO	Other Hotel
IND	Industrial	OLI	Other Library
OOA	Other Outdoor Active Recreation	OME	Other Medical
OOP	Other Outdoor Passive Recreation	OPW	Other Place of Worship
OCC	Other Child Care	OPB	Other Public Building



APPENDIX B

SLR Predict (W.002)



Construction Noise and Vibration Impact Statement (CNVIS)

This report presents the outcomes of detailed noise/vibration modelling relating to specific construction activities proposed on site in accordance with the methodology outlined in the *Construction Noise and Vibration Management Plan* (CNVMP) and overarching *Construction Noise and Vibration Impact Statement* (CNVIS).

Prior to detailed noise/vibration modelling being undertaken, work activities are reviewed and considered in relation to industry best practice, consistent with the requirements of the CNVMP. Consideration is first given to eliminating the noise/vibration emissions so far as reasonably practicable. Where elimination is not practicable, efforts are been made to reduce the risk as far as practical by implementing noise and vibration management measures as outlined in the overarching CNVIS and CNVMP.

Examples of these measures include selecting the quietest equipment and processes to complete the works, considering staging and periods of respite to minimise prolonged periods of noise and vibration exposure, and maximising distances between construction activities and sensitive receivers.

Consultation with Affected Receivers

In accordance with CoA E78, the CNVIS must include specific mitigation measures identified through consultation with affected sensitive land user(s) and the mitigation measures must be implemented for the duration of the Work. Details of this consultation are provided in the overarching CNVIS for each enhancement site.

Assessment Details

Author Name	
Author Email	noiseassessments@martinus.com.au
Author Organisation	Martinus Rail
Project Name	A2I - Albury to Illabo
Assessment Name	The Rock Addendum - W.002
Stage	A2I Construction
Permit Number	N/A
Start Date	2025-12-01
End Date	2025-12-02
Assessment Period	Night - out of hours

Equipment Details

Plant/Equipment	Equipment Sound Power Level (Unadjusted), dBA	Number of Units	Temporary Noise Barrier
1: Work Area (Height: Ground)	Total: 116		
Compressor 100% operation	109	1	No
Crane Franna (20 tonne) 30% operation	98	1	No
Front End Loader 50% operation	113	1	No
Generator - attenuated 100% operation	92	1	No
Hand tools (electric) 75% operation	102	1	No
Light Vehicle (accelerating) 25% operation	95	15	No
Truck - road truck/ truck & dog (30T) 25% operation	108	2	No
Truck - vacuum (NDD or non-destructive digger) 100% operation	109	1	No

Note 1: Equipment classed as 'annoying' in the *Interim Construction Noise Guideline (DECC, 2009)* include a 5 dB correction.

Note 2: Equipment sound power levels consider the mitigation measures outlined in the overarching CNVIS to provide mitigated results.

Equipment Details

Plant/Equipment	Equipment Sound Power Level (Unadjusted), dBA	Number of Units	Temporary Noise Barrier
Welding Equipment 100% operation	110	1	No

Note 1: Equipment classed as ‘annoying’ in the *Interim Construction Noise Guideline (DECC, 2009)* include a 5 dB correction.

Note 2: Equipment sound power levels consider the mitigation measures outlined in the overarching CNVIS to provide mitigated results.

Assessment Results



		Residential	Non-Residential
	Highly Intrusive	25 properties	0 property
	Moderately Intrusive	103 properties	0 property
	Clearly Audible	197 properties	1 property
	Noticeable	86 properties	0 property
	Above Sleep Disturbance	99 properties	0 property

Assessment Results



Above Sleep Awake

13 properties

0 property

Legend



Project Boundary



Work Areas



Barriers

Results by Receiver

Address	Land Use	Noise Catchment Area	Construction Noise Management Level, dBA	Predicted Noise Level, dBA	Predicted Noise Level Above Noise Management Level, dB	Noise Category
22 RAILWAY ST, THE ROCK NSW 2655	RES	NCA08	35	80	45	Highly Intrusive Above Sleep Dist Above Sleep Awake
25 DAVIDSON ST, THE ROCK NSW 2655	RES	NCA08	35	80	45	Highly Intrusive Above Sleep Dist Above Sleep Awake
23 DAVIDSON ST, THE ROCK NSW 2655	RES	NCA08	35	76	41	Highly Intrusive Above Sleep Dist Above Sleep Awake

Results by Receiver

Address	Land Use	Noise Catchment Area	Construction Noise Management Level, dBA	Predicted Noise Level, dBA	Predicted Noise Level Above Noise Management Level, dB	Noise Category
131 URANA ST, THE ROCK NSW 2655	RES	NCA08	35	73	38	Highly Intrusive Above Sleep Dist Above Sleep Awake
158 URANA ST, THE ROCK NSW 2655	RES	NCA08	35	71	36	Highly Intrusive Above Sleep Dist Above Sleep Awake
30 DAVIDSON ST, THE ROCK NSW 2655	RES	NCA08	35	71	36	Highly Intrusive Above Sleep Dist Above Sleep Awake
148 URANA ST, THE ROCK NSW 2655	RES	NCA08	35	70	35	Highly Intrusive Above Sleep Dist Above Sleep Awake
28 DAVIDSON ST, THE ROCK NSW 2655	RES	NCA08	35	69	34	Highly Intrusive Above Sleep Dist Above Sleep Awake
32 RAILWAY ST, THE ROCK NSW 2655	RES	NCA08	35	68	33	Highly Intrusive Above Sleep Dist Above Sleep Awake

Results by Receiver

Address	Land Use	Noise Catchment Area	Construction Noise Management Level, dBA	Predicted Noise Level, dBA	Predicted Noise Level Above Noise Management Level, dB	Noise Category
23 RAILWAY ST, THE ROCK NSW 2655	RES	NCA08	35	67	32	Highly Intrusive Above Sleep Dist Above Sleep Awake
25 RAILWAY ST, THE ROCK NSW 2655	RES	NCA08	35	67	32	Highly Intrusive Above Sleep Dist Above Sleep Awake
15 DAVIDSON ST, THE ROCK NSW 2655	RES	NCA08	35	67	32	Highly Intrusive Above Sleep Dist Above Sleep Awake
21 RAILWAY ST, THE ROCK NSW 2655	RES	NCA08	35	66	31	Highly Intrusive Above Sleep Dist Above Sleep Awake
24 DAVIDSON ST, THE ROCK NSW 2655	RES	NCA08	35	66	31	Highly Intrusive Above Sleep Dist
127 URANA ST, THE ROCK NSW 2655	RES	NCA08	35	65	30	Highly Intrusive Above Sleep Dist
34 RAILWAY ST, THE ROCK NSW 2655	RES	NCA08	35	65	30	Highly Intrusive Above Sleep Dist

Results by Receiver

Address	Land Use	Noise Catchment Area	Construction Noise Management Level, dBA	Predicted Noise Level, dBA	Predicted Noise Level Above Noise Management Level, dB	Noise Category
13 DAVIDSON ST, THE ROCK NSW 2655	RES	NCA08	35	64	29	Highly Intrusive Above Sleep Dist
22 DAVIDSON ST, THE ROCK NSW 2655	RES	NCA08	35	64	29	Highly Intrusive Above Sleep Dist
20 DAVIDSON ST, THE ROCK NSW 2655	RES	NCA08	35	63	28	Highly Intrusive Above Sleep Dist
17 RAILWAY ST, THE ROCK NSW 2655	RES	NCA08	35	62	27	Highly Intrusive Above Sleep Dist
11 DAVIDSON ST, THE ROCK NSW 2655	RES	NCA08	35	62	27	Highly Intrusive Above Sleep Dist
60 EMILY ST, THE ROCK NSW 2655	RES	NCA08	35	61	26	Highly Intrusive Above Sleep Dist
7 DAVIDSON ST, THE ROCK NSW 2655	RES	NCA08	35	61	26	Highly Intrusive Above Sleep Dist
16 DAVIDSON ST, THE ROCK NSW 2655	RES	NCA08	35	61	26	Highly Intrusive Above Sleep Dist
27 NORMAN ST, THE ROCK NSW 2655	RES	NCA08	35	61	26	Highly Intrusive Above Sleep Dist
56 SCOTT ST, THE ROCK NSW 2655	RES	NCA08	35	60	25	Moderately Intrusive Above Sleep Dist

Results by Receiver

Address	Land Use	Noise Catchment Area	Construction Noise Management Level, dBA	Predicted Noise Level, dBA	Predicted Noise Level Above Noise Management Level, dB	Noise Category
90 NICHOLAS ST, THE ROCK NSW 2655	RES	NCA08	35	60	25	Moderately Intrusive Above Sleep Dist
38 RAILWAY ST, THE ROCK NSW 2655	RES	NCA08	35	60	25	Moderately Intrusive Above Sleep Dist
40-42 RAILWAY ST, THE ROCK NSW 2655	RES	NCA08	35	60	25	Moderately Intrusive Above Sleep Dist
5 DAVIDSON ST, THE ROCK NSW 2655	RES	NCA08	35	60	25	Moderately Intrusive Above Sleep Dist
14 DAVIDSON ST, THE ROCK NSW 2655	RES	NCA08	35	60	25	Moderately Intrusive Above Sleep Dist
12 DAVIDSON ST, THE ROCK NSW 2655	RES	NCA08	35	60	25	Moderately Intrusive Above Sleep Dist
19 NORMAN ST, THE ROCK NSW 2655	RES	NCA08	35	60	25	Moderately Intrusive Above Sleep Dist
9 DAVIDSON ST, THE ROCK NSW 2655	RES	NCA08	35	59	24	Moderately Intrusive Above Sleep Dist
2 DAY ST, THE ROCK NSW 2655	RES	NCA08	35	59	24	Moderately Intrusive Above Sleep Dist
25 NORMAN ST, THE ROCK NSW 2655	RES	NCA08	35	59	24	Moderately Intrusive Above Sleep Dist

Results by Receiver

Address	Land Use	Noise Catchment Area	Construction Noise Management Level, dBA	Predicted Noise Level, dBA	Predicted Noise Level Above Noise Management Level, dB	Noise Category
10 DAVIDSON ST, THE ROCK NSW 2655	RES	NCA08	35	59	24	Moderately Intrusive Above Sleep Dist
15 NORMAN ST, THE ROCK NSW 2655	RES	NCA08	35	59	24	Moderately Intrusive Above Sleep Dist
54 SCOTT ST, THE ROCK NSW 2655	RES	NCA08	35	58	23	Moderately Intrusive Above Sleep Dist
51-53 EMILY ST, THE ROCK NSW 2655	RES	NCA08	35	58	23	Moderately Intrusive Above Sleep Dist
86 NICHOLAS ST, THE ROCK NSW 2655	RES	NCA08	35	58	23	Moderately Intrusive Above Sleep Dist
82 NICHOLAS ST, THE ROCK NSW 2655	RES	NCA08	35	58	23	Moderately Intrusive Above Sleep Dist
36 RAILWAY ST, THE ROCK NSW 2655	RES	NCA08	35	58	23	Moderately Intrusive Above Sleep Dist
23 NORMAN ST, THE ROCK NSW 2655	RES	NCA08	35	58	23	Moderately Intrusive Above Sleep Dist
27A NORMAN ST, THE ROCK NSW 2655	RES	NCA08	35	58	23	Moderately Intrusive Above Sleep Dist
21 NORMAN ST, THE ROCK NSW 2655	RES	NCA08	35	58	23	Moderately Intrusive Above Sleep Dist

Results by Receiver

Address	Land Use	Noise Catchment Area	Construction Noise Management Level, dBA	Predicted Noise Level, dBA	Predicted Noise Level Above Noise Management Level, dB	Noise Category
6 DAVIDSON ST, THE ROCK NSW 2655	RES	NCA08	35	58	23	Moderately Intrusive Above Sleep Dist
9 EMILY STREET, THE ROCK NSW 2655	RES	NCA08	35	58	23	Moderately Intrusive Above Sleep Dist
11 NORMAN ST, THE ROCK NSW 2655	RES	NCA08	35	58	23	Moderately Intrusive Above Sleep Dist
49 SCOTT ST, THE ROCK NSW 2655	RES	NCA08	35	57	22	Moderately Intrusive Above Sleep Dist
48-50 SCOTT ST, THE ROCK NSW 2655	RES	NCA08	35	57	22	Moderately Intrusive Above Sleep Dist
54 EMILY ST, THE ROCK NSW 2655	RES	NCA08	35	57	22	Moderately Intrusive Above Sleep Dist
117 URANA ST, THE ROCK NSW 2655	RES	NCA08	35	57	22	Moderately Intrusive Above Sleep Dist
3 DAVIDSON ST, THE ROCK NSW 2655	RES	NCA08	35	57	22	Moderately Intrusive Above Sleep Dist
118 URANA ST, THE ROCK NSW 2655	RES	NCA08	35	57	22	Moderately Intrusive Above Sleep Dist
29 NORMAN ST, THE ROCK NSW 2655	RES	NCA08	35	57	22	Moderately Intrusive Above Sleep Dist

Results by Receiver

Address	Land Use	Noise Catchment Area	Construction Noise Management Level, dBA	Predicted Noise Level, dBA	Predicted Noise Level Above Noise Management Level, dB	Noise Category
8 DAVIDSON ST, THE ROCK NSW 2655	RES	NCA08	35	57	22	Moderately Intrusive Above Sleep Dist
18 NORMAN ST, THE ROCK NSW 2655	RES	NCA08	35	57	22	Moderately Intrusive Above Sleep Dist
LOT 1 EMILY STREET, THE ROCK NSW 2655	RES	NCA08	35	56	21	Moderately Intrusive Above Sleep Dist
5A JOHN ST, THE ROCK NSW 2655	RES	NCA08	35	56	21	Moderately Intrusive Above Sleep Dist
1 DAVIDSON ST, THE ROCK NSW 2655	RES	NCA08	35	56	21	Moderately Intrusive Above Sleep Dist
31 NORMAN ST, THE ROCK NSW 2655	RES	NCA08	35	56	21	Moderately Intrusive Above Sleep Dist
33-35 NORMAN ST, THE ROCK NSW 2655	RES	NCA08	35	56	21	Moderately Intrusive Above Sleep Dist
4 DAVIDSON ST, THE ROCK NSW 2655	RES	NCA08	35	56	21	Moderately Intrusive Above Sleep Dist
108 URANA ST, THE ROCK NSW 2655	RES	NCA08	35	56	21	Moderately Intrusive Above Sleep Dist
12 NORMAN ST, THE ROCK NSW 2655	RES	NCA08	35	56	21	Moderately Intrusive Above Sleep Dist

Results by Receiver

Address	Land Use	Noise Catchment Area	Construction Noise Management Level, dBA	Predicted Noise Level, dBA	Predicted Noise Level Above Noise Management Level, dB	Noise Category
8 NORMAN ST, THE ROCK NSW 2655	RES	NCA08	35	56	21	Moderately Intrusive Above Sleep Dist
47 SCOTT ST, THE ROCK NSW 2655	RES	NCA08	35	55	20	Moderately Intrusive Above Sleep Dist
1 JOHN ST, THE ROCK NSW 2655	RES	NCA08	35	55	20	Moderately Intrusive Above Sleep Dist
121 URANA ST, THE ROCK NSW 2655	RES	NCA08	35	55	20	Moderately Intrusive Above Sleep Dist
117 URANA ST, THE ROCK NSW 2655	RES	NCA08	35	55	20	Moderately Intrusive Above Sleep Dist
13 JOHN ST, THE ROCK NSW 2655	RES	NCA08	35	55	20	Moderately Intrusive Above Sleep Dist
44-46 RAILWAY ST, THE ROCK NSW 2655	RES	NCA08	35	55	20	Moderately Intrusive Above Sleep Dist
4 DAY ST, THE ROCK NSW 2655	RES	NCA08	35	55	20	Moderately Intrusive Above Sleep Dist
17 NORMAN ST, THE ROCK NSW 2655	RES	NCA08	35	55	20	Moderately Intrusive Above Sleep Dist
110 URANA ST, THE ROCK NSW 2655	RES	NCA08	35	55	20	Moderately Intrusive Above Sleep Dist

Results by Receiver

Address	Land Use	Noise Catchment Area	Construction Noise Management Level, dBA	Predicted Noise Level, dBA	Predicted Noise Level Above Noise Management Level, dB	Noise Category
2 DAVIDSON ST, THE ROCK NSW 2655	RES	NCA08	35	55	20	Moderately Intrusive Above Sleep Dist
106 URANA ST, THE ROCK NSW 2655	RES	NCA08	35	55	20	Moderately Intrusive Above Sleep Dist
104 URANA ST, THE ROCK NSW 2655	RES	NCA08	35	55	20	Moderately Intrusive Above Sleep Dist
44 SCOTT ST, THE ROCK NSW 2655	RES	NCA08	35	54	19	Moderately Intrusive Above Sleep Dist
5 JOHN ST, THE ROCK NSW 2655	RES	NCA08	35	54	19	Moderately Intrusive Above Sleep Dist
7-9 JOHN ST, THE ROCK NSW 2655	RES	NCA08	35	54	19	Moderately Intrusive Above Sleep Dist
KNIGHTLEY COTTAGES 15 JOHN ST, THE ROCK NSW 2655	RES	NCA08	35	54	19	Moderately Intrusive Above Sleep Dist
112-114 URANA ST, THE ROCK NSW 2655	RES	NCA08	35	54	19	Moderately Intrusive Above Sleep Dist
10 DAY ST, THE ROCK NSW 2655	RES	NCA08	35	54	19	Moderately Intrusive Above Sleep Dist
13 BURKES ST, THE ROCK NSW 2655	RES	NCA08	35	54	19	Moderately Intrusive Above Sleep Dist

Results by Receiver

Address	Land Use	Noise Catchment Area	Construction Noise Management Level, dBA	Predicted Noise Level, dBA	Predicted Noise Level Above Noise Management Level, dB	Noise Category
16 DAY STREET, THE ROCK NSW 2655	RES	NCA08	35	54	19	Moderately Intrusive Above Sleep Dist
20 NORMAN ST, THE ROCK NSW 2655	RES	NCA08	35	54	19	Moderately Intrusive Above Sleep Dist
9 NORMAN ST, THE ROCK NSW 2655	RES	NCA08	35	54	19	Moderately Intrusive Above Sleep Dist
22 NORMAN ST, THE ROCK NSW 2655	RES	NCA08	35	54	19	Moderately Intrusive Above Sleep Dist
LOT 13 22 CARSON ROAD, THE ROCK NSW 2655	RES	NCA08	35	54	19	Moderately Intrusive Above Sleep Dist
32 SCOTT ST, THE ROCK NSW 2655	RES	NCA08	35	53	18	Moderately Intrusive
33 SCOTT ST, THE ROCK NSW 2655	RES	NCA08	35	53	18	Moderately Intrusive Above Sleep Dist
36 MANGOPLAH RD, THE ROCK NSW 2655	RES	NCA08	35	53	18	Moderately Intrusive Above Sleep Dist
13 RAILWAY ST, THE ROCK NSW 2655	RES	NCA08	35	53	18	Moderately Intrusive
13 RAILWAY ST, THE ROCK NSW 2655	RES	NCA08	35	53	18	Moderately Intrusive Above Sleep Dist
89 NICHOLAS ST, THE ROCK NSW 2655	RES	NCA08	35	53	18	Moderately Intrusive Above Sleep Dist

Results by Receiver

Address	Land Use	Noise Catchment Area	Construction Noise Management Level, dBA	Predicted Noise Level, dBA	Predicted Noise Level Above Noise Management Level, dB	Noise Category
6 DAY ST, THE ROCK NSW 2655	RES	NCA08	35	53	18	Moderately Intrusive Above Sleep Dist
5 NORMAN ST, THE ROCK NSW 2655	RES	NCA08	35	53	18	Moderately Intrusive Above Sleep Dist
14 NORMAN ST, THE ROCK NSW 2655	RES	NCA08	35	53	18	Moderately Intrusive
10 NORMAN ST, THE ROCK NSW 2655	RES	NCA08	35	53	18	Moderately Intrusive Above Sleep Dist
LOT 13 22 CARSON ROAD, THE ROCK NSW 2655	RES	NCA08	35	53	18	Moderately Intrusive Above Sleep Dist
25 SCOTT ST, THE ROCK NSW 2655	RES	NCA08	35	52	17	Moderately Intrusive
31 SCOTT ST, THE ROCK NSW 2655	RES	NCA08	35	52	17	Moderately Intrusive
39 SCOTT ST, THE ROCK NSW 2655	RES	NCA08	35	52	17	Moderately Intrusive
40-42 SCOTT ST, THE ROCK NSW 2655	RES	NCA08	35	52	17	Moderately Intrusive
13A RAILWAY ST, THE ROCK NSW 2655	RES	NCA08	35	52	17	Moderately Intrusive
8 DAY ST, THE ROCK NSW 2655	RES	NCA08	35	52	17	Moderately Intrusive
7 NORMAN ST, THE ROCK NSW 2655	RES	NCA08	35	52	17	Moderately Intrusive
100 URANA ST, THE ROCK NSW 2655	RES	NCA08	35	52	17	Moderately Intrusive
3 NORMAN ST, THE ROCK NSW 2655	RES	NCA08	35	52	17	Moderately Intrusive

Results by Receiver

Address	Land Use	Noise Catchment Area	Construction Noise Management Level, dBA	Predicted Noise Level, dBA	Predicted Noise Level Above Noise Management Level, dB	Noise Category
1 NORMAN ST, THE ROCK NSW 2655	RES	NCA08	35	52	17	Moderately Intrusive
LOT 6 12 CARSON ROAD, THE ROCK NSW 2655	RES	NCA08	35	52	17	Moderately Intrusive
LOT 10 20 CARSON ROAD, THE ROCK NSW 2655	RES	NCA08	35	52	17	Moderately Intrusive
21 SCOTT ST, THE ROCK NSW 2655	RES	NCA08	35	51	16	Moderately Intrusive
36-38 SCOTT ST, THE ROCK NSW 2655	RES	NCA08	35	51	16	Moderately Intrusive
LOT 103 RAILWAY STREET, THE ROCK NSW 2655	RES	NCA08	35	51	16	Moderately Intrusive
43-45 EMILY ST, THE ROCK NSW 2655	RES	NCA08	35	51	16	Moderately Intrusive
2 JOHN ST, THE ROCK NSW 2655	RES	NCA08	35	51	16	Moderately Intrusive
66 NICHOLAS ST, THE ROCK NSW 2655	RES	NCA08	35	51	16	Moderately Intrusive
66 NICHOLAS ST, THE ROCK NSW 2655	RES	NCA08	35	51	16	Moderately Intrusive
3 JOHN ST, THE ROCK NSW 2655	RES	NCA08	35	51	16	Moderately Intrusive
109A URANA ST, THE ROCK NSW 2655	RES	NCA08	35	51	16	Moderately Intrusive
90 KING ST, THE ROCK NSW 2655	RES	NCA08	35	51	16	Moderately Intrusive
92 KING ST, THE ROCK NSW 2655	RES	NCA08	35	51	16	Moderately Intrusive
18 DAY ST, THE ROCK NSW 2655	RES	NCA08	35	51	16	Moderately Intrusive

Results by Receiver

Address	Land Use	Noise Catchment Area	Construction Noise Management Level, dBA	Predicted Noise Level, dBA	Predicted Noise Level Above Noise Management Level, dB	Noise Category
6 NORMAN ST, THE ROCK NSW 2655	RES	NCA08	35	51	16	Moderately Intrusive
24-32 NORMAN ST, THE ROCK NSW 2655	RES	NCA08	35	51	16	Moderately Intrusive
17-19 SCOTT ST, THE ROCK NSW 2655	RES	NCA08	35	50	15	Clearly Audible
24 SCOTT ST, THE ROCK NSW 2655	RES	NCA08	35	50	15	Clearly Audible
25 SCOTT ST, THE ROCK NSW 2655	RES	NCA08	35	50	15	Clearly Audible
23 EMILY ST, THE ROCK NSW 2655	RES	NCA08	35	50	15	Clearly Audible
29 SCOTT ST, THE ROCK NSW 2655	RES	NCA08	35	50	15	Clearly Audible
LOT 101 PARK STREET, THE ROCK NSW 2655	RES	NCA08	35	50	15	Clearly Audible
27 EMILY ST, THE ROCK NSW 2655	RES	NCA08	35	50	15	Clearly Audible
LOT 1 STREVS STREET, THE ROCK NSW 2655	RES	NCA08	35	50	15	Clearly Audible
KNIGHTLEIGH COTTAGES 3/2 JOHN ST, THE ROCK NSW 2655	RES	NCA08	35	50	15	Clearly Audible
88 KING ST, THE ROCK NSW 2655	RES	NCA08	35	50	15	Clearly Audible
22 DAY ST, THE ROCK NSW 2655	RES	NCA08	35	50	15	Clearly Audible
34 NORMAN ST, THE ROCK NSW 2655	RES	NCA08	35	50	15	Clearly Audible
24 DAY ST, THE ROCK NSW 2655	RES	NCA08	35	50	15	Clearly Audible
2 NORMAN ST, THE ROCK NSW 2655	RES	NCA08	35	50	15	Clearly Audible

Results by Receiver

Address	Land Use	Noise Catchment Area	Construction Noise Management Level, dBA	Predicted Noise Level, dBA	Predicted Noise Level Above Noise Management Level, dB	Noise Category
4760 OLYMPIC HWY, THE ROCK NSW 2655	OHO	NCA08	45	60	15	Clearly Audible
60 NICHOLAS ST, THE ROCK NSW 2655	RES	NCA08	35	49	14	Clearly Audible
91 KING ST, THE ROCK NSW 2655	RES	NCA08	35	49	14	Clearly Audible
94 KING ST, THE ROCK NSW 2655	RES	NCA08	35	49	14	Clearly Audible
101 URANA ST, THE ROCK NSW 2655	RES	NCA08	35	49	14	Clearly Audible
95 URANA ST, THE ROCK NSW 2655	RES	NCA08	35	49	14	Clearly Audible
11 BURKES ST, THE ROCK NSW 2655	RES	NCA08	35	49	14	Clearly Audible
9 BURKES ST, THE ROCK NSW 2655	RES	NCA08	35	49	14	Clearly Audible
26 DAY ST, THE ROCK NSW 2655	RES	NCA08	35	49	14	Clearly Audible
1 FORD ST, THE ROCK NSW 2655	RES	NCA08	35	49	14	Clearly Audible
10 Carson Rd, The Rock NSW 2655	RES	NCA08	35	49	14	Clearly Audible
LOT 42 RAILWAY STREET, THE ROCK NSW 2655	RES	NCA08	35	49	14	Clearly Audible
10 CROWN ST, THE ROCK NSW 2655	RES	NCA08	35	48	13	Clearly Audible
4 PINE ST, THE ROCK NSW 2655	RES	NCA08	35	48	13	Clearly Audible
LOT 11 STREVEN'S STREET, THE ROCK NSW 2655	RES	NCA08	35	48	13	Clearly Audible
KNIGHTLEIGH COTTAGES 2/2 JOHN ST, THE ROCK NSW 2655	RES	NCA08	35	48	13	Clearly Audible

Results by Receiver

Address	Land Use	Noise Catchment Area	Construction Noise Management Level, dBA	Predicted Noise Level, dBA	Predicted Noise Level Above Noise Management Level, dB	Noise Category
58 NICHOLAS ST, THE ROCK NSW 2655	RES	NCA08	35	48	13	Clearly Audible
54 NICHOLAS ST, THE ROCK NSW 2655	RES	NCA08	35	48	13	Clearly Audible
83 KING ST, THE ROCK NSW 2655	RES	NCA08	35	48	13	Clearly Audible
96 KING ST, THE ROCK NSW 2655	RES	NCA08	35	48	13	Clearly Audible
86 KING ST, THE ROCK NSW 2655	RES	NCA08	35	48	13	Clearly Audible
99 URANA ST, THE ROCK NSW 2655	RES	NCA08	35	48	13	Clearly Audible
91 URANA ST, THE ROCK NSW 2655	RES	NCA08	35	48	13	Clearly Audible
7 BURKES ST, THE ROCK NSW 2655	RES	NCA08	35	48	13	Clearly Audible
5 BURKES ST, THE ROCK NSW 2655	RES	NCA08	35	48	13	Clearly Audible
LOT A FORD STREET, THE ROCK NSW 2655	RES	NCA08	35	48	13	Clearly Audible
30 DAY ST, THE ROCK NSW 2655	RES	NCA08	35	48	13	Clearly Audible
4 BURKES ST, THE ROCK NSW 2655	RES	NCA08	35	48	13	Clearly Audible
34 DAY ST, THE ROCK NSW 2655	RES	NCA08	35	48	13	Clearly Audible
38 DAY ST, THE ROCK NSW 2655	RES	NCA08	35	48	13	Clearly Audible
21 ISLAND BEND LANE, THE ROCK NSW 2655	RES	NCA08	35	48	13	Clearly Audible
LOT 5 10 CARSON ROAD, THE ROCK NSW 2655	RES	NCA08	35	48	13	Clearly Audible
LOT 28 EMILY STREET, THE ROCK NSW 2655	RES	NCA08	35	47	12	Clearly Audible

Results by Receiver

Address	Land Use	Noise Catchment Area	Construction Noise Management Level, dBA	Predicted Noise Level, dBA	Predicted Noise Level Above Noise Management Level, dB	Noise Category
14-16 SCOTT ST, THE ROCK NSW 2655	RES	NCA08	35	47	12	Clearly Audible
18-20 SCOTT ST, THE ROCK NSW 2655	RES	NCA08	35	47	12	Clearly Audible
13 HILL ST, THE ROCK NSW 2655	RES	NCA08	35	47	12	Clearly Audible
2 STREVENS ST, THE ROCK NSW 2655	RES	NCA08	35	47	12	Clearly Audible
52 NICHOLAS ST, THE ROCK NSW 2655	RES	NCA08	35	47	12	Clearly Audible
84 KING ST, THE ROCK NSW 2655	RES	NCA08	35	47	12	Clearly Audible
103 URANA ST, THE ROCK NSW 2655	RES	NCA08	35	47	12	Clearly Audible
82 KING ST, THE ROCK NSW 2655	RES	NCA08	35	47	12	Clearly Audible
99 URANA ST, THE ROCK NSW 2655	RES	NCA08	35	47	12	Clearly Audible
83 URANA ST, THE ROCK NSW 2655	RES	NCA08	35	47	12	Clearly Audible
Lot 5, Plan 5/4/758971, The Rock, NSW 2655	RES	NCA08	35	47	12	Clearly Audible
4 Carson Rd, The Rock NSW 2655	RES	NCA08	35	47	12	Clearly Audible
9 CARSON ROAD, THE ROCK NSW 2655	RES	NCA08	35	47	12	Clearly Audible
9A MILNE RD, THE ROCK NSW 2655	RES	NCA08	35	46	11	Clearly Audible
4 MILNE RD, THE ROCK NSW 2655	RES	NCA08	35	46	11	Clearly Audible
6-8 SCOTT ST, THE ROCK NSW 2655	RES	NCA08	35	46	11	Clearly Audible
30 EMILY ST, THE ROCK NSW 2655	RES	NCA08	35	46	11	Clearly Audible

Results by Receiver

Address	Land Use	Noise Catchment Area	Construction Noise Management Level, dBA	Predicted Noise Level, dBA	Predicted Noise Level Above Noise Management Level, dB	Noise Category
11 HILL ST, THE ROCK NSW 2655	RES	NCA08	35	46	11	Clearly Audible
LOT 88 PARK STREET, THE ROCK NSW 2655	RES	NCA08	35	46	11	Clearly Audible
62 NICHOLAS ST, THE ROCK NSW 2655	RES	NCA08	35	46	11	Clearly Audible
87 KING ST, THE ROCK NSW 2655	RES	NCA08	35	46	11	Clearly Audible
113 URANA ST, THE ROCK NSW 2655	RES	NCA08	35	46	11	Clearly Audible
78 KING ST, THE ROCK NSW 2655	RES	NCA08	35	46	11	Clearly Audible
87 URANA ST, THE ROCK NSW 2655	RES	NCA08	35	46	11	Clearly Audible
85 URANA ST, THE ROCK NSW 2655	RES	NCA08	35	46	11	Clearly Audible
104 URANA ST, THE ROCK NSW 2655	RES	NCA08	35	46	11	Clearly Audible
23 ISLAND BEND LANE, THE ROCK NSW 2655	RES	NCA08	35	46	11	Clearly Audible
LOT 1 2 CARSON ROAD, THE ROCK NSW 2655	RES	NCA08	35	46	11	Clearly Audible
15 MILNE RD, THE ROCK NSW 2655	RES	NCA08	35	45	10	Clearly Audible
20 MILNE RD, THE ROCK NSW 2655	RES	NCA08	35	45	10	Clearly Audible
12 MILNE RD, THE ROCK NSW 2655	RES	NCA08	35	45	10	Clearly Audible
1 SCOTT ST, THE ROCK NSW 2655	RES	NCA08	35	45	10	Clearly Audible
2 SCOTT ST, THE ROCK NSW 2655	RES	NCA08	35	45	10	Clearly Audible
5-7 SCOTT ST, THE ROCK NSW 2655	RES	NCA08	35	45	10	Clearly Audible

Results by Receiver

Address	Land Use	Noise Catchment Area	Construction Noise Management Level, dBA	Predicted Noise Level, dBA	Predicted Noise Level Above Noise Management Level, dB	Noise Category
5 HILL ST, THE ROCK NSW 2655	RES	NCA08	35	45	10	Clearly Audible
26 MILNE RD, THE ROCK NSW 2655	RES	NCA08	35	45	10	Clearly Audible
10-12 SCOTT ST, THE ROCK NSW 2655	RES	NCA08	35	45	10	Clearly Audible
13-15 SCOTT ST, THE ROCK NSW 2655	RES	NCA08	35	45	10	Clearly Audible
17 EMILY ST, THE ROCK NSW 2655	RES	NCA08	35	45	10	Clearly Audible
LOT 113 CROWN STREET, THE ROCK NSW 2655	RES	NCA08	35	45	10	Clearly Audible
10 STREVENS ST, THE ROCK NSW 2655	RES	NCA08	35	45	10	Clearly Audible
85 KING ST, THE ROCK NSW 2655	RES	NCA08	35	45	10	Clearly Audible
79 KING ST, THE ROCK NSW 2655	RES	NCA08	35	45	10	Clearly Audible
8 MIXNER ST, THE ROCK NSW 2655	RES	NCA08	35	45	10	Clearly Audible
76 KING ST, THE ROCK NSW 2655	RES	NCA08	35	45	10	Clearly Audible
97 URANA ST, THE ROCK NSW 2655	RES	NCA08	35	45	10	Clearly Audible
93 URANA ST, THE ROCK NSW 2655	RES	NCA08	35	45	10	Clearly Audible
79 URANA ST, THE ROCK NSW 2655	RES	NCA08	35	45	10	Clearly Audible
81 URANA ST, THE ROCK NSW 2655	RES	NCA08	35	45	10	Clearly Audible
73 URANA ST, THE ROCK NSW 2655	RES	NCA08	35	45	10	Clearly Audible
4 QUEEN ST, THE ROCK NSW 2655	RES	NCA08	35	45	10	Clearly Audible
LOT 27 13 EMILY STREET, THE ROCK NSW 2655	RES	NCA08	35	45	10	Clearly Audible

Results by Receiver

Address	Land Use	Noise Catchment Area	Construction Noise Management Level, dBA	Predicted Noise Level, dBA	Predicted Noise Level Above Noise Management Level, dB	Noise Category
13 MIXNER STREET, THE ROCK NSW 2655	RES	NCA08	35	45	10	Clearly Audible
17 MILNE RD, THE ROCK NSW 2655	RES	NCA08	35	44	9	Clearly Audible
9B MILNE RD, THE ROCK NSW 2655	RES	NCA08	35	44	9	Clearly Audible
7 MILNE RD, THE ROCK NSW 2655	RES	NCA08	35	44	9	Clearly Audible
1 MILNE RD, THE ROCK NSW 2655	RES	NCA08	35	44	9	Clearly Audible
LOT 94 HILL STREET, THE ROCK NSW 2655	RES	NCA08	35	44	9	Clearly Audible
4018 OLYMPIC HWY, THE ROCK NSW 2655	RES	NCA08	35	44	9	Clearly Audible
50 NICHOLAS ST, THE ROCK NSW 2655	RES	NCA08	35	44	9	Clearly Audible
38 NICHOLAS ST, THE ROCK NSW 2655	RES	NCA08	35	44	9	Clearly Audible
36 NICHOLAS ST, THE ROCK NSW 2655	RES	NCA08	35	44	9	Clearly Audible
34 NICHOLAS ST, THE ROCK NSW 2655	RES	NCA08	35	44	9	Clearly Audible
61 KING ST, THE ROCK NSW 2655	RES	NCA08	35	44	9	Clearly Audible
10 MIXNER ST, THE ROCK NSW 2655	RES	NCA08	35	44	9	Clearly Audible
76 URANA ST, THE ROCK NSW 2655	RES	NCA08	35	44	9	Clearly Audible
71 WILSON ST, THE ROCK NSW 2655	RES	NCA08	35	44	9	Clearly Audible
82 WILSON ST, THE ROCK NSW 2655	RES	NCA08	35	44	9	Clearly Audible

Results by Receiver

Address	Land Use	Noise Catchment Area	Construction Noise Management Level, dBA	Predicted Noise Level, dBA	Predicted Noise Level Above Noise Management Level, dB	Noise Category
6 QUEEN ST, THE ROCK NSW 2655	RES	NCA08	35	44	9	Clearly Audible
LOT 1 OLD TRUNK ROAD, THE ROCK NSW 2655	RES	NCA08	35	44	9	Clearly Audible
37 OLD TRUNK RD, THE ROCK NSW 2655	RES	NCA08	35	44	9	Clearly Audible
28 MILNE RD, THE ROCK NSW 2655	RES	NCA08	35	43	8	Clearly Audible
5 CROWN ST, THE ROCK NSW 2655	RES	NCA08	35	43	8	Clearly Audible
7 CROWN ST, THE ROCK NSW 2655	RES	NCA08	35	43	8	Clearly Audible
8 HILL ST, THE ROCK NSW 2655	RES	NCA08	35	43	8	Clearly Audible
7-7 NICHOLAS ST, THE ROCK NSW 2655	RES	NCA08	35	43	8	Clearly Audible
44 NICHOLAS ST, THE ROCK NSW 2655	RES	NCA08	35	43	8	Clearly Audible
42 NICHOLAS ST, THE ROCK NSW 2655	RES	NCA08	35	43	8	Clearly Audible
28 NICHOLAS ST, THE ROCK NSW 2655	RES	NCA08	35	43	8	Clearly Audible
30 NICHOLAS ST, THE ROCK NSW 2655	RES	NCA08	35	43	8	Clearly Audible
71 KING ST, THE ROCK NSW 2655	RES	NCA08	35	43	8	Clearly Audible
65 KING ST, THE ROCK NSW 2655	RES	NCA08	35	43	8	Clearly Audible
66 KING ST, THE ROCK NSW 2655	RES	NCA08	35	43	8	Clearly Audible
74 KING ST, THE ROCK NSW 2655	RES	NCA08	35	43	8	Clearly Audible
64 KING ST, THE ROCK NSW 2655	RES	NCA08	35	43	8	Clearly Audible

Results by Receiver

Address	Land Use	Noise Catchment Area	Construction Noise Management Level, dBA	Predicted Noise Level, dBA	Predicted Noise Level Above Noise Management Level, dB	Noise Category
62 KING ST, THE ROCK NSW 2655	RES	NCA08	35	43	8	Clearly Audible
60 KING ST, THE ROCK NSW 2655	RES	NCA08	35	43	8	Clearly Audible
71 URANA ST, THE ROCK NSW 2655	RES	NCA08	35	43	8	Clearly Audible
63 URANA ST, THE ROCK NSW 2655	RES	NCA08	35	43	8	Clearly Audible
59 URANA ST, THE ROCK NSW 2655	RES	NCA08	35	43	8	Clearly Audible
74 URANA ST, THE ROCK NSW 2655	RES	NCA08	35	43	8	Clearly Audible
72 URANA ST, THE ROCK NSW 2655	RES	NCA08	35	43	8	Clearly Audible
68 URANA ST, THE ROCK NSW 2655	RES	NCA08	35	43	8	Clearly Audible
THE ROCK MEMORIAL BOWLING CLUB 86 URANA ST, THE ROCK NSW 2655	RES	NCA08	35	43	8	Clearly Audible
75 WILSON ST, THE ROCK NSW 2655	RES	NCA08	35	43	8	Clearly Audible
69 WILSON ST, THE ROCK NSW 2655	RES	NCA08	35	43	8	Clearly Audible
2 QUEEN ST, THE ROCK NSW 2655	RES	NCA08	35	43	8	Clearly Audible
10 QUEEN ST, THE ROCK NSW 2655	RES	NCA08	35	43	8	Clearly Audible
13 OLD TRUNK RD, THE ROCK NSW 2655	RES	NCA08	35	43	8	Clearly Audible
29 MIXNER ST, THE ROCK NSW 2655	RES	NCA08	35	43	8	Clearly Audible
48 OLD TRUNK RD, THE ROCK NSW 2655	RES	NCA08	35	43	8	Clearly Audible

Results by Receiver

Address	Land Use	Noise Catchment Area	Construction Noise Management Level, dBA	Predicted Noise Level, dBA	Predicted Noise Level Above Noise Management Level, dB	Noise Category
48 OLD TRUNK RD, THE ROCK NSW 2655	RES	NCA08	35	43	8	Clearly Audible
73 King St, The Rock NSW 2655	RES	NCA08	35	43	8	Clearly Audible
LOT 58	RES	NCA08	35	42	7	Clearly Audible
6 HILL ST, THE ROCK NSW 2655	RES	NCA08	35	42	7	Clearly Audible
9 HILL ST, THE ROCK NSW 2655	RES	NCA08	35	42	7	Clearly Audible
LOT 95 RAILWAY STREET, THE ROCK NSW 2655	RES	NCA08	35	42	7	Clearly Audible
40 NICHOLAS ST, THE ROCK NSW 2655	RES	NCA08	35	42	7	Clearly Audible
81 KING ST, THE ROCK NSW 2655	RES	NCA08	35	42	7	Clearly Audible
63 KING ST, THE ROCK NSW 2655	RES	NCA08	35	42	7	Clearly Audible
89 URANA ST, THE ROCK NSW 2655	RES	NCA08	35	42	7	Clearly Audible
75 URANA ST, THE ROCK NSW 2655	RES	NCA08	35	42	7	Clearly Audible
57 URANA ST, THE ROCK NSW 2655	RES	NCA08	35	42	7	Clearly Audible
49 URANA ST, THE ROCK NSW 2655	RES	NCA08	35	42	7	Clearly Audible
66 URANA ST, THE ROCK NSW 2655	RES	NCA08	35	42	7	Clearly Audible
64 URANA ST, THE ROCK NSW 2655	RES	NCA08	35	42	7	Clearly Audible
56 URANA ST, THE ROCK NSW 2655	RES	NCA08	35	42	7	Clearly Audible
67 WILSON ST, THE ROCK NSW 2655	RES	NCA08	35	42	7	Clearly Audible
21 MIXNER ST, THE ROCK NSW 2655	RES	NCA08	35	42	7	Clearly Audible

Results by Receiver

Address	Land Use	Noise Catchment Area	Construction Noise Management Level, dBA	Predicted Noise Level, dBA	Predicted Noise Level Above Noise Management Level, dB	Noise Category
23 MIXNER ST, THE ROCK NSW 2655	RES	NCA08	35	42	7	Clearly Audible
16 QUEEN ST, THE ROCK NSW 2655	RES	NCA08	35	42	7	Clearly Audible
13 OLD TRUNK RD, THE ROCK NSW 2655	RES	NCA08	35	42	7	Clearly Audible
119 OLD TRUNK RD, THE ROCK NSW 2655	RES	NCA08	35	42	7	Clearly Audible
36 THE ROCK-COLLINGULLIE ROAD, THE ROCK NSW 2655	RES	NCA08	35	42	7	Clearly Audible
3 CROWN ST, THE ROCK NSW 2655	RES	NCA08	35	41	6	Clearly Audible
7 RAILWAY ST, THE ROCK NSW 2655	RES	NCA08	35	41	6	Clearly Audible
16 YERONG ST, THE ROCK NSW 2655	RES	NCA08	35	41	6	Clearly Audible
32 NICHOLAS ST, THE ROCK NSW 2655	RES	NCA08	35	41	6	Clearly Audible
67 KING ST, THE ROCK NSW 2655	RES	NCA08	35	41	6	Clearly Audible
57 KING ST, THE ROCK NSW 2655	RES	NCA08	35	41	6	Clearly Audible
55 KING ST, THE ROCK NSW 2655	RES	NCA08	35	41	6	Clearly Audible
51 KING ST, THE ROCK NSW 2655	RES	NCA08	35	41	6	Clearly Audible
39 KING ST, THE ROCK NSW 2655	RES	NCA08	35	41	6	Clearly Audible
58 KING ST, THE ROCK NSW 2655	RES	NCA08	35	41	6	Clearly Audible
56 KING ST, THE ROCK NSW 2655	RES	NCA08	35	41	6	Clearly Audible

Results by Receiver

Address	Land Use	Noise Catchment Area	Construction Noise Management Level, dBA	Predicted Noise Level, dBA	Predicted Noise Level Above Noise Management Level, dB	Noise Category
54 KING ST, THE ROCK NSW 2655	RES	NCA08	35	41	6	Clearly Audible
52 KING ST, THE ROCK NSW 2655	RES	NCA08	35	41	6	Clearly Audible
50 KING ST, THE ROCK NSW 2655	RES	NCA08	35	41	6	Clearly Audible
65 URANA ST, THE ROCK NSW 2655	RES	NCA08	35	41	6	Clearly Audible
61 URANA ST, THE ROCK NSW 2655	RES	NCA08	35	41	6	Clearly Audible
55 URANA ST, THE ROCK NSW 2655	RES	NCA08	35	41	6	Clearly Audible
53 URANA ST, THE ROCK NSW 2655	RES	NCA08	35	41	6	Clearly Audible
58 URANA ST, THE ROCK NSW 2655	RES	NCA08	35	41	6	Clearly Audible
15 MIXNER ST, THE ROCK NSW 2655	RES	NCA08	35	41	6	Clearly Audible
77 WILSON ST, THE ROCK NSW 2655	RES	NCA08	35	41	6	Clearly Audible
67 WILSON ST, THE ROCK NSW 2655	RES	NCA08	35	41	6	Clearly Audible
63 WILSON ST, THE ROCK NSW 2655	RES	NCA08	35	41	6	Clearly Audible
6 QUEEN ST, THE ROCK NSW 2655	RES	NCA08	35	41	6	Clearly Audible
25 MIXNER ST, THE ROCK NSW 2655	RES	NCA08	35	41	6	Clearly Audible
LOT 84 OLD TRUNK ROAD, THE ROCK NSW 2655-	RES	NCA08	35	41	6	Clearly Audible
46 Nicholas St, The Rock NSW 2655	RES	NCA08	35	41	6	Clearly Audible
6 YERONG ST, THE ROCK NSW 2655	RES	NCA08	35	40	5	Noticeable

Results by Receiver

Address	Land Use	Noise Catchment Area	Construction Noise Management Level, dBA	Predicted Noise Level, dBA	Predicted Noise Level Above Noise Management Level, dB	Noise Category
20 NICHOLAS ST, THE ROCK NSW 2655	RES	NCA08	35	40	5	Noticeable
4 NICHOLAS ST, THE ROCK NSW 2655	RES	NCA08	35	40	5	Noticeable
45 KING ST, THE ROCK NSW 2655	RES	NCA08	35	40	5	Noticeable
31 KING ST, THE ROCK NSW 2655	RES	NCA08	35	40	5	Noticeable
48 KING ST, THE ROCK NSW 2655	RES	NCA08	35	40	5	Noticeable
46 KING ST, THE ROCK NSW 2655	RES	NCA08	35	40	5	Noticeable
44 KING ST, THE ROCK NSW 2655	RES	NCA08	35	40	5	Noticeable
69 URANA ST, THE ROCK NSW 2655	RES	NCA08	35	40	5	Noticeable
41 URANA ST, THE ROCK NSW 2655	RES	NCA08	35	40	5	Noticeable
37 URANA ST, THE ROCK NSW 2655	RES	NCA08	35	40	5	Noticeable
59 WILSON ST, THE ROCK NSW 2655	RES	NCA08	35	40	5	Noticeable
55 WILSON ST, THE ROCK NSW 2655	RES	NCA08	35	40	5	Noticeable
51 WILSON ST, THE ROCK NSW 2655	RES	NCA08	35	40	5	Noticeable
JENWAY 33 THE ROCK-COLLINGULLIE ROAD, THE ROCK NSW 2655	RES	NCA08	35	40	5	Noticeable
65 OLD TRUNK RD, THE ROCK NSW 2655	RES	NCA08	35	40	5	Noticeable
2A HILL ST, THE ROCK NSW 2655	RES	NCA08	35	39	4	Noticeable

Results by Receiver

Address	Land Use	Noise Catchment Area	Construction Noise Management Level, dBA	Predicted Noise Level, dBA	Predicted Noise Level Above Noise Management Level, dB	Noise Category
16 BRAITHWAITES LANE, THE ROCK NSW 2655	RES	NCA08	35	39	4	Noticeable
3 NICHOLAS ST, THE ROCK NSW 2655	RES	NCA08	35	39	4	Noticeable
22 NICHOLAS ST, THE ROCK NSW 2655	RES	NCA08	35	39	4	Noticeable
3 BRETTON ST, THE ROCK NSW 2655	RES	NCA08	35	39	4	Noticeable
43 KING ST, THE ROCK NSW 2655	RES	NCA08	35	39	4	Noticeable
40 KING ST, THE ROCK NSW 2655	RES	NCA08	35	39	4	Noticeable
45 URANA ST, THE ROCK NSW 2655	RES	NCA08	35	39	4	Noticeable
36 URANA ST, THE ROCK NSW 2655	RES	NCA08	35	39	4	Noticeable
63 WILSON ST, THE ROCK NSW 2655	RES	NCA08	35	39	4	Noticeable
36 URANA ST, THE ROCK NSW 2655	RES	NCA08	35	39	4	Noticeable
29 CHAPLIN LANE, THE ROCK NSW 2655	RES	NCA08	35	39	4	Noticeable
97 OLD TRUNK RD, THE ROCK NSW 2655	RES	NCA08	35	39	4	Noticeable
CARRINGTON 71 THE ROCK-COLLINGULLIE ROAD, THE ROCK NSW 2655	RES	NCA08	35	39	4	Noticeable
1 Nicholas St, The Rock NSW 2655	RES	NCA08	35	39	4	Noticeable
Lot 1, Plan 1/597816, The Rock, NSW 2655	RES	NCA08	35	38	3	Noticeable

Results by Receiver

Address	Land Use	Noise Catchment Area	Construction Noise Management Level, dBA	Predicted Noise Level, dBA	Predicted Noise Level Above Noise Management Level, dB	Noise Category
2 HILL ST, THE ROCK NSW 2655	RES	NCA08	35	38	3	Noticeable
Lot 99, Plan 99/754543, The Rock, NSW 2655	RES	NCA08	35	38	3	Noticeable
16 NICHOLAS ST, THE ROCK NSW 2655	RES	NCA08	35	38	3	Noticeable
10 NICHOLAS ST, THE ROCK NSW 2655	RES	NCA08	35	38	3	Noticeable
35 KING ST, THE ROCK NSW 2655	RES	NCA08	35	38	3	Noticeable
27 KING ST, THE ROCK NSW 2655	RES	NCA08	35	38	3	Noticeable
38 KING ST, THE ROCK NSW 2655	RES	NCA08	35	38	3	Noticeable
36 KING ST, THE ROCK NSW 2655	RES	NCA08	35	38	3	Noticeable
38A KING ST, THE ROCK NSW 2655	RES	NCA08	35	38	3	Noticeable
67 URANA ST, THE ROCK NSW 2655	RES	NCA08	35	38	3	Noticeable
39 URANA ST, THE ROCK NSW 2655	RES	NCA08	35	38	3	Noticeable
19 URANA ST, THE ROCK NSW 2655	RES	NCA08	35	38	3	Noticeable
15 URANA ST, THE ROCK NSW 2655	RES	NCA08	35	38	3	Noticeable
32 URANA ST, THE ROCK NSW 2655	RES	NCA08	35	38	3	Noticeable
28 URANA ST, THE ROCK NSW 2655	RES	NCA08	35	38	3	Noticeable
21 WILSON ST, THE ROCK NSW 2655	RES	NCA08	35	38	3	Noticeable
24 YERONG ST, THE ROCK NSW 2655	RES	NCA08	35	38	3	Noticeable

Results by Receiver

Address	Land Use	Noise Catchment Area	Construction Noise Management Level, dBA	Predicted Noise Level, dBA	Predicted Noise Level Above Noise Management Level, dB	Noise Category
26 YERONG ST, THE ROCK NSW 2655	RES	NCA08	35	38	3	Noticeable
27 MIXNER ST, THE ROCK NSW 2655	RES	NCA08	35	38	3	Noticeable
28 YERONG ST, THE ROCK NSW 2655	RES	NCA08	35	38	3	Noticeable
MAYFAIR 40 CHAPLIN LANE, THE ROCK NSW 2655	RES	NCA08	35	38	3	Noticeable
Lot 67, Plan 67/754555, The Rock, NSW 2655	RES	NCA08	35	38	3	Noticeable
93 LAGETTIE LANE, THE ROCK NSW 2655	RES	NCA08	35	38	3	Noticeable
3 RAILWAY ST, THE ROCK NSW 2655	RES	NCA08	35	37	2	Noticeable
23 KING ST, THE ROCK NSW 2655	RES	NCA08	35	37	2	Noticeable
3 KING ST, THE ROCK NSW 2655	RES	NCA08	35	37	2	Noticeable
28 KING ST, THE ROCK NSW 2655	RES	NCA08	35	37	2	Noticeable
26 KING ST, THE ROCK NSW 2655	RES	NCA08	35	37	2	Noticeable
22 KING ST, THE ROCK NSW 2655	RES	NCA08	35	37	2	Noticeable
16 URANA ST, THE ROCK NSW 2655	RES	NCA08	35	37	2	Noticeable
25 WILSON ST, THE ROCK NSW 2655	RES	NCA08	35	37	2	Noticeable
25 BRETTON ST, THE ROCK NSW 2655	RES	NCA08	35	37	2	Noticeable

Results by Receiver

Address	Land Use	Noise Catchment Area	Construction Noise Management Level, dBA	Predicted Noise Level, dBA	Predicted Noise Level Above Noise Management Level, dB	Noise Category
34 WILSON ST, THE ROCK NSW 2655	RES	NCA08	35	37	2	Noticeable
32 WILSON ST, THE ROCK NSW 2655	RES	NCA08	35	37	2	Noticeable
28 WILSON ST, THE ROCK NSW 2655	RES	NCA08	35	37	2	Noticeable
22 WILSON ST, THE ROCK NSW 2655	RES	NCA08	35	37	2	Noticeable
28 YERONG ST, THE ROCK NSW 2655	RES	NCA08	35	37	2	Noticeable
21 PIPER ST, THE ROCK NSW 2655	RES	NCA08	35	37	2	Noticeable
1 Piper St, The Rock NSW 2655	RES	NCA08	35	37	2	Noticeable
Lot 67, Plan 67/754555, The Rock, NSW 2655	RES	NCA08	35	37	2	Noticeable
29-31 Urana St, The Rock NSW 2655	RES	NCA08	35	37	2	Noticeable
24 Urana St, The Rock NSW 2655	RES	NCA08	35	37	2	Noticeable
29 Piper St, The Rock NSW 2655	RES	NCA08	35	37	2	Noticeable
37 KING ST, THE ROCK NSW 2655	RES	NCA08	35	36	1	Noticeable
19 KING ST, THE ROCK NSW 2655	RES	NCA08	35	36	1	Noticeable
15 KING ST, THE ROCK NSW 2655	RES	NCA08	35	36	1	Noticeable
18 KING ST, THE ROCK NSW 2655	RES	NCA08	35	36	1	Noticeable
51 URANA ST, THE ROCK NSW 2655	RES	NCA08	35	36	1	Noticeable
11 URANA ST, THE ROCK NSW 2655	RES	NCA08	35	36	1	Noticeable

Results by Receiver

Address	Land Use	Noise Catchment Area	Construction Noise Management Level, dBA	Predicted Noise Level, dBA	Predicted Noise Level Above Noise Management Level, dB	Noise Category
3 URANA ST, THE ROCK NSW 2655	RES	NCA08	35	36	1	Noticeable
20 URANA ST, THE ROCK NSW 2655	RES	NCA08	35	36	1	Noticeable
27 BRETTON ST, THE ROCK NSW 2655	RES	NCA08	35	36	1	Noticeable
25 PIPER ST, THE ROCK NSW 2655	RES	NCA08	35	36	1	Noticeable
Lot 1, Plan 1/1266277, The Rock, NSW 2655	RES	NCA08	35	36	1	Noticeable

Recommended Mitigation Measures

This assessment has been conducted with regard to the relevant CNVIS and CNVMP. To manage noise and vibration impacts, project specific mitigation measures may be considered such as reviewing construction staging methodology to identify opportunities to schedule intensive works during less sensitive time periods and by providing a clear process for community engagement and complaints. Likewise, the requirements and actionable items within the overarching CNVIS and CNVMP should be considered and adopted where appropriate. Following the consideration of project specific noise mitigation measures, additional noise mitigation measures to be explored are described in the Inland Rail NSW Construction Noise and Vibration Framework (CNVF) and summarised below.

Airborne Noise - Additional Mitigation Measures Matrix				
Time Period	Exceedance of NML	Perception	Duration	Communication Category/Management Measure
OOHW Daytime Period Sunday 7am - 6pm (including public holidays)	<5	Noticeable	Any	CO1
	5 - 15	Clearly audible	Any	CO1
	16 - 25	Moderately intrusive	Any	CO1, CO2
	>25	Highly intrusive	Any	CO1, CO2
OOHW Evening Period Monday - Sunday 6pm - 10pm (including public holidays)	<5	Noticeable	Any	CO1
	5 - 15	Clearly audible	Any	CO1
	16 - 25	Moderately intrusive	Any	CO1, CO2
	>25	Highly intrusive	Any >2 consecutive rest periods	CO1, CO2
OOHW Night Period Monday - Sunday 10pm - 7am (including public holidays)	<5	Noticeable	Any	CO1
	5 - 15	Clearly audible	Any	CO1
	16 - 25	Moderately intrusive	Any	CO1, CO2
			>2 consecutive sleep periods	CO1, CO2, RO, AO
			Any	CO1, CO2, RO
	>25	Highly intrusive	>2 consecutive sleep periods	CO1, CO2, RO, AO, AltA

Vibration - Additional Mitigation Measures Matrix

Time Period	Duration	Exceedance of 'preferred' value	Exceedance of 'maximum' value
OOHW Daytime Period Sunday 8am-6pm	Any	CO1, CO2	CO1, CO2, RO
OOHW Evening Period Mon-Sun 6pm-10pm	Any	CO1, CO2	CO1, CO2, RO
OOHW Night Period Mon-Sat 10pm-7am Sun 10pm-8am	Any	CO1, CO2, RO	CO1, CO2, RO, AltA

Additional Mitigation Measures

Measure	Abbreviation
Communication (Category 1) ¹	CO1
Communication (Category 2) ²	CO2
Respite Offer ³	RO
Alternative Accommodation	AltA
Agreement with Owners	AO

Note 1: CO1: Communication to provide information on the OOHW via methods such as letter box drop, email, newsletter, media advertisements and/ or website prior to the works commencing.

Note 2: CO2: Communication should be personalised (e.g. door knock, meeting, telephone call). Contact with these residents should commence early to enable feedback to be considered by the proposal.

Note 3: RO are not applicable to non-residential receivers. RO may comprise of pre-purchased movie tickets, dinner vouchers or similar. RO can also be provided by limiting high noise generating works and allowing at least a one-hour respite period between blocks of work. Where possible, the timing of this respite should be discussed with the impacted community.

Receiver Types

Code	Description	Code	Description
RES	Residential	OED	Other Educational
COM	Commercial	OHO	Other Hotel
IND	Industrial	OLI	Other Library
OOA	Other Outdoor Active Recreation	OME	Other Medical
OOP	Other Outdoor Passive Recreation	OPW	Other Place of Worship
OCC	Other Child Care	OPB	Other Public Building



MARTINUS 

Head Office | 1/23-27 Waratah Street | KIRRAWEE NSW 2232