



# Illabo to Stockinbingal Community Consultative Committee

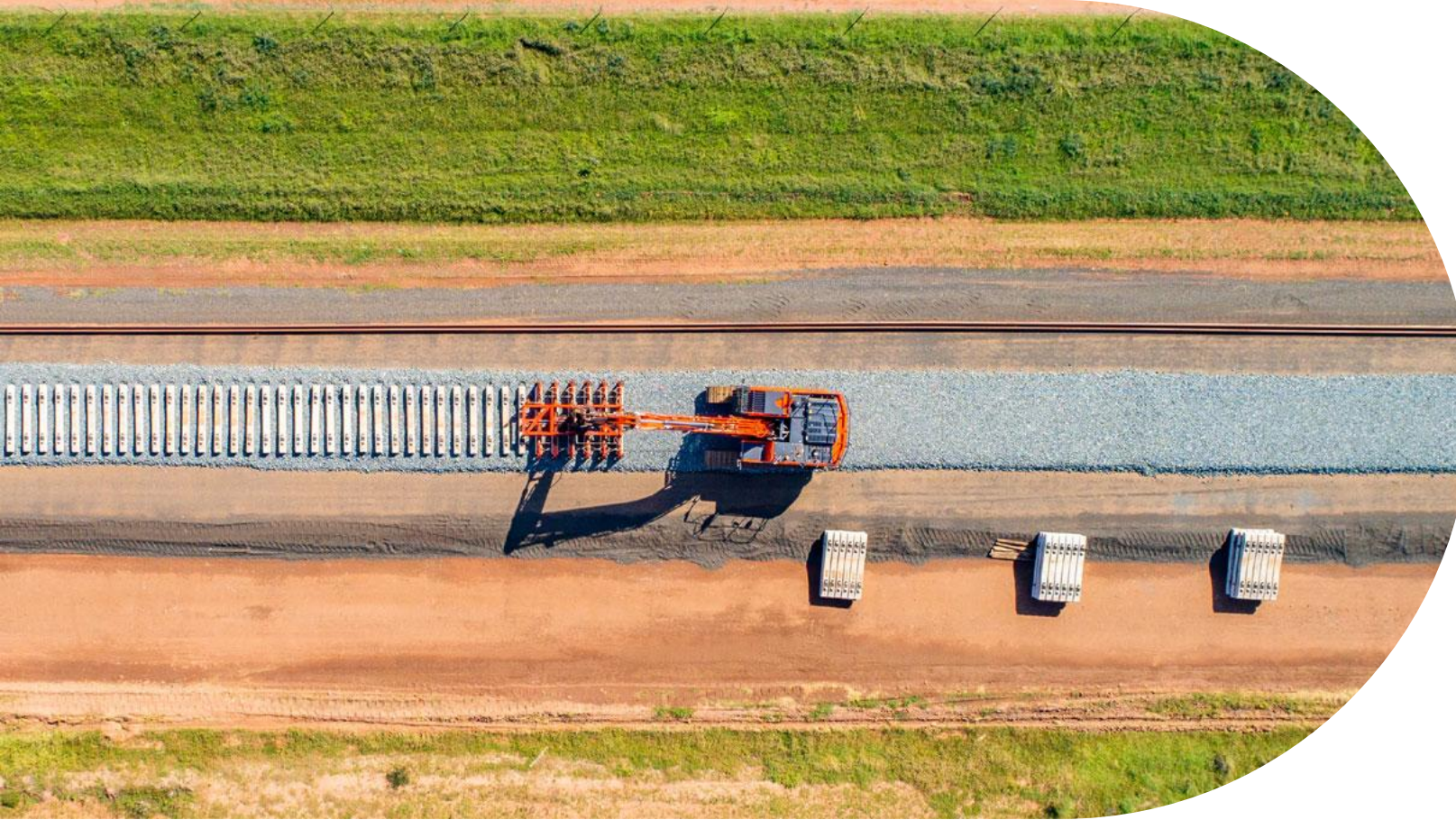
Stockinbingal

6 November 2025

# Acknowledgement of Country

Inland Rail acknowledges the Traditional Custodians of the land on which we meet today, and pay our respects to their Elders past and present. We extend that respect to Aboriginal and Torres Strait Islander peoples here today.

**INLAND  
RAIL** 



# Conflicts of interest

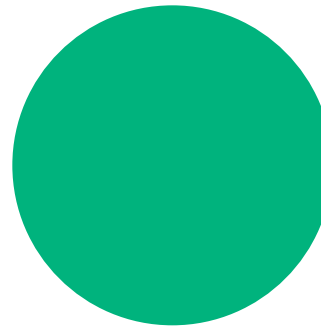
Garry West – Chair CCC

**INLAND  
RAIL** 



# Agenda

1. Actions from Previous Meeting
2. Program overview
3. Project Update
4. Planning and Environmental Update
5. Community Update
6. Community Feedback Discussion
7. Adjacent Projects Update
8. General Business



# Actions from previous meeting (07 Aug 25)

Item	Action/response	Date Completed
Who holds responsibility for liability in relation to private rail underpasses	<p><b>Action: Conrad Strachan</b> Liabilities are primarily outlined in the 'level crossing and/or underpass corridor access agreement' specific clauses, but generally, the external party is responsible for liabilities arising from all their activities, while the rail operator is liable for operational failures.</p>	06/11/2025
Water tank availability for firefighting at the Workforce Accommodation Camp?	<p><b>Action: Conrad Strachan</b> Access to water is available at the Workforce Accommodation Camp (WAC) for firefighting purposes.</p> <p><b>Access for Fire Appliances</b> Figure 5- 2 of the Bushfire Emergency Plan (BEP) shows water access locations and road access to detention basin for firefighting vehicles. Fill up points for fire appliances are also included in the BEP.</p> <p><b>Fittings</b> RFS requested fittings for tank access and the BEP notes that tanks will have appropriate fittings for firefighting use (section 5.4 and the consultation responses within the BEP).</p>	06/11/2025
Details of heritage items salvaged at recent test pits	<p><b>Action: Rachael Labruyere</b> Refer to Environmental update slides</p>	06/11/25
Circulate flood relevant sections of the EIS, RtS and Determination	<p><b>Action: Garry West</b></p>	Eleanor Falkiner sent 17 October 2025
Hold community information session in Stockinbingal regarding flooding	<p><b>Action: Eleanor Falkiner</b></p>	September 2025 - deferred (update provided to CCC members October 2025)

# Introduction/Presenters

**Conrad Strachan**

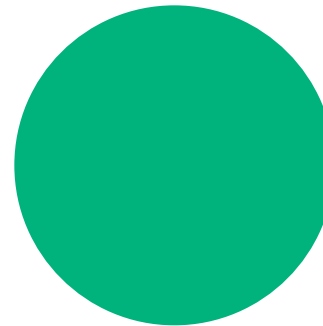
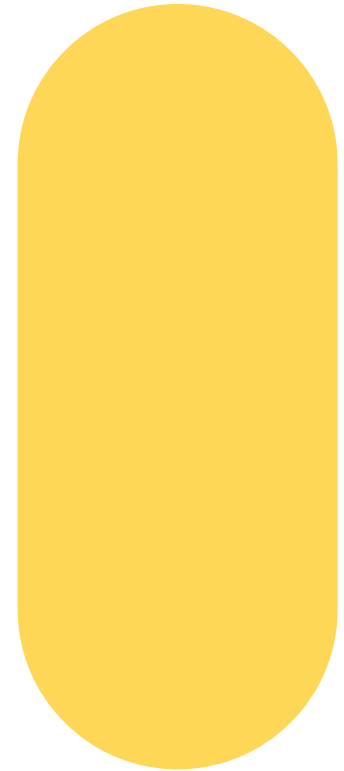
Project Director – I2S

**Rachael Labruyere**

Environmental Manager – A2P

**Eleanor Falkiner**

Stakeholder Engagement Lead - I2S





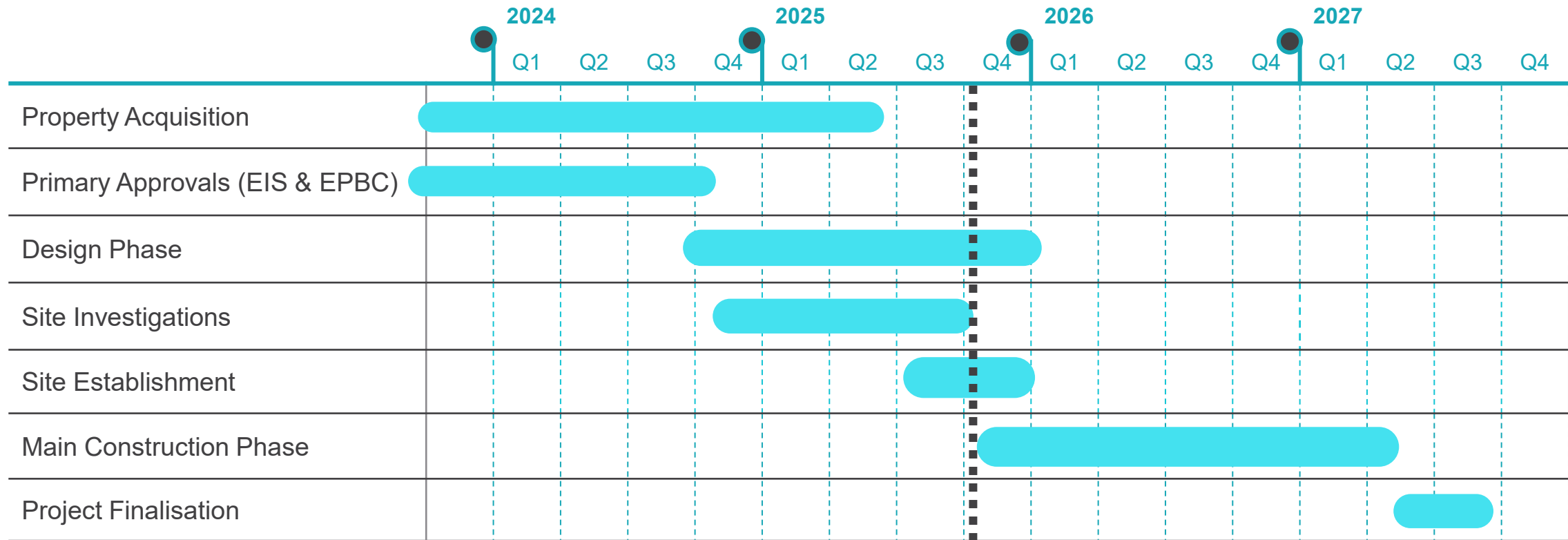
# Project Update

Conrad Strachan – Project Director I2S

**INLAND  
RAIL** 



# Illabo to Stockinbingal Program



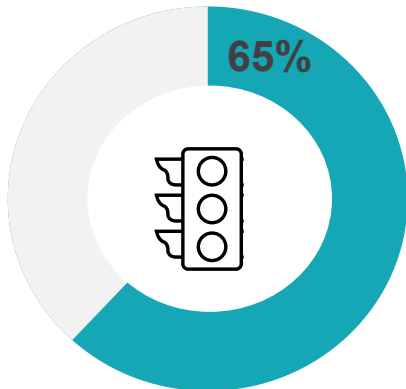
# I2S Design Progress

John Holland  
Design  
& Construct  
Contract

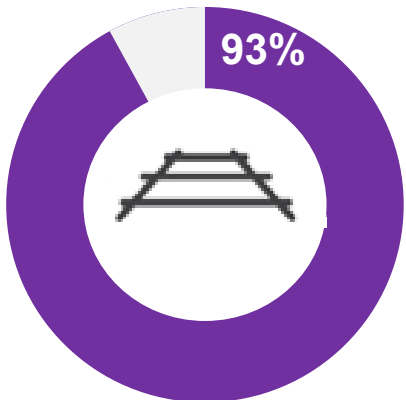
All Design



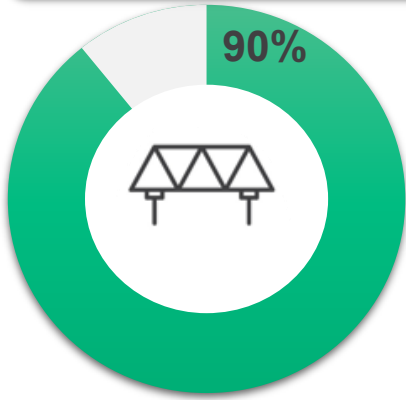
Signalling



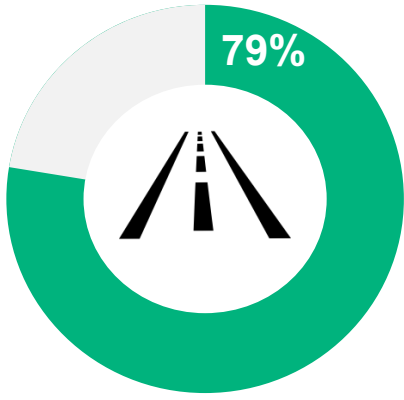
Track & Formation



Bridges



Roadworks



# Three Month Lookahead

- Fencing the rail corridor is continuing
- Establishing site compounds along the alignment continuing
- Clearing and grubbing of alignment
- Utilities adjustment
- Major construction is due to commence in Q4 2025 pending further approvals



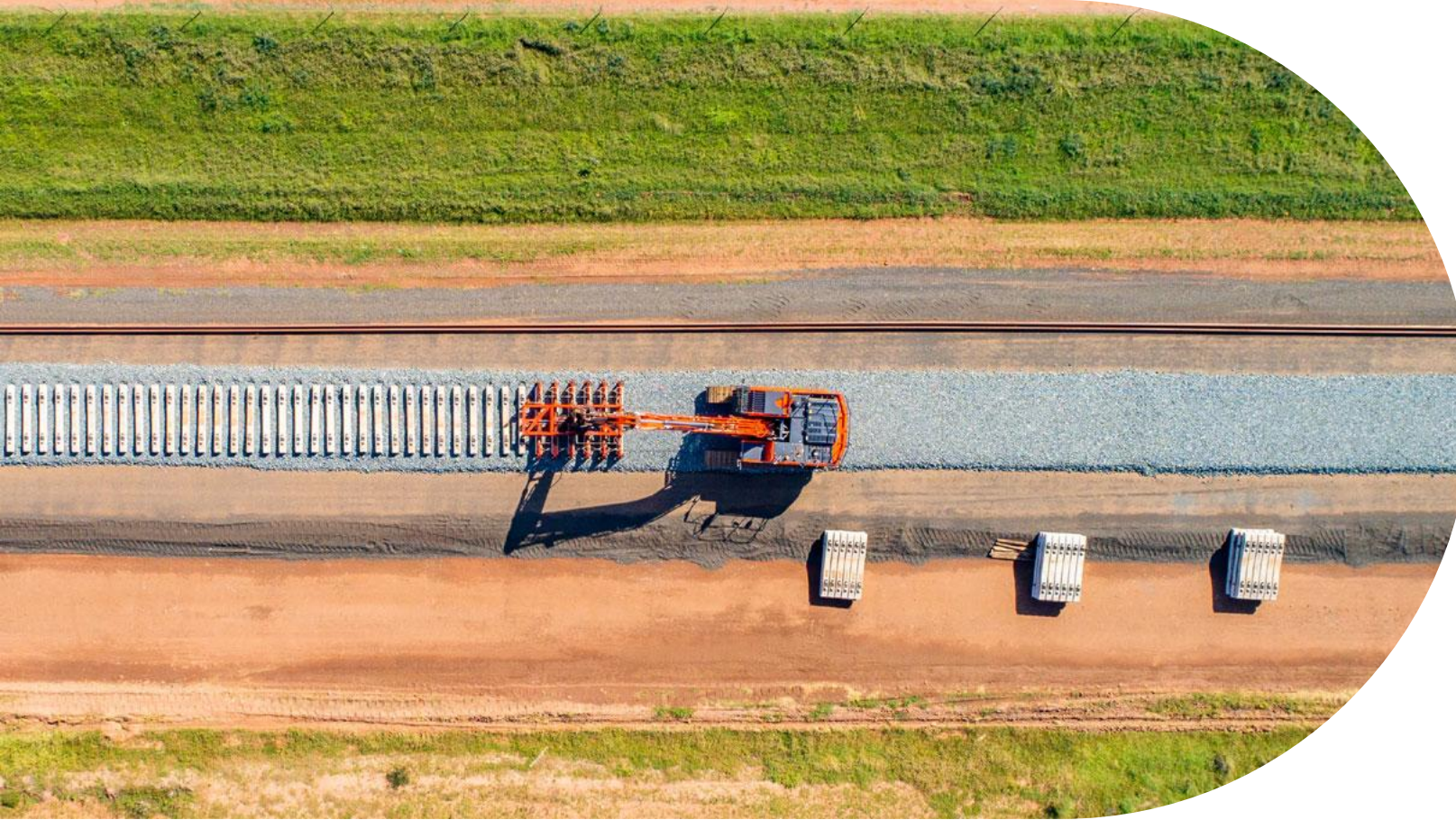
# Construction



# Workforce Accommodation Camp

- Works are progressing well, the camp kitchen, laundry and the first 100 beds are installed and in operation.
- The facility was operational for the workforce from the start of September in time for the possession.
- At peak, the camp will accommodate 350 workers and is managed by an independent contractor.
- The facility is designed to minimise social and environmental impacts on the region.





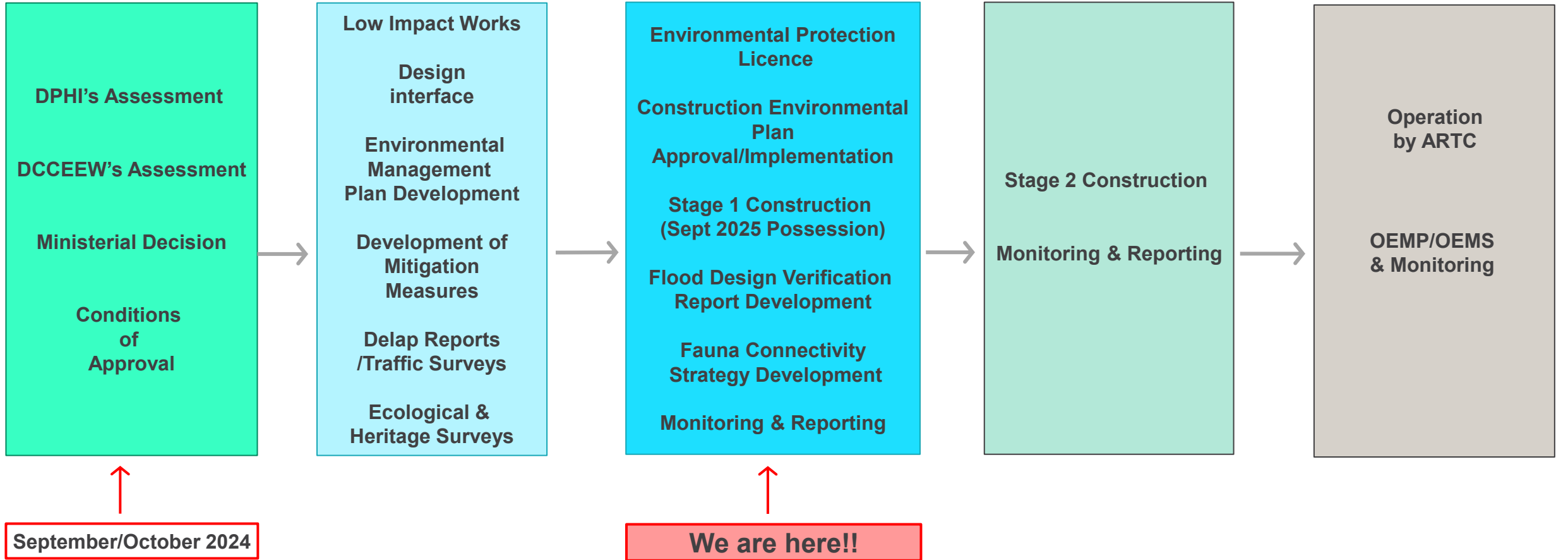
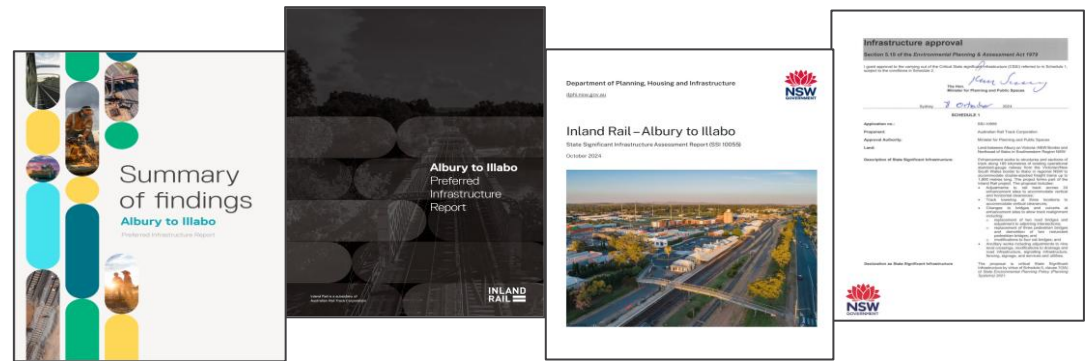
# Planning and Environment

Rachael Labruyere

**INLAND  
RAIL** 



# Approvals and Construction



# Heritage /Salvage Works



Survey and Test pitting completed in Zones 5,6,9 and 10.

10 areas of potential archaeological deposits were identified

IR-IF-01 – Single quartz flake located along the fence line within Zone 5 towards the northern end of the zone. The isolated find is located on the northern side of the creek line.

IR-IF-02 – Broken hammer stone/anvil located along the fence line within Zone 9 approximately 9m west of Dudauman Road.

IR-IF-03 – Single basal edge ground axe located within within Zone 6, 1.6km north Dirnaseer Road.



# Flood Design Verification Report (FDVR)

## Flood Risk Analysis

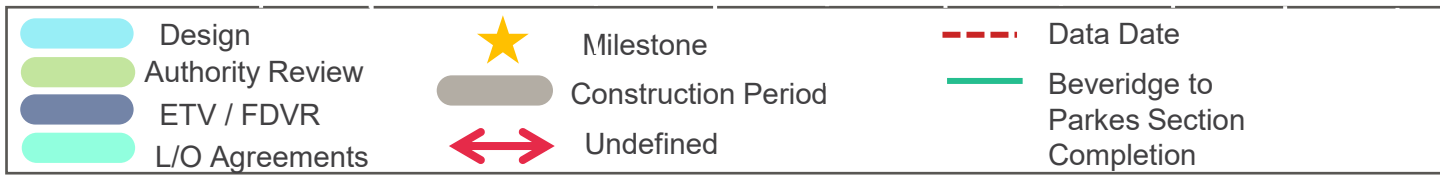
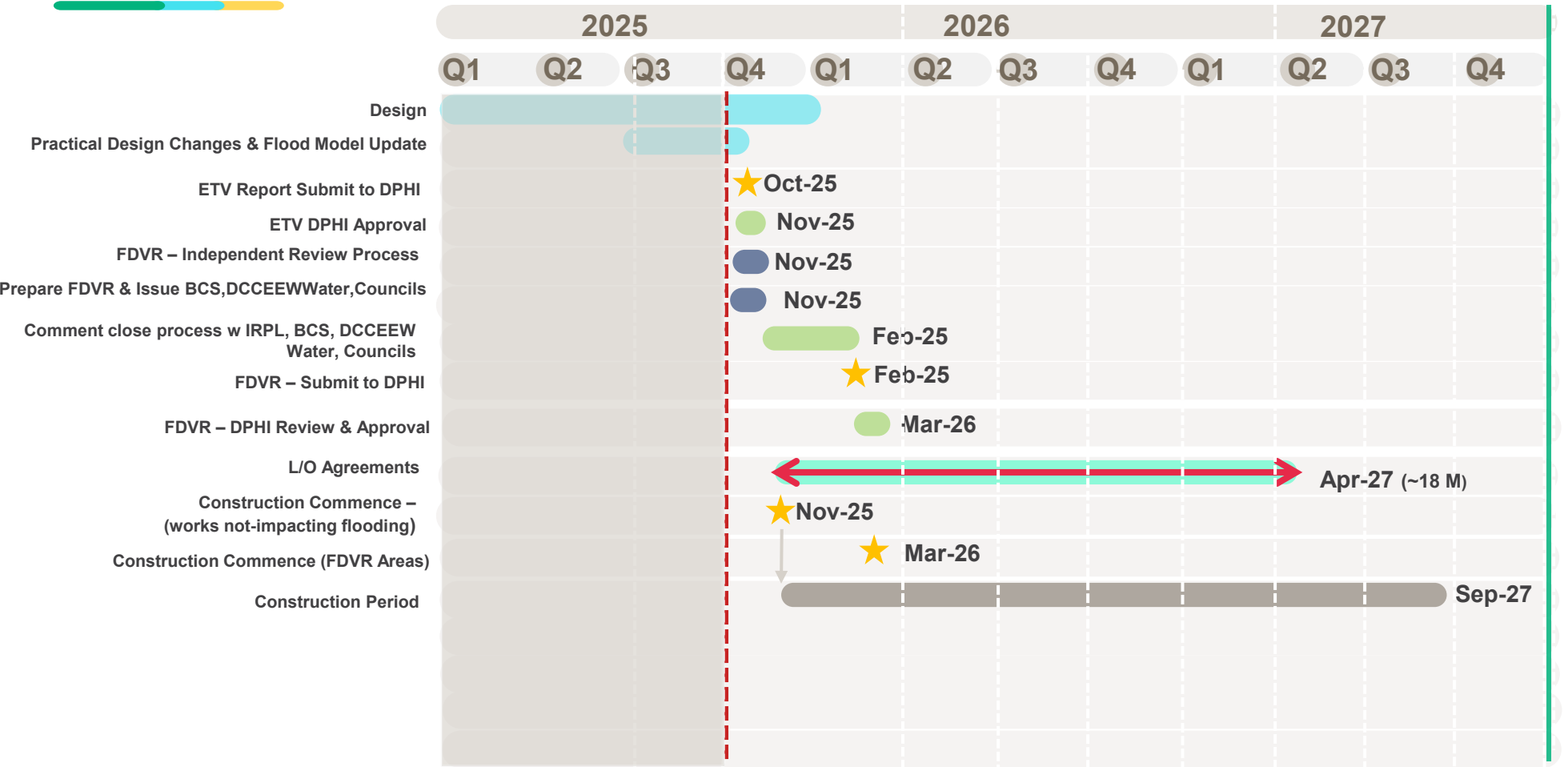
- Draft **Flood Design Verification Report (FDVR)**.
- Locations of predicted **Quantitative Design Limit (QDL)** exceedances have been identified.
- Critical design analysis undertaken and challenge to mitigate QDL exceedances i.e. culvert type, size and increased allocation.
- FDVR updated to reflect outcomes of design review.
- FDVR issued for internal review and comment.

## Flood Design Consultation Protocol

- Undergoing internal review with IRPL

Next steps- provision of FDVR to agencies and landowner consultation.

# Flood Design Verification Report





# Community Update

Eleanor Falkiner – Stakeholder Engagement Lead I2S



# Engagement Overview Aug - Oct 2025

	ACTIVITY
August	Stockinbingal and Illabo community drop-in session
	Meet the Contractor workshops – Young and Cootamundra
September	CGRC Councillor visit to Stockinbingal camp accommodation
	Stockinbingal and Illabo community drop in sessions
October	Illabo and Cootamundra Show
	Community Information Centre opened in Cootamundra



Above: Inland Rail stall at Illabo Show

# John Holland Group Information Centre in Cootamundra

The **Project Information Centre** is now open on **Murray Street, Cootamundra**, providing a space for community members to learn more about the project and ask questions.

Located next to the main JHG Cootamundra office in the former Holden dealership on Wallendoon Street.



# Inland Rail Skills Academy

2019 – September 2025 Junee LGA



**INLAND RAIL**

We invest in Inland Rail alignment communities by partnering with experts to grow a local supply of businesses and future workers equipped for the 21<sup>st</sup> century.



## STEM PARTNERSHIPS

**5** Events held

**7** Schools involved

**306**

Students engaged in STEM activities

**13%** of whom are First Nations People

**53%** of whom are Female

**42** Teachers attended



## UPSKILLING LOCAL BUSINESSES

**1** Supplier Capability Workshops held

**0** Mentoring sessions held

**10** Businesses upskilled to work on a major project

**2%** First Nations businesses

**1** "Meet the Contractor" events held

**44** Businesses attending



## SKILLS TRAINING

**0** Work ready individuals

**0** Completed Training Competencies

**0** of whom are First Nations People

**0** of whom are Female

**2** Workers received training on project

**0** Apprentices/ Trainees engaged



## COMMUNITY GRANTS

**16** Local community grants approved

**\$55K**  
Cash contributions



## PROJECT WORKFORCE

**8** Total workforce from LGA

**2** Sustainable Jobs

**0** Workers in trades

**0** First Nations workers

**0** Female workers

**1** Young Workers (Under 25)



## PROJECT PROCUREMENT

**3**

Businesses who have worked on the project

**0** First Nations Businesses

**\$26K**

Total spend on local businesses

# Inland Rail Skills Academy

2019 – September 2025 Cootamundra – Gundagai Shire LGA



**INLAND RAIL**

We invest in Inland Rail alignment communities by partnering with experts to grow a local supply of businesses and future workers equipped for the 21<sup>st</sup> century.



## STEM PARTNERSHIPS

**3** Events held

**3** Schools involved

**274**

Students engaged in STEM activities

**15%** of whom are First Nations People

**47%** of whom are Female

**23** Teachers attended



## UPSKILLING LOCAL BUSINESSES

**1** Supplier Capability Workshops held

**0** Mentoring sessions held

**18** Businesses upskilled to work on a major project

**50%** First Nations businesses

**3** "Meet the Contractor" events held

**198** Businesses attending



## SKILLS TRAINING

**41** Work ready individuals

**3** Completed Training Competencies

**12** of whom are First Nations People

of whom are Female **8**

**0** Workers received training on project

**0** Apprentices/ Trainees engaged



## COMMUNITY GRANTS

**13** Local community grants approved

**\$36 K**

Cash contributions



## PROJECT WORKFORCE

**9** Total workforce from LGA

**0** Sustainable Jobs

**0** Workers in trades

**1** First Nations workers

**4** Female workers

**2** Young Workers (Under 25)



## PROJECT PROCUREMENT

**9**

Businesses who have worked on the project

**0** First Nations Businesses

**\$ 1.1m**

Total spend on local businesses

# Social Performance

## What's been happening?

- *Meet the Contractor* events in Young and Cootamundra connected 58 businesses with the John Holland team.
- *Supplier Capability* workshops in Junee and Cootamundra supported 28 businesses.
- *University of Newcastle* delivered STEM shows to 274 students and 23 teachers across 3 I2S region schools.
- *Rail Readiness Training* in Young led to interviews for 6 participants—3 now employed on the project.

## Since our last update:

- Second round of *Supplier Capability* workshops held in Cootamundra and Junee in October.



# First Nations Update

- September 2025 – Wiradjuri Signage approved to name the I2S camp site buildings.
- Pathways to opportunities capability development program for businesses.
- October 2025 - Aboriginal Cultural Values Plan approved.



# Consultation Q4 2025 – Outlook

- Closing out design
- Utilities and property
- Hydrology and flooding
- Visual Landscape and Amenity
- Construction awareness and liaison
- School engagement activities
- JHG volunteering for local Meals on Wheels
- John Holland trade stall at Cootamundra Annual Christmas Carnival on 29/11



Above: John Holland and IRPL at Cootamundra Show



# Community Feedback

**INLAND  
RAIL** 



# Community Insights

- Community feedback / sentiment?
- Any gaps in information provided or project knowledge?
- Request for specific presentation 2026 CCC meetings



Above: John Holland Cootamundra Community Drop in Centre



# Program Update

Conrad Strachan – Project Director - I2S

**INLAND  
RAIL** 



# Adjacent Projects Update

## Albury to Illabo (A2I)

- Junee - Kemp St bridge demolished in the September possession, removal of bridge segments ongoing
- Wagga - Temporary closure of Edmondson St bridge to commence late November for the 2-week traffic trial
- Wagga – new school bus timetable and routes commencing mid-November
- Wagga – construction of temporary ramp at Mother’s footbridge in preparation for demolition of existing ramp
- Albury – demolition of Albury Station footbridge during December possession

## Stockinbingal to Parkes (S2P)

- Overhead wires investigations underway with relocations to commence in the new year





# General Business

Garry West – Chair CCC

**INLAND**  
**RAIL** 





# Conclusion and Confirmation of Actions

Garry West – Chair CCC





**Thank you**

**INLAND  
RAIL** 