



# Brookstead

## Investigating refinements to the revised reference design

The NSW/Qld Border to Gowrie section is in the environmental approvals stage.

Inland Rail is seeking approval from the Queensland Coordinator-General (Coordinator-General) for the NSW/Qld Border to Gowrie revised draft Environmental Impact Statement (EIS) and its revised reference design, which was on public consultation in mid-2025.

As a coordinated project, the NSW/Qld Border to Gowrie section also needs approval from the Australian Government under the *Environment Protection and Biodiversity Conservation Act 1999* (EPBC Act).

### We're investigating design refinements for Brookstead

Inland Rail is investigating the feasibility of design refinements at several locations along the NSW/Qld Border to Gowrie section, including at Brookstead.

These investigations are possible due to updates to our design standards since the revised reference design was finalised for assessment in 2023. The investigations also provide an opportunity for Inland Rail to further improve the design in response to community feedback.

The potential design refinements aim to reduce the amount of land required for the project, improve safety at road-rail interfaces and minimise impacts to the community, including noise, vibration, earthworks, truck movements and visual amenity.

The design refinements presented are indicative only and we are sharing these now to inform the community of the opportunities potentially available to refine the revised reference design.

### What happens next?

We'll report back to the community on potential design refinements once design investigations are complete.

After the Coordinator-General approves the revised draft EIS and revised reference design, any feasible design refinements adopted by Inland Rail must go through the Coordinator-General's project change process and, if required, the Australian Government's EPBC Act variation process.

### Coordinator-General's project change process

The Coordinator-General's project change and assessment process allows for consideration of project changes following Queensland Government approval.

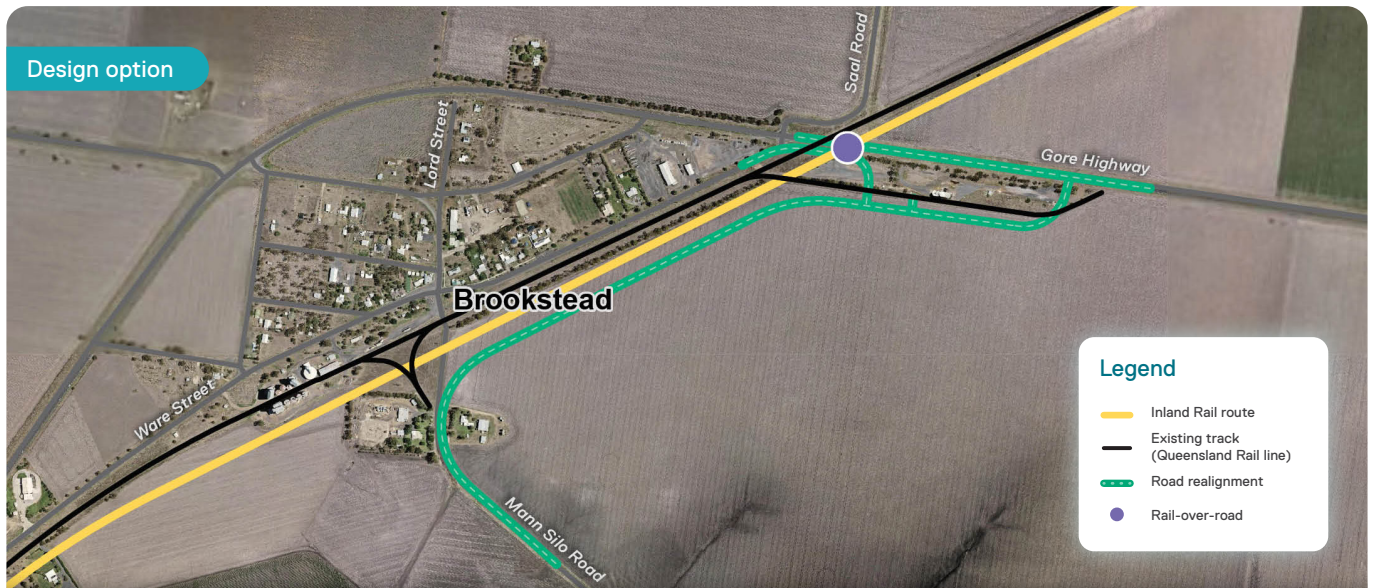
The project change process addresses potential environmental, social and economic impacts of any proposed change.

The Coordinator-General may require a public notification of the proposed changes.

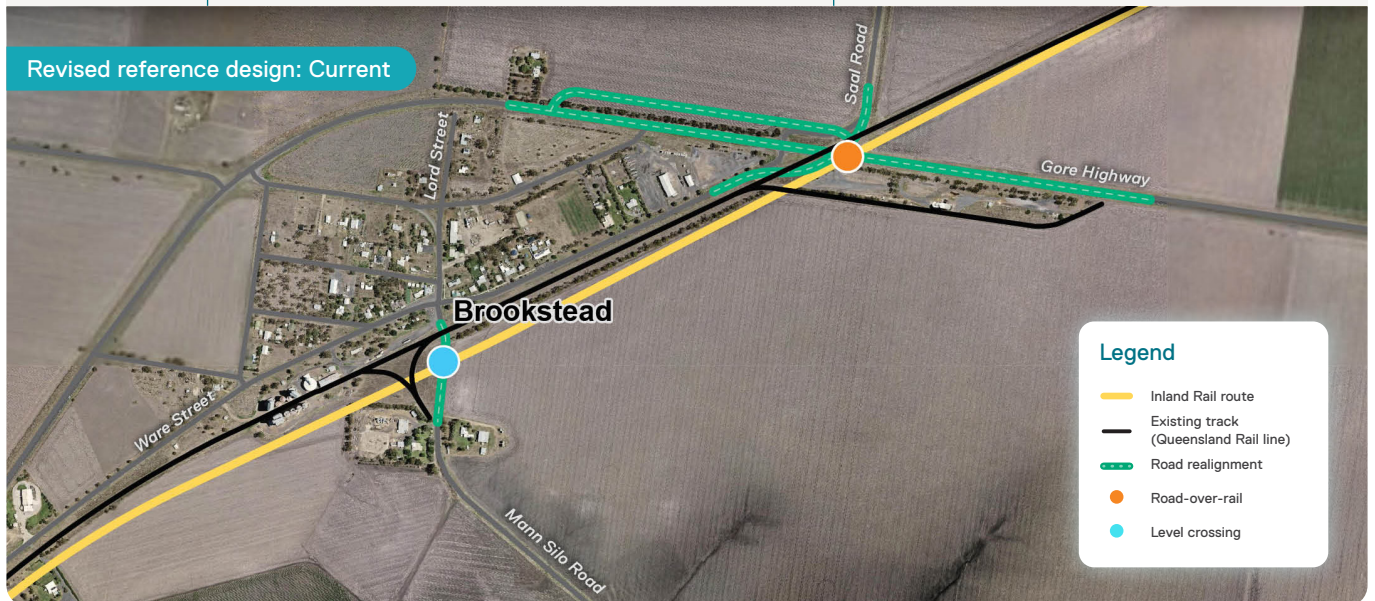
Read more about environmental impact assessments for coordinated projects at [www.coordinatorgeneral.qld.gov.au](http://www.coordinatorgeneral.qld.gov.au).

# Brookstead

Key design refinement investigations for Brookstead include a new rail-over-road bridge at the Gore Highway. This option removes the need for significant road realignment works, optimises connectivity for local roads and improves road safety.



Location	Design refinement investigation	Key benefits
Gore Highway and Mann Silo Road	<ul style="list-style-type: none"> <li>• New rail-over-road bridge at the Gore Highway</li> <li>• Realignment of Mann Silo Road for connectivity to Gore Highway and Ware Street</li> <li>• Removal of the active double level crossing on Mann Silo Road</li> <li>• Widening of Gore Highway to accommodate turning lanes</li> <li>• Realignment of Ware Street to connect to Mann Silo Road for access to Gore Highway.</li> </ul>	<ul style="list-style-type: none"> <li>• Maintains an eastern connection into Brookstead via Mann Silo Road and a new Ware Street connection</li> <li>• Significantly reduces Gore Highway road construction complexity and operational impacts with traffic control</li> <li>• Improves road safety and reduces level crossing noise (i.e. boom gate bells and train horn).</li> </ul>



## Find out more



We remain committed to working with the community to ensure the best outcome for the region and encourage you to get in touch with us, with questions big or small.

Call 1800 732 761 or email [inlandrailqld@inlandrail.com.au](mailto:inlandrailqld@inlandrail.com.au).



For project information or to subscribe to our newsletter, visit [inlandrail.com.au/b2g](http://inlandrail.com.au/b2g).

