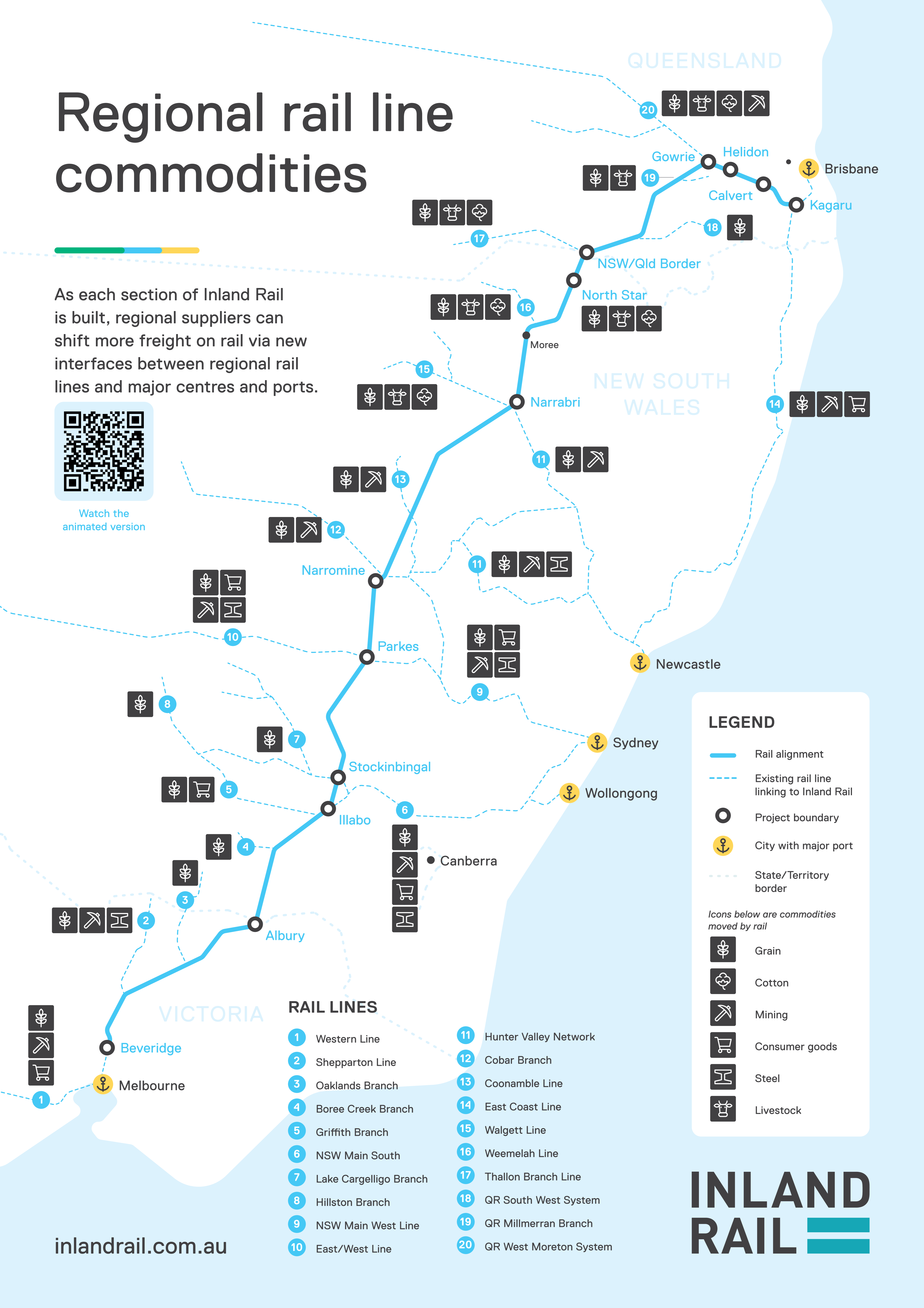


Regional rail line commodities

As each section of Inland Rail is built, regional suppliers can shift more freight on rail via new interfaces between regional rail lines and major centres and ports.



Watch the animated version



LEGEND

- Rail alignment
- Existing rail line linking to Inland Rail
- Project boundary
- City with major port
- State/Territory border

Icons below are commodities moved by rail

- Grain
- Cotton
- Mining
- Consumer goods
- Steel
- Livestock

RAIL LINES

- | | |
|--------------------------|---------------------------|
| 1 Western Line | 11 Hunter Valley Network |
| 2 Shepparton Line | 12 Cobar Branch |
| 3 Oaklands Branch | 13 Coonamble Line |
| 4 Boree Creek Branch | 14 East Coast Line |
| 5 Griffith Branch | 15 Walgett Line |
| 6 NSW Main South | 16 Weemelah Line |
| 7 Lake Cargelligo Branch | 17 Thallon Branch Line |
| 8 Hillston Branch | 18 QR South West System |
| 9 NSW Main West Line | 19 QR Millmerran Branch |
| 10 East/West Line | 20 QR West Moreton System |