



This document is uncontrolled
when printed.

MARTINUS RAIL



ALBURY YARD AND RIVERINA HIGHWAY – CONSTRUCTION NOISE AND VIBRATION IMPACT STATEMENT ADDENDUM

A2I | Albury to Illabo

CONTRACT NUMBER: 0052

PROJECT DOCUMENT NUMBER:

6-0052-210-EEC-B0-AS-0001_ADD

A2I | ALBURY TO ILLABO
ALBURY YARD & RIVERINA HIGHWAY – CONSTRUCTION NOISE AND VIBRATION IMPACT STATEMENT ADDENDUM

Document Control

DOCUMENT TITLE:	Albury Yard & Riverina Highway - Construction Noise and Vibration Impact Statement Addendum		
DOCUMENT OWNER:	Chris Standing – Environment, Approvals and Sustainability Manager (A2P)		
PREPARED BY:	Constance Georgiou <small>Signed by:</small>	TITLE:	Environmental Approvals Advisor
SIGNATURE:		DATE:	17/02/2026
REVIEWED BY:	Simon Fisher <small>79401839159A42C...</small>	TITLE:	Environment Lead (A2I)
SIGNATURE:	 <small>DocuSigned by:</small>	DATE:	17/02/2026

Approved by

NAME	TITLE	SIGNATURE	DATE
Chris Standing	Environment, Approvals and Sustainability Manager (A2P)	 <small>DocuSigned by:</small>	17/02/2026

Revision History

REVISION	REVISION DATE	AMENDMENT	DATE TO CLIENT
A	18/12/2025	For review	18/12/2025
B	6/02/2026	For review	6/02/2026
0	17/02/2026	For use	17/02/2026

Disclaimer: This document has been prepared by Martinus. Use of this document shall be subject to the terms of the relevant contract with Martinus. The electronic file of this current revision is the controlled copy. This file is stored on Martinus' server located at Head Office, Unit 1, 23-27 Waratah St, Kirrawee, NSW.

This document is the property of and contains proprietary information owned by Martinus. No permission is granted to publish, reproduce, transmit or disclose to another party, any information contained in this document, in whole or in part, without prior written permission from the issuing authority.

For the purpose of this document, Martinus refers to the Martinus Group of companies.

This document is uncontrolled when printed.

TABLE OF CONTENTS

GLOSSARY	4
1 INTRODUCTION.....	5
1.1 Purpose of this Addendum	5
2 NOISE ASSESSMENT	8
2.1 Site establishment (W.001A)	8
2.1.1 Scope	8
2.1.2 Assessment	8
2.1.3 Results.....	8
2.2 Pedestrian Bridge Works - Typical (W.016A)	9
2.2.1 Scope	9
2.2.2 Assessment	9
2.2.3 Results.....	9
3 VIBRATION ASSESSMENT.....	11
3.1 Site establishment (W.001A)	11
3.2 Pedestrian Bridge Works - Typical (W.016A)	11
4 CONCLUSION	12
4.1 Mitigation and management measures.....	12
4.2 Additional mitigation measures.....	12
APPENDICES	15
APPENDIX A	16
SLR Predict W.001A.....	16
APPENDIX B	17
SLR Predict W.016A.....	17

LIST OF TABLES

Table 1: Definitions	4
Table 2: Work scenario description.....	8
Table 3: Exceedances for W.001A	8
Table 4: Exceedances for W.016A	10

LIST OF FIGURES

Figure 1: Additional work area for W.001A (CNVIS Addendum).....	6
Figure 2: Work area for W.016A (CNVIS Addendum).....	7
Figure 3: Additional mitigation measures matrix – Noise	13
Figure 4: Additional mitigation measures matrix – Noise & Vibration.....	14

A2I | ALBURY TO ILLABO

ALBURY YARD & RIVERINA HIGHWAY – CONSTRUCTION NOISE AND VIBRATION IMPACT STATEMENT ADDENDUM

GLOSSARY

Specific terms and acronyms used throughout this plan are listed and described in Table 1 below.

TABLE 1: DEFINITIONS

TERM	DEFINITION
A2I	Albury to Illabo section of the Inland Rail project
Albury Yard	Albury Yard clearances enhancement site
Albury Yard & Riverina HWY CNVIS	Albury Yard and Riverina Highway Construction Noise and Vibration Impact Statement (Doc No. 6-0052-210-EEC-B0-AS-0001)
CA	Consistency Assessment
CNVIS	Construction Noise and Vibration Impact Statement
CNVIS Addendum	This document
Endorsed CNVIS	Albury Yard and Riverina Highway Construction Noise and Vibration Impact Statement (Doc No. 6-0052-210-EEC-B0-AS-0001)
EWP	Elevated work platform
km	Kilometres
m	Metres
NML	Noise Management Level
OOH	Out-of-hours
Project	Albury to Illabo project approved under section 5.19 of the EP&A Act on 8 October 2024, as modified on 13 August 2025
RBL	Rating Background Level
Riverina HWY	Riverina Highway enhancement site
SLR Predict	A2I noise and vibration management tool
T	Tonnes
W.001A	Work Scenario 1A – Site establishment for construction of alternative pedestrian access
W.016A	Work Scenario 16A – Additional area to support construction of concrete pedestrian access ramp to the bridge

1 INTRODUCTION

1.1 Purpose of this Addendum

This Construction Noise and Vibration Impact Statement Addendum (CNVIS Addendum) has been prepared to identify and assess the additional work scenario required to support and enable the wider scope of activities associated with the Albury Yard clearances enhancement site (Albury Yard), as shown in Figure 1 and Figure 2.

This Addendum will form part of the endorsed Construction Noise and Vibration Impact Statement (CNVIS) (Doc No: 6-0052-210-EEC-B0-AS-0001) for Albury Yard and Riverina HWY (endorsed CNVIS). This Addendum should be reviewed in conjunction with the endorsed CNVIS, including adopted Rating Background Levels (RBL), Noise Management Levels (NML) and assessment criteria in accordance with the Conditions of Approval (CoA) (SSI-10055).

A21 | ALBURY TO ILLABO
ALBURY YARD & RIVERINA HIGHWAY – CONSTRUCTION NOISE AND VIBRATION IMPACT STATEMENT ADDENDUM



FIGURE 1: ADDITIONAL WORK AREA FOR W.001A (CNVIS ADDENDUM)

A21 | ALBURY TO ILLABO
ALBURY YARD & RIVERINA HIGHWAY – CONSTRUCTION NOISE AND VIBRATION IMPACT STATEMENT ADDENDUM

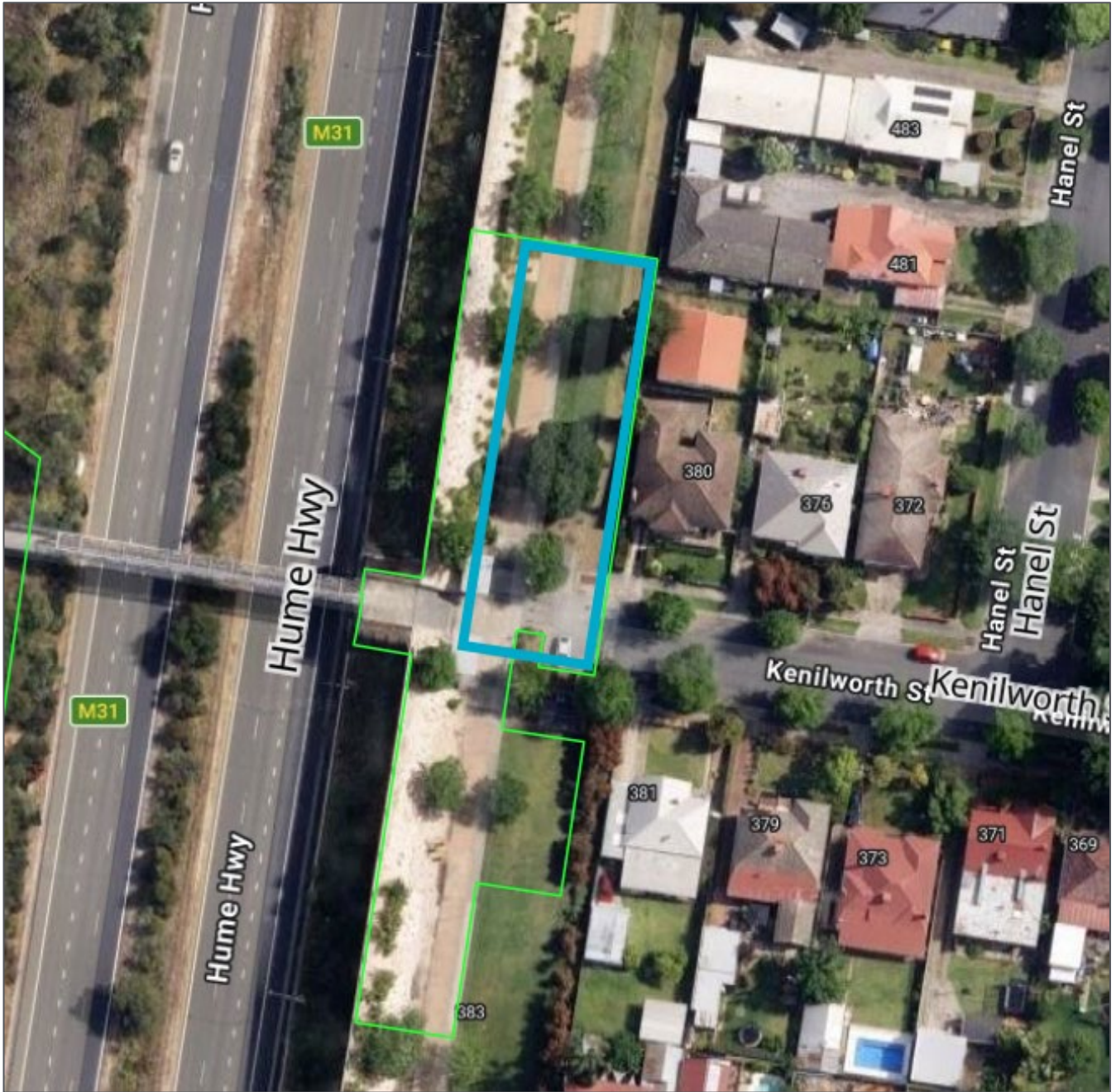


FIGURE 2: WORK AREA FOR W.016A (CNVIS ADDENDUM)

A2I | ALBURY TO ILLABO

ALBURY YARD & RIVERINA HIGHWAY – CONSTRUCTION NOISE AND VIBRATION IMPACT STATEMENT ADDENDUM

2 NOISE ASSESSMENT

The potential construction noise levels from the proposed work scenario has been predicted using SLR Predict, the A2I project-specific noise and vibration tool. This CNVIS Addendum assesses the work scenarios identified in Table 2.

TABLE 2: WORK SCENARIO DESCRIPTION

ID	Scenario	Description	Total Lw
W.001A	Site establishment	<ul style="list-style-type: none"> Facilitating alternative pedestrian access during construction 	115
W.016A	Pedestrian bridge work - Typical	<ul style="list-style-type: none"> Additional area required to support construction of the concrete pedestrian ramp 	111

2.1 Site establishment (W.001A)

2.1.1 Scope

The additional work area has been identified in the Albury Precinct Consistency Assessment, with this area required to support the wider scope associated at the Albury Yard clearances enhancement site and will enable the creation of an alternative pedestrian pathway during construction to maintain pedestrian connectivity. Considering the minor nature of the works, a revised version of work scenario W.001 has been developed to assess the works.

This CNVIS addendum has assessed the additional work area required, using SLR Predict, with the following noted:

Plant and equipment

- Hand tools (electric)
- Hand tools (power)
- Light vehicles
- Water cart

Construction hours

- Standard approved construction hours:
 - 7am to 6pm Monday to Friday, inclusive
 - 7am to 6pm Saturday.
- Daytime OOH:
 - 8am to 6pm Sunday and Public Holidays.

2.1.2 Assessment

As noted above, the additional work area has been assessed utilising SLR Predict. The plant and equipment list as noted above, has been considered at the same utilisation rate as per the endorsed CNVIS, within a 15-minute assessment period.

2.1.3 Results

The SLR Predict results are presented in Appendix B, for day-time OOH, as the most affected period.

Table 4 provides a summary of the exceedances identified through SLR Predict, with the following noted:

- W.001A exceedances identified in the SLR Predict results

TABLE 3: EXCEEDANCES FOR W.001A

ASSESSMENT RESULTS	NUMBER OF RESIDENTIAL RECEIVERS WITH NML EXCEEDANCE
	SLR Predict – W.001A (additional work area)
Total Lw (dBA)	115

A21 | ALBURY TO ILLABO**ALBURY YARD & RIVERINA HIGHWAY – CONSTRUCTION NOISE AND VIBRATION IMPACT STATEMENT ADDENDUM**

ASSESSMENT RESULTS	NUMBER OF RESIDENTIAL RECEIVERS WITH NML EXCEEDANCE
	SLR Predict – W.001A (additional work area)
Noticeable (1-5 dB)	2
Clearly Audible (6-15 dB)	16
Moderately Intrusive (16-25 dB)	10
Highly Intrusive (>25 dB)	2

There is a limitation in allowing a comparison of the results with other work scenarios in the endorsed CNVIS due to a significant difference in location, plant and equipment. The additional work area for W.001A has been considered and assessed on its own.

There is the potential for additional receivers to experience noticeable, clearly audible, moderately intrusive and highly intrusive noise impacts.

The same management and mitigation measures will be implemented for all additional affected receivers, as noted in Section 8 of the endorsed CNVIS and as per Section 4 below.

2.2 Pedestrian Bridge Works - Typical (W.016A)

2.2.1 Scope

The additional work scenario has been identified in the Albury Precinct Consistency Assessment, with this area required for the wider scope associated at the Albury Yard clearances enhancement site and will enable and support the construction of the concrete pedestrian ramp.

This CNVIS addendum has assessed the work area required, using SLR Predict, with the following noted:

Plant and equipment

- Crane (mobile)
- Excavator – Tracked (20 tonne)
- Front end loader
- Telescopic handler
- Truck - Medium rigid
- Light vehicles

Construction hours

- Standard approved construction hours:
 - 7am to 6pm Monday to Friday, inclusive
 - 7am to 6pm Saturday.
- Daytime OOH:
 - 8am to 6pm Sunday and Public Holidays.

2.2.2 Assessment

As noted above, the additional work area has been assessed utilising SLR Predict. The plant and equipment list as noted above, has been considered at representative utilisation rates, within a 15-minute assessment period.

2.2.3 Results

The SLR Predict results are presented in Appendix B, for day-time OOH, as the most affected period.

Table 4 provides a summary of the exceedances identified through SLR Predict, with the following noted:

- W.014A exceedances identified in the SLR Predict results

A21 | ALBURY TO ILLABO
ALBURY YARD & RIVERINA HIGHWAY – CONSTRUCTION NOISE AND VIBRATION IMPACT STATEMENT ADDENDUM

TABLE 4: EXCEEDANCES FOR W.016A

ASSESSMENT RESULTS	NUMBER OF RESIDENTIAL RECEIVERS WITH NML EXCEEDANCE
	SLR Predict – W.016A (new work scenario)
Total Lw (dBA)	111
Noticeable (1-5 dB)	2
Clearly Audible (6-15 dB)	14
Moderately Intrusive (16-25 dB)	7
Highly Intrusive (>25 dB)	2

There is a limitation in allowing a comparison of the results with other work scenarios in the endorsed CNVIS due to a significant difference in location, plant and equipment. This new work scenario (W.016A) has been considered and assessed on its own.

There is the potential for additional receivers to experience noticeable, clearly audible, moderately intrusive and highly intrusive noise impacts.

The same management and mitigation measures will be implemented for all additional affected receivers, as noted in Section 8 of the endorsed CNVIS and as per Section 4 below.

3 VIBRATION ASSESSMENT

3.1 Site establishment (W.001A)

There are no vibration intensive plant and equipment proposed as part of W.001A; therefore, no vibration impacts are expected.

3.2 Pedestrian Bridge Works - Typical (W.016A)

There are no vibration intensive plant and equipment proposed as part of W.016A; therefore, no vibration impacts are expected.

4 CONCLUSION

4.1 Mitigation and management measures

As this is an addendum to the endorsed CNVIS for Albury Yard and Riverina Hwy, the same mitigation and management measures apply as noted in Section 8 of the CNVIS.

4.2 Additional mitigation measures

As noted in Figure 3, Figure 4 and under Appendix A and Appendix B, the SLR Predict noise results include a section on all applicable additional mitigation measures. These additional mitigation measures will be implemented where appropriate.

A21 | ALBURY TO ILLABO
ALBURY YARD & RIVERINA HIGHWAY – CONSTRUCTION NOISE AND VIBRATION IMPACT STATEMENT ADDENDUM

Airborne Noise - Additional Mitigation Measures Matrix				
Time Period	Exceedance of NML	Perception	Duration	Communication Category/Management Measure
OOHW Daytime Period Sunday 7am - 6pm (including public holidays)	<5	Noticeable	Any	CO1
	5 - 15	Clearly audible	Any	CO1
	16 - 25	Moderately intrusive	Any	CO1, CO2
	>25	Highly intrusive	Any	CO1, CO2
OOHW Evening Period Monday - Sunday 6pm - 10pm (including public holidays)	<5	Noticeable	Any	CO1
	5 - 15	Clearly audible	Any	CO1
	16 - 25	Moderately intrusive	Any	CO1, CO2
	>25	Highly intrusive	Any	CO1, CO2
			>2 consecutive rest periods	CO1, CO2, RO
OOHW Night Period Monday - Sunday 10pm - 7am (including public holidays)	<5	Noticeable	Any	CO1
	5 - 15	Clearly audible	Any	CO1
	16 - 25	Moderately intrusive	Any	CO1, CO2
			>2 consecutive sleep periods	CO1, CO2, RO, AO
	>25	Highly intrusive	Any	CO1, CO2, RO
			>2 consecutive sleep periods	CO1, CO2, RO, AO, AltA

FIGURE 3: ADDITIONAL MITIGATION MEASURES MATRIX – NOISE

A21 | ALBURY TO ILLABO
ALBURY YARD & RIVERINA HIGHWAY – CONSTRUCTION NOISE AND VIBRATION IMPACT STATEMENT ADDENDUM

Vibration - Additional Mitigation Measures Matrix			
Time Period	Duration	Exceedance of 'preferred' value	Exceedance of 'maximum' value
OOHW Daytime Period Sunday 8am-6pm	Any	CO1, CO2	CO1, CO2, RO
OOHW Evening Period Mon-Sun 6pm-10pm	Any	CO1, CO2	CO1, CO2, RO
OOHW Night Period Mon-Sat 10pm-7am Sun 10pm-8am	Any	CO1, CO2, RO	CO1, CO2, RO, AltA
Additional Mitigation Measures			
Measure		Abbreviation	
Communication (Category 1) ¹		CO1	
Communication (Category 2) ²		CO2	
Respite Offer ³		RO	
Alternative Accommodation		AltA	
Agreement with Owners		AO	
<p>Note 1: CO1: Communication to provide information on the OOHW via methods such as letter box drop, email, newsletter, media advertisements and/ or website prior to the works commencing.</p> <p>Note 2: CO2: Communication should be personalised (e.g. door knock, meeting, telephone call). Contact with these residents should commence early to enable feedback to be considered by the proposal.</p> <p>Note 3: RO are not applicable to non-residential receivers. RO may comprise of pre-purchased movie tickets, dinner vouchers or similar. RO can also be provided by limiting high noise generating works and allowing at least a one-hour respite period between blocks of work. Where possible, the timing of this respite should be discussed with the impacted community.</p>			
Receiver Types			
Code	Description	Code	Description
RES	Residential	OED	Other Educational
COM	Commercial	OHO	Other Hotel
IND	Industrial	OLI	Other Library
OOA	Other Outdoor Active Recreation	OME	Other Medical
OOP	Other Outdoor Passive Recreation	OPW	Other Place of Worship
OCC	Other Child Care	OPB	Other Public Building

FIGURE 4: ADDITIONAL MITIGATION MEASURES MATRIX – NOISE & VIBRATION



APPENDICES



APPENDIX A

SLR Predict W.001A - Noise



Construction Noise and Vibration Impact Statement (CNVIS)

This report presents the outcomes of detailed noise/vibration modelling relating to specific construction activities proposed on site in accordance with the methodology outlined in the *Construction Noise and Vibration Management Plan (CNVMP)* and overarching *Construction Noise and Vibration Impact Statement (CNVIS)*.

Prior to detailed noise/vibration modelling being undertaken, work activities are reviewed and considered in relation to industry best practice, consistent with the requirements of the CNVMP. Consideration is first given to eliminating the noise/vibration emissions so far as reasonably practicable. Where elimination is not practicable, efforts are made to reduce the risk as far as practical by implementing noise and vibration management measures as outlined in the overarching CNVIS and CNVMP.

Examples of these measures include selecting the quietest equipment and processes to complete the works, considering staging and periods of respite to minimise prolonged periods of noise and vibration exposure, and maximising distances between construction activities and sensitive receivers.

Consultation with Affected Receivers

In accordance with CoA E78, the CNVIS must include specific mitigation measures identified through consultation with affected sensitive land user(s) and the mitigation measures must be implemented for the duration of the Work. Details of this consultation are provided in the overarching CNVIS for each enhancement site.

Predicted Noise Levels

The assessment presents the highest predicted level at each receiver building, considering predictions at each floor and façade from all potential work areas. The assessment is generally considered conservative as the calculations assume several items of construction equipment are in use at the same time within each work area. The assessment uses 'realistic worst-case' scenarios to determine the impacts from the noisiest 15-minute period that is likely to occur for each work scenario.

Assessment Details

Author Name	
Author Email	noiseassessments@martinus.com.au
Author Organisation	Martinus Rail
Project Name	A2I - Albury to Illabo
Assessment Name	Albury Site Establishment (W.001A)
Assessment Number	391
Stage	A2I Construction
Permit Number	
Start Date	2026-02-08
End Date	2026-02-12
Assessment Period	Day - standard

Equipment Details

Plant/Equipment	Equipment Sound Power Level (Unadjusted), dBA	Number of Units	Temporary Noise Barrier
1: (Height: Ground)	Total: 115		
Hand tools (electric) 75% operation	102	1	No
Hand tools (pneumatic) 75% operation	116	1	No
Light Vehicle (steady state) 25% operation	87	1	No
Water Cart 75% operation	105	1	No

Note 1: Equipment classed as 'annoying' in the *Interim Construction Noise Guideline (DECC, 2009)* include a 5 dB correction.

Note 2: Equipment sound power levels consider the mitigation measures outlined in the overarching CNVIS to provide mitigated results.

Assessment Results



	Residential	Non-Residential
 Highly Intrusive	2 properties	0 property
 Moderately Intrusive	10 properties	0 property
 Clearly Audible	16 properties	1 property
 Above HNA	2 properties	0 property

Legend

-  Project Boundary
-  Work Areas
-  Barriers

Results by Receiver

Address	Land Use	Noise Catchment Area	Construction Noise Management Level, dBA	Predicted Noise Level, dBA	Predicted Noise Level Above Noise Management Level, dB	Noise Category
381 KENILWORTH ST, EAST ALBURY NSW 2640	RES	NCA02	55	81	26	Highly Intrusive Above HNA
380 KENILWORTH ST, EAST ALBURY NSW 2640	RES	NCA02	55	76	21	Highly Intrusive Above HNA
379 KENILWORTH ST, EAST ALBURY NSW 2640	RES	NCA02	55	74	19	Moderately Intrusive
376 KENILWORTH ST, EAST ALBURY NSW 2640	RES	NCA02	55	73	18	Moderately Intrusive
373 KENILWORTH ST, EAST ALBURY NSW 2640	RES	NCA02	55	72	17	Moderately Intrusive
372 KENILWORTH ST, EAST ALBURY NSW 2640	RES	NCA02	55	71	16	Moderately Intrusive
371 KENILWORTH ST, EAST ALBURY NSW 2640	RES	NCA02	55	70	15	Moderately Intrusive
380 KENILWORTH ST, EAST ALBURY NSW 2640	RES	NCA02	55	70	15	Moderately Intrusive

Results by Receiver

Address	Land Use	Noise Catchment Area	Construction Noise Management Level, dBA	Predicted Noise Level, dBA	Predicted Noise Level Above Noise Management Level, dB	Noise Category
382 CENTENARY ST, EAST ALBURY NSW 2640	RES	NCA02	55	69	14	Moderately Intrusive
3/481 HANEL ST, EAST ALBURY NSW 2640	RES	NCA02	55	68	13	Moderately Intrusive
1/474 HANEL ST, EAST ALBURY NSW 2640	RES	NCA02	55	67	12	Moderately Intrusive
476 HANEL ST, EAST ALBURY NSW 2640	RES	NCA02	55	67	12	Moderately Intrusive
365 KENILWORTH ST, EAST ALBURY NSW 2640	RES	NCA02	55	65	10	Clearly Audible
360 KENILWORTH ST, EAST ALBURY NSW 2640	RES	NCA02	55	65	10	Clearly Audible
1/483 HANEL ST, EAST ALBURY NSW 2640	RES	NCA02	55	65	10	Clearly Audible
373 WOODSTOCK CT, EAST ALBURY NSW 2640	OCC	NCA02	45	53	8	Clearly Audible
363 KENILWORTH ST, EAST ALBURY NSW 2640	RES	NCA02	55	63	8	Clearly Audible
3/481 HANEL ST, EAST ALBURY NSW 2640	RES	NCA02	55	63	8	Clearly Audible

Results by Receiver

Address	Land Use	Noise Catchment Area	Construction Noise Management Level, dBA	Predicted Noise Level, dBA	Predicted Noise Level Above Noise Management Level, dB	Noise Category
359 KENILWORTH ST, EAST ALBURY NSW 2640	RES	NCA02	55	62	7	Clearly Audible
369 KENILWORTH ST, EAST ALBURY NSW 2640	RES	NCA02	55	62	7	Clearly Audible
357 KENILWORTH ST, EAST ALBURY NSW 2640	RES	NCA02	55	61	6	Clearly Audible
355 KENILWORTH ST, EAST ALBURY NSW 2640	RES	NCA02	55	60	5	Clearly Audible
2/356 KENILWORTH ST, EAST ALBURY NSW 2640	RES	NCA02	55	60	5	Clearly Audible
351 KENILWORTH ST, EAST ALBURY NSW 2640	RES	NCA02	55	59	4	Clearly Audible
473 SCHUBACH ST, EAST ALBURY NSW 2640	RES	NCA02	55	58	3	Clearly Audible
375 WOODSTOCK CT, EAST ALBURY NSW 2640	RES	NCA02	55	57	2	Clearly Audible

Results by Receiver

Address	Land Use	Noise Catchment Area	Construction Noise Management Level, dBA	Predicted Noise Level, dBA	Predicted Noise Level Above Noise Management Level, dB	Noise Category
383 CENTENARY ST, EAST ALBURY NSW 2640	RES	NCA02	55	57	2	Clearly Audible
5/346 NORFOLK ST, EAST ALBURY NSW 2640	RES	NCA02	55	56	1	Clearly Audible
474 SCHUBACH ST, EAST ALBURY NSW 2640	RES	NCA02	55	56	1	Clearly Audible

Recommended Mitigation Measures

This assessment has been conducted with regard to the relevant CNVIS and CNVMP. To manage noise and vibration impacts, project specific mitigation measures may be considered such as reviewing construction staging methodology to identify opportunities to schedule intensive works during less sensitive time periods and by providing a clear process for community engagement and complaints. Likewise, the requirements and actionable items within the overarching CNVIS and CNVMP should be considered and adopted where appropriate. Following the consideration of project specific noise mitigation measures, additional noise mitigation measures to be explored are described in the Inland Rail NSW Construction Noise and Vibration Framework (CNVF) and summarised below.

Airborne Noise - Additional Mitigation Measures Matrix				
Time Period	Exceedance of NML	Perception	Duration	Communication Category/Management Measure
OOHW Daytime Period Sunday 7am - 6pm (including public holidays)	<5	Noticeable	Any	CO1
	5 - 15	Clearly audible	Any	CO1
	16 - 25	Moderately intrusive	Any	CO1, CO2
	>25	Highly intrusive	Any	CO1, CO2
OOHW Evening Period Monday - Sunday 6pm - 10pm (including public holidays)	<5	Noticeable	Any	CO1
	5 - 15	Clearly audible	Any	CO1
	16 - 25	Moderately intrusive	Any	CO1, CO2
	>25	Highly intrusive	>2 consecutive rest periods	CO1, CO2, RO
OOHW Night Period Monday - Sunday 10pm - 7am (including public holidays)	<5	Noticeable	Any	CO1
	5 - 15	Clearly audible	Any	CO1
	16 - 25	Moderately intrusive	Any	CO1, CO2
			>2 consecutive sleep periods	CO1, CO2, RO, AO
	>25	Highly intrusive	>2 consecutive sleep periods	CO1, CO2, RO, AO, AltA

Vibration - Additional Mitigation Measures Matrix

Time Period	Duration	Exceedance of 'preferred' value	Exceedance of 'maximum' value
OOHW Daytime Period Sunday 8am-6pm	Any	CO1, CO2	CO1, CO2, RO
OOHW Evening Period Mon-Sun 6pm-10pm	Any	CO1, CO2	CO1, CO2, RO
OOHW Night Period Mon-Sat 10pm-7am Sun 10pm-8am	Any	CO1, CO2, RO	CO1, CO2, RO, AltA

Additional Mitigation Measures

Measure	Abbreviation
Communication (Category 1) ¹	CO1
Communication (Category 2) ²	CO2
Respite Offer ³	RO
Alternative Accommodation	AltA
Agreement with Owners	AO

Note 1: CO1: Communication to provide information on the OOHW via methods such as letter box drop, email, newsletter, media advertisements and/ or website prior to the works commencing.

Note 2: CO2: Communication should be personalised (e.g. door knock, meeting, telephone call). Contact with these residents should commence early to enable feedback to be considered by the proposal.

Note 3: RO are not applicable to non-residential receivers. RO may comprise of pre-purchased movie tickets, dinner vouchers or similar. RO can also be provided by limiting high noise generating works and allowing at least a one-hour respite period between blocks of work. Where possible, the timing of this respite should be discussed with the impacted community.

Receiver Types

Code	Description	Code	Description
RES	Residential	OED	Other Educational
COM	Commercial	OHO	Other Hotel
IND	Industrial	OLI	Other Library
OOA	Other Outdoor Active Recreation	OME	Other Medical
OOP	Other Outdoor Passive Recreation	OPW	Other Place of Worship
OCC	Other Child Care	OPB	Other Public Building



APPENDIX B

SLR Predict W.016A - Noise



Construction Noise and Vibration Impact Statement (CNVIS)

This report presents the outcomes of detailed noise/vibration modelling relating to specific construction activities proposed on site in accordance with the methodology outlined in the *Construction Noise and Vibration Management Plan (CNVMP)* and overarching *Construction Noise and Vibration Impact Statement (CNVIS)*.

Prior to detailed noise/vibration modelling being undertaken, work activities are reviewed and considered in relation to industry best practice, consistent with the requirements of the CNVMP. Consideration is first given to eliminating the noise/vibration emissions so far as reasonably practicable. Where elimination is not practicable, efforts are made to reduce the risk as far as practical by implementing noise and vibration management measures as outlined in the overarching CNVIS and CNVMP.

Examples of these measures include selecting the quietest equipment and processes to complete the works, considering staging and periods of respite to minimise prolonged periods of noise and vibration exposure, and maximising distances between construction activities and sensitive receivers.

Consultation with Affected Receivers

In accordance with CoA E78, the CNVIS must include specific mitigation measures identified through consultation with affected sensitive land user(s) and the mitigation measures must be implemented for the duration of the Work. Details of this consultation are provided in the overarching CNVIS for each enhancement site.

Predicted Noise Levels

The assessment presents the highest predicted level at each receiver building, considering predictions at each floor and façade from all potential work areas. The assessment is generally considered conservative as the calculations assume several items of construction equipment are in use at the same time within each work area. The assessment uses 'realistic worst-case' scenarios to determine the impacts from the noisiest 15-minute period that is likely to occur for each work scenario.

Assessment Details

Author Name	
Author Email	noiseassessments@martinus.com.au
Author Organisation	Martinus Rail
Project Name	A2I - Albury to Illabo
Assessment Name	Albury Pedestrian Bridge Works - Typical (W.016A)
Assessment Number	392
Stage	A2I Construction
Permit Number	
Start Date	2026-02-09
End Date	2026-02-20
Assessment Period	Day - standard

Equipment Details

Plant/Equipment	Equipment Sound Power Level (Unadjusted), dBA	Number of Units	Temporary Noise Barrier
1: (Height: Ground)	Total: 111		
Crane (mobile) 30% operation	104	1	No
Excavator - Tracked (20T) 50% operation	105	1	No
Front End Loader 50% operation	113	1	No
Light Vehicle (steady state) 25% operation	87	2	No
Telescopic Handler 50% operation	99	1	No
Truck - medium rigid (20T) 25% operation	103	2	No

Note 1: Equipment classed as 'annoying' in the *Interim Construction Noise Guideline (DECC, 2009)* include a 5 dB correction.


Note 2: Equipment sound power levels consider the mitigation measures outlined in the overarching CNVIS to provide mitigated results.

Assessment Results



	Residential	Non-Residential
 Highly Intrusive	2 properties	0 property
 Moderately Intrusive	7 properties	0 property
 Clearly Audible	14 properties	1 property
 Above HNA	2 properties	0 property

Legend

	Project Boundary
	Work Areas
	Barriers

Results by Receiver

Address	Land Use	Noise Catchment Area	Construction Noise Management Level, dBA	Predicted Noise Level, dBA	Predicted Noise Level Above Noise Management Level, dB	Noise Category
380 KENILWORTH ST, EAST ALBURY NSW 2640	RES	NCA02	55	79	24	Highly Intrusive Above HNA
380 KENILWORTH ST, EAST ALBURY NSW 2640	RES	NCA02	55	76	21	Highly Intrusive Above HNA
381 KENILWORTH ST, EAST ALBURY NSW 2640	RES	NCA02	55	73	18	Moderately Intrusive
3/481 HANEL ST, EAST ALBURY NSW 2640	RES	NCA02	55	73	18	Moderately Intrusive
376 KENILWORTH ST, EAST ALBURY NSW 2640	RES	NCA02	55	71	16	Moderately Intrusive
379 KENILWORTH ST, EAST ALBURY NSW 2640	RES	NCA02	55	69	14	Moderately Intrusive
1/483 HANEL ST, EAST ALBURY NSW 2640	RES	NCA02	55	69	14	Moderately Intrusive
372 KENILWORTH ST, EAST ALBURY NSW 2640	RES	NCA02	55	68	13	Moderately Intrusive

Results by Receiver

Address	Land Use	Noise Catchment Area	Construction Noise Management Level, dBA	Predicted Noise Level, dBA	Predicted Noise Level Above Noise Management Level, dB	Noise Category
373 KENILWORTH ST, EAST ALBURY NSW 2640	RES	NCA02	55	67	12	Moderately Intrusive
371 KENILWORTH ST, EAST ALBURY NSW 2640	RES	NCA02	55	65	10	Clearly Audible
382 CENTENARY ST, EAST ALBURY NSW 2640	RES	NCA02	55	63	8	Clearly Audible
1/474 HANEL ST, EAST ALBURY NSW 2640	RES	NCA02	55	63	8	Clearly Audible
373 WOODSTOCK CT, EAST ALBURY NSW 2640	OCC	NCA02	45	52	7	Clearly Audible
365 KENILWORTH ST, EAST ALBURY NSW 2640	RES	NCA02	55	61	6	Clearly Audible
369 KENILWORTH ST, EAST ALBURY NSW 2640	RES	NCA02	55	61	6	Clearly Audible
3/481 HANEL ST, EAST ALBURY NSW 2640	RES	NCA02	55	61	6	Clearly Audible
363 KENILWORTH ST, EAST ALBURY NSW 2640	RES	NCA02	55	59	4	Clearly Audible

Results by Receiver

Address	Land Use	Noise Catchment Area	Construction Noise Management Level, dBA	Predicted Noise Level, dBA	Predicted Noise Level Above Noise Management Level, dB	Noise Category
476 HANEL ST, EAST ALBURY NSW 2640	RES	NCA02	55	59	4	Clearly Audible
359 KENILWORTH ST, EAST ALBURY NSW 2640	RES	NCA02	55	58	3	Clearly Audible
360 KENILWORTH ST, EAST ALBURY NSW 2640	RES	NCA02	55	58	3	Clearly Audible
355 KENILWORTH ST, EAST ALBURY NSW 2640	RES	NCA02	55	57	2	Clearly Audible
357 KENILWORTH ST, EAST ALBURY NSW 2640	RES	NCA02	55	57	2	Clearly Audible
480 HANEL ST, EAST ALBURY NSW 2640	RES	NCA02	55	57	2	Clearly Audible
351 KENILWORTH ST, EAST ALBURY NSW 2640	RES	NCA02	55	56	1	Clearly Audible

Recommended Mitigation Measures

This assessment has been conducted with regard to the relevant CNVIS and CNVMP. To manage noise and vibration impacts, project specific mitigation measures may be considered such as reviewing construction staging methodology to identify opportunities to schedule intensive works during less sensitive time periods and by providing a clear process for community engagement and complaints. Likewise, the requirements and actionable items within the overarching CNVIS and CNVMP should be considered and adopted where appropriate. Following the consideration of project specific noise mitigation measures, additional noise mitigation measures to be explored are described in the Inland Rail NSW Construction Noise and Vibration Framework (CNVF) and summarised below.

Airborne Noise - Additional Mitigation Measures Matrix				
Time Period	Exceedance of NML	Perception	Duration	Communication Category/Management Measure
OOHW Daytime Period Sunday 7am - 6pm (including public holidays)	<5	Noticeable	Any	CO1
	5 - 15	Clearly audible	Any	CO1
	16 - 25	Moderately intrusive	Any	CO1, CO2
	>25	Highly intrusive	Any	CO1, CO2
OOHW Evening Period Monday - Sunday 6pm - 10pm (including public holidays)	<5	Noticeable	Any	CO1
	5 - 15	Clearly audible	Any	CO1
	16 - 25	Moderately intrusive	Any	CO1, CO2
	>25	Highly intrusive	>2 consecutive rest periods	CO1, CO2, RO
OOHW Night Period Monday - Sunday 10pm - 7am (including public holidays)	<5	Noticeable	Any	CO1
	5 - 15	Clearly audible	Any	CO1
	16 - 25	Moderately intrusive	Any	CO1, CO2
			>2 consecutive sleep periods	CO1, CO2, RO, AO
	>25	Highly intrusive	>2 consecutive sleep periods	CO1, CO2, RO, AO, AltA

Vibration - Additional Mitigation Measures Matrix

Time Period	Duration	Exceedance of 'preferred' value	Exceedance of 'maximum' value
OOHW Daytime Period Sunday 8am-6pm	Any	CO1, CO2	CO1, CO2, RO
OOHW Evening Period Mon-Sun 6pm-10pm	Any	CO1, CO2	CO1, CO2, RO
OOHW Night Period Mon-Sat 10pm-7am Sun 10pm-8am	Any	CO1, CO2, RO	CO1, CO2, RO, AltA

Additional Mitigation Measures

Measure	Abbreviation
Communication (Category 1) ¹	CO1
Communication (Category 2) ²	CO2
Respite Offer ³	RO
Alternative Accommodation	AltA
Agreement with Owners	AO

Note 1: CO1: Communication to provide information on the OOHW via methods such as letter box drop, email, newsletter, media advertisements and/ or website prior to the works commencing.

Note 2: CO2: Communication should be personalised (e.g. door knock, meeting, telephone call). Contact with these residents should commence early to enable feedback to be considered by the proposal.

Note 3: RO are not applicable to non-residential receivers. RO may comprise of pre-purchased movie tickets, dinner vouchers or similar. RO can also be provided by limiting high noise generating works and allowing at least a one-hour respite period between blocks of work. Where possible, the timing of this respite should be discussed with the impacted community.

Receiver Types

Code	Description	Code	Description
RES	Residential	OED	Other Educational
COM	Commercial	OHO	Other Hotel
IND	Industrial	OLI	Other Library
OOA	Other Outdoor Active Recreation	OME	Other Medical
OOP	Other Outdoor Passive Recreation	OPW	Other Place of Worship
OCC	Other Child Care	OPB	Other Public Building

