



This document is uncontrolled
when printed.

MARTINUS INLAND RAIL



PEARSON STREET BRIDGE AND CASSIDY PARADE FOOTBRIDGE – CONSTRUCTION NOISE AND VIBRATION IMPACT STATEMENT ADDENDUM 5

A2I | Albury to Illabo

CONTRACT NUMBER: 0052

PROJECT DOCUMENT NUMBER:

6-0052-210-EEC-W0-AS-0002_ADD5

A21 | ALBURY TO ILLABO
PEARSON STREET BRIDGE AND CASSIDY PARADE FOOTBRIDGE- CONSTRUCTION NOISE AND VIBRATION IMPACT STATEMENT
ADDENDUM 5

Document Control

DOCUMENT TITLE:	Pearson Street Bridge and Cassidy Parade Footbridge – Construction Noise and Vibration Impact Statement Addendum 5		
DOCUMENT OWNER:	Chris Standing – Environment, Approvals and Sustainability Manager (A2P)		
PREPARED BY:	Constance Georgiou	TITLE:	Environmental Approvals Advisor
SIGNATURE:	Signed by: 		DATE: 19/03/2026
REVIEWED BY:	Steven Dando	TITLE:	Environmental Approvals Advisor
SIGNATURE:	Signed by: 		DATE: 19/03/2026

Approved by

NAME	TITLE	SIGNATURE	DATE
Chris Standing	Environment, Approvals and Sustainability Manager (A2P)	DocuSigned by: 	19/03/2026

Revision History

REVISION	REVISION DATE	AMENDMENT	DATE TO CLIENT
0	19/03/2026	Issued for information	19/03/2026

Disclaimer: This document has been prepared by Martinus. Use of this document shall be subject to the terms of the relevant contract with Martinus. The electronic file of this current revision is the controlled copy. This file is stored on Martinus' server located at Head Office, Unit 1, 23-27 Waratah St, Kirrawee, NSW.

This document is the property of and contains proprietary information owned by Martinus. No permission is granted to publish, reproduce, transmit or disclose to another party, any information contained in this document, in whole or in part, without prior written permission from the issuing authority.

For the purpose of this document, Martinus refers to the Martinus Group of companies.

This document is uncontrolled when printed.

A21 | ALBURY TO ILLABO

**PEARSON STREET BRIDGE AND CASSIDY PARADE FOOTBRIDGE– CONSTRUCTION NOISE AND VIBRATION IMPACT STATEMENT
ADDENDUM 5**

TABLE OF CONTENTS

GLOSSARY	4
1 INTRODUCTION.....	5
1.1 Purpose of this Addendum.....	5
2 NOISE ASSESSMENT	6
2.1 Cassidy Parade – crane operation (W.002A).....	6
3 VIBRATION ASSESSMENT.....	8
3.1 Cassidy Parade – crane operation (W.002A).....	8
4 CONCLUSION	9
4.1 Mitigation and management measures.....	9
4.2 Additional mitigation measures.....	9
APPENDICES.....	12
APPENDIX A	13
SLR Predict (W.002A) – Noise.....	13

LIST OF TABLES

Table 1: Definitions.....	4
Table 2: Work scenario description	6
Table 3: Exceedance comparisons for W.002A	7

LIST OF FIGURES

Figure 1: Work area for W.002A (CNVIS Addendum).....	5
Figure 2: Additional mitigation measures matrix – noise.....	10
Figure 3: Additional mitigation measures matrix – vibration.....	11
Figure 4: Additional mitigation measures matrix – notes.....	11

A2I | ALBURY TO ILLABO**PEARSON STREET BRIDGE AND CASSIDY PARADE FOOTBRIDGE– CONSTRUCTION NOISE AND VIBRATION IMPACT STATEMENT
ADDENDUM 5**

GLOSSARY

Specific terms and acronyms used throughout this plan are listed and described in Table 1 below.

TABLE 1: DEFINITIONS

TERM	DEFINITION
A2I	Albury to Illabo section of the Inland Rail project
Cassidy Parade	Cassidy Parade footbridge enhancement site
CNVIS	Construction Noise and Vibration Impact Statement
CNVIS Addendum	This document
km	Kilometres
m	Metres
NML	Noise Management Level
OOH	Out-of-hours
Project	Albury to Illabo project approved under section 5.19 of the EP&A Act on 8 October 2024, as modified on 13 August 2025
Pearson Street	Pearson Street bridge enhancement site
Pearson Street Bridge and Cassidy Parade Footbridge CNVIS; the endorsed CNVIS	Pearson Street Bridge and Cassidy Parade Footbridge Construction Noise and Vibration Impact Statement (Doc No. 6-0052-210-EEC-W0-AS-0002_0)
RBL	Rating Background Level
SLR Predict	A2I noise and vibration management tool
T	Tonnes
W.002A	Work Scenario 2A – Crane Operation

A21 | ALBURY TO ILLABO

PEARSON STREET BRIDGE AND CASSIDY PARADE FOOTBRIDGE- CONSTRUCTION NOISE AND VIBRATION IMPACT STATEMENT ADDENDUM 5

1 INTRODUCTION

1.1 Purpose of this Addendum

This Construction Noise and Vibration Impact Statement Addendum (CNVIS Addendum) has been prepared to identify and assess the additional work scenario required to support and enable the wider scope of activities associated with the Cassidy Parade footbridge enhancement site (Cassidy Parade) works. This CNVIS Addendum will form part of the endorsed Pearson Street Bridge and Cassidy Parade Footbridge CNVIS (Doc No: 6-0052-210-EEC-W0-AS-0002_0) (endorsed CNVIS).

This CNVIS Addendum should be reviewed in conjunction with the endorsed CNVIS, including adopted rating background levels (RBLs), noise management levels (NMLs) and assessment criteria in accordance with the Infrastructure Approval (SSI-10055). The following figure identifies the work area assessed in this CNVIS Addendum.



FIGURE 1: WORK AREA FOR W.002A (CNVIS ADDENDUM)

A2I | ALBURY TO ILLABO

PEARSON STREET BRIDGE AND CASSIDY PARADE FOOTBRIDGE– CONSTRUCTION NOISE AND VIBRATION IMPACT STATEMENT ADDENDUM 5

2 NOISE ASSESSMENT

The potential construction noise levels from the proposed works have been predicted using SLR Predict, the A2I project-specific noise and vibration tool. This CNVIS Addendum assesses the work scenario identified in Table 2.

TABLE 2: WORK SCENARIO DESCRIPTION

ID	Scenario	Description	Total Lw
Cassidy Parade			
W.002A	Compound operation	<ul style="list-style-type: none"> Operation of crane 	<ul style="list-style-type: none"> 108

2.1 Cassidy Parade – crane operation (W.002A)

2.1.1 Scope

An additional work scenario (W.002A) is required to allow for access and operation of a crane that will enable the pedestrian bridge works associated at Cassidy Parade.

This CNVIS addendum has assessed the work area required which has been identified in the Wagga Precinct Consistency Assessment (CA) (Doc No: 6-0052-210-EAP-W0-AS-0001). The work area will be assessed using SLR Predict, A2I noise and vibration management tool, with the following noted:

Plant and equipment¹

- 1x Crane (mobile)
- 2x Truck – medium rigid (20T)
- 3x Light vehicles

Construction hours

- Standard approved hours:
 - 7am to 6pm Monday to Friday, inclusive
 - 7am to 6pm Saturday
- Day Out-of-Hours (OOH):
 - 8am to 6pm Sunday and public holidays

2.1.2 Assessment

The additional work scenario has been assessed utilising SLR Predict. The plant and equipment list (as noted above) has been considered as a worst-case scenario within a 15-minute assessment period. The operating time (utilisation %) of each plant and equipment is representative to site working conditions.

2.1.3 Results

The SLR Predict results are presented in Appendix A, for daytime out of hours, as the most affected period.

Table 3 provides a summary of the exceedances identified through various assessment. It compares the following:

- W.002 exceedances identified in the endorsed CNVIS
- W.002A exceedances assessed in the SLR Predict results for the additional work area (shown in Figure 1)

A21 | ALBURY TO ILLABO

**PEARSON STREET BRIDGE AND CASSIDY PARADE FOOTBRIDGE- CONSTRUCTION NOISE AND VIBRATION IMPACT STATEMENT
ADDENDUM 5**

TABLE 3: EXCEEDANCE COMPARISONS FOR W.002A

ASSESSMENT RESULTS (DAYTIME OOH)	NUMBER OF RESIDENTIAL RECEIVERS WITH NML EXCEEDANCE	
	CNVIS – W.002	SLR Predict – W.002A (additional work scenario)
Total Lw (dBA)	113	108
Noticeable (1-5 dB)	41	12
Clearly Audible (6-15 dB)	41	8
Moderately Intrusive (16-25 dB)	12	0
Highly Intrusive (>25 dB)	2	0

Table 3 shows an overall decrease in the intensity of the impacts, with a decreased number of receivers experiencing noticeable (1-5 dB), clearly audible (6-15 dB), moderately intrusive (16-25 dB) and highly intrusive (> 25 dB) impacts.

The decrease is most likely due to the difference in plant and equipment and location compared to the endorsed CNVIS.

A21 | ALBURY TO ILLABO

**PEARSON STREET BRIDGE AND CASSIDY PARADE FOOTBRIDGE – CONSTRUCTION NOISE AND VIBRATION IMPACT STATEMENT
ADDENDUM 5**

3 VIBRATION ASSESSMENT

3.1 Cassidy Parade – crane operation (W.002A)

There will be no vibration-intensive plant and equipment utilised for W.002A; therefore, there are no expected vibration impacts, and a vibration assessment will not be required for W.002A.

A21 | ALBURY TO ILLABO

**PEARSON STREET BRIDGE AND CASSIDY PARADE FOOTBRIDGE- CONSTRUCTION NOISE AND VIBRATION IMPACT STATEMENT
ADDENDUM 5**

4 CONCLUSION

4.1 Mitigation and management measures

As this is an addendum to the endorsed CNVIS for Pearson Street Bridge and Cassidy Parade Footbridge, the same mitigation and management measures apply as noted in Section 8 of the endorsed CNVIS.

4.2 Additional mitigation measures

As noted in Figure 2 to Figure 4 below and under Appendix A, the SLR Predict noise and vibration results include a section on all applicable additional mitigation measures. These additional mitigation measures will be implemented where appropriate.

A21 | ALBURY TO ILLABO

**PEARSON STREET BRIDGE AND CASSIDY PARADE FOOTBRIDGE- CONSTRUCTION NOISE AND VIBRATION IMPACT STATEMENT
ADDENDUM 5**

Airborne Noise - Additional Mitigation Measures Matrix				
Time Period	Exceedance of NML	Perception	Duration	Communication Category/Management Measure
OOHW Daytime Period Sunday 7am - 6pm (including public holidays)	<5	Noticeable	Any	CO1
	5 - 15	Clearly audible	Any	CO1
	16 - 25	Moderately intrusive	Any	CO1, CO2
	>25	Highly intrusive	Any	CO1, CO2
OOHW Evening Period Monday - Sunday 6pm - 10pm (including public holidays)	<5	Noticeable	Any	CO1
	5 - 15	Clearly audible	Any	CO1
	16 - 25	Moderately intrusive	Any	CO1, CO2
	>25	Highly intrusive	Any	CO1, CO2
			>2 consecutive rest periods	CO1, CO2, RO
OOHW Night Period Monday - Sunday 10pm - 7am (including public holidays)	<5	Noticeable	Any	CO1
	5 - 15	Clearly audible	Any	CO1
	16 - 25	Moderately intrusive	Any	CO1, CO2
			>2 consecutive sleep periods	CO1, CO2, RO, AO
	>25	Highly intrusive	Any	CO1, CO2, RO
			>2 consecutive sleep periods	CO1, CO2, RO, AO, AltA

FIGURE 2: ADDITIONAL MITIGATION MEASURES MATRIX – NOISE

A21 | ALBURY TO ILLABO
PEARSON STREET BRIDGE AND CASSIDY PARADE FOOTBRIDGE- CONSTRUCTION NOISE AND VIBRATION IMPACT STATEMENT
ADDENDUM 5

Vibration - Additional Mitigation Measures Matrix			
Time Period	Duration	Exceedance of 'preferred' value	Exceedance of 'maximum' value
OOHW Daytime Period	Any	CO1, CO2	CO1, CO2, RO
Sunday 8am-6pm			
OOHW Evening Period	Any	CO1, CO2	CO1, CO2, RO
Mon-Sun 6pm-10pm			
OOHW Night Period	Any	CO1, CO2, RO	CO1, CO2, RO, AltA
Mon-Sat 10pm-7am			
Sun 10pm-8am			

FIGURE 3: ADDITIONAL MITIGATION MEASURES MATRIX – VIBRATION

Additional Mitigation Measures			
Measure	Abbreviation		
Communication (Category 1) ¹	CO1		
Communication (Category 2) ²	CO2		
Respite Offer ³	RO		
Alternative Accommodation	AltA		
Agreement with Owners	AO		
Note 1: CO1: Communication to provide information on the OOHW via methods such as letter box drop, email, newsletter, media advertisements and/ or website prior to the works commencing.			
Note 2: CO2: Communication should be personalised (e.g. door knock, meeting, telephone call). Contact with these residents should commence early to enable feedback to be considered by the proposal.			
Note 3: RO are not applicable to non-residential receivers. RO may comprise of pre-purchased movie tickets, dinner vouchers or similar. RO can also be provided by limiting high noise generating works and allowing at least a one-hour respite period between blocks of work. Where possible, the timing of this respite should be discussed with the impacted community.			
Receiver Types			
Code	Description	Code	Description
RES	Residential	OED	Other Educational
COM	Commercial	OHO	Other Hotel
IND	Industrial	OLI	Other Library
OOA	Other Outdoor Active Recreation	OME	Other Medical
OOP	Other Outdoor Passive Recreation	OPW	Other Place of Worship
OCC	Other Child Care	OPB	Other Public Building

FIGURE 4: ADDITIONAL MITIGATION MEASURES MATRIX – NOTES

A21 | ALBURY TO ILLABO
PEARSON STREET BRIDGE AND CASSIDY PARADE FOOTBRIDGE- CONSTRUCTION NOISE AND VIBRATION IMPACT STATEMENT
ADDENDUM 5



APPENDICES

A21 | ALBURY TO ILLABO

**PEARSON STREET BRIDGE AND CASSIDY PARADE FOOTBRIDGE – CONSTRUCTION NOISE AND VIBRATION IMPACT STATEMENT
ADDENDUM 5**



APPENDIX A

SLR Predict (W.002A) – Noise



Construction Noise and Vibration Impact Statement (CNVIS)

This report presents the outcomes of detailed noise/vibration modelling relating to specific construction activities proposed on site in accordance with the methodology outlined in the *Construction Noise and Vibration Management Plan (CNVMP)* and overarching *Construction Noise and Vibration Impact Statement (CNVIS)*.

Prior to detailed noise/vibration modelling being undertaken, work activities are reviewed and considered in relation to industry best practice, consistent with the requirements of the CNVMP. Consideration is first given to eliminating the noise/vibration emissions so far as reasonably practicable. Where elimination is not practicable, efforts are made to reduce the risk as far as practical by implementing noise and vibration management measures as outlined in the overarching CNVIS and CNVMP.

Examples of these measures include selecting the quietest equipment and processes to complete the works, considering staging and periods of respite to minimise prolonged periods of noise and vibration exposure, and maximising distances between construction activities and sensitive receivers.

Consultation with Affected Receivers

In accordance with CoA E78, the CNVIS must include specific mitigation measures identified through consultation with affected sensitive land user(s) and the mitigation measures must be implemented for the duration of the Work. Details of this consultation are provided in the overarching CNVIS for each enhancement site.

Predicted Noise Levels

The assessment presents the highest predicted level at each receiver building, considering predictions at each floor and façade from all potential work areas. The assessment is generally considered conservative as the calculations assume several items of construction equipment are in use at the same time within each work area. The assessment uses 'realistic worst-case' scenarios to determine the impacts from the noisiest 15-minute period that is likely to occur for each work scenario.

Assessment Details

Author Name	
Author Email	noiseassessments@martinus.com.au
Author Organisation	Martinus Rail
Project Name	A2I - Albury to Illabo
Assessment Name	Cassidy/Pearson CNVIS Addendum 5 - W.002A
Assessment Number	419
Stage	A2I Construction
Permit Number	N/A
Start Date	2026-04-06
End Date	2026-04-06
Assessment Period	Day - out of hours

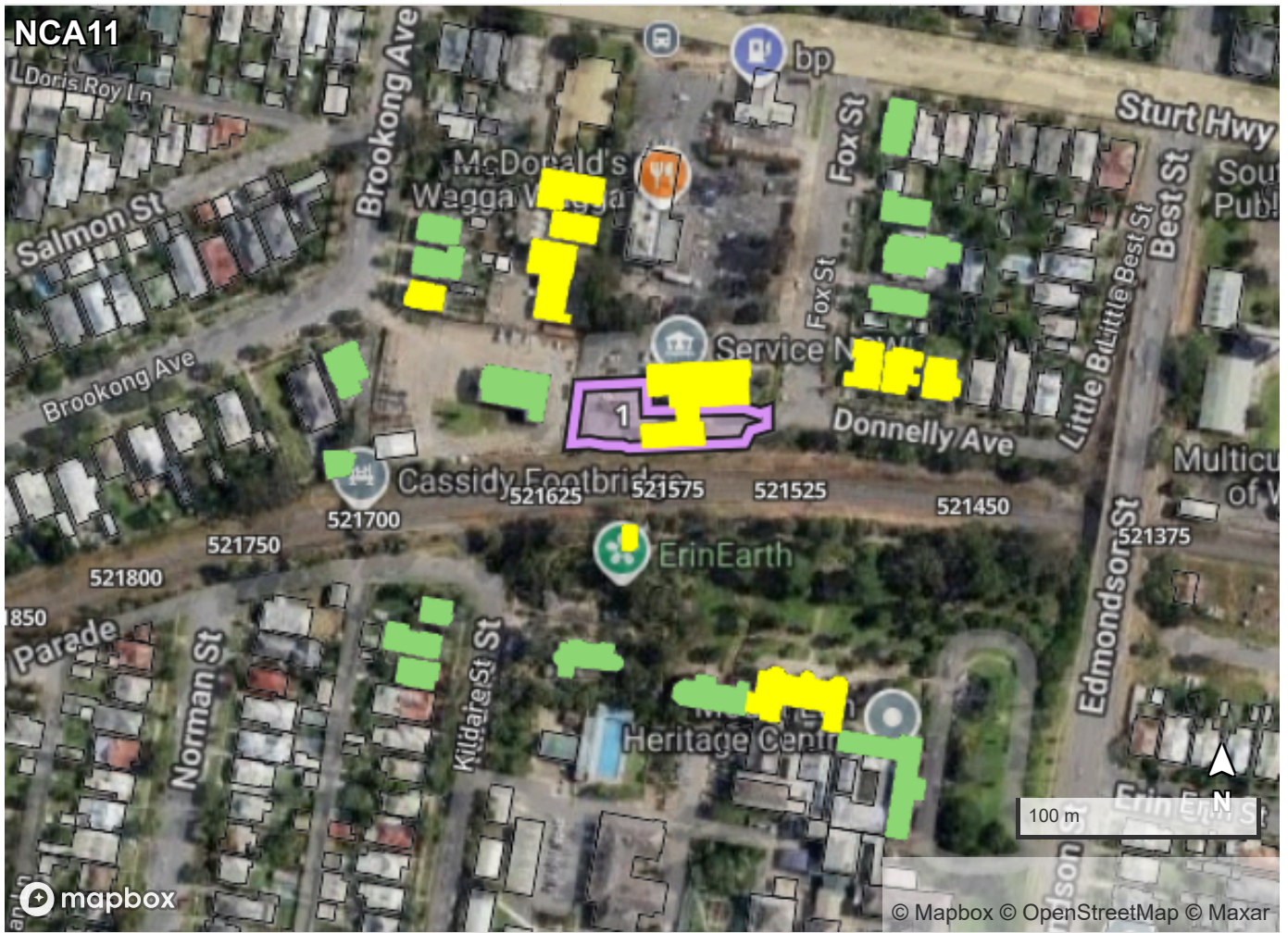
Equipment Details

Plant/Equipment	Equipment Sound Power Level (Unadjusted), dBA	Number of Units	Temporary Noise Barrier
1: (Height: Ground)	Total: 108		
Crane (mobile) 100% operation	104	1	No
Truck - medium rigid (20T) 75% operation	103	2	No
Light Vehicle (accelerating) 25% operation	95	3	No

Note 1: Equipment classed as 'annoying' in the *Interim Construction Noise Guideline (DECC, 2009)* include a 5 dB correction.

Note 2: Equipment sound power levels consider the mitigation measures outlined in the overarching CNVIS to provide mitigated results.

Assessment Results



	Residential	Non-Residential
 Highly Intrusive	0 property	0 property
 Moderately Intrusive	0 property	0 property
 Clearly Audible	8 properties	2 properties
 Noticeable	12 properties	3 properties

Legend

-  Project Boundary
-  Work Areas
-  Barriers

Results by Receiver

Address	Land Use	Noise Catchment Area	Construction Noise Management Level, dBA	Predicted Noise Level, dBA	Predicted Noise Level Above Noise Management Level, dB	Noise Category
188 EDWARD ST, WAGGA WAGGA NSW 2650	RES	NCA11	53	66	13	Clearly Audible
12 DONNELLY AV, WAGGA WAGGA NSW 2650	RES	NCA11	53	64	11	Clearly Audible
ERIN EARTH 1 KILDARE ST, TURVEY PARK NSW 2650	OED	NCA11	55	65	10	Clearly Audible
18 BROOKONG AV, WAGGA WAGGA NSW 2650	RES	NCA11	53	62	9	Clearly Audible
2 FOX ST, WAGGA WAGGA NSW 2650	COM	NCA11	70	78	8	Clearly Audible
10 DONNELLY AV, WAGGA WAGGA NSW 2650	RES	NCA11	53	61	8	Clearly Audible
1 KILDARE ST, TURVEY PARK NSW 2650	RES	NCA11	53	60	7	Clearly Audible
8 DONNELLY AV, WAGGA WAGGA NSW 2650	RES	NCA11	53	59	6	Clearly Audible
188 EDWARD ST, WAGGA WAGGA NSW 2650	RES	NCA11	53	59	6	Clearly Audible
188 EDWARD ST, WAGGA WAGGA NSW 2650	RES	NCA11	53	59	6	Clearly Audible

Results by Receiver

Address	Land Use	Noise Catchment Area	Construction Noise Management Level, dBA	Predicted Noise Level, dBA	Predicted Noise Level Above Noise Management Level, dB	Noise Category
1 FOX ST, WAGGA WAGGA NSW 2650	RES	NCA11	53	58	5	Noticeable
16 BROOKONG AV, WAGGA WAGGA NSW 2650	RES	NCA11	53	58	5	Noticeable
ERIN EARTH 1 KILDARE ST, TURVEY PARK NSW 2650	OED	NCA11	55	59	4	Noticeable
2 KILDARE ST, TURVEY PARK NSW 2650	RES	NCA11	53	57	4	Noticeable
3 FOX ST, WAGGA WAGGA NSW 2650	RES	NCA11	53	57	4	Noticeable
4 KILDARE ST, TURVEY PARK NSW 2650	RES	NCA11	53	56	3	Noticeable
20 BROOKONG AV, WAGGA WAGGA NSW 2650	COM	NCA11	70	73	3	Noticeable
14 BROOKONG AV, WAGGA WAGGA NSW 2650	RES	NCA11	53	56	3	Noticeable
ERIN EARTH 1 KILDARE ST, TURVEY PARK NSW 2650	OPW	NCA11	55	58	3	Noticeable
1 KILDARE ST, TURVEY PARK NSW 2650	RES	NCA11	53	55	2	Noticeable
5 FOX ST, WAGGA WAGGA NSW 2650	RES	NCA11	53	55	2	Noticeable

Results by Receiver

Address	Land Use	Noise Catchment Area	Construction Noise Management Level, dBA	Predicted Noise Level, dBA	Predicted Noise Level Above Noise Management Level, dB	Noise Category
24-26 BROOKONG AV, WAGGA WAGGA NSW 2650	RES	NCA11	53	55	2	Noticeable
6 KILDARE ST, TURVEY PARK NSW 2650	RES	NCA11	53	54	1	Noticeable
22 BROOKONG AV, WAGGA WAGGA NSW 2650	RES	NCA11	53	54	1	Noticeable
170 EDWARD ST, WAGGA WAGGA NSW 2650	RES	NCA11	53	54	1	Noticeable

Recommended Mitigation Measures

This assessment has been conducted with regard to the relevant CNVIS and CNVMP. To manage noise and vibration impacts, project specific mitigation measures may be considered such as reviewing construction staging methodology to identify opportunities to schedule intensive works during less sensitive time periods and by providing a clear process for community engagement and complaints. Likewise, the requirements and actionable items within the overarching CNVIS and CNVMP should be considered and adopted where appropriate. Following the consideration of project specific noise mitigation measures, additional noise mitigation measures to be explored are described in the Inland Rail NSW Construction Noise and Vibration Framework (CNVF) and summarised below.

Airborne Noise - Additional Mitigation Measures Matrix				
Time Period	Exceedance of NML	Perception	Duration	Communication Category/Management Measure
OOHW Daytime Period Sunday 7am - 6pm (including public holidays)	<5	Noticeable	Any	CO1
	5 - 15	Clearly audible	Any	CO1
	16 - 25	Moderately intrusive	Any	CO1, CO2
	>25	Highly intrusive	Any	CO1, CO2
OOHW Evening Period Monday - Sunday 6pm - 10pm (including public holidays)	<5	Noticeable	Any	CO1
	5 - 15	Clearly audible	Any	CO1
	16 - 25	Moderately intrusive	Any	CO1, CO2
	>25	Highly intrusive	>2 consecutive rest periods	CO1, CO2, RO
OOHW Night Period Monday - Sunday 10pm - 7am (including public holidays)	<5	Noticeable	Any	CO1
	5 - 15	Clearly audible	Any	CO1
	16 - 25	Moderately intrusive	Any	CO1, CO2
			>2 consecutive sleep periods	CO1, CO2, RO, AO
	>25	Highly intrusive	>2 consecutive sleep periods	CO1, CO2, RO, AO, AltA

Vibration - Additional Mitigation Measures Matrix

Time Period	Duration	Exceedance of 'preferred' value	Exceedance of 'maximum' value
OOHW Daytime Period Sunday 8am-6pm	Any	CO1, CO2	CO1, CO2, RO
OOHW Evening Period Mon-Sun 6pm-10pm	Any	CO1, CO2	CO1, CO2, RO
OOHW Night Period Mon-Sat 10pm-7am Sun 10pm-8am	Any	CO1, CO2, RO	CO1, CO2, RO, AltA

Additional Mitigation Measures

Measure	Abbreviation
Communication (Category 1) ¹	CO1
Communication (Category 2) ²	CO2
Respite Offer ³	RO
Alternative Accommodation	AltA
Agreement with Owners	AO

Note 1: CO1: Communication to provide information on the OOHW via methods such as letter box drop, email, newsletter, media advertisements and/ or website prior to the works commencing.

Note 2: CO2: Communication should be personalised (e.g. door knock, meeting, telephone call). Contact with these residents should commence early to enable feedback to be considered by the proposal.

Note 3: RO are not applicable to non-residential receivers. RO may comprise of pre-purchased movie tickets, dinner vouchers or similar. RO can also be provided by limiting high noise generating works and allowing at least a one-hour respite period between blocks of work. Where possible, the timing of this respite should be discussed with the impacted community.

Receiver Types

Code	Description	Code	Description
RES	Residential	OED	Other Educational
COM	Commercial	OHO	Other Hotel
IND	Industrial	OLI	Other Library
OOA	Other Outdoor Active Recreation	OME	Other Medical
OOP	Other Outdoor Passive Recreation	OPW	Other Place of Worship
OCC	Other Child Care	OPB	Other Public Building