



This document is uncontrolled
when printed.

INLAND MARTINUS RAIL



WAGGA YARD AND EDMONDSON STREET – CONSTRUCTION NOISE AND VIBRATION IMPACT STATEMENT ADDENDUM

A2I | Albury to Illabo

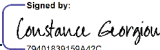

CONTRACT NUMBER: 0052

PROJECT DOCUMENT NUMBER:


6-0052-210-EEC-W7-AS-0001_ADD

**A21 | ALBURY TO ILLABO
WAGGA YARD AND EDMONDSON STREET – CONSTRUCTION NOISE AND VIBRATION IMPACT STATEMENT ADDENDUM**

Document Control

DOCUMENT TITLE:	Wagga Yard and Edmondson Street – Construction Noise and Vibration Impact Statement Addendum		
DOCUMENT OWNER:	Chris Standing – Environment, Approvals and Sustainability Manager (A2P)		
PREPARED BY:	Constance Georgiou	TITLE:	Environmental Approvals Advisor
SIGNATURE:	 <small>Signed by: Constance Georgiou 79401830159A42C</small>		DATE: 02/04/2026
REVIEWED BY:	Steven Dando	TITLE:	Environmental Approvals Advisor
SIGNATURE:	 <small>Signed by: Steven Dando 1A164E16009D443</small>		DATE: 02/04/2026

Approved by

NAME	TITLE	SIGNATURE	DATE
Chris Standing	Environment, Approvals and Sustainability Manager (A2P)	 <small>DocuSigned by: Chris Standing B00B0822192140F</small>	02/04/2026

Revision History

REVISION	REVISION DATE	AMENDMENT	DATE TO CLIENT
A	19/03/2026	Issued for review	19/03/2026
0	02/04/2026	Issued for use	02/04/2026

Disclaimer: This document has been prepared by Martinus. Use of this document shall be subject to the terms of the relevant contract with Martinus. The electronic file of this current revision is the controlled copy. This file is stored on Martinus' server located at Head Office, Unit 1, 23-27 Waratah St, Kirrawee, NSW.

This document is the property of and contains proprietary information owned by Martinus. No permission is granted to publish, reproduce, transmit or disclose to another party, any information contained in this document, in whole or in part, without prior written permission from the issuing authority.

For the purpose of this document, Martinus refers to the Martinus Group of companies.

This document is uncontrolled when printed.

TABLE OF CONTENTS

GLOSSARY	4
1 INTRODUCTION	5
1.1 Purpose of this Addendum	5
2 NOISE ASSESSMENT	7
2.1 Wagga Yard – site establishment (W.001)	7
2.2 Wagga Yard – compound operation (W.002)	8
2.3 Wagga Yard – signalling works (W.008A)	10
3 VIBRATION ASSESSMENT	11
3.1 Wagga Yard – site establishment (W.001)	11
3.2 Wagga Yard – compound operation (W.002)	11
3.3 Wagga Yard – signalling works (W.008A)	11
4 CONCLUSION	12
4.1 Mitigation and management measures.....	12
4.2 Additional mitigation measures.....	12
APPENDICES	15
APPENDIX A	16
SLR Predict (W.001) – Noise.....	16
APPENDIX B	17
SLR Predict (W.002) – Noise.....	17
APPENDIX C	18
SLR Predict (W.008A) – Noise	18

LIST OF TABLES

Table 1: Definitions	4
Table 2: Work scenario description.....	7
Table 3: Exceedance comparisons for W.001	8
Table 4: Exceedance comparisons for W.002	9
Table 5: Exceedance comparisons for W.008A	10

LIST OF FIGURES

Figure 1: Revised work area for W.001 and W.002 (CNVIS Addendum).....	5
Figure 2: Additional work area for W.008A (CNVIS Addendum).....	6
Figure 3: Additional mitigation measures matrix – noise.....	13
Figure 4: Additional mitigation measures matrix – vibration.....	14
Figure 5: Additional mitigation measures matrix – notes	14

GLOSSARY

Specific terms and acronyms used throughout this plan are listed and described in Table 1 below.

TABLE 1: DEFINITIONS

TERM	DEFINITION
A2I	Albury to Illabo section of the Inland Rail project
ADT	Articulated Dump Truck
CNVIS	Construction Noise and Vibration Impact Statement
CNVIS Addendum	This document
EWP	Elevated Work Platform
km	Kilometres
m	Metres
NML	Noise Management Level
OOH	Out-of-hours
Project	Albury to Illabo project approved under section 5.19 of the EP&A Act on 8 October 2024, as modified on 13 August 2025
RBL	Rating Background Level
SLR Predict	A2I noise and vibration management tool
T	Tonnes
Wagga Yard	Wagga Yard clearances enhancement site
Wagga Yard and Edmondson Street CNVIS; the endorsed CNVIS	Wagga Yard and Edmondson Street Construction Noise and Vibration Impact Statement (Doc No. 6-0052-210-EEC-W7-AS-0001)
W.001	Work Scenario 1 – Site Establishment
W.002	Work Scenario 2 – Compound Operation
W.008A	Work Scenario 8A – Signalling Works

1 INTRODUCTION

1.1 Purpose of this Addendum

This Construction Noise and Vibration Impact Statement Addendum (CNVIS Addendum) has been prepared to identify and assess the additional work areas required to support and enable the wider scope of activities associated with the Wagga Yard clearances site enhancement (Wagga Yard) works. This CNVIS Addendum will form part of the endorsed Wagga Yard and Edmondson Street CNVIS (Doc No: 6-0052-210-EEC-W7-AS-0001) (endorsed CNVIS).

This CNVIS Addendum should be reviewed in conjunction with the endorsed CNVIS, including adopted rating background levels (RBLs), noise management levels (NMLs) and assessment criteria in accordance with the Infrastructure Approval (SSI-10055). Figure 1 and Figure 2 below identifies the work areas assessed in this CNVIS Addendum.



FIGURE 1: REVISED WORK AREA FOR W.001 AND W.002 (CNVIS ADDENDUM)

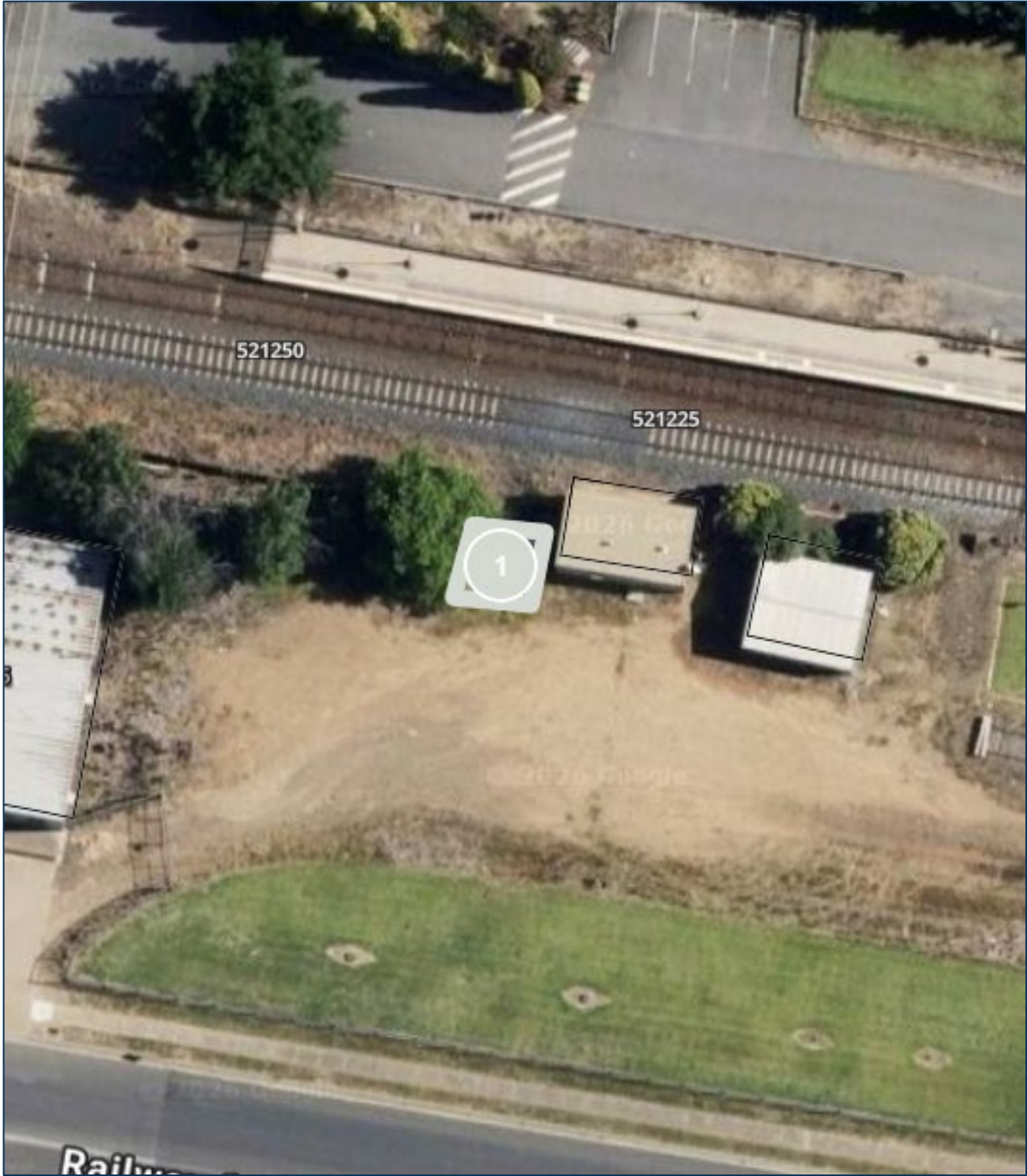


FIGURE 2: ADDITIONAL WORK AREA FOR W.008A (CNVIS ADDENDUM)

2 NOISE ASSESSMENT

The potential construction noise levels from the proposed works have been predicted using SLR Predict, the A2I project-specific noise and vibration tool. This CNVIS Addendum assesses the work scenarios identified in Table 2.

TABLE 2: WORK SCENARIO DESCRIPTION

ID	Scenario	Description	Total Lw
Wagga Yard			
W.001	Site establishment	<ul style="list-style-type: none"> ▪ Site compound delivery and set up ▪ Access road, laydown and parking areas construction 	▪ 115
W.002	Compound operation	<ul style="list-style-type: none"> ▪ Operation of the site compound ▪ Operation of laydown and parking areas ▪ Delivery of materials/equipment 	▪ 116
W.008A	Signalling works	<ul style="list-style-type: none"> ▪ Access to enable installation of signalling infrastructure 	▪ 108

2.1 Wagga Yard – site establishment (W.001)

2.1.1 Scope

The additional work area required for W.001, forms part of the wider scope associated at Wagga Yard and will enable site establishment works. This CNVIS addendum has assessed the revised work area which consists of the work area identified in the endorsed CNVIS and additional work area identified during internal reviews and in the Wagga Precinct Consistency Assessment (Doc no: 6-0052-210-EAP-W0-AS-0001).

The revised work area has been assessed using SLR Predict, A2I noise and vibration management tool, with the following noted:

Plant and equipment

- 1x Articulated dump truck (ADT)
- 1x Crane (mobile)
- 1x Elevated work platform (EWP)
- 1x Excavator - slasher
- 1x Front end loader
- 1x Generator
- 3x Hand tools (electric)
- 5x Light vehicles
- 1x Roller - static
- 1x Tractor - slasher
- 2x Truck – medium rigid truck (20T)
- 2x Truck and dogs
- 1x Water cart

Construction hours

- Standard approved hours:
 - 7am to 6pm Monday to Friday, inclusive
 - 7am to 6pm Saturday
- Day Out-of-Hours (OOH):
 - 8am to 6pm Sunday and public holidays

2.1.2 Assessment

The revised work area has been assessed utilising SLR Predict. The plant and equipment list (as noted above) has been considered as a worst-case scenario within a 15-minute assessment period. The operating time (utilisation %) of each plant and equipment is representative to site working conditions.

2.1.3 Results

The SLR Predict results are presented in Appendix A, for daytime out of hours, as the most affected period.

Table 3 provides a summary of the exceedances identified through various assessment. It compares the following:

- W.001 exceedances identified in the endorsed CNVIS
- W.001 exceedances assessed in the SLR Predict results for the revised work area (shown in Figure 1)

TABLE 3: EXCEEDANCE COMPARISONS FOR W.001

ASSESSMENT RESULTS (DAYTIME OOH)	NUMBER OF RESIDENTIAL RECEIVERS WITH NML EXCEEDANCE	
	CNVIS – W.001	SLR Predict – W.001 (revised work area)
Total Lw (dBA)	115	115
Noticeable (1-5 dB)	54	101
Clearly Audible (6-15 dB)	56	109
Moderately Intrusive (16-25 dB)	17	33
Highly Intrusive (>25 dB)	0	0

Table 3 shows an overall increase in the intensity of the impacts, with an increased number of receivers experiencing noticeable (1-5 dB), clearly audible (6-15 dB), moderately intrusive (16-25 dB) and highly intrusive (>25 dB) impacts. The increase is most likely due to the revised work area compared to the work area in the endorsed CNVIS.

2.2 Wagga Yard – compound operation (W.002)

2.2.1 Scope

The additional work area required for W.002, forms part of the wider scope associated at Wagga Yard and will enable site operational works. This CNVIS addendum has assessed the revised work area which consists of the work area identified in the endorsed CNVIS and additional work area identified during internal reviews and in the Wagga Precinct Consistency Assessment (Doc no: 6-0052-210-EAP-W0-AS-0001).

The revised work area has been assessed using SLR Predict, A21 noise and vibration management tool, with the following noted:

Plant and equipment

- 1x Compressor
- 1x Crane – franna (20T)
- 1x Front end loader
- 1x Generator
- 1x Hand tools – electric
- 15x Light vehicles
- 2x Truck – medium rigid (20T)
- 6x Truck and dogs
- 1x Truck – vacuum
- 1x Water cart

Construction hours

- Standard approved hours:
 - 7am to 6pm Monday to Friday, inclusive
 - 7am to 6pm Saturday
- Day Out-of-Hours (OOH):
 - 8am to 6pm Sunday and public holidays
- Evening OOH:
 - 6pm to 10pm Monday to Sunday (including Public Holidays)
- Night OOH:
 - 10pm to 7am Monday to Saturday
 - 10pm to 8am Sunday (including Public Holidays)

2.2.2 Assessment

The revised work area has been assessed utilising SLR Predict. The plant and equipment list (as noted above) has been considered as a worst-case scenario within a 15-minute assessment period. The operating time (utilisation %) of each plant and equipment is representative to site working conditions.

2.2.3 Results

The SLR Predict results are presented in Appendix B, for night-time out of hours, as the most affected period.

Table 4 provides a summary of the exceedances identified through various assessment. It compares the following:

- W.002 exceedances identified in the endorsed CNVIS
- W.002 exceedances assessed in the SLR Predict results for the revised work area (shown in Figure 1)

TABLE 4: EXCEEDANCE COMPARISONS FOR W.002

ASSESSMENT RESULTS (DAYTIME OOH)	NUMBER OF RESIDENTIAL RECEIVERS WITH NML EXCEEDANCE	
	CNVIS – W.002	SLR Predict – W.002 (revised work area)
Total Lw (dBA)	113	116
Noticeable (1-5 dB)	196	303
Clearly Audible (6-15 dB)	135	183
Moderately Intrusive (16-25 dB)	50	141
Highly Intrusive (>25 dB)	17	38
Above Sleep Disturbance	314	268
Above Sleep Awake	67	52

Table 4 shows an increase in the number of receivers experiencing clearly audible (6-15), noticeable (1-5 dB), moderately intrusive (16-25 dB), and highly intrusive (>25 dB). However, a slight decrease in the number of receivers experiencing above sleep disturbance and above sleep awake impacts. The sound power level (Lw) has also increased, this can also be attributed to the amended plant/equipment list.

2.3 Wagga Yard – signalling works (W.008A)

2.3.1 Scope

The additional work area required for W.008, forms part of the wider scope associated at Wagga Yard and will enable signalling installation works. This CNVIS addendum has assessed the additional work area which consists of the work area identified in the Wagga Precinct Consistency Assessment (Doc no: 6-0052-210-EAP-W0-AS-0001).

The additional work area has been assessed using SLR Predict, A21 noise and vibration management tool, with the following noted:

Plant and equipment

- 3x Hand tools (electric)
- 3x Light vehicles

Construction hours

- Standard approved hours:
 - 7am to 6pm Monday to Friday, inclusive
 - 7am to 6pm Saturday
- Day Out-of-Hours (OOH):
 - 8am to 6pm Sunday and public holidays

2.3.2 Assessment

The additional work area has been assessed utilising SLR Predict. The plant and equipment list (as noted above) has been considered as a worst-case scenario within a 15-minute assessment period. The operating time (utilisation %) of each plant and equipment is representative to site working conditions.

2.3.3 Results

The SLR Predict results are presented in Appendix C, for daytime out of hours, as the most affected period.

Table 5 provides a summary of the exceedances identified through various assessment. It compares the following:

- W.008 exceedances identified in the endorsed CNVIS
- W.008A exceedances assessed in the SLR Predict results for the additional work area (shown in Figure 1)

TABLE 5: EXCEEDANCE COMPARISONS FOR W.008A

ASSESSMENT RESULTS (DAYTIME OOH)	NUMBER OF RESIDENTIAL RECEIVERS WITH NML EXCEEDANCE	
	CNVIS – W.008	SLR Predict – W.008A (additional work area)
Total Lw (dBA)	112	108
Noticeable (1-5 dB)	26	5
Clearly Audible (6-15 dB)	21	9
Moderately Intrusive (16-25 dB)	0	0
Highly Intrusive (>25 dB)	0	0

Table 5 shows an overall decrease in the number of receivers experiencing clearly audible (6-15 dB), noticeable (1-5 dB), moderately intrusive (16-25 dB), and highly intrusive (>25 dB). All affected receivers identified in this CNVIS Addendum have also been identified in the endorsed CNVIS, with no additional impacts expected.

3 VIBRATION ASSESSMENT

3.1 Wagga Yard – site establishment (W.001)

There will be no vibration-intensive plant and equipment utilised for W.001; therefore, there are no expected vibration impacts, and a vibration assessment will not be required for W.001.

3.2 Wagga Yard – compound operation (W.002)

There will be no vibration-intensive plant and equipment utilised for W.002; therefore, there are no expected vibration impacts, and a vibration assessment will not be required for W.002.

3.3 Wagga Yard – signalling works (W.008A)

There will be no vibration-intensive plant and equipment utilised for W.008A; therefore, there are no expected vibration impacts, and a vibration assessment will not be required for W.008A.

4 CONCLUSION

4.1 Mitigation and management measures

As this is an addendum to the endorsed CNVIS for Wagga Yard and Edmondson Street, the same mitigation and management measures apply as noted in Section 8 of the endorsed CNVIS.

4.2 Additional mitigation measures

As noted in Figure 3 to Figure 5 below and under Appendices A to C, the SLR Predict noise and vibration results include a section on all applicable additional mitigation measures. These additional mitigation measures will be implemented where appropriate.

Airborne Noise - Additional Mitigation Measures Matrix				
Time Period	Exceedance of NML	Perception	Duration	Communication Category/Management Measure
OOHW Daytime Period Sunday 7am - 6pm (including public holidays)	<5	Noticeable	Any	CO1
	5 - 15	Clearly audible	Any	CO1
	16 - 25	Moderately intrusive	Any	CO1, CO2
	>25	Highly intrusive	Any	CO1, CO2
OOHW Evening Period Monday - Sunday 6pm - 10pm (including public holidays)	<5	Noticeable	Any	CO1
	5 - 15	Clearly audible	Any	CO1
	16 - 25	Moderately intrusive	Any	CO1, CO2
	>25	Highly intrusive	Any	CO1, CO2
			>2 consecutive rest periods	CO1, CO2, RO
OOHW Night Period Monday - Sunday 10pm - 7am (including public holidays)	<5	Noticeable	Any	CO1
	5 - 15	Clearly audible	Any	CO1
	16 - 25	Moderately intrusive	Any	CO1, CO2
			>2 consecutive sleep periods	CO1, CO2, RO, AO
	>25	Highly intrusive	Any	CO1, CO2, RO
			>2 consecutive sleep periods	CO1, CO2, RO, AO, AltA

FIGURE 3: ADDITIONAL MITIGATION MEASURES MATRIX – NOISE

Vibration - Additional Mitigation Measures Matrix			
Time Period	Duration	Exceedance of 'preferred' value	Exceedance of 'maximum' value
OOHW Daytime Period	Any	CO1, CO2	CO1, CO2, RO
Sunday 8am-6pm			
OOHW Evening Period	Any	CO1, CO2	CO1, CO2, RO
Mon-Sun 6pm-10pm			
OOHW Night Period	Any	CO1, CO2, RO	CO1, CO2, RO, AltA
Mon-Sat 10pm-7am			
Sun 10pm-8am			

FIGURE 4: ADDITIONAL MITIGATION MEASURES MATRIX – VIBRATION

Additional Mitigation Measures			
Measure	Abbreviation		
Communication (Category 1) ¹	CO1		
Communication (Category 2) ²	CO2		
Respite Offer ³	RO		
Alternative Accommodation	AltA		
Agreement with Owners	AO		
<p>Note 1: CO1: Communication to provide information on the OOHW via methods such as letter box drop, email, newsletter, media advertisements and/ or website prior to the works commencing.</p> <p>Note 2: CO2: Communication should be personalised (e.g. door knock, meeting, telephone call). Contact with these residents should commence early to enable feedback to be considered by the proposal.</p> <p>Note 3: RO are not applicable to non-residential receivers. RO may comprise of pre-purchased movie tickets, dinner vouchers or similar. RO can also be provided by limiting high noise generating works and allowing at least a one-hour respite period between blocks of work. Where possible, the timing of this respite should be discussed with the impacted community.</p>			
Receiver Types			
Code	Description	Code	Description
RES	Residential	OED	Other Educational
COM	Commercial	OHO	Other Hotel
IND	Industrial	OLI	Other Library
OOA	Other Outdoor Active Recreation	OME	Other Medical
OOP	Other Outdoor Passive Recreation	OPW	Other Place of Worship
OCC	Other Child Care	OPB	Other Public Building

FIGURE 5: ADDITIONAL MITIGATION MEASURES MATRIX – NOTES



APPENDICES



APPENDIX A

SLR Predict (W.001) – Noise



Construction Noise and Vibration Impact Statement (CNVIS)

This report presents the outcomes of detailed noise/vibration modelling relating to specific construction activities proposed on site in accordance with the methodology outlined in the *Construction Noise and Vibration Management Plan (CNVMP)* and overarching *Construction Noise and Vibration Impact Statement (CNVIS)*.

Prior to detailed noise/vibration modelling being undertaken, work activities are reviewed and considered in relation to industry best practice, consistent with the requirements of the CNVMP. Consideration is first given to eliminating the noise/vibration emissions so far as reasonably practicable. Where elimination is not practicable, efforts are made to reduce the risk as far as practical by implementing noise and vibration management measures as outlined in the overarching CNVIS and CNVMP.

Examples of these measures include selecting the quietest equipment and processes to complete the works, considering staging and periods of respite to minimise prolonged periods of noise and vibration exposure, and maximising distances between construction activities and sensitive receivers.

Consultation with Affected Receivers

In accordance with CoA E78, the CNVIS must include specific mitigation measures identified through consultation with affected sensitive land user(s) and the mitigation measures must be implemented for the duration of the Work. Details of this consultation are provided in the overarching CNVIS for each enhancement site.

Predicted Noise Levels

The assessment presents the highest predicted level at each receiver building, considering predictions at each floor and façade from all potential work areas. The assessment is generally considered conservative as the calculations assume several items of construction equipment are in use at the same time within each work area. The assessment uses 'realistic worst-case' scenarios to determine the impacts from the noisiest 15-minute period that is likely to occur for each work scenario.

Assessment Details

Author Name	
Author Email	noiseassessments@martinus.com.au
Author Organisation	Martinus Rail
Project Name	A2I - Albury to Illabo
Assessment Name	Wagga/Edmondson ADD1 - W.001
Assessment Number	418
Stage	A2I Construction
Permit Number	N/A
Start Date	2026-04-06
End Date	2026-04-06
Assessment Period	Day - out of hours

Equipment Details

Plant/Equipment	Equipment Sound Power Level (Unadjusted), dBA	Number of Units	Temporary Noise Barrier
1: W.001 (Height: Ground)	Total: 115		
Articulated Dump Truck 25% operation	109	1	No
Crane (mobile) 30% operation	104	1	No
Elevated Work Platform 25% operation	97	1	No
Excavator - Slasher 50% operation	105	1	No
Front End Loader 50% operation	113	1	No
Generator - attenuated 100% operation	92	1	No
Hand tools (electric) 75% operation	102	3	No

Note 1: Equipment classed as 'annoying' in the *Interim Construction Noise Guideline (DECC, 2009)* include a 5 dB correction.

Note 2: Equipment sound power levels consider the mitigation measures outlined in the overarching CNVIS to provide mitigated results.

Equipment Details

Plant/Equipment	Equipment Sound Power Level (Unadjusted), dBA	Number of Units	Temporary Noise Barrier
Light Vehicle (accelerating) 25% operation	95	5	No
Roller - static 100% operation	107	1	No
Tractor - Slasher 50% operation	108	1	No
Truck - medium rigid (20T) 25% operation	103	2	No
Truck - road truck/ truck & dog (30T) 25% operation	108	2	No
Water Cart 75% operation	105	1	No

Note 1: Equipment classed as 'annoying' in the *Interim Construction Noise Guideline (DECC, 2009)* include a 5 dB correction.

Note 2: Equipment sound power levels consider the mitigation measures outlined in the overarching CNVIS to provide mitigated results.

Assessment Results



Assessment Results

		Residential	Non-Residential
	Highly Intrusive	0 property	0 property
	Moderately Intrusive	33 properties	1 property
	Clearly Audible	109 properties	13 properties
	Noticeable	101 properties	1 property

Legend

	Project Boundary
	Work Areas
	Barriers

Results by Receiver

Address	Land Use	Noise Catchment Area	Construction Noise Management Level, dBA	Predicted Noise Level, dBA	Predicted Noise Level Above Noise Management Level, dB	Noise Category
58 RAILWAY ST, TURVEY PARK NSW 2650	RES	NCA11	53	78	25	Moderately Intrusive
60 RAILWAY ST, TURVEY PARK NSW 2650	RES	NCA11	53	77	24	Moderately Intrusive
62 RAILWAY ST, TURVEY PARK NSW 2650	RES	NCA11	53	77	24	Moderately Intrusive
56 RAILWAY ST, TURVEY PARK NSW 2650	RES	NCA11	53	76	23	Moderately Intrusive
66 RAILWAY ST, TURVEY PARK NSW 2650	RES	NCA11	53	74	21	Moderately Intrusive
80 RAILWAY ST, TURVEY PARK NSW 2650	RES	NCA11	53	74	21	Moderately Intrusive

Results by Receiver

Address	Land Use	Noise Catchment Area	Construction Noise Management Level, dBA	Predicted Noise Level, dBA	Predicted Noise Level Above Noise Management Level, dB	Noise Category
54 RAILWAY ST, TURVEY PARK NSW 2650	RES	NCA11	53	73	20	Moderately Intrusive
68 RAILWAY ST, TURVEY PARK NSW 2650	RES	NCA11	53	73	20	Moderately Intrusive
74 RAILWAY ST, TURVEY PARK NSW 2650	RES	NCA11	53	73	20	Moderately Intrusive
21 FLINDERS ST, TURVEY PARK NSW 2650	RES	NCA11	53	73	20	Moderately Intrusive
86 RAILWAY ST, TURVEY PARK NSW 2650	RES	NCA11	53	73	20	Moderately Intrusive
88 RAILWAY ST, TURVEY PARK NSW 2650	RES	NCA11	53	73	20	Moderately Intrusive
90 RAILWAY ST, TURVEY PARK NSW 2650	RES	NCA11	53	73	20	Moderately Intrusive
92 RAILWAY ST, TURVEY PARK NSW 2650	RES	NCA11	53	73	20	Moderately Intrusive
3 ERIN ST, TURVEY PARK NSW 2650	RES	NCA11	53	73	20	Moderately Intrusive
50 RAILWAY ST, TURVEY PARK NSW 2650	RES	NCA11	53	72	19	Moderately Intrusive
72 RAILWAY ST, TURVEY PARK NSW 2650	RES	NCA11	53	72	19	Moderately Intrusive
76 RAILWAY ST, TURVEY PARK NSW 2650	RES	NCA11	53	72	19	Moderately Intrusive
3/21 COLLINS ST, TURVEY PARK NSW 2650	RES	NCA11	53	72	19	Moderately Intrusive
82 RAILWAY ST, TURVEY PARK NSW 2650	RES	NCA11	53	72	19	Moderately Intrusive

Results by Receiver

Address	Land Use	Noise Catchment Area	Construction Noise Management Level, dBA	Predicted Noise Level, dBA	Predicted Noise Level Above Noise Management Level, dB	Noise Category
84 RAILWAY ST, TURVEY PARK NSW 2650	RES	NCA11	53	72	19	Moderately Intrusive
5 ERIN ST, TURVEY PARK NSW 2650	RES	NCA11	53	72	19	Moderately Intrusive
14 STATION PL, WAGGA WAGGA NSW 2650	RES	NCA11	53	72	19	Moderately Intrusive
48 RAILWAY ST, TURVEY PARK NSW 2650	RES	NCA11	53	71	18	Moderately Intrusive
52 RAILWAY ST, TURVEY PARK NSW 2650	RES	NCA11	53	71	18	Moderately Intrusive
94 RAILWAY ST, TURVEY PARK NSW 2650	RES	NCA11	53	71	18	Moderately Intrusive
1 ERIN ST, TURVEY PARK NSW 2650	RES	NCA11	53	71	18	Moderately Intrusive
23 FLINDERS ST, TURVEY PARK NSW 2650	RES	NCA11	53	70	17	Moderately Intrusive
96 RAILWAY ST, TURVEY PARK NSW 2650	RES	NCA11	53	70	17	Moderately Intrusive
7 ERIN ST, TURVEY PARK NSW 2650	RES	NCA11	53	70	17	Moderately Intrusive
6 STATION PL, WAGGA WAGGA NSW 2650	OCC	NCA11	45	62	17	Moderately Intrusive
4 RICHARD ST, TURVEY PARK NSW 2650	RES	NCA11	53	69	16	Moderately Intrusive
2 RICHARD ST, TURVEY PARK NSW 2650	RES	NCA11	53	69	16	Moderately Intrusive
9 ERIN ST, TURVEY PARK NSW 2650	RES	NCA11	53	69	16	Moderately Intrusive

Results by Receiver

Address	Land Use	Noise Catchment Area	Construction Noise Management Level, dBA	Predicted Noise Level, dBA	Predicted Noise Level Above Noise Management Level, dB	Noise Category
46 RAILWAY ST, TURVEY PARK NSW 2650	RES	NCA11	53	68	15	Clearly Audible
23 COLLINS ST, TURVEY PARK NSW 2650	RES	NCA11	53	68	15	Clearly Audible
19 STATION PL, WAGGA WAGGA NSW 2650	COM	NCA11	70	85	15	Clearly Audible
19 STATION PL, WAGGA WAGGA NSW 2650	COM	NCA11	70	85	15	Clearly Audible
19 STATION PL, WAGGA WAGGA NSW 2650	COM	NCA11	70	85	15	Clearly Audible
19 STATION PL, WAGGA WAGGA NSW 2650	COM	NCA11	70	85	15	Clearly Audible
2-4 STATION PL, WAGGA WAGGA NSW 2650	OCC	NCA11	45	60	15	Clearly Audible
1 RICHARD ST, TURVEY PARK NSW 2650	RES	NCA11	53	67	14	Clearly Audible
44 RAILWAY ST, TURVEY PARK NSW 2650	RES	NCA11	53	67	14	Clearly Audible
11 ERIN ST, TURVEY PARK NSW 2650	RES	NCA11	53	67	14	Clearly Audible
6-10 STATION PL, WAGGA WAGGA NSW 2650	OCC	NCA11	45	59	14	Clearly Audible
6 RICHARD ST, TURVEY PARK NSW 2650	RES	NCA11	53	66	13	Clearly Audible
2 YOUNG ST, TURVEY PARK NSW 2650	RES	NCA11	53	66	13	Clearly Audible
42 RAILWAY ST, TURVEY PARK NSW 2650	RES	NCA11	53	66	13	Clearly Audible

Results by Receiver

Address	Land Use	Noise Catchment Area	Construction Noise Management Level, dBA	Predicted Noise Level, dBA	Predicted Noise Level Above Noise Management Level, dB	Noise Category
29 FLINDERS ST, TURVEY PARK NSW 2650	RES	NCA11	53	66	13	Clearly Audible
27 FLINDERS ST, TURVEY PARK NSW 2650	RES	NCA11	53	66	13	Clearly Audible
26 FLINDERS ST, TURVEY PARK NSW 2650	RES	NCA11	53	66	13	Clearly Audible
27 COLLINS ST, TURVEY PARK NSW 2650	RES	NCA11	53	66	13	Clearly Audible
30 COLLINS ST, TURVEY PARK NSW 2650	RES	NCA11	53	66	13	Clearly Audible
25 COLLINS ST, TURVEY PARK NSW 2650	RES	NCA11	53	66	13	Clearly Audible
19 STATION PL, WAGGA WAGGA NSW 2650	COM	NCA11	70	83	13	Clearly Audible
3 YOUNG ST, TURVEY PARK NSW 2650	RES	NCA11	53	65	12	Clearly Audible
5 RICHARD ST, TURVEY PARK NSW 2650	RES	NCA11	53	65	12	Clearly Audible
1 YOUNG ST, TURVEY PARK NSW 2650	RES	NCA11	53	65	12	Clearly Audible
3 RICHARD ST, TURVEY PARK NSW 2650	RES	NCA11	53	65	12	Clearly Audible
31 FLINDERS ST, TURVEY PARK NSW 2650	RES	NCA11	53	65	12	Clearly Audible
29 COLLINS ST, TURVEY PARK NSW 2650	RES	NCA11	53	65	12	Clearly Audible
25 MACLEAY ST, TURVEY PARK NSW 2650	RES	NCA11	53	65	12	Clearly Audible

Results by Receiver

Address	Land Use	Noise Catchment Area	Construction Noise Management Level, dBA	Predicted Noise Level, dBA	Predicted Noise Level Above Noise Management Level, dB	Noise Category
COUNTRYLINK TRAVEL CENTRE 20 STATION PL, WAGGA WAGGA NSW 2650	COM	NCA11	70	82	12	Clearly Audible
140 EDWARD ST, WAGGA WAGGA NSW 2650	OED	NCA11	55	67	12	Clearly Audible
7 RICHARD ST, TURVEY PARK NSW 2650	RES	NCA11	53	64	11	Clearly Audible
8 RICHARD ST, TURVEY PARK NSW 2650	RES	NCA11	53	64	11	Clearly Audible
40 RAILWAY ST, TURVEY PARK NSW 2650	RES	NCA11	53	64	11	Clearly Audible
38 RAILWAY ST, TURVEY PARK NSW 2650	RES	NCA11	53	64	11	Clearly Audible
35 COLLINS ST, TURVEY PARK NSW 2650	RES	NCA11	53	64	11	Clearly Audible
36 COLLINS ST, TURVEY PARK NSW 2650	RES	NCA11	53	64	11	Clearly Audible
31 COLLINS ST, TURVEY PARK NSW 2650	RES	NCA11	53	64	11	Clearly Audible
28 FLINDERS ST, TURVEY PARK NSW 2650	RES	NCA11	53	64	11	Clearly Audible
33 COLLINS ST, TURVEY PARK NSW 2650	RES	NCA11	53	64	11	Clearly Audible
27 MACLEAY ST, TURVEY PARK NSW 2650	RES	NCA11	53	64	11	Clearly Audible
32 COLLINS ST, TURVEY PARK NSW 2650	RES	NCA11	53	64	11	Clearly Audible

Results by Receiver

Address	Land Use	Noise Catchment Area	Construction Noise Management Level, dBA	Predicted Noise Level, dBA	Predicted Noise Level Above Noise Management Level, dB	Noise Category
1 KINDRA LANE, TURVEY PARK NSW 2650	RES	NCA11	53	64	11	Clearly Audible
23 MACLEAY ST, TURVEY PARK NSW 2650	RES	NCA11	53	64	11	Clearly Audible
2 MACLEAY ST, TURVEY PARK NSW 2650	RES	NCA11	53	64	11	Clearly Audible
5 YOUNG ST, TURVEY PARK NSW 2650	RES	NCA11	53	63	10	Clearly Audible
9 RICHARD ST, TURVEY PARK NSW 2650	RES	NCA11	53	63	10	Clearly Audible
10 RICHARD ST, TURVEY PARK NSW 2650	RES	NCA11	53	63	10	Clearly Audible
33 FLINDERS ST, TURVEY PARK NSW 2650	RES	NCA11	53	63	10	Clearly Audible
37 COLLINS ST, TURVEY PARK NSW 2650	RES	NCA11	53	63	10	Clearly Audible
30 FLINDERS ST, TURVEY PARK NSW 2650	RES	NCA11	53	63	10	Clearly Audible
140 EDWARD ST, WAGGA WAGGA NSW 2650	OED	NCA11	55	65	10	Clearly Audible
32-34 FLINDERS ST, TURVEY PARK NSW 2650	RES	NCA11	53	63	10	Clearly Audible
14 RICHARD ST, TURVEY PARK NSW 2650	RES	NCA11	53	62	9	Clearly Audible
11 RICHARD ST, TURVEY PARK NSW 2650	RES	NCA11	53	62	9	Clearly Audible
35 FLINDERS ST, TURVEY PARK NSW 2650	RES	NCA11	53	62	9	Clearly Audible

Results by Receiver

Address	Land Use	Noise Catchment Area	Construction Noise Management Level, dBA	Predicted Noise Level, dBA	Predicted Noise Level Above Noise Management Level, dB	Noise Category
4 YOUNG ST, TURVEY PARK NSW 2650	RES	NCA11	53	62	9	Clearly Audible
39 COLLINS ST, TURVEY PARK NSW 2650	RES	NCA11	53	62	9	Clearly Audible
1 KILDARE ST, TURVEY PARK NSW 2650	RES	NCA11	53	62	9	Clearly Audible
1 KILDARE ST, TURVEY PARK NSW 2650	RES	NCA11	53	62	9	Clearly Audible
6 STATION PL, WAGGA WAGGA NSW 2650	OCC	NCA11	45	54	9	Clearly Audible
37-39 FLINDERS ST, TURVEY PARK NSW 2650	RES	NCA11	53	61	8	Clearly Audible
41 COLLINS ST, TURVEY PARK NSW 2650	RES	NCA11	53	61	8	Clearly Audible
6 YOUNG ST, TURVEY PARK NSW 2650	RES	NCA11	53	61	8	Clearly Audible
36 FLINDERS ST, TURVEY PARK NSW 2650	RES	NCA11	53	61	8	Clearly Audible
40 COLLINS ST, TURVEY PARK NSW 2650	RES	NCA11	53	61	8	Clearly Audible
38 COLLINS ST, TURVEY PARK NSW 2650	RES	NCA11	53	61	8	Clearly Audible
28 RAILWAY ST, TURVEY PARK NSW 2650	RES	NCA11	53	61	8	Clearly Audible
29 MACLEAY ST, TURVEY PARK NSW 2650	RES	NCA11	53	61	8	Clearly Audible
8 MACLEAY ST, TURVEY PARK NSW 2650	RES	NCA11	53	61	8	Clearly Audible

Results by Receiver

Address	Land Use	Noise Catchment Area	Construction Noise Management Level, dBA	Predicted Noise Level, dBA	Predicted Noise Level Above Noise Management Level, dB	Noise Category
6 MACLEAY ST, TURVEY PARK NSW 2650	RES	NCA11	53	61	8	Clearly Audible
4 MACLEAY ST, TURVEY PARK NSW 2650	RES	NCA11	53	61	8	Clearly Audible
1 KILDARE ST, TURVEY PARK NSW 2650	RES	NCA11	53	61	8	Clearly Audible
BUILDING 1 UNIT 102 1 FLINDERS ST, WAGGA WAGGA NSW 2650	RES	NCA11	53	61	8	Clearly Audible
2 LITTLE BEST ST, WAGGA WAGGA NSW 2650	RES	NCA11	53	61	8	Clearly Audible
4 LITTLE BEST ST, WAGGA WAGGA NSW 2650	RES	NCA11	53	61	8	Clearly Audible
6 LITTLE BEST ST, WAGGA WAGGA NSW 2650	RES	NCA11	53	61	8	Clearly Audible
46 FLINDERS ST, TURVEY PARK NSW 2650	RES	NCA11	53	60	7	Clearly Audible
17 HILL ST, TURVEY PARK NSW 2650	RES	NCA11	53	60	7	Clearly Audible
16 RICHARD ST, TURVEY PARK NSW 2650	RES	NCA11	53	60	7	Clearly Audible
7 YOUNG ST, TURVEY PARK NSW 2650	RES	NCA11	53	60	7	Clearly Audible
48 COLLINS ST, TURVEY PARK NSW 2650	RES	NCA11	53	60	7	Clearly Audible
10 YOUNG ST, TURVEY PARK NSW 2650	RES	NCA11	53	60	7	Clearly Audible

Results by Receiver

Address	Land Use	Noise Catchment Area	Construction Noise Management Level, dBA	Predicted Noise Level, dBA	Predicted Noise Level Above Noise Management Level, dB	Noise Category
41 FLINDERS ST, TURVEY PARK NSW 2650	RES	NCA11	53	60	7	Clearly Audible
8 YOUNG ST, TURVEY PARK NSW 2650	RES	NCA11	53	60	7	Clearly Audible
43 COLLINS ST, TURVEY PARK NSW 2650	RES	NCA11	53	60	7	Clearly Audible
44 COLLINS ST, TURVEY PARK NSW 2650	RES	NCA11	53	60	7	Clearly Audible
38 FLINDERS ST, TURVEY PARK NSW 2650	RES	NCA11	53	60	7	Clearly Audible
3 BURWOOD ST, TURVEY PARK NSW 2650	RES	NCA11	53	60	7	Clearly Audible
5 BURWOOD ST, TURVEY PARK NSW 2650	RES	NCA11	53	60	7	Clearly Audible
42 COLLINS ST, TURVEY PARK NSW 2650	RES	NCA11	53	60	7	Clearly Audible
33 MACLEAY ST, TURVEY PARK NSW 2650	RES	NCA11	53	60	7	Clearly Audible
31 MACLEAY ST, TURVEY PARK NSW 2650	RES	NCA11	53	60	7	Clearly Audible
36 RAILWAY ST, TURVEY PARK NSW 2650	RES	NCA11	53	60	7	Clearly Audible
10 MACLEAY ST, TURVEY PARK NSW 2650	RES	NCA11	53	60	7	Clearly Audible
BUILDING 3 UNIT 105 1 FLINDERS ST, WAGGA WAGGA NSW 2650	RES	NCA11	53	60	7	Clearly Audible

Results by Receiver

Address	Land Use	Noise Catchment Area	Construction Noise Management Level, dBA	Predicted Noise Level, dBA	Predicted Noise Level Above Noise Management Level, dB	Noise Category
4 DONNELLY AV, WAGGA WAGGA NSW 2650	RES	NCA11	53	60	7	Clearly Audible
6 DONNELLY AV, WAGGA WAGGA NSW 2650	RES	NCA11	53	60	7	Clearly Audible
8 DONNELLY AV, WAGGA WAGGA NSW 2650	RES	NCA11	53	60	7	Clearly Audible
1 FLINDERS ST, WAGGA WAGGA NSW 2650	RES	NCA11	53	60	7	Clearly Audible
8 LITTLE BEST ST, WAGGA WAGGA NSW 2650	RES	NCA11	53	60	7	Clearly Audible
156 EDWARD ST, WAGGA WAGGA NSW 2650	RES	NCA11	53	60	7	Clearly Audible
140 EDWARD ST, WAGGA WAGGA NSW 2650	OED	NCA11	55	62	7	Clearly Audible
51 COLLINS ST, TURVEY PARK NSW 2650	RES	NCA11	53	59	6	Clearly Audible
9 YOUNG ST, TURVEY PARK NSW 2650	RES	NCA11	53	59	6	Clearly Audible
18 RICHARD ST, TURVEY PARK NSW 2650	RES	NCA11	53	59	6	Clearly Audible
44 FLINDERS ST, TURVEY PARK NSW 2650	RES	NCA11	53	59	6	Clearly Audible
25 HILL ST, TURVEY PARK NSW 2650	RES	NCA11	53	59	6	Clearly Audible
47 COLLINS ST, TURVEY PARK NSW 2650	RES	NCA11	53	59	6	Clearly Audible
12 YOUNG ST, TURVEY PARK NSW 2650	RES	NCA11	53	59	6	Clearly Audible

Results by Receiver

Address	Land Use	Noise Catchment Area	Construction Noise Management Level, dBA	Predicted Noise Level, dBA	Predicted Noise Level Above Noise Management Level, dB	Noise Category
43 FLINDERS ST, TURVEY PARK NSW 2650	RES	NCA11	53	59	6	Clearly Audible
42 FLINDERS ST, TURVEY PARK NSW 2650	RES	NCA11	53	59	6	Clearly Audible
45 COLLINS ST, TURVEY PARK NSW 2650	RES	NCA11	53	59	6	Clearly Audible
40 FLINDERS ST, TURVEY PARK NSW 2650	RES	NCA11	53	59	6	Clearly Audible
12 RICHARD ST, TURVEY PARK NSW 2650	RES	NCA11	53	59	6	Clearly Audible
37 MACLEAY ST, TURVEY PARK NSW 2650	RES	NCA11	53	59	6	Clearly Audible
3A BEAUTY POINT AV, TURVEY PARK NSW 2650	RES	NCA11	53	59	6	Clearly Audible
35 MACLEAY ST, TURVEY PARK NSW 2650	RES	NCA11	53	59	6	Clearly Audible
14 MACLEAY ST, TURVEY PARK NSW 2650	RES	NCA11	53	59	6	Clearly Audible
26 RAILWAY ST, TURVEY PARK NSW 2650	RES	NCA11	53	59	6	Clearly Audible
12 MACLEAY ST, TURVEY PARK NSW 2650	RES	NCA11	53	59	6	Clearly Audible
18 STATION PL, WAGGA WAGGA NSW 2650	COM	NCA11	70	76	6	Clearly Audible
10 DONNELLY AV, WAGGA WAGGA NSW 2650	RES	NCA11	53	59	6	Clearly Audible
51 FLINDERS ST, TURVEY PARK NSW 2650	RES	NCA11	53	58	5	Noticeable

Results by Receiver

Address	Land Use	Noise Catchment Area	Construction Noise Management Level, dBA	Predicted Noise Level, dBA	Predicted Noise Level Above Noise Management Level, dB	Noise Category
22 HILL ST, TURVEY PARK NSW 2650	RES	NCA11	53	58	5	Noticeable
13 YOUNG ST, TURVEY PARK NSW 2650	RES	NCA11	53	58	5	Noticeable
1/49 FLINDERS ST, TURVEY PARK NSW 2650	RES	NCA11	53	58	5	Noticeable
47 FLINDERS ST, TURVEY PARK NSW 2650	RES	NCA11	53	58	5	Noticeable
11 YOUNG ST, TURVEY PARK NSW 2650	RES	NCA11	53	58	5	Noticeable
7 HILL ST, TURVEY PARK NSW 2650	RES	NCA11	53	58	5	Noticeable
11 HILL ST, TURVEY PARK NSW 2650	RES	NCA11	53	58	5	Noticeable
49 COLLINS ST, TURVEY PARK NSW 2650	RES	NCA11	53	58	5	Noticeable
23 HILL ST, TURVEY PARK NSW 2650	RES	NCA11	53	58	5	Noticeable
50 COLLINS ST, TURVEY PARK NSW 2650	RES	NCA11	53	58	5	Noticeable
9 BEAUTY POINT AV, TURVEY PARK NSW 2650	RES	NCA11	53	58	5	Noticeable
1 BURWOOD ST, TURVEY PARK NSW 2650	RES	NCA11	53	58	5	Noticeable
18 MACLEAY ST, TURVEY PARK NSW 2650	RES	NCA11	53	58	5	Noticeable
16 MACLEAY ST, TURVEY PARK NSW 2650	RES	NCA11	53	58	5	Noticeable

Results by Receiver

Address	Land Use	Noise Catchment Area	Construction Noise Management Level, dBA	Predicted Noise Level, dBA	Predicted Noise Level Above Noise Management Level, dB	Noise Category
23 MACLEAY ST, TURVEY PARK NSW 2650	RES	NCA11	53	58	5	Noticeable
2 DONNELLY AV, WAGGA WAGGA NSW 2650	RES	NCA11	53	58	5	Noticeable
12 DONNELLY AV, WAGGA WAGGA NSW 2650	RES	NCA11	53	58	5	Noticeable
ERIN EARTH 1 KILDARE ST, TURVEY PARK NSW 2650	OED	NCA11	55	60	5	Noticeable
58B FLINDERS ST, TURVEY PARK NSW 2650	RES	NCA11	53	57	4	Noticeable
20 HILL ST, TURVEY PARK NSW 2650	RES	NCA11	53	57	4	Noticeable
53 FLINDERS ST, TURVEY PARK NSW 2650	RES	NCA11	53	57	4	Noticeable
55 COLLINS ST, TURVEY PARK NSW 2650	RES	NCA11	53	57	4	Noticeable
53 COLLINS ST, TURVEY PARK NSW 2650	RES	NCA11	53	57	4	Noticeable
48 FLINDERS ST, TURVEY PARK NSW 2650	RES	NCA11	53	57	4	Noticeable
4 BEAUTY POINT AV, TURVEY PARK NSW 2650	RES	NCA11	53	57	4	Noticeable
54 COLLINS ST, TURVEY PARK NSW 2650	RES	NCA11	53	57	4	Noticeable
2 BEAUTY POINT AV, TURVEY PARK NSW 2650	RES	NCA11	53	57	4	Noticeable

Results by Receiver

Address	Land Use	Noise Catchment Area	Construction Noise Management Level, dBA	Predicted Noise Level, dBA	Predicted Noise Level Above Noise Management Level, dB	Noise Category
2 BURWOOD ST, TURVEY PARK NSW 2650	RES	NCA11	53	57	4	Noticeable
41 MACLEAY ST, TURVEY PARK NSW 2650	RES	NCA11	53	57	4	Noticeable
39 MACLEAY ST, TURVEY PARK NSW 2650	RES	NCA11	53	57	4	Noticeable
22 MACLEAY ST, TURVEY PARK NSW 2650	RES	NCA11	53	57	4	Noticeable
7 BEAUTY POINT AV, TURVEY PARK NSW 2650	RES	NCA11	53	57	4	Noticeable
20 MACLEAY ST, TURVEY PARK NSW 2650	RES	NCA11	53	57	4	Noticeable
22 RAILWAY ST, TURVEY PARK NSW 2650	RES	NCA11	53	57	4	Noticeable
24 RAILWAY ST, TURVEY PARK NSW 2650	RES	NCA11	53	57	4	Noticeable
5 EDMONDSON ST, TURVEY PARK NSW 2650	RES	NCA11	53	57	4	Noticeable
3 EDMONDSON ST, TURVEY PARK NSW 2650	RES	NCA11	53	57	4	Noticeable
1 EDMONDSON ST, TURVEY PARK NSW 2650	RES	NCA11	53	57	4	Noticeable
14 BEAUTY POINT AV, TURVEY PARK NSW 2650	RES	NCA11	53	56	3	Noticeable
55 FLINDERS ST, TURVEY PARK NSW 2650	RES	NCA11	53	56	3	Noticeable
60 COLLINS ST, TURVEY PARK NSW 2650	RES	NCA11	53	56	3	Noticeable

Results by Receiver

Address	Land Use	Noise Catchment Area	Construction Noise Management Level, dBA	Predicted Noise Level, dBA	Predicted Noise Level Above Noise Management Level, dB	Noise Category
59 COLLINS ST, TURVEY PARK NSW 2650	RES	NCA11	53	56	3	Noticeable
57 COLLINS ST, TURVEY PARK NSW 2650	RES	NCA11	53	56	3	Noticeable
52 FLINDERS ST, TURVEY PARK NSW 2650	RES	NCA11	53	56	3	Noticeable
58 COLLINS ST, TURVEY PARK NSW 2650	RES	NCA11	53	56	3	Noticeable
1 HILL ST, TURVEY PARK NSW 2650	RES	NCA11	53	56	3	Noticeable
47 MACLEAY ST, TURVEY PARK NSW 2650	RES	NCA11	53	56	3	Noticeable
50 FLINDERS ST, TURVEY PARK NSW 2650	RES	NCA11	53	56	3	Noticeable
1/56 COLLINS ST, TURVEY PARK NSW 2650	RES	NCA11	53	56	3	Noticeable
9 HILL ST, TURVEY PARK NSW 2650	RES	NCA11	53	56	3	Noticeable
15 HILL ST, TURVEY PARK NSW 2650	RES	NCA11	53	56	3	Noticeable
43 MACLEAY ST, TURVEY PARK NSW 2650	RES	NCA11	53	56	3	Noticeable
26 MACLEAY ST, TURVEY PARK NSW 2650	RES	NCA11	53	56	3	Noticeable
4 BURWOOD ST, TURVEY PARK NSW 2650	RES	NCA11	53	56	3	Noticeable
6 BURWOOD ST, TURVEY PARK NSW 2650	RES	NCA11	53	56	3	Noticeable

Results by Receiver

Address	Land Use	Noise Catchment Area	Construction Noise Management Level, dBA	Predicted Noise Level, dBA	Predicted Noise Level Above Noise Management Level, dB	Noise Category
24 MACLEAY ST, TURVEY PARK NSW 2650	RES	NCA11	53	56	3	Noticeable
5 BEAUTY POINT AV, TURVEY PARK NSW 2650	RES	NCA11	53	56	3	Noticeable
6/36 COLLINS ST, TURVEY PARK NSW 2650	RES	NCA11	53	56	3	Noticeable
158 EDWARD ST, WAGGA WAGGA NSW 2650	RES	NCA11	53	56	3	Noticeable
2 PETER ST, WAGGA WAGGA NSW 2650	RES	NCA11	53	56	3	Noticeable
4 PETER ST, WAGGA WAGGA NSW 2650	RES	NCA11	53	56	3	Noticeable
6 PETER ST, WAGGA WAGGA NSW 2650	RES	NCA11	53	56	3	Noticeable
20 PETER ST, WAGGA WAGGA NSW 2650	RES	NCA11	53	56	3	Noticeable
18 BEAUTY POINT AV, TURVEY PARK NSW 2650	RES	NCA11	53	55	2	Noticeable
2/11 COLEMAN ST, TURVEY PARK NSW 2650	RES	NCA11	53	55	2	Noticeable
1/11 COLEMAN ST, TURVEY PARK NSW 2650	RES	NCA11	53	55	2	Noticeable
16 BEAUTY POINT AV, TURVEY PARK NSW 2650	RES	NCA11	53	55	2	Noticeable
60A FLINDERS ST, TURVEY PARK NSW 2650	RES	NCA11	53	55	2	Noticeable
13 RICHARD ST, TURVEY PARK NSW 2650	RES	NCA11	53	55	2	Noticeable

Results by Receiver

Address	Land Use	Noise Catchment Area	Construction Noise Management Level, dBA	Predicted Noise Level, dBA	Predicted Noise Level Above Noise Management Level, dB	Noise Category
63 COLLINS ST, TURVEY PARK NSW 2650	RES	NCA11	53	55	2	Noticeable
57 FLINDERS ST, TURVEY PARK NSW 2650	RES	NCA11	53	55	2	Noticeable
61 COLLINS ST, TURVEY PARK NSW 2650	RES	NCA11	53	55	2	Noticeable
56 FLINDERS ST, TURVEY PARK NSW 2650	RES	NCA11	53	55	2	Noticeable
10 HILL ST, TURVEY PARK NSW 2650	RES	NCA11	53	55	2	Noticeable
54 FLINDERS ST, TURVEY PARK NSW 2650	RES	NCA11	53	55	2	Noticeable
26 HILL ST, TURVEY PARK NSW 2650	RES	NCA11	53	55	2	Noticeable
28 HILL ST, TURVEY PARK NSW 2650	RES	NCA11	53	55	2	Noticeable
8 BEAUTY POINT AV, TURVEY PARK NSW 2650	RES	NCA11	53	55	2	Noticeable
3 HILL ST, TURVEY PARK NSW 2650	RES	NCA11	53	55	2	Noticeable
5 HILL ST, TURVEY PARK NSW 2650	RES	NCA11	53	55	2	Noticeable
30 MACLEAY ST, TURVEY PARK NSW 2650	RES	NCA11	53	55	2	Noticeable
6 BEAUTY POINT AV, TURVEY PARK NSW 2650	RES	NCA11	53	55	2	Noticeable
13 HILL ST, TURVEY PARK NSW 2650	RES	NCA11	53	55	2	Noticeable

Results by Receiver

Address	Land Use	Noise Catchment Area	Construction Noise Management Level, dBA	Predicted Noise Level, dBA	Predicted Noise Level Above Noise Management Level, dB	Noise Category
28 MACLEAY ST, TURVEY PARK NSW 2650	RES	NCA11	53	55	2	Noticeable
8 PETER ST, WAGGA WAGGA NSW 2650	RES	NCA11	53	55	2	Noticeable
10 PETER ST, WAGGA WAGGA NSW 2650	RES	NCA11	53	55	2	Noticeable
24 BEAUTY POINT AV, TURVEY PARK NSW 2650	RES	NCA11	53	54	1	Noticeable
22 BEAUTY POINT AV, TURVEY PARK NSW 2650	RES	NCA11	53	54	1	Noticeable
13 COLEMAN ST, TURVEY PARK NSW 2650	RES	NCA11	53	54	1	Noticeable
61 FLINDERS ST, TURVEY PARK NSW 2650	RES	NCA11	53	54	1	Noticeable
2 HILL ST, TURVEY PARK NSW 2650	RES	NCA11	53	54	1	Noticeable
23 BEAUTY POINT AV, TURVEY PARK NSW 2650	RES	NCA11	53	54	1	Noticeable
51-53 MACLEAY ST, TURVEY PARK NSW 2650	RES	NCA11	53	54	1	Noticeable
10 BEAUTY POINT AV, TURVEY PARK NSW 2650	RES	NCA11	53	54	1	Noticeable
49 MACLEAY ST, TURVEY PARK NSW 2650	RES	NCA11	53	54	1	Noticeable
32 MACLEAY ST, TURVEY PARK NSW 2650	RES	NCA11	53	54	1	Noticeable
3/36 COLLINS ST, TURVEY PARK NSW 2650	RES	NCA11	53	54	1	Noticeable

Results by Receiver

Address	Land Use	Noise Catchment Area	Construction Noise Management Level, dBA	Predicted Noise Level, dBA	Predicted Noise Level Above Noise Management Level, dB	Noise Category
7 EDMONDSON ST, TURVEY PARK NSW 2650	RES	NCA11	53	54	1	Noticeable
157 EDWARD ST, WAGGA WAGGA NSW 2650	RES	NCA11	53	54	1	Noticeable
12 PETER ST, WAGGA WAGGA NSW 2650	RES	NCA11	53	54	1	Noticeable
14 PETER ST, WAGGA WAGGA NSW 2650	RES	NCA11	53	54	1	Noticeable

Recommended Mitigation Measures

This assessment has been conducted with regard to the relevant CNVIS and CNVMP. To manage noise and vibration impacts, project specific mitigation measures may be considered such as reviewing construction staging methodology to identify opportunities to schedule intensive works during less sensitive time periods and by providing a clear process for community engagement and complaints. Likewise, the requirements and actionable items within the overarching CNVIS and CNVMP should be considered and adopted where appropriate. Following the consideration of project specific noise mitigation measures, additional noise mitigation measures to be explored are described in the Inland Rail NSW Construction Noise and Vibration Framework (CNVF) and summarised below.

Airborne Noise - Additional Mitigation Measures Matrix				
Time Period	Exceedance of NML	Perception	Duration	Communication Category/Management Measure
OOHW Daytime Period Sunday 7am - 6pm (including public holidays)	<5	Noticeable	Any	CO1
	5 - 15	Clearly audible	Any	CO1
	16 - 25	Moderately intrusive	Any	CO1, CO2
	>25	Highly intrusive	Any	CO1, CO2
OOHW Evening Period Monday - Sunday 6pm - 10pm (including public holidays)	<5	Noticeable	Any	CO1
	5 - 15	Clearly audible	Any	CO1
	16 - 25	Moderately intrusive	Any	CO1, CO2
	>25	Highly intrusive	Any >2 consecutive rest periods	CO1, CO2
OOHW Night Period Monday - Sunday 10pm - 7am (including public holidays)	<5	Noticeable	Any	CO1
	5 - 15	Clearly audible	Any	CO1
	16 - 25	Moderately intrusive	Any	CO1, CO2
			>2 consecutive sleep periods	CO1, CO2, RO, AO
	>25	Highly intrusive	Any >2 consecutive sleep periods	CO1, CO2, RO, AO, AltA

Vibration - Additional Mitigation Measures Matrix

Time Period	Duration	Exceedance of 'preferred' value	Exceedance of 'maximum' value
OOHW Daytime Period Sunday 8am-6pm	Any	CO1, CO2	CO1, CO2, RO
OOHW Evening Period Mon-Sun 6pm-10pm	Any	CO1, CO2	CO1, CO2, RO
OOHW Night Period Mon-Sat 10pm-7am Sun 10pm-8am	Any	CO1, CO2, RO	CO1, CO2, RO, AltA

Additional Mitigation Measures

Measure	Abbreviation
Communication (Category 1) ¹	CO1
Communication (Category 2) ²	CO2
Respite Offer ³	RO
Alternative Accommodation	AltA
Agreement with Owners	AO

Note 1: CO1: Communication to provide information on the OOHW via methods such as letter box drop, email, newsletter, media advertisements and/ or website prior to the works commencing.

Note 2: CO2: Communication should be personalised (e.g. door knock, meeting, telephone call). Contact with these residents should commence early to enable feedback to be considered by the proposal.

Note 3: RO are not applicable to non-residential receivers. RO may comprise of pre-purchased movie tickets, dinner vouchers or similar. RO can also be provided by limiting high noise generating works and allowing at least a one-hour respite period between blocks of work. Where possible, the timing of this respite should be discussed with the impacted community.

Receiver Types

Code	Description	Code	Description
RES	Residential	OED	Other Educational
COM	Commercial	OHO	Other Hotel
IND	Industrial	OLI	Other Library
OOA	Other Outdoor Active Recreation	OME	Other Medical
OOP	Other Outdoor Passive Recreation	OPW	Other Place of Worship
OCC	Other Child Care	OPB	Other Public Building



APPENDIX B

SLR Predict (W.002) – Noise



Construction Noise and Vibration Impact Statement (CNVIS)

This report presents the outcomes of detailed noise/vibration modelling relating to specific construction activities proposed on site in accordance with the methodology outlined in the *Construction Noise and Vibration Management Plan (CNVMP)* and overarching *Construction Noise and Vibration Impact Statement (CNVIS)*.

Prior to detailed noise/vibration modelling being undertaken, work activities are reviewed and considered in relation to industry best practice, consistent with the requirements of the CNVMP. Consideration is first given to eliminating the noise/vibration emissions so far as reasonably practicable. Where elimination is not practicable, efforts are made to reduce the risk as far as practical by implementing noise and vibration management measures as outlined in the overarching CNVIS and CNVMP.

Examples of these measures include selecting the quietest equipment and processes to complete the works, considering staging and periods of respite to minimise prolonged periods of noise and vibration exposure, and maximising distances between construction activities and sensitive receivers.

Consultation with Affected Receivers

In accordance with CoA E78, the CNVIS must include specific mitigation measures identified through consultation with affected sensitive land user(s) and the mitigation measures must be implemented for the duration of the Work. Details of this consultation are provided in the overarching CNVIS for each enhancement site.

Predicted Noise Levels

The assessment presents the highest predicted level at each receiver building, considering predictions at each floor and façade from all potential work areas. The assessment is generally considered conservative as the calculations assume several items of construction equipment are in use at the same time within each work area. The assessment uses 'realistic worst-case' scenarios to determine the impacts from the noisiest 15-minute period that is likely to occur for each work scenario.

Assessment Details

Author Name	
Author Email	noiseassessments@martinus.com.au
Author Organisation	Martinus Rail
Project Name	A2I - Albury to Illabo
Assessment Name	Wagga/Edmondson ADD1 - W.002
Assessment Number	418
Stage	A2I Construction
Permit Number	N/A
Start Date	2026-04-06
End Date	2026-04-06
Assessment Period	Night - out of hours

Equipment Details

Plant/Equipment	Equipment Sound Power Level (Unadjusted), dBA	Number of Units	Temporary Noise Barrier
1: W.002 (Height: Ground)	Total: 116		
Compressor 100% operation	109	1	No
Crane Franna (20 tonne) 30% operation	98	1	No
Front End Loader 50% operation	113	1	No
Generator - attenuated 100% operation	92	1	No
Hand tools (electric) 75% operation	102	1	No
Light Vehicle (accelerating) 25% operation	95	15	No
Truck - medium rigid (20T) 25% operation	103	2	No

Note 1: Equipment classed as 'annoying' in the *Interim Construction Noise Guideline (DECC, 2009)* include a 5 dB correction.

Note 2: Equipment sound power levels consider the mitigation measures outlined in the overarching CNVIS to provide mitigated results.

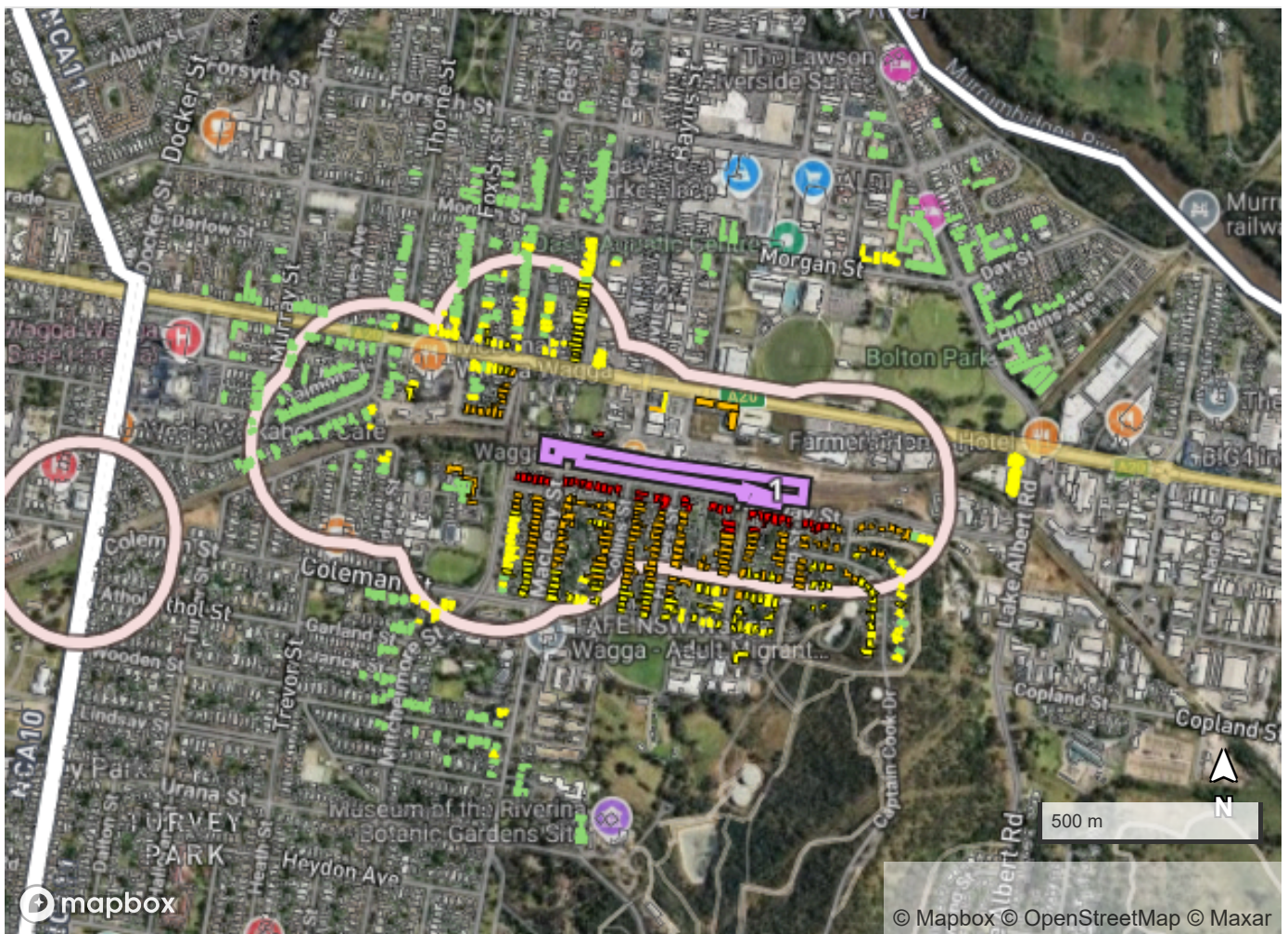
Equipment Details

Plant/Equipment	Equipment Sound Power Level (Unadjusted), dBA	Number of Units	Temporary Noise Barrier
Truck - road truck/ truck & dog (30T) 25% operation	108	6	No
Water Cart 75% operation	105	1	No
Truck - vacuum (NDD or non-destructive digger) 100% operation	109	1	No

Note 1: Equipment classed as 'annoying' in the *Interim Construction Noise Guideline (DECC, 2009)* include a 5 dB correction.




Note 2: Equipment sound power levels consider the mitigation measures outlined in the overarching CNVIS to provide mitigated results.

Assessment Results



	Residential	Non-Residential
 Highly Intrusive	38 properties	0 property
 Moderately Intrusive	141 properties	1 property

Assessment Results

	Clearly Audible	183 properties	3 properties
	Noticeable	303 properties	9 properties
	Above Sleep Disturbance	268 properties	0 property
	Above Sleep Awake	52 properties	0 property

Legend

	Project Boundary
	Work Areas
	Barriers

Results by Receiver

Address	Land Use	Noise Catchment Area	Construction Noise Management Level, dBA	Predicted Noise Level, dBA	Predicted Noise Level Above Noise Management Level, dB	Noise Category
58 RAILWAY ST, TURVEY PARK NSW 2650	RES	NCA11	42	79	37	Highly Intrusive Above Sleep Dist Above Sleep Awake
60 RAILWAY ST, TURVEY PARK NSW 2650	RES	NCA11	42	78	36	Highly Intrusive Above Sleep Dist Above Sleep Awake
62 RAILWAY ST, TURVEY PARK NSW 2650	RES	NCA11	42	78	36	Highly Intrusive Above Sleep Dist Above Sleep Awake

Results by Receiver

Address	Land Use	Noise Catchment Area	Construction Noise Management Level, dBA	Predicted Noise Level, dBA	Predicted Noise Level Above Noise Management Level, dB	Noise Category
56 RAILWAY ST, TURVEY PARK NSW 2650	RES	NCA11	42	76	34	Highly Intrusive Above Sleep Dist Above Sleep Awake
66 RAILWAY ST, TURVEY PARK NSW 2650	RES	NCA11	42	75	33	Highly Intrusive Above Sleep Dist Above Sleep Awake
80 RAILWAY ST, TURVEY PARK NSW 2650	RES	NCA11	42	75	33	Highly Intrusive Above Sleep Dist Above Sleep Awake
54 RAILWAY ST, TURVEY PARK NSW 2650	RES	NCA11	42	74	32	Highly Intrusive Above Sleep Dist Above Sleep Awake
68 RAILWAY ST, TURVEY PARK NSW 2650	RES	NCA11	42	74	32	Highly Intrusive Above Sleep Dist Above Sleep Awake
74 RAILWAY ST, TURVEY PARK NSW 2650	RES	NCA11	42	74	32	Highly Intrusive Above Sleep Dist Above Sleep Awake

Results by Receiver

Address	Land Use	Noise Catchment Area	Construction Noise Management Level, dBA	Predicted Noise Level, dBA	Predicted Noise Level Above Noise Management Level, dB	Noise Category
21 FLINDERS ST, TURVEY PARK NSW 2650	RES	NCA11	42	74	32	Highly Intrusive Above Sleep Dist Above Sleep Awake
86 RAILWAY ST, TURVEY PARK NSW 2650	RES	NCA11	42	74	32	Highly Intrusive Above Sleep Dist Above Sleep Awake
88 RAILWAY ST, TURVEY PARK NSW 2650	RES	NCA11	42	74	32	Highly Intrusive Above Sleep Dist Above Sleep Awake
90 RAILWAY ST, TURVEY PARK NSW 2650	RES	NCA11	42	74	32	Highly Intrusive Above Sleep Dist Above Sleep Awake
92 RAILWAY ST, TURVEY PARK NSW 2650	RES	NCA11	42	74	32	Highly Intrusive Above Sleep Dist Above Sleep Awake
3 ERIN ST, TURVEY PARK NSW 2650	RES	NCA11	42	74	32	Highly Intrusive Above Sleep Dist Above Sleep Awake

Results by Receiver

Address	Land Use	Noise Catchment Area	Construction Noise Management Level, dBA	Predicted Noise Level, dBA	Predicted Noise Level Above Noise Management Level, dB	Noise Category
72 RAILWAY ST, TURVEY PARK NSW 2650	RES	NCA11	42	73	31	Highly Intrusive Above Sleep Dist Above Sleep Awake
76 RAILWAY ST, TURVEY PARK NSW 2650	RES	NCA11	42	73	31	Highly Intrusive Above Sleep Dist Above Sleep Awake
3/21 COLLINS ST, TURVEY PARK NSW 2650	RES	NCA11	42	73	31	Highly Intrusive Above Sleep Dist Above Sleep Awake
84 RAILWAY ST, TURVEY PARK NSW 2650	RES	NCA11	42	73	31	Highly Intrusive Above Sleep Dist Above Sleep Awake
5 ERIN ST, TURVEY PARK NSW 2650	RES	NCA11	42	73	31	Highly Intrusive Above Sleep Dist Above Sleep Awake
14 STATION PL, WAGGA WAGGA NSW 2650	RES	NCA11	42	73	31	Highly Intrusive Above Sleep Dist Above Sleep Awake

Results by Receiver

Address	Land Use	Noise Catchment Area	Construction Noise Management Level, dBA	Predicted Noise Level, dBA	Predicted Noise Level Above Noise Management Level, dB	Noise Category
48 RAILWAY ST, TURVEY PARK NSW 2650	RES	NCA11	42	72	30	Highly Intrusive Above Sleep Dist Above Sleep Awake
50 RAILWAY ST, TURVEY PARK NSW 2650	RES	NCA11	42	72	30	Highly Intrusive Above Sleep Dist Above Sleep Awake
52 RAILWAY ST, TURVEY PARK NSW 2650	RES	NCA11	42	72	30	Highly Intrusive Above Sleep Dist Above Sleep Awake
82 RAILWAY ST, TURVEY PARK NSW 2650	RES	NCA11	42	72	30	Highly Intrusive Above Sleep Dist Above Sleep Awake
94 RAILWAY ST, TURVEY PARK NSW 2650	RES	NCA11	42	72	30	Highly Intrusive Above Sleep Dist Above Sleep Awake
1 ERIN ST, TURVEY PARK NSW 2650	RES	NCA11	42	72	30	Highly Intrusive Above Sleep Dist Above Sleep Awake

Results by Receiver

Address	Land Use	Noise Catchment Area	Construction Noise Management Level, dBA	Predicted Noise Level, dBA	Predicted Noise Level Above Noise Management Level, dB	Noise Category
23 FLINDERS ST, TURVEY PARK NSW 2650	RES	NCA11	42	71	29	Highly Intrusive Above Sleep Dist Above Sleep Awake
96 RAILWAY ST, TURVEY PARK NSW 2650	RES	NCA11	42	71	29	Highly Intrusive Above Sleep Dist Above Sleep Awake
7 ERIN ST, TURVEY PARK NSW 2650	RES	NCA11	42	71	29	Highly Intrusive Above Sleep Dist Above Sleep Awake
4 RICHARD ST, TURVEY PARK NSW 2650	RES	NCA11	42	70	28	Highly Intrusive Above Sleep Dist Above Sleep Awake
2 RICHARD ST, TURVEY PARK NSW 2650	RES	NCA11	42	70	28	Highly Intrusive Above Sleep Dist Above Sleep Awake
9 ERIN ST, TURVEY PARK NSW 2650	RES	NCA11	42	70	28	Highly Intrusive Above Sleep Dist Above Sleep Awake

Results by Receiver

Address	Land Use	Noise Catchment Area	Construction Noise Management Level, dBA	Predicted Noise Level, dBA	Predicted Noise Level Above Noise Management Level, dB	Noise Category
46 RAILWAY ST, TURVEY PARK NSW 2650	RES	NCA11	42	69	27	Highly Intrusive Above Sleep Dist Above Sleep Awake
23 COLLINS ST, TURVEY PARK NSW 2650	RES	NCA11	42	69	27	Highly Intrusive Above Sleep Dist Above Sleep Awake
1 RICHARD ST, TURVEY PARK NSW 2650	RES	NCA11	42	68	26	Highly Intrusive Above Sleep Dist Above Sleep Awake
44 RAILWAY ST, TURVEY PARK NSW 2650	RES	NCA11	42	68	26	Highly Intrusive Above Sleep Dist Above Sleep Awake
11 ERIN ST, TURVEY PARK NSW 2650	RES	NCA11	42	68	26	Highly Intrusive Above Sleep Dist Above Sleep Awake
29 FLINDERS ST, TURVEY PARK NSW 2650	RES	NCA11	42	67	25	Moderately Intrusive Above Sleep Dist Above Sleep Awake

Results by Receiver

Address	Land Use	Noise Catchment Area	Construction Noise Management Level, dBA	Predicted Noise Level, dBA	Predicted Noise Level Above Noise Management Level, dB	Noise Category
27 FLINDERS ST, TURVEY PARK NSW 2650	RES	NCA11	42	67	25	Moderately Intrusive Above Sleep Dist Above Sleep Awake
26 FLINDERS ST, TURVEY PARK NSW 2650	RES	NCA11	42	67	25	Moderately Intrusive Above Sleep Dist Above Sleep Awake
27 COLLINS ST, TURVEY PARK NSW 2650	RES	NCA11	42	67	25	Moderately Intrusive Above Sleep Dist Above Sleep Awake
30 COLLINS ST, TURVEY PARK NSW 2650	RES	NCA11	42	67	25	Moderately Intrusive Above Sleep Dist Above Sleep Awake
25 COLLINS ST, TURVEY PARK NSW 2650	RES	NCA11	42	67	25	Moderately Intrusive Above Sleep Dist Above Sleep Awake
3 YOUNG ST, TURVEY PARK NSW 2650	RES	NCA11	42	66	24	Moderately Intrusive Above Sleep Dist

Results by Receiver

Address	Land Use	Noise Catchment Area	Construction Noise Management Level, dBA	Predicted Noise Level, dBA	Predicted Noise Level Above Noise Management Level, dB	Noise Category
5 RICHARD ST, TURVEY PARK NSW 2650	RES	NCA11	42	66	24	Moderately Intrusive Above Sleep Dist Above Sleep Awake
1 YOUNG ST, TURVEY PARK NSW 2650	RES	NCA11	42	66	24	Moderately Intrusive Above Sleep Dist
6 RICHARD ST, TURVEY PARK NSW 2650	RES	NCA11	42	66	24	Moderately Intrusive Above Sleep Dist Above Sleep Awake
3 RICHARD ST, TURVEY PARK NSW 2650	RES	NCA11	42	66	24	Moderately Intrusive Above Sleep Dist Above Sleep Awake
2 YOUNG ST, TURVEY PARK NSW 2650	RES	NCA11	42	66	24	Moderately Intrusive Above Sleep Dist Above Sleep Awake
31 FLINDERS ST, TURVEY PARK NSW 2650	RES	NCA11	42	66	24	Moderately Intrusive Above Sleep Dist Above Sleep Awake

Results by Receiver

Address	Land Use	Noise Catchment Area	Construction Noise Management Level, dBA	Predicted Noise Level, dBA	Predicted Noise Level Above Noise Management Level, dB	Noise Category
42 RAILWAY ST, TURVEY PARK NSW 2650	RES	NCA11	42	66	24	Moderately Intrusive Above Sleep Dist Above Sleep Awake
29 COLLINS ST, TURVEY PARK NSW 2650	RES	NCA11	42	66	24	Moderately Intrusive Above Sleep Dist Above Sleep Awake
25 MACLEAY ST, TURVEY PARK NSW 2650	RES	NCA11	42	66	24	Moderately Intrusive Above Sleep Dist Above Sleep Awake
8 RICHARD ST, TURVEY PARK NSW 2650	RES	NCA11	42	65	23	Moderately Intrusive Above Sleep Dist
40 RAILWAY ST, TURVEY PARK NSW 2650	RES	NCA11	42	65	23	Moderately Intrusive Above Sleep Dist
38 RAILWAY ST, TURVEY PARK NSW 2650	RES	NCA11	42	65	23	Moderately Intrusive Above Sleep Dist
35 COLLINS ST, TURVEY PARK NSW 2650	RES	NCA11	42	65	23	Moderately Intrusive Above Sleep Dist
36 COLLINS ST, TURVEY PARK NSW 2650	RES	NCA11	42	65	23	Moderately Intrusive Above Sleep Dist

Results by Receiver

Address	Land Use	Noise Catchment Area	Construction Noise Management Level, dBA	Predicted Noise Level, dBA	Predicted Noise Level Above Noise Management Level, dB	Noise Category
31 COLLINS ST, TURVEY PARK NSW 2650	RES	NCA11	42	65	23	Moderately Intrusive Above Sleep Dist
28 FLINDERS ST, TURVEY PARK NSW 2650	RES	NCA11	42	65	23	Moderately Intrusive Above Sleep Dist
33 COLLINS ST, TURVEY PARK NSW 2650	RES	NCA11	42	65	23	Moderately Intrusive Above Sleep Dist
32 COLLINS ST, TURVEY PARK NSW 2650	RES	NCA11	42	65	23	Moderately Intrusive Above Sleep Dist
1 KINDRA LANE, TURVEY PARK NSW 2650	RES	NCA11	42	65	23	Moderately Intrusive Above Sleep Dist
23 MACLEAY ST, TURVEY PARK NSW 2650	RES	NCA11	42	65	23	Moderately Intrusive Above Sleep Dist
2 MACLEAY ST, TURVEY PARK NSW 2650	RES	NCA11	42	65	23	Moderately Intrusive Above Sleep Dist
5 YOUNG ST, TURVEY PARK NSW 2650	RES	NCA11	42	64	22	Moderately Intrusive Above Sleep Dist
10 RICHARD ST, TURVEY PARK NSW 2650	RES	NCA11	42	64	22	Moderately Intrusive Above Sleep Dist
7 RICHARD ST, TURVEY PARK NSW 2650	RES	NCA11	42	64	22	Moderately Intrusive Above Sleep Dist

Results by Receiver

Address	Land Use	Noise Catchment Area	Construction Noise Management Level, dBA	Predicted Noise Level, dBA	Predicted Noise Level Above Noise Management Level, dB	Noise Category
33 FLINDERS ST, TURVEY PARK NSW 2650	RES	NCA11	42	64	22	Moderately Intrusive Above Sleep Dist
37 COLLINS ST, TURVEY PARK NSW 2650	RES	NCA11	42	64	22	Moderately Intrusive Above Sleep Dist
30 FLINDERS ST, TURVEY PARK NSW 2650	RES	NCA11	42	64	22	Moderately Intrusive Above Sleep Dist
27 MACLEAY ST, TURVEY PARK NSW 2650	RES	NCA11	42	64	22	Moderately Intrusive Above Sleep Dist
32-34 FLINDERS ST, TURVEY PARK NSW 2650	RES	NCA11	42	64	22	Moderately Intrusive Above Sleep Dist
14 RICHARD ST, TURVEY PARK NSW 2650	RES	NCA11	42	63	21	Moderately Intrusive Above Sleep Dist
11 RICHARD ST, TURVEY PARK NSW 2650	RES	NCA11	42	63	21	Moderately Intrusive Above Sleep Dist
9 RICHARD ST, TURVEY PARK NSW 2650	RES	NCA11	42	63	21	Moderately Intrusive Above Sleep Dist
35 FLINDERS ST, TURVEY PARK NSW 2650	RES	NCA11	42	63	21	Moderately Intrusive Above Sleep Dist
4 YOUNG ST, TURVEY PARK NSW 2650	RES	NCA11	42	63	21	Moderately Intrusive Above Sleep Dist

Results by Receiver

Address	Land Use	Noise Catchment Area	Construction Noise Management Level, dBA	Predicted Noise Level, dBA	Predicted Noise Level Above Noise Management Level, dB	Noise Category
1 KILDARE ST, TURVEY PARK NSW 2650	RES	NCA11	42	63	21	Moderately Intrusive Above Sleep Dist
37-39 FLINDERS ST, TURVEY PARK NSW 2650	RES	NCA11	42	62	20	Moderately Intrusive Above Sleep Dist
6 YOUNG ST, TURVEY PARK NSW 2650	RES	NCA11	42	62	20	Moderately Intrusive Above Sleep Dist
36 FLINDERS ST, TURVEY PARK NSW 2650	RES	NCA11	42	62	20	Moderately Intrusive Above Sleep Dist
39 COLLINS ST, TURVEY PARK NSW 2650	RES	NCA11	42	62	20	Moderately Intrusive Above Sleep Dist
40 COLLINS ST, TURVEY PARK NSW 2650	RES	NCA11	42	62	20	Moderately Intrusive Above Sleep Dist
38 COLLINS ST, TURVEY PARK NSW 2650	RES	NCA11	42	62	20	Moderately Intrusive Above Sleep Dist
28 RAILWAY ST, TURVEY PARK NSW 2650	RES	NCA11	42	62	20	Moderately Intrusive Above Sleep Dist
29 MACLEAY ST, TURVEY PARK NSW 2650	RES	NCA11	42	62	20	Moderately Intrusive Above Sleep Dist
8 MACLEAY ST, TURVEY PARK NSW 2650	RES	NCA11	42	62	20	Moderately Intrusive Above Sleep Dist

Results by Receiver

Address	Land Use	Noise Catchment Area	Construction Noise Management Level, dBA	Predicted Noise Level, dBA	Predicted Noise Level Above Noise Management Level, dB	Noise Category
6 MACLEAY ST, TURVEY PARK NSW 2650	RES	NCA11	42	62	20	Moderately Intrusive Above Sleep Dist
4 MACLEAY ST, TURVEY PARK NSW 2650	RES	NCA11	42	62	20	Moderately Intrusive Above Sleep Dist
1 KILDARE ST, TURVEY PARK NSW 2650	RES	NCA11	42	62	20	Moderately Intrusive Above Sleep Dist
1 KILDARE ST, TURVEY PARK NSW 2650	RES	NCA11	42	62	20	Moderately Intrusive Above Sleep Dist
BUILDING 1 UNIT 102 1 FLINDERS ST, WAGGA WAGGA NSW 2650	RES	NCA11	42	62	20	Moderately Intrusive Above Sleep Dist
2 LITTLE BEST ST, WAGGA WAGGA NSW 2650	RES	NCA11	42	62	20	Moderately Intrusive Above Sleep Dist
4 LITTLE BEST ST, WAGGA WAGGA NSW 2650	RES	NCA11	42	62	20	Moderately Intrusive Above Sleep Dist
6 LITTLE BEST ST, WAGGA WAGGA NSW 2650	RES	NCA11	42	62	20	Moderately Intrusive Above Sleep Dist
17 HILL ST, TURVEY PARK NSW 2650	RES	NCA11	42	61	19	Moderately Intrusive Above Sleep Dist
16 RICHARD ST, TURVEY PARK NSW 2650	RES	NCA11	42	61	19	Moderately Intrusive Above Sleep Dist

Results by Receiver

Address	Land Use	Noise Catchment Area	Construction Noise Management Level, dBA	Predicted Noise Level, dBA	Predicted Noise Level Above Noise Management Level, dB	Noise Category
7 YOUNG ST, TURVEY PARK NSW 2650	RES	NCA11	42	61	19	Moderately Intrusive Above Sleep Dist
48 COLLINS ST, TURVEY PARK NSW 2650	RES	NCA11	42	61	19	Moderately Intrusive Above Sleep Dist
10 YOUNG ST, TURVEY PARK NSW 2650	RES	NCA11	42	61	19	Moderately Intrusive Above Sleep Dist
41 FLINDERS ST, TURVEY PARK NSW 2650	RES	NCA11	42	61	19	Moderately Intrusive Above Sleep Dist
8 YOUNG ST, TURVEY PARK NSW 2650	RES	NCA11	42	61	19	Moderately Intrusive Above Sleep Dist
43 COLLINS ST, TURVEY PARK NSW 2650	RES	NCA11	42	61	19	Moderately Intrusive Above Sleep Dist
44 COLLINS ST, TURVEY PARK NSW 2650	RES	NCA11	42	61	19	Moderately Intrusive Above Sleep Dist
38 FLINDERS ST, TURVEY PARK NSW 2650	RES	NCA11	42	61	19	Moderately Intrusive Above Sleep Dist
41 COLLINS ST, TURVEY PARK NSW 2650	RES	NCA11	42	61	19	Moderately Intrusive Above Sleep Dist
3 BURWOOD ST, TURVEY PARK NSW 2650	RES	NCA11	42	61	19	Moderately Intrusive Above Sleep Dist

Results by Receiver

Address	Land Use	Noise Catchment Area	Construction Noise Management Level, dBA	Predicted Noise Level, dBA	Predicted Noise Level Above Noise Management Level, dB	Noise Category
5 BURWOOD ST, TURVEY PARK NSW 2650	RES	NCA11	42	61	19	Moderately Intrusive Above Sleep Dist
42 COLLINS ST, TURVEY PARK NSW 2650	RES	NCA11	42	61	19	Moderately Intrusive Above Sleep Dist
33 MACLEAY ST, TURVEY PARK NSW 2650	RES	NCA11	42	61	19	Moderately Intrusive Above Sleep Dist
31 MACLEAY ST, TURVEY PARK NSW 2650	RES	NCA11	42	61	19	Moderately Intrusive Above Sleep Dist
36 RAILWAY ST, TURVEY PARK NSW 2650	RES	NCA11	42	61	19	Moderately Intrusive Above Sleep Dist
10 MACLEAY ST, TURVEY PARK NSW 2650	RES	NCA11	42	61	19	Moderately Intrusive Above Sleep Dist
BUILDING 3 UNIT 105 1 FLINDERS ST, WAGGA WAGGA NSW 2650	RES	NCA11	42	61	19	Moderately Intrusive Above Sleep Dist
4 DONNELLY AV, WAGGA WAGGA NSW 2650	RES	NCA11	42	61	19	Moderately Intrusive Above Sleep Dist
6 DONNELLY AV, WAGGA WAGGA NSW 2650	RES	NCA11	42	61	19	Moderately Intrusive Above Sleep Dist
8 DONNELLY AV, WAGGA WAGGA NSW 2650	RES	NCA11	42	61	19	Moderately Intrusive Above Sleep Dist

Results by Receiver

Address	Land Use	Noise Catchment Area	Construction Noise Management Level, dBA	Predicted Noise Level, dBA	Predicted Noise Level Above Noise Management Level, dB	Noise Category
1 FLINDERS ST, WAGGA WAGGA NSW 2650	RES	NCA11	42	61	19	Moderately Intrusive Above Sleep Dist
8 LITTLE BEST ST, WAGGA WAGGA NSW 2650	RES	NCA11	42	61	19	Moderately Intrusive Above Sleep Dist
156 EDWARD ST, WAGGA WAGGA NSW 2650	RES	NCA11	42	61	19	Moderately Intrusive Above Sleep Dist
46 FLINDERS ST, TURVEY PARK NSW 2650	RES	NCA11	42	60	18	Moderately Intrusive Above Sleep Dist
9 YOUNG ST, TURVEY PARK NSW 2650	RES	NCA11	42	60	18	Moderately Intrusive Above Sleep Dist
18 RICHARD ST, TURVEY PARK NSW 2650	RES	NCA11	42	60	18	Moderately Intrusive Above Sleep Dist
44 FLINDERS ST, TURVEY PARK NSW 2650	RES	NCA11	42	60	18	Moderately Intrusive Above Sleep Dist
25 HILL ST, TURVEY PARK NSW 2650	RES	NCA11	42	60	18	Moderately Intrusive Above Sleep Dist
43 FLINDERS ST, TURVEY PARK NSW 2650	RES	NCA11	42	60	18	Moderately Intrusive Above Sleep Dist
45 COLLINS ST, TURVEY PARK NSW 2650	RES	NCA11	42	60	18	Moderately Intrusive Above Sleep Dist

Results by Receiver

Address	Land Use	Noise Catchment Area	Construction Noise Management Level, dBA	Predicted Noise Level, dBA	Predicted Noise Level Above Noise Management Level, dB	Noise Category
40 FLINDERS ST, TURVEY PARK NSW 2650	RES	NCA11	42	60	18	Moderately Intrusive Above Sleep Dist
12 RICHARD ST, TURVEY PARK NSW 2650	RES	NCA11	42	60	18	Moderately Intrusive Above Sleep Dist
37 MACLEAY ST, TURVEY PARK NSW 2650	RES	NCA11	42	60	18	Moderately Intrusive Above Sleep Dist
3A BEAUTY POINT AV, TURVEY PARK NSW 2650	RES	NCA11	42	60	18	Moderately Intrusive Above Sleep Dist
35 MACLEAY ST, TURVEY PARK NSW 2650	RES	NCA11	42	60	18	Moderately Intrusive Above Sleep Dist
14 MACLEAY ST, TURVEY PARK NSW 2650	RES	NCA11	42	60	18	Moderately Intrusive Above Sleep Dist
26 RAILWAY ST, TURVEY PARK NSW 2650	RES	NCA11	42	60	18	Moderately Intrusive Above Sleep Dist
12 MACLEAY ST, TURVEY PARK NSW 2650	RES	NCA11	42	60	18	Moderately Intrusive Above Sleep Dist
10 DONNELLY AV, WAGGA WAGGA NSW 2650	RES	NCA11	42	60	18	Moderately Intrusive Above Sleep Dist
51 FLINDERS ST, TURVEY PARK NSW 2650	RES	NCA11	42	59	17	Moderately Intrusive Above Sleep Dist

Results by Receiver

Address	Land Use	Noise Catchment Area	Construction Noise Management Level, dBA	Predicted Noise Level, dBA	Predicted Noise Level Above Noise Management Level, dB	Noise Category
22 HILL ST, TURVEY PARK NSW 2650	RES	NCA11	42	59	17	Moderately Intrusive Above Sleep Dist
1/49 FLINDERS ST, TURVEY PARK NSW 2650	RES	NCA11	42	59	17	Moderately Intrusive Above Sleep Dist
47 FLINDERS ST, TURVEY PARK NSW 2650	RES	NCA11	42	59	17	Moderately Intrusive Above Sleep Dist
11 YOUNG ST, TURVEY PARK NSW 2650	RES	NCA11	42	59	17	Moderately Intrusive Above Sleep Dist
7 HILL ST, TURVEY PARK NSW 2650	RES	NCA11	42	59	17	Moderately Intrusive Above Sleep Dist
51 COLLINS ST, TURVEY PARK NSW 2650	RES	NCA11	42	59	17	Moderately Intrusive Above Sleep Dist
11 HILL ST, TURVEY PARK NSW 2650	RES	NCA11	42	59	17	Moderately Intrusive Above Sleep Dist
49 COLLINS ST, TURVEY PARK NSW 2650	RES	NCA11	42	59	17	Moderately Intrusive Above Sleep Dist
23 HILL ST, TURVEY PARK NSW 2650	RES	NCA11	42	59	17	Moderately Intrusive Above Sleep Dist
50 COLLINS ST, TURVEY PARK NSW 2650	RES	NCA11	42	59	17	Moderately Intrusive Above Sleep Dist

Results by Receiver

Address	Land Use	Noise Catchment Area	Construction Noise Management Level, dBA	Predicted Noise Level, dBA	Predicted Noise Level Above Noise Management Level, dB	Noise Category
47 COLLINS ST, TURVEY PARK NSW 2650	RES	NCA11	42	59	17	Moderately Intrusive Above Sleep Dist
12 YOUNG ST, TURVEY PARK NSW 2650	RES	NCA11	42	59	17	Moderately Intrusive Above Sleep Dist
42 FLINDERS ST, TURVEY PARK NSW 2650	RES	NCA11	42	59	17	Moderately Intrusive Above Sleep Dist
9 BEAUTY POINT AV, TURVEY PARK NSW 2650	RES	NCA11	42	59	17	Moderately Intrusive Above Sleep Dist
1 BURWOOD ST, TURVEY PARK NSW 2650	RES	NCA11	42	59	17	Moderately Intrusive Above Sleep Dist
18 MACLEAY ST, TURVEY PARK NSW 2650	RES	NCA11	42	59	17	Moderately Intrusive Above Sleep Dist
16 MACLEAY ST, TURVEY PARK NSW 2650	RES	NCA11	42	59	17	Moderately Intrusive Above Sleep Dist
23 MACLEAY ST, TURVEY PARK NSW 2650	RES	NCA11	42	59	17	Moderately Intrusive Above Sleep Dist
2 DONNELLY AV, WAGGA WAGGA NSW 2650	RES	NCA11	42	59	17	Moderately Intrusive Above Sleep Dist
12 DONNELLY AV, WAGGA WAGGA NSW 2650	RES	NCA11	42	59	17	Moderately Intrusive Above Sleep Dist

Results by Receiver

Address	Land Use	Noise Catchment Area	Construction Noise Management Level, dBA	Predicted Noise Level, dBA	Predicted Noise Level Above Noise Management Level, dB	Noise Category
58B FLINDERS ST, TURVEY PARK NSW 2650	RES	NCA11	42	58	16	Moderately Intrusive Above Sleep Dist
20 HILL ST, TURVEY PARK NSW 2650	RES	NCA11	42	58	16	Moderately Intrusive Above Sleep Dist
53 FLINDERS ST, TURVEY PARK NSW 2650	RES	NCA11	42	58	16	Moderately Intrusive Above Sleep Dist
13 YOUNG ST, TURVEY PARK NSW 2650	RES	NCA11	42	58	16	Moderately Intrusive Above Sleep Dist
53 COLLINS ST, TURVEY PARK NSW 2650	RES	NCA11	42	58	16	Moderately Intrusive Above Sleep Dist
48 FLINDERS ST, TURVEY PARK NSW 2650	RES	NCA11	42	58	16	Moderately Intrusive Above Sleep Dist
4 BEAUTY POINT AV, TURVEY PARK NSW 2650	RES	NCA11	42	58	16	Moderately Intrusive Above Sleep Dist
54 COLLINS ST, TURVEY PARK NSW 2650	RES	NCA11	42	58	16	Moderately Intrusive Above Sleep Dist
2 BEAUTY POINT AV, TURVEY PARK NSW 2650	RES	NCA11	42	58	16	Moderately Intrusive Above Sleep Dist
2 BURWOOD ST, TURVEY PARK NSW 2650	RES	NCA11	42	58	16	Moderately Intrusive Above Sleep Dist

Results by Receiver

Address	Land Use	Noise Catchment Area	Construction Noise Management Level, dBA	Predicted Noise Level, dBA	Predicted Noise Level Above Noise Management Level, dB	Noise Category
41 MACLEAY ST, TURVEY PARK NSW 2650	RES	NCA11	42	58	16	Moderately Intrusive Above Sleep Dist
39 MACLEAY ST, TURVEY PARK NSW 2650	RES	NCA11	42	58	16	Moderately Intrusive Above Sleep Dist
22 MACLEAY ST, TURVEY PARK NSW 2650	RES	NCA11	42	58	16	Moderately Intrusive Above Sleep Dist
7 BEAUTY POINT AV, TURVEY PARK NSW 2650	RES	NCA11	42	58	16	Moderately Intrusive Above Sleep Dist
20 MACLEAY ST, TURVEY PARK NSW 2650	RES	NCA11	42	58	16	Moderately Intrusive Above Sleep Dist
22 RAILWAY ST, TURVEY PARK NSW 2650	RES	NCA11	42	58	16	Moderately Intrusive Above Sleep Dist
24 RAILWAY ST, TURVEY PARK NSW 2650	RES	NCA11	42	58	16	Moderately Intrusive Above Sleep Dist
5 EDMONDSON ST, TURVEY PARK NSW 2650	RES	NCA11	42	58	16	Moderately Intrusive Above Sleep Dist
3 EDMONDSON ST, TURVEY PARK NSW 2650	RES	NCA11	42	58	16	Moderately Intrusive Above Sleep Dist
1 EDMONDSON ST, TURVEY PARK NSW 2650	RES	NCA11	42	58	16	Moderately Intrusive Above Sleep Dist

Results by Receiver

Address	Land Use	Noise Catchment Area	Construction Noise Management Level, dBA	Predicted Noise Level, dBA	Predicted Noise Level Above Noise Management Level, dB	Noise Category
104 EDWARD ST, WAGGA WAGGA NSW 2650	OHO	NCA11	45	61	16	Moderately Intrusive
14 BEAUTY POINT AV, TURVEY PARK NSW 2650	RES	NCA11	42	57	15	Clearly Audible Above Sleep Dist
55 FLINDERS ST, TURVEY PARK NSW 2650	RES	NCA11	42	57	15	Clearly Audible Above Sleep Dist
60 COLLINS ST, TURVEY PARK NSW 2650	RES	NCA11	42	57	15	Clearly Audible Above Sleep Dist
59 COLLINS ST, TURVEY PARK NSW 2650	RES	NCA11	42	57	15	Clearly Audible Above Sleep Dist
57 COLLINS ST, TURVEY PARK NSW 2650	RES	NCA11	42	57	15	Clearly Audible Above Sleep Dist
52 FLINDERS ST, TURVEY PARK NSW 2650	RES	NCA11	42	57	15	Clearly Audible Above Sleep Dist
58 COLLINS ST, TURVEY PARK NSW 2650	RES	NCA11	42	57	15	Clearly Audible Above Sleep Dist
55 COLLINS ST, TURVEY PARK NSW 2650	RES	NCA11	42	57	15	Clearly Audible Above Sleep Dist
50 FLINDERS ST, TURVEY PARK NSW 2650	RES	NCA11	42	57	15	Clearly Audible Above Sleep Dist

Results by Receiver

Address	Land Use	Noise Catchment Area	Construction Noise Management Level, dBA	Predicted Noise Level, dBA	Predicted Noise Level Above Noise Management Level, dB	Noise Category
1/56 COLLINS ST, TURVEY PARK NSW 2650	RES	NCA11	42	57	15	Clearly Audible Above Sleep Dist
9 HILL ST, TURVEY PARK NSW 2650	RES	NCA11	42	57	15	Clearly Audible Above Sleep Dist
15 HILL ST, TURVEY PARK NSW 2650	RES	NCA11	42	57	15	Clearly Audible Above Sleep Dist
43 MACLEAY ST, TURVEY PARK NSW 2650	RES	NCA11	42	57	15	Clearly Audible Above Sleep Dist
26 MACLEAY ST, TURVEY PARK NSW 2650	RES	NCA11	42	57	15	Clearly Audible Above Sleep Dist
6 BURWOOD ST, TURVEY PARK NSW 2650	RES	NCA11	42	57	15	Clearly Audible Above Sleep Dist
24 MACLEAY ST, TURVEY PARK NSW 2650	RES	NCA11	42	57	15	Clearly Audible Above Sleep Dist
5 BEAUTY POINT AV, TURVEY PARK NSW 2650	RES	NCA11	42	57	15	Clearly Audible Above Sleep Dist
6/36 COLLINS ST, TURVEY PARK NSW 2650	RES	NCA11	42	57	15	Clearly Audible Above Sleep Dist
158 EDWARD ST, WAGGA WAGGA NSW 2650	RES	NCA11	42	57	15	Clearly Audible Above Sleep Dist

Results by Receiver

Address	Land Use	Noise Catchment Area	Construction Noise Management Level, dBA	Predicted Noise Level, dBA	Predicted Noise Level Above Noise Management Level, dB	Noise Category
2 PETER ST, WAGGA WAGGA NSW 2650	RES	NCA11	42	57	15	Clearly Audible Above Sleep Dist
127 EDWARD ST, WAGGA WAGGA NSW 2650	OHO	NCA11	45	60	15	Clearly Audible
4 PETER ST, WAGGA WAGGA NSW 2650	RES	NCA11	42	57	15	Clearly Audible Above Sleep Dist
20 PETER ST, WAGGA WAGGA NSW 2650	RES	NCA11	42	57	15	Clearly Audible Above Sleep Dist
18 BEAUTY POINT AV, TURVEY PARK NSW 2650	RES	NCA11	42	56	14	Clearly Audible Above Sleep Dist
2/11 COLEMAN ST, TURVEY PARK NSW 2650	RES	NCA11	42	56	14	Clearly Audible Above Sleep Dist
1/11 COLEMAN ST, TURVEY PARK NSW 2650	RES	NCA11	42	56	14	Clearly Audible Above Sleep Dist
13 RICHARD ST, TURVEY PARK NSW 2650	RES	NCA11	42	56	14	Clearly Audible Above Sleep Dist
63 COLLINS ST, TURVEY PARK NSW 2650	RES	NCA11	42	56	14	Clearly Audible Above Sleep Dist
57 FLINDERS ST, TURVEY PARK NSW 2650	RES	NCA11	42	56	14	Clearly Audible Above Sleep Dist

Results by Receiver

Address	Land Use	Noise Catchment Area	Construction Noise Management Level, dBA	Predicted Noise Level, dBA	Predicted Noise Level Above Noise Management Level, dB	Noise Category
61 COLLINS ST, TURVEY PARK NSW 2650	RES	NCA11	42	56	14	Clearly Audible Above Sleep Dist
56 FLINDERS ST, TURVEY PARK NSW 2650	RES	NCA11	42	56	14	Clearly Audible Above Sleep Dist
10 HILL ST, TURVEY PARK NSW 2650	RES	NCA11	42	56	14	Clearly Audible Above Sleep Dist
54 FLINDERS ST, TURVEY PARK NSW 2650	RES	NCA11	42	56	14	Clearly Audible Above Sleep Dist
26 HILL ST, TURVEY PARK NSW 2650	RES	NCA11	42	56	14	Clearly Audible Above Sleep Dist
8 BEAUTY POINT AV, TURVEY PARK NSW 2650	RES	NCA11	42	56	14	Clearly Audible Above Sleep Dist
3 HILL ST, TURVEY PARK NSW 2650	RES	NCA11	42	56	14	Clearly Audible Above Sleep Dist
1 HILL ST, TURVEY PARK NSW 2650	RES	NCA11	42	56	14	Clearly Audible Above Sleep Dist
47 MACLEAY ST, TURVEY PARK NSW 2650	RES	NCA11	42	56	14	Clearly Audible Above Sleep Dist
5 HILL ST, TURVEY PARK NSW 2650	RES	NCA11	42	56	14	Clearly Audible Above Sleep Dist

Results by Receiver

Address	Land Use	Noise Catchment Area	Construction Noise Management Level, dBA	Predicted Noise Level, dBA	Predicted Noise Level Above Noise Management Level, dB	Noise Category
30 MACLEAY ST, TURVEY PARK NSW 2650	RES	NCA11	42	56	14	Clearly Audible Above Sleep Dist
6 BEAUTY POINT AV, TURVEY PARK NSW 2650	RES	NCA11	42	56	14	Clearly Audible Above Sleep Dist
13 HILL ST, TURVEY PARK NSW 2650	RES	NCA11	42	56	14	Clearly Audible Above Sleep Dist
28 MACLEAY ST, TURVEY PARK NSW 2650	RES	NCA11	42	56	14	Clearly Audible Above Sleep Dist
4 BURWOOD ST, TURVEY PARK NSW 2650	RES	NCA11	42	56	14	Clearly Audible Above Sleep Dist
6 PETER ST, WAGGA WAGGA NSW 2650	RES	NCA11	42	56	14	Clearly Audible Above Sleep Dist
8 PETER ST, WAGGA WAGGA NSW 2650	RES	NCA11	42	56	14	Clearly Audible Above Sleep Dist
10 PETER ST, WAGGA WAGGA NSW 2650	RES	NCA11	42	56	14	Clearly Audible Above Sleep Dist
24 BEAUTY POINT AV, TURVEY PARK NSW 2650	RES	NCA11	42	55	13	Clearly Audible Above Sleep Dist
22 BEAUTY POINT AV, TURVEY PARK NSW 2650	RES	NCA11	42	55	13	Clearly Audible Above Sleep Dist

Results by Receiver

Address	Land Use	Noise Catchment Area	Construction Noise Management Level, dBA	Predicted Noise Level, dBA	Predicted Noise Level Above Noise Management Level, dB	Noise Category
13 COLEMAN ST, TURVEY PARK NSW 2650	RES	NCA11	42	55	13	Clearly Audible Above Sleep Dist
16 BEAUTY POINT AV, TURVEY PARK NSW 2650	RES	NCA11	42	55	13	Clearly Audible Above Sleep Dist
61 FLINDERS ST, TURVEY PARK NSW 2650	RES	NCA11	42	55	13	Clearly Audible Above Sleep Dist
60A FLINDERS ST, TURVEY PARK NSW 2650	RES	NCA11	42	55	13	Clearly Audible Above Sleep Dist
2 HILL ST, TURVEY PARK NSW 2650	RES	NCA11	42	55	13	Clearly Audible Above Sleep Dist
51-53 MACLEAY ST, TURVEY PARK NSW 2650	RES	NCA11	42	55	13	Clearly Audible Above Sleep Dist
10 BEAUTY POINT AV, TURVEY PARK NSW 2650	RES	NCA11	42	55	13	Clearly Audible Above Sleep Dist
49 MACLEAY ST, TURVEY PARK NSW 2650	RES	NCA11	42	55	13	Clearly Audible Above Sleep Dist
28 HILL ST, TURVEY PARK NSW 2650	RES	NCA11	42	55	13	Clearly Audible Above Sleep Dist
32 MACLEAY ST, TURVEY PARK NSW 2650	RES	NCA11	42	55	13	Clearly Audible Above Sleep Dist

Results by Receiver

Address	Land Use	Noise Catchment Area	Construction Noise Management Level, dBA	Predicted Noise Level, dBA	Predicted Noise Level Above Noise Management Level, dB	Noise Category
3/36 COLLINS ST, TURVEY PARK NSW 2650	RES	NCA11	42	55	13	Clearly Audible Above Sleep Dist
7 EDMONDSON ST, TURVEY PARK NSW 2650	RES	NCA11	42	55	13	Clearly Audible Above Sleep Dist
12 PETER ST, WAGGA WAGGA NSW 2650	RES	NCA11	42	55	13	Clearly Audible Above Sleep Dist
14 PETER ST, WAGGA WAGGA NSW 2650	RES	NCA11	42	55	13	Clearly Audible Above Sleep Dist
1 COLEMAN ST, TURVEY PARK NSW 2650	RES	NCA11	42	54	12	Clearly Audible Above Sleep Dist
5 COLEMAN ST, TURVEY PARK NSW 2650	RES	NCA11	42	54	12	Clearly Audible Above Sleep Dist
19 COLEMAN ST, TURVEY PARK NSW 2650	RES	NCA11	42	54	12	Clearly Audible Above Sleep Dist
14 YOUNG ST, TURVEY PARK NSW 2650	RES	NCA11	42	54	12	Clearly Audible Above Sleep Dist
22 RICHARD ST, TURVEY PARK NSW 2650	RES	NCA11	42	54	12	Clearly Audible Above Sleep Dist
23 BEAUTY POINT AV, TURVEY PARK NSW 2650	RES	NCA11	42	54	12	Clearly Audible Above Sleep Dist

Results by Receiver

Address	Land Use	Noise Catchment Area	Construction Noise Management Level, dBA	Predicted Noise Level, dBA	Predicted Noise Level Above Noise Management Level, dB	Noise Category
12 BEAUTY POINT AV, TURVEY PARK NSW 2650	RES	NCA11	42	54	12	Clearly Audible Above Sleep Dist
14 HILL ST, TURVEY PARK NSW 2650	RES	NCA11	42	54	12	Clearly Audible Above Sleep Dist
29 COLEMAN ST, TURVEY PARK NSW 2650	RES	NCA11	42	54	12	Clearly Audible Above Sleep Dist
16 HILL ST, TURVEY PARK NSW 2650	RES	NCA11	42	54	12	Clearly Audible Above Sleep Dist
34 MACLEAY ST, TURVEY PARK NSW 2650	RES	NCA11	42	54	12	Clearly Audible Above Sleep Dist
27 EDMONDSON ST, TURVEY PARK NSW 2650	RES	NCA11	42	54	12	Clearly Audible Above Sleep Dist
52 COLLINS ST, TURVEY PARK NSW 2650	RES	NCA11	42	54	12	Clearly Audible Above Sleep Dist
188 EDWARD ST, WAGGA WAGGA NSW 2650	RES	NCA11	42	54	12	Clearly Audible Above Sleep Dist
157 EDWARD ST, WAGGA WAGGA NSW 2650	RES	NCA11	42	54	12	Clearly Audible Above Sleep Dist
WOMBOY 5/165 EDWARD ST, WAGGA WAGGA NSW 2650	RES	NCA11	42	54	12	Clearly Audible Above Sleep Dist

Results by Receiver

Address	Land Use	Noise Catchment Area	Construction Noise Management Level, dBA	Predicted Noise Level, dBA	Predicted Noise Level Above Noise Management Level, dB	Noise Category
26 PETER ST, WAGGA WAGGA NSW 2650	RES	NCA11	42	54	12	Clearly Audible Above Sleep Dist
28 PETER ST, WAGGA WAGGA NSW 2650	RES	NCA11	42	54	12	Clearly Audible Above Sleep Dist
4 COLEMAN ST, TURVEY PARK NSW 2650	RES	NCA11	42	53	11	Clearly Audible Above Sleep Dist
9 COLEMAN ST, TURVEY PARK NSW 2650	RES	NCA11	42	53	11	Clearly Audible Above Sleep Dist
4 HILL ST, TURVEY PARK NSW 2650	RES	NCA11	42	53	11	Clearly Audible Above Sleep Dist
18 HILL ST, TURVEY PARK NSW 2650	RES	NCA11	42	53	11	Clearly Audible Above Sleep Dist
45 MACLEAY ST, TURVEY PARK NSW 2650	RES	NCA11	42	53	11	Clearly Audible Above Sleep Dist
5/36 COLLINS ST, TURVEY PARK NSW 2650	RES	NCA11	42	53	11	Clearly Audible Above Sleep Dist
160 EDWARD ST, WAGGA WAGGA NSW 2650	RES	NCA11	42	53	11	Clearly Audible Above Sleep Dist
24 PETER ST, WAGGA WAGGA NSW 2650	RES	NCA11	42	53	11	Clearly Audible Above Sleep Dist

Results by Receiver

Address	Land Use	Noise Catchment Area	Construction Noise Management Level, dBA	Predicted Noise Level, dBA	Predicted Noise Level Above Noise Management Level, dB	Noise Category
32 PETER ST, WAGGA WAGGA NSW 2650	RES	NCA11	42	53	11	Clearly Audible Above Sleep Dist
20 BEAUTY POINT AV, TURVEY PARK NSW 2650	RES	NCA11	42	52	10	Clearly Audible
7 COLEMAN ST, TURVEY PARK NSW 2650	RES	NCA11	42	52	10	Clearly Audible
2/19A COLEMAN ST, TURVEY PARK NSW 2650	RES	NCA11	42	52	10	Clearly Audible
25 BEAUTY POINT AV, TURVEY PARK NSW 2650	RES	NCA11	42	52	10	Clearly Audible
12 HILL ST, TURVEY PARK NSW 2650	RES	NCA11	42	52	10	Clearly Audible
23 COLEMAN ST, TURVEY PARK NSW 2650	RES	NCA11	42	52	10	Clearly Audible
24 HILL ST, TURVEY PARK NSW 2650	RES	NCA11	42	52	10	Clearly Audible
19 BEAUTY POINT AV, TURVEY PARK NSW 2650	RES	NCA11	42	52	10	Clearly Audible
25 EDMONDSON ST, TURVEY PARK NSW 2650	RES	NCA11	42	52	10	Clearly Audible
23 EDMONDSON ST, TURVEY PARK NSW 2650	RES	NCA11	42	52	10	Clearly Audible
21 EDMONDSON ST, TURVEY PARK NSW 2650	RES	NCA11	42	52	10	Clearly Audible
19 EDMONDSON ST, TURVEY PARK NSW 2650	RES	NCA11	42	52	10	Clearly Audible

Results by Receiver

Address	Land Use	Noise Catchment Area	Construction Noise Management Level, dBA	Predicted Noise Level, dBA	Predicted Noise Level Above Noise Management Level, dB	Noise Category
17 EDMONDSON ST, TURVEY PARK NSW 2650	RES	NCA11	42	52	10	Clearly Audible
153 EDWARD ST, WAGGA WAGGA NSW 2650	RES	NCA11	42	52	10	Clearly Audible
22 PETER ST, WAGGA WAGGA NSW 2650	RES	NCA11	42	52	10	Clearly Audible
40 PETER ST, WAGGA WAGGA NSW 2650	RES	NCA11	42	52	10	Clearly Audible
7/7 BLAKE ST, WAGGA WAGGA NSW 2650	RES	NCA11	42	52	10	Clearly Audible
42 PETER ST, WAGGA WAGGA NSW 2650	RES	NCA11	42	52	10	Clearly Audible
3 COLEMAN ST, TURVEY PARK NSW 2650	RES	NCA11	42	51	9	Clearly Audible
48 COLEMAN ST, TURVEY PARK NSW 2650	RES	NCA11	42	51	9	Clearly Audible
44 COLEMAN ST, TURVEY PARK NSW 2650	RES	NCA11	42	51	9	Clearly Audible
21 COLEMAN ST, TURVEY PARK NSW 2650	RES	NCA11	42	51	9	Clearly Audible
21 BEAUTY POINT AV, TURVEY PARK NSW 2650	RES	NCA11	42	51	9	Clearly Audible
13 EDMONDSON ST, TURVEY PARK NSW 2650	RES	NCA11	42	51	9	Clearly Audible
6/36 COLLINS ST, TURVEY PARK NSW 2650	RES	NCA11	42	51	9	Clearly Audible
9 EDMONDSON ST, TURVEY PARK NSW 2650	RES	NCA11	42	51	9	Clearly Audible

Results by Receiver

Address	Land Use	Noise Catchment Area	Construction Noise Management Level, dBA	Predicted Noise Level, dBA	Predicted Noise Level Above Noise Management Level, dB	Noise Category
4 KILDARE ST, TURVEY PARK NSW 2650	RES	NCA11	42	51	9	Clearly Audible
104 EDWARD ST, WAGGA WAGGA NSW 2650	OHO	NCA11	45	54	9	Clearly Audible
8 BEST ST, WAGGA WAGGA NSW 2650	RES	NCA11	42	51	9	Clearly Audible
7 FOX ST, WAGGA WAGGA NSW 2650	RES	NCA11	42	51	9	Clearly Audible
9/7 BLAKE ST, WAGGA WAGGA NSW 2650	RES	NCA11	42	51	9	Clearly Audible
46 PETER ST, WAGGA WAGGA NSW 2650	RES	NCA11	42	51	9	Clearly Audible
50 PETER ST, WAGGA WAGGA NSW 2650	RES	NCA11	42	51	9	Clearly Audible
2/56 COLLINS ST, TURVEY PARK NSW 2650	RES	NCA11	42	51	9	Clearly Audible
35 BEAUTY POINT AV, TURVEY PARK NSW 2650	RES	NCA11	42	50	8	Clearly Audible
42 COLEMAN ST, TURVEY PARK NSW 2650	RES	NCA11	42	50	8	Clearly Audible
16 RAILWAY ST, TURVEY PARK NSW 2650	RES	NCA11	42	50	8	Clearly Audible
20 RAILWAY ST, TURVEY PARK NSW 2650	RES	NCA11	42	50	8	Clearly Audible
15 EDMONDSON ST, TURVEY PARK NSW 2650	RES	NCA11	42	50	8	Clearly Audible
11 EDMONDSON ST, TURVEY PARK NSW 2650	RES	NCA11	42	50	8	Clearly Audible

Results by Receiver

Address	Land Use	Noise Catchment Area	Construction Noise Management Level, dBA	Predicted Noise Level, dBA	Predicted Noise Level Above Noise Management Level, dB	Noise Category
22 BROOKKONG AV, WAGGA WAGGA NSW 2650	RES	NCA11	42	50	8	Clearly Audible
188 EDWARD ST, WAGGA WAGGA NSW 2650	RES	NCA11	42	50	8	Clearly Audible
170 EDWARD ST, WAGGA WAGGA NSW 2650	RES	NCA11	42	50	8	Clearly Audible
131A EDWARD ST, WAGGA WAGGA NSW 2650	RES	NCA11	42	50	8	Clearly Audible
133 EDWARD ST, WAGGA WAGGA NSW 2650	RES	NCA11	42	50	8	Clearly Audible
161 EDWARD ST, WAGGA WAGGA NSW 2650	RES	NCA11	42	50	8	Clearly Audible
14 BEST ST, WAGGA WAGGA NSW 2650	RES	NCA11	42	50	8	Clearly Audible
27 FOX ST, WAGGA WAGGA NSW 2650	RES	NCA11	42	50	8	Clearly Audible
8 PETER ST, WAGGA WAGGA NSW 2650	RES	NCA11	42	50	8	Clearly Audible
56 MACLEAY ST, TURVEY PARK NSW 2650	RES	NCA11	42	49	7	Clearly Audible
15 COLEMAN ST, TURVEY PARK NSW 2650	RES	NCA11	42	49	7	Clearly Audible
46 COLEMAN ST, TURVEY PARK NSW 2650	RES	NCA11	42	49	7	Clearly Audible
20 RICHARD ST, TURVEY PARK NSW 2650	RES	NCA11	42	49	7	Clearly Audible
50 COLEMAN ST, TURVEY PARK NSW 2650	RES	NCA11	42	49	7	Clearly Audible

Results by Receiver

Address	Land Use	Noise Catchment Area	Construction Noise Management Level, dBA	Predicted Noise Level, dBA	Predicted Noise Level Above Noise Management Level, dB	Noise Category
17 BEAUTY POINT AV, TURVEY PARK NSW 2650	RES	NCA11	42	49	7	Clearly Audible
2 LAKE ALBERT RD, EAST WAGGA WAGGA NSW 2650	OHO	NCA11	45	52	7	Clearly Audible
2 KILDARE ST, TURVEY PARK NSW 2650	RES	NCA11	42	49	7	Clearly Audible
1 FOX ST, WAGGA WAGGA NSW 2650	RES	NCA11	42	49	7	Clearly Audible
162 EDWARD ST, WAGGA WAGGA NSW 2650	RES	NCA11	42	49	7	Clearly Audible
164 EDWARD ST, WAGGA WAGGA NSW 2650	RES	NCA11	42	49	7	Clearly Audible
163 EDWARD ST, WAGGA WAGGA NSW 2650	RES	NCA11	42	49	7	Clearly Audible
1/173 EDWARD ST, WAGGA WAGGA NSW 2650	RES	NCA11	42	49	7	Clearly Audible
175 EDWARD ST, WAGGA WAGGA NSW 2650	RES	NCA11	42	49	7	Clearly Audible
11A BEST ST, WAGGA WAGGA NSW 2650	RES	NCA11	42	49	7	Clearly Audible
2/4-6 THORNE ST, WAGGA WAGGA NSW 2650	RES	NCA11	42	49	7	Clearly Audible
12 FOX ST, WAGGA WAGGA NSW 2650	RES	NCA11	42	49	7	Clearly Audible
18 BEST ST, WAGGA WAGGA NSW 2650	RES	NCA11	42	49	7	Clearly Audible

Results by Receiver

Address	Land Use	Noise Catchment Area	Construction Noise Management Level, dBA	Predicted Noise Level, dBA	Predicted Noise Level Above Noise Management Level, dB	Noise Category
13 FOX ST, WAGGA WAGGA NSW 2650	RES	NCA11	42	49	7	Clearly Audible
21 BEST ST, WAGGA WAGGA NSW 2650	RES	NCA11	42	49	7	Clearly Audible
37 PETER ST, WAGGA WAGGA NSW 2650	RES	NCA11	42	49	7	Clearly Audible
29 MORGAN ST, WAGGA WAGGA NSW 2650	RES	NCA11	42	49	7	Clearly Audible
25 MORGAN ST, WAGGA WAGGA NSW 2650	RES	NCA11	42	49	7	Clearly Audible
24-26 BROOKKONG AV, WAGGA WAGGA NSW 2650	RES	NCA11	42	49	7	Clearly Audible
62 MACLEAY ST, TURVEY PARK NSW 2650	RES	NCA11	42	48	6	Clearly Audible
31 BEAUTY POINT AV, TURVEY PARK NSW 2650	RES	NCA11	42	48	6	Clearly Audible
29 BEAUTY POINT AV, TURVEY PARK NSW 2650	RES	NCA11	42	48	6	Clearly Audible
17 COLEMAN ST, TURVEY PARK NSW 2650	RES	NCA11	42	48	6	Clearly Audible
48 COLEMAN ST, TURVEY PARK NSW 2650	RES	NCA11	42	48	6	Clearly Audible
31 EDMONDSON ST, TURVEY PARK NSW 2650	RES	NCA11	42	48	6	Clearly Audible
11 BEAUTY POINT AV, TURVEY PARK NSW 2650	RES	NCA11	42	48	6	Clearly Audible

Results by Receiver

Address	Land Use	Noise Catchment Area	Construction Noise Management Level, dBA	Predicted Noise Level, dBA	Predicted Noise Level Above Noise Management Level, dB	Noise Category
168 EDWARD ST, WAGGA WAGGA NSW 2650	RES	NCA11	42	48	6	Clearly Audible
131A EDWARD ST, WAGGA WAGGA NSW 2650	RES	NCA11	42	48	6	Clearly Audible
177 EDWARD ST, WAGGA WAGGA NSW 2650	RES	NCA11	42	48	6	Clearly Audible
179 EDWARD ST, WAGGA WAGGA NSW 2650	RES	NCA11	42	48	6	Clearly Audible
181 EDWARD ST, WAGGA WAGGA NSW 2650	RES	NCA11	42	48	6	Clearly Audible
13 BEST ST, WAGGA WAGGA NSW 2650	RES	NCA11	42	48	6	Clearly Audible
10 FOX ST, WAGGA WAGGA NSW 2650	RES	NCA11	42	48	6	Clearly Audible
16 BEST ST, WAGGA WAGGA NSW 2650	RES	NCA11	42	48	6	Clearly Audible
19 BEST ST, WAGGA WAGGA NSW 2650	RES	NCA11	42	48	6	Clearly Audible
20 BEST ST, WAGGA WAGGA NSW 2650	RES	NCA11	42	48	6	Clearly Audible
24 BEST ST, WAGGA WAGGA NSW 2650	RES	NCA11	42	48	6	Clearly Audible
30 PETER ST, WAGGA WAGGA NSW 2650	RES	NCA11	42	48	6	Clearly Audible
36 PETER ST, WAGGA WAGGA NSW 2650	RES	NCA11	42	48	6	Clearly Audible
21 MORGAN ST, WAGGA WAGGA NSW 2650	RES	NCA11	42	48	6	Clearly Audible

Results by Receiver

Address	Land Use	Noise Catchment Area	Construction Noise Management Level, dBA	Predicted Noise Level, dBA	Predicted Noise Level Above Noise Management Level, dB	Noise Category
25-27 MORGAN ST, WAGGA WAGGA NSW 2650	RES	NCA11	42	48	6	Clearly Audible
44 BEST ST, WAGGA WAGGA NSW 2650	RES	NCA11	42	48	6	Clearly Audible
WILLANS HILL SCHOOL 131 LORD BADEN POWELL DR, TURVEY PARK NSW 2650	RES	NCA11	42	47	5	Noticeable
101 MACLEAY ST, TURVEY PARK NSW 2650	RES	NCA11	42	47	5	Noticeable
68 MACLEAY ST, TURVEY PARK NSW 2650	RES	NCA11	42	47	5	Noticeable
2 GRANDVIEW AV, TURVEY PARK NSW 2650	RES	NCA11	42	47	5	Noticeable
27 BEAUTY POINT AV, TURVEY PARK NSW 2650	RES	NCA11	42	47	5	Noticeable
52 COLEMAN ST, TURVEY PARK NSW 2650	RES	NCA11	42	47	5	Noticeable
54 COLEMAN ST, TURVEY PARK NSW 2650	RES	NCA11	42	47	5	Noticeable
33 EDMONDSON ST, TURVEY PARK NSW 2650	RES	NCA11	42	47	5	Noticeable
36 BROOKONG AV, WAGGA WAGGA NSW 2650	RES	NCA11	42	47	5	Noticeable
18 BROOKONG AV, WAGGA WAGGA NSW 2650	RES	NCA11	42	47	5	Noticeable
7 LANGDON AV, WAGGA WAGGA NSW 2650	RES	NCA11	42	47	5	Noticeable

Results by Receiver

Address	Land Use	Noise Catchment Area	Construction Noise Management Level, dBA	Predicted Noise Level, dBA	Predicted Noise Level Above Noise Management Level, dB	Noise Category
3/12 SALMON ST, WAGGA WAGGA NSW 2650	RES	NCA11	42	47	5	Noticeable
2 SALMON ST, WAGGA WAGGA NSW 2650	RES	NCA11	42	47	5	Noticeable
196 EDWARD ST, WAGGA WAGGA NSW 2650	RES	NCA11	42	47	5	Noticeable
3 LANGDON AV, WAGGA WAGGA NSW 2650	RES	NCA11	42	47	5	Noticeable
222 EDWARD ST, WAGGA WAGGA NSW 2650	RES	NCA11	42	47	5	Noticeable
4/4-6 THORNE ST, WAGGA WAGGA NSW 2650	RES	NCA11	42	47	5	Noticeable
4-6 THORNE ST, WAGGA WAGGA NSW 2650	RES	NCA11	42	47	5	Noticeable
14 FOX ST, WAGGA WAGGA NSW 2650	RES	NCA11	42	47	5	Noticeable
23 BEST ST, WAGGA WAGGA NSW 2650	RES	NCA11	42	47	5	Noticeable
26 BEST ST, WAGGA WAGGA NSW 2650	RES	NCA11	42	47	5	Noticeable
17 MORGAN ST, WAGGA WAGGA NSW 2650	RES	NCA11	42	47	5	Noticeable
39 PETER ST, WAGGA WAGGA NSW 2650	RES	NCA11	42	47	5	Noticeable
69 TARCUTTA ST, WAGGA WAGGA NSW 2650	RES	NCA11	42	47	5	Noticeable
71 TARCUTTA ST, WAGGA WAGGA NSW 2650	RES	NCA11	42	47	5	Noticeable

Results by Receiver

Address	Land Use	Noise Catchment Area	Construction Noise Management Level, dBA	Predicted Noise Level, dBA	Predicted Noise Level Above Noise Management Level, dB	Noise Category
42 BEST ST, WAGGA WAGGA NSW 2650	RES	NCA11	42	47	5	Noticeable
73 MORGAN ST, WAGGA WAGGA NSW 2650	OHO	NCA11	45	50	5	Noticeable
1 TARCUTTA ST, WAGGA WAGGA NSW 2650	RES	NCA11	42	47	5	Noticeable
64 MACLEAY ST, TURVEY PARK NSW 2650	RES	NCA11	42	46	4	Noticeable
26-28 GRANDVIEW AV, TURVEY PARK NSW 2650	RES	NCA11	42	46	4	Noticeable
2 JARICK ST, TURVEY PARK NSW 2650	RES	NCA11	42	46	4	Noticeable
10 JARICK ST, TURVEY PARK NSW 2650	RES	NCA11	42	46	4	Noticeable
22 GARLAND ST, TURVEY PARK NSW 2650	RES	NCA11	42	46	4	Noticeable
21 GARLAND ST, TURVEY PARK NSW 2650	RES	NCA11	42	46	4	Noticeable
3/20 RAILWAY ST, TURVEY PARK NSW 2650	RES	NCA11	42	46	4	Noticeable
1 KILDARE ST, TURVEY PARK NSW 2650	RES	NCA11	42	46	4	Noticeable
44 BROOKKONG AV, WAGGA WAGGA NSW 2650	RES	NCA11	42	46	4	Noticeable
42 BROOKKONG AV, WAGGA WAGGA NSW 2650	RES	NCA11	42	46	4	Noticeable

Results by Receiver

Address	Land Use	Noise Catchment Area	Construction Noise Management Level, dBA	Predicted Noise Level, dBA	Predicted Noise Level Above Noise Management Level, dB	Noise Category
40 BROOKKONG AV, WAGGA WAGGA NSW 2650	RES	NCA11	42	46	4	Noticeable
32 BROOKKONG AV, WAGGA WAGGA NSW 2650	RES	NCA11	42	46	4	Noticeable
23 BROOKKONG AV, WAGGA WAGGA NSW 2650	RES	NCA11	42	46	4	Noticeable
13 BROOKKONG AV, WAGGA WAGGA NSW 2650	RES	NCA11	42	46	4	Noticeable
3 FOX ST, WAGGA WAGGA NSW 2650	RES	NCA11	42	46	4	Noticeable
5 FOX ST, WAGGA WAGGA NSW 2650	RES	NCA11	42	46	4	Noticeable
7 BROOKKONG AV, WAGGA WAGGA NSW 2650	RES	NCA11	42	46	4	Noticeable
4/7 LANGDON AV, WAGGA WAGGA NSW 2650	RES	NCA11	42	46	4	Noticeable
8/5 LANGDON AV, WAGGA WAGGA NSW 2650	RES	NCA11	42	46	4	Noticeable
166 EDWARD ST, WAGGA WAGGA NSW 2650	RES	NCA11	42	46	4	Noticeable
3/5 LANGDON AV, WAGGA WAGGA NSW 2650	RES	NCA11	42	46	4	Noticeable
202 EDWARD ST, WAGGA WAGGA NSW 2650	RES	NCA11	42	46	4	Noticeable
214 EDWARD ST, WAGGA WAGGA NSW 2650	RES	NCA11	42	46	4	Noticeable

Results by Receiver

Address	Land Use	Noise Catchment Area	Construction Noise Management Level, dBA	Predicted Noise Level, dBA	Predicted Noise Level Above Noise Management Level, dB	Noise Category
9 BEST ST, WAGGA WAGGA NSW 2650	RES	NCA11	42	46	4	Noticeable
173 EDWARD ST, WAGGA WAGGA NSW 2650	RES	NCA11	42	46	4	Noticeable
189 EDWARD ST, WAGGA WAGGA NSW 2650	RES	NCA11	42	46	4	Noticeable
12 BEST ST, WAGGA WAGGA NSW 2650	RES	NCA11	42	46	4	Noticeable
4/4-6 THORNE ST, WAGGA WAGGA NSW 2650	RES	NCA11	42	46	4	Noticeable
9 FOX ST, WAGGA WAGGA NSW 2650	RES	NCA11	42	46	4	Noticeable
12 FOX ST, WAGGA WAGGA NSW 2650	RES	NCA11	42	46	4	Noticeable
225 EDWARD ST, WAGGA WAGGA NSW 2650	RES	NCA11	42	46	4	Noticeable
28 BEST ST, WAGGA WAGGA NSW 2650	RES	NCA11	42	46	4	Noticeable
28 FOX ST, WAGGA WAGGA NSW 2650	RES	NCA11	42	46	4	Noticeable
30 BEST ST, WAGGA WAGGA NSW 2650	RES	NCA11	42	46	4	Noticeable
34 PETER ST, WAGGA WAGGA NSW 2650	RES	NCA11	42	46	4	Noticeable
30 FOX ST, WAGGA WAGGA NSW 2650	RES	NCA11	42	46	4	Noticeable
32 BEST ST, WAGGA WAGGA NSW 2650	RES	NCA11	42	46	4	Noticeable

Results by Receiver

Address	Land Use	Noise Catchment Area	Construction Noise Management Level, dBA	Predicted Noise Level, dBA	Predicted Noise Level Above Noise Management Level, dB	Noise Category
12/40 FITZHARDINGE ST, WAGGA WAGGA NSW 2650	RES	NCA11	42	46	4	Noticeable
34 BEST ST, WAGGA WAGGA NSW 2650	RES	NCA11	42	46	4	Noticeable
65 TARCUTTA ST, WAGGA WAGGA NSW 2650	RES	NCA11	42	46	4	Noticeable
36 BEST ST, WAGGA WAGGA NSW 2650	RES	NCA11	42	46	4	Noticeable
67 TARCUTTA ST, WAGGA WAGGA NSW 2650	RES	NCA11	42	46	4	Noticeable
4/52 PETER ST, WAGGA WAGGA NSW 2650	OHO	NCA11	45	49	4	Noticeable
113 MORGAN ST, WAGGA WAGGA NSW 2650	RES	NCA11	42	46	4	Noticeable
88 FORSYTH ST, WAGGA WAGGA NSW 2650	RES	NCA11	42	46	4	Noticeable
244-248 EDWARD ST, WAGGA WAGGA NSW 2650	RES	NCA11	42	46	4	Noticeable
33 BEAUTY POINT AV, TURVEY PARK NSW 2650	RES	NCA11	42	46	4	Noticeable
103 MACLEAY ST, TURVEY PARK NSW 2650	RES	NCA11	42	45	3	Noticeable
99 MACLEAY ST, TURVEY PARK NSW 2650	RES	NCA11	42	45	3	Noticeable
60 MACLEAY ST, TURVEY PARK NSW 2650	RES	NCA11	42	45	3	Noticeable

Results by Receiver

Address	Land Use	Noise Catchment Area	Construction Noise Management Level, dBA	Predicted Noise Level, dBA	Predicted Noise Level Above Noise Management Level, dB	Noise Category
58 MACLEAY ST, TURVEY PARK NSW 2650	RES	NCA11	42	45	3	Noticeable
26-28 GRANDVIEW AV, TURVEY PARK NSW 2650	RES	NCA11	42	45	3	Noticeable
4 JARICK ST, TURVEY PARK NSW 2650	RES	NCA11	42	45	3	Noticeable
56 COLEMAN ST, TURVEY PARK NSW 2650	RES	NCA11	42	45	3	Noticeable
58 COLEMAN ST, TURVEY PARK NSW 2650	RES	NCA11	42	45	3	Noticeable
60 COLEMAN ST, TURVEY PARK NSW 2650	RES	NCA11	42	45	3	Noticeable
29 EDMONDSON ST, TURVEY PARK NSW 2650	RES	NCA11	42	45	3	Noticeable
1 KILDARE ST, TURVEY PARK NSW 2650	RES	NCA11	42	45	3	Noticeable
1 NORMAN ST, TURVEY PARK NSW 2650	RES	NCA11	42	45	3	Noticeable
34 BROOKONG AV, WAGGA WAGGA NSW 2650	RES	NCA11	42	45	3	Noticeable
30 BROOKONG AV, WAGGA WAGGA NSW 2650	RES	NCA11	42	45	3	Noticeable
28 BROOKONG AV, WAGGA WAGGA NSW 2650	RES	NCA11	42	45	3	Noticeable
24 BROOKONG AV, WAGGA WAGGA NSW 2650	RES	NCA11	42	45	3	Noticeable

Results by Receiver

Address	Land Use	Noise Catchment Area	Construction Noise Management Level, dBA	Predicted Noise Level, dBA	Predicted Noise Level Above Noise Management Level, dB	Noise Category
25 BROOKKONG AV, WAGGA WAGGA NSW 2650	RES	NCA11	42	45	3	Noticeable
11 BROOKKONG AV, WAGGA WAGGA NSW 2650	RES	NCA11	42	45	3	Noticeable
8 BROOKKONG AV, WAGGA WAGGA NSW 2650	RES	NCA11	42	45	3	Noticeable
212 EDWARD ST, WAGGA WAGGA NSW 2650	RES	NCA11	42	45	3	Noticeable
226 EDWARD ST, WAGGA WAGGA NSW 2650	RES	NCA11	42	45	3	Noticeable
2/35 HIGGINS AV, WAGGA WAGGA NSW 2650	RES	NCA11	42	45	3	Noticeable
4/11 FOX ST, WAGGA WAGGA NSW 2650	RES	NCA11	42	45	3	Noticeable
17 BEST ST, WAGGA WAGGA NSW 2650	RES	NCA11	42	45	3	Noticeable
1/53-57 TARCUTTA ST, WAGGA WAGGA NSW 2650	RES	NCA11	42	45	3	Noticeable
2/53-57 TARCUTTA ST, WAGGA WAGGA NSW 2650	RES	NCA11	42	45	3	Noticeable
3/53-57 TARCUTTA ST, WAGGA WAGGA NSW 2650	RES	NCA11	42	45	3	Noticeable
4/53-57 TARCUTTA ST, WAGGA WAGGA NSW 2650	RES	NCA11	42	45	3	Noticeable

Results by Receiver

Address	Land Use	Noise Catchment Area	Construction Noise Management Level, dBA	Predicted Noise Level, dBA	Predicted Noise Level Above Noise Management Level, dB	Noise Category
5/53-57 TARCUTTA ST, WAGGA WAGGA NSW 2650	RES	NCA11	42	45	3	Noticeable
6/53-57 TARCUTTA ST, WAGGA WAGGA NSW 2650	RES	NCA11	42	45	3	Noticeable
7/53-57 TARCUTTA ST, WAGGA WAGGA NSW 2650	RES	NCA11	42	45	3	Noticeable
20 THORNE ST, WAGGA WAGGA NSW 2650	RES	NCA11	42	45	3	Noticeable
32 FOX ST, WAGGA WAGGA NSW 2650	RES	NCA11	42	45	3	Noticeable
34 FOX ST, WAGGA WAGGA NSW 2650	RES	NCA11	42	45	3	Noticeable
36 FOX ST, WAGGA WAGGA NSW 2650	RES	NCA11	42	45	3	Noticeable
40 BEST ST, WAGGA WAGGA NSW 2650	RES	NCA11	42	45	3	Noticeable
38A FOX ST, WAGGA WAGGA NSW 2650	RES	NCA11	42	45	3	Noticeable
38B FOX ST, WAGGA WAGGA NSW 2650	RES	NCA11	42	45	3	Noticeable
42 BEST ST, WAGGA WAGGA NSW 2650	RES	NCA11	42	45	3	Noticeable
40 FOX ST, WAGGA WAGGA NSW 2650	RES	NCA11	42	45	3	Noticeable
44 BEST ST, WAGGA WAGGA NSW 2650	RES	NCA11	42	45	3	Noticeable

Results by Receiver

Address	Land Use	Noise Catchment Area	Construction Noise Management Level, dBA	Predicted Noise Level, dBA	Predicted Noise Level Above Noise Management Level, dB	Noise Category
46 BEST ST, WAGGA WAGGA NSW 2650	RES	NCA11	42	45	3	Noticeable
73 MORGAN ST, WAGGA WAGGA NSW 2650	OHO	NCA11	45	48	3	Noticeable
1/48 BEST ST, WAGGA WAGGA NSW 2650	RES	NCA11	42	45	3	Noticeable
79 TARCUTTA ST, WAGGA WAGGA NSW 2650	RES	NCA11	42	45	3	Noticeable
50 BEST ST, WAGGA WAGGA NSW 2650	RES	NCA11	42	45	3	Noticeable
80 TARCUTTA ST, WAGGA WAGGA NSW 2650	RES	NCA11	42	45	3	Noticeable
11 FORSYTH ST, WAGGA WAGGA NSW 2650	RES	NCA11	42	45	3	Noticeable
1/13 FORSYTH ST, WAGGA WAGGA NSW 2650	RES	NCA11	42	45	3	Noticeable
3/110 TARCUTTA ST, WAGGA WAGGA NSW 2650	RES	NCA11	42	45	3	Noticeable
51 BERRY ST, WAGGA WAGGA NSW 2650	RES	NCA11	42	45	3	Noticeable
1 MORGAN ST, WAGGA WAGGA NSW 2650	OHO	NCA11	45	48	3	Noticeable
76 TARCUTTA ST, WAGGA WAGGA NSW 2650	RES	NCA11	42	45	3	Noticeable
3 GRANDVIEW AV, TURVEY PARK NSW 2650	RES	NCA11	42	44	2	Noticeable

Results by Receiver

Address	Land Use	Noise Catchment Area	Construction Noise Management Level, dBA	Predicted Noise Level, dBA	Predicted Noise Level Above Noise Management Level, dB	Noise Category
1A GRANDVIEW AV, TURVEY PARK NSW 2650	RES	NCA11	42	44	2	Noticeable
15 GRANDVIEW AV, TURVEY PARK NSW 2650	RES	NCA11	42	44	2	Noticeable
20 GRANDVIEW AV, TURVEY PARK NSW 2650	RES	NCA11	42	44	2	Noticeable
18 GRANDVIEW AV, TURVEY PARK NSW 2650	RES	NCA11	42	44	2	Noticeable
22 GRANDVIEW AV, TURVEY PARK NSW 2650	RES	NCA11	42	44	2	Noticeable
30 GRANDVIEW AV, TURVEY PARK NSW 2650	RES	NCA11	42	44	2	Noticeable
6 JARICK ST, TURVEY PARK NSW 2650	RES	NCA11	42	44	2	Noticeable
1 KILDARE ST, TURVEY PARK NSW 2650	RES	NCA11	42	44	2	Noticeable
1 KILDARE ST, TURVEY PARK NSW 2650	RES	NCA11	42	44	2	Noticeable
1 KILDARE ST, TURVEY PARK NSW 2650	RES	NCA11	42	44	2	Noticeable
8 KILDARE ST, TURVEY PARK NSW 2650	RES	NCA11	42	44	2	Noticeable
5 NORMAN ST, TURVEY PARK NSW 2650	RES	NCA11	42	44	2	Noticeable
60 BROOKONG AV, WAGGA WAGGA NSW 2650	RES	NCA11	42	44	2	Noticeable

Results by Receiver

Address	Land Use	Noise Catchment Area	Construction Noise Management Level, dBA	Predicted Noise Level, dBA	Predicted Noise Level Above Noise Management Level, dB	Noise Category
56 BROOKKONG AV, WAGGA WAGGA NSW 2650	RES	NCA11	42	44	2	Noticeable
4 MURRAY ST, WAGGA WAGGA NSW 2650	RES	NCA11	42	44	2	Noticeable
35 BROOKKONG AV, WAGGA WAGGA NSW 2650	RES	NCA11	42	44	2	Noticeable
27 BROOKKONG AV, WAGGA WAGGA NSW 2650	RES	NCA11	42	44	2	Noticeable
8 MURRAY ST, WAGGA WAGGA NSW 2650	RES	NCA11	42	44	2	Noticeable
9 MURRAY ST, WAGGA WAGGA NSW 2650	RES	NCA11	42	44	2	Noticeable
21 BROOKKONG AV, WAGGA WAGGA NSW 2650	RES	NCA11	42	44	2	Noticeable
10 MURRAY ST, WAGGA WAGGA NSW 2650	RES	NCA11	42	44	2	Noticeable
12 MURRAY ST, WAGGA WAGGA NSW 2650	RES	NCA11	42	44	2	Noticeable
9 BROOKKONG AV, WAGGA WAGGA NSW 2650	RES	NCA11	42	44	2	Noticeable
12 BROOKKONG AV, WAGGA WAGGA NSW 2650	RES	NCA11	42	44	2	Noticeable
16 MURRAY ST, WAGGA WAGGA NSW 2650	RES	NCA11	42	44	2	Noticeable
6 SALMON ST, WAGGA WAGGA NSW 2650	RES	NCA11	42	44	2	Noticeable
4 SALMON ST, WAGGA WAGGA NSW 2650	RES	NCA11	42	44	2	Noticeable

Results by Receiver

Address	Land Use	Noise Catchment Area	Construction Noise Management Level, dBA	Predicted Noise Level, dBA	Predicted Noise Level Above Noise Management Level, dB	Noise Category
2A SALMON ST, WAGGA WAGGA NSW 2650	RES	NCA11	42	44	2	Noticeable
19 MURRAY ST, WAGGA WAGGA NSW 2650	RES	NCA11	42	44	2	Noticeable
21 MURRAY ST, WAGGA WAGGA NSW 2650	RES	NCA11	42	44	2	Noticeable
198 EDWARD ST, WAGGA WAGGA NSW 2650	RES	NCA11	42	44	2	Noticeable
206 EDWARD ST, WAGGA WAGGA NSW 2650	RES	NCA11	42	44	2	Noticeable
23 MURRAY ST, WAGGA WAGGA NSW 2650	RES	NCA11	42	44	2	Noticeable
22 FITZHARDINGE ST, WAGGA WAGGA NSW 2650	RES	NCA11	42	44	2	Noticeable
236 EDWARD ST, WAGGA WAGGA NSW 2650	RES	NCA11	42	44	2	Noticeable
2/35 HIGGINS AV, WAGGA WAGGA NSW 2650	RES	NCA11	42	44	2	Noticeable
33 HIGGINS AV, WAGGA WAGGA NSW 2650	RES	NCA11	42	44	2	Noticeable
31 HIGGINS AV, WAGGA WAGGA NSW 2650	RES	NCA11	42	44	2	Noticeable
209A EDWARD ST, WAGGA WAGGA NSW 2650	RES	NCA11	42	44	2	Noticeable
29 HIGGINS AV, WAGGA WAGGA NSW 2650	RES	NCA11	42	44	2	Noticeable

Results by Receiver

Address	Land Use	Noise Catchment Area	Construction Noise Management Level, dBA	Predicted Noise Level, dBA	Predicted Noise Level Above Noise Management Level, dB	Noise Category
2/11 FOX ST, WAGGA WAGGA NSW 2650	RES	NCA11	42	44	2	Noticeable
215-217 EDWARD ST, WAGGA WAGGA NSW 2650	RES	NCA11	42	44	2	Noticeable
215A EDWARD ST, WAGGA WAGGA NSW 2650	RES	NCA11	42	44	2	Noticeable
219 EDWARD ST, WAGGA WAGGA NSW 2650	RES	NCA11	42	44	2	Noticeable
223 EDWARD ST, WAGGA WAGGA NSW 2650	RES	NCA11	42	44	2	Noticeable
221 EDWARD ST, WAGGA WAGGA NSW 2650	RES	NCA11	42	44	2	Noticeable
16 FOX ST, WAGGA WAGGA NSW 2650	RES	NCA11	42	44	2	Noticeable
21 HIGGINS AV, WAGGA WAGGA NSW 2650	RES	NCA11	42	44	2	Noticeable
16 THORNE ST, WAGGA WAGGA NSW 2650	RES	NCA11	42	44	2	Noticeable
4/241-243 EDWARD ST, WAGGA WAGGA NSW 2650	RES	NCA11	42	44	2	Noticeable
24 THORNE ST, WAGGA WAGGA NSW 2650	RES	NCA11	42	44	2	Noticeable
70 MORGAN ST, WAGGA WAGGA NSW 2650	OHO	NCA11	45	47	2	Noticeable
32 THORNE ST, WAGGA WAGGA NSW 2650	RES	NCA11	42	44	2	Noticeable

Results by Receiver

Address	Land Use	Noise Catchment Area	Construction Noise Management Level, dBA	Predicted Noise Level, dBA	Predicted Noise Level Above Noise Management Level, dB	Noise Category
42 FOX ST, WAGGA WAGGA NSW 2650	RES	NCA11	42	44	2	Noticeable
2/39 FOX ST, WAGGA WAGGA NSW 2650	RES	NCA11	42	44	2	Noticeable
1 MORGAN ST, WAGGA WAGGA NSW 2650	OHO	NCA11	45	47	2	Noticeable
2/8 BENTLEY PL, WAGGA WAGGA NSW 2650	RES	NCA11	42	44	2	Noticeable
56 PETER ST, WAGGA WAGGA NSW 2650	RES	NCA11	42	44	2	Noticeable
54 BEST ST, WAGGA WAGGA NSW 2650	RES	NCA11	42	44	2	Noticeable
54 BEST ST, WAGGA WAGGA NSW 2650	RES	NCA11	42	44	2	Noticeable
82 TARCUTTA ST, WAGGA WAGGA NSW 2650	OHO	NCA11	45	47	2	Noticeable
56 FOX ST, WAGGA WAGGA NSW 2650	RES	NCA11	42	44	2	Noticeable
57 BEST ST, WAGGA WAGGA NSW 2650	RES	NCA11	42	44	2	Noticeable
7/5 BENTLEY PL, WAGGA WAGGA NSW 2650	RES	NCA11	42	44	2	Noticeable
66 FOX ST, WAGGA WAGGA NSW 2650	RES	NCA11	42	44	2	Noticeable
68 BEST ST, WAGGA WAGGA NSW 2650	RES	NCA11	42	44	2	Noticeable
72 PETER ST, WAGGA WAGGA NSW 2650	RES	NCA11	42	44	2	Noticeable

Results by Receiver

Address	Land Use	Noise Catchment Area	Construction Noise Management Level, dBA	Predicted Noise Level, dBA	Predicted Noise Level Above Noise Management Level, dB	Noise Category
UNIT 1 74 PETER ST, WAGGA WAGGA NSW 2650	RES	NCA11	42	44	2	Noticeable
76 PETER ST, WAGGA WAGGA NSW 2650	RES	NCA11	42	44	2	Noticeable
4/110 TARCUTTA ST, WAGGA WAGGA NSW 2650	RES	NCA11	42	44	2	Noticeable
58 BEST ST, WAGGA WAGGA NSW 2650	RES	NCA11	42	44	2	Noticeable
8 EURDEIN LANE, WAGGA WAGGA NSW 2650	RES	NCA11	42	44	2	Noticeable
2 EURDEIN LANE, WAGGA WAGGA NSW 2650	RES	NCA11	42	44	2	Noticeable
83 TARCUTTA ST, WAGGA WAGGA NSW 2650	RES	NCA11	42	44	2	Noticeable
3/14 DAY ST, WAGGA WAGGA NSW 2650	RES	NCA11	42	44	2	Noticeable
105 MACLEAY ST, TURVEY PARK NSW 2650	RES	NCA11	42	43	1	Noticeable
9 SUNSHINE AV, TURVEY PARK NSW 2650	RES	NCA11	42	43	1	Noticeable
1 GRANDVIEW AV, TURVEY PARK NSW 2650	RES	NCA11	42	43	1	Noticeable
5 GRANDVIEW AV, TURVEY PARK NSW 2650	RES	NCA11	42	43	1	Noticeable
9 GRANDVIEW AV, TURVEY PARK NSW 2650	RES	NCA11	42	43	1	Noticeable

Results by Receiver

Address	Land Use	Noise Catchment Area	Construction Noise Management Level, dBA	Predicted Noise Level, dBA	Predicted Noise Level Above Noise Management Level, dB	Noise Category
25 GRANDVIEW AV, TURVEY PARK NSW 2650	RES	NCA11	42	43	1	Noticeable
27 GRANDVIEW AV, TURVEY PARK NSW 2650	RES	NCA11	42	43	1	Noticeable
4 GRANDVIEW AV, TURVEY PARK NSW 2650	RES	NCA11	42	43	1	Noticeable
6 GRANDVIEW AV, TURVEY PARK NSW 2650	RES	NCA11	42	43	1	Noticeable
24 GRANDVIEW AV, TURVEY PARK NSW 2650	RES	NCA11	42	43	1	Noticeable
26 GARLAND ST, TURVEY PARK NSW 2650	RES	NCA11	42	43	1	Noticeable
24 GARLAND ST, TURVEY PARK NSW 2650	RES	NCA11	42	43	1	Noticeable
19 GARLAND ST, TURVEY PARK NSW 2650	RES	NCA11	42	43	1	Noticeable
17 GARLAND ST, TURVEY PARK NSW 2650	RES	NCA11	42	43	1	Noticeable
23 GARLAND ST, TURVEY PARK NSW 2650	RES	NCA11	42	43	1	Noticeable
4 NORMAN ST, TURVEY PARK NSW 2650	RES	NCA11	42	43	1	Noticeable
6 KILDARE ST, TURVEY PARK NSW 2650	RES	NCA11	42	43	1	Noticeable
54 BROOKONG AV, WAGGA WAGGA NSW 2650	RES	NCA11	42	43	1	Noticeable

Results by Receiver

Address	Land Use	Noise Catchment Area	Construction Noise Management Level, dBA	Predicted Noise Level, dBA	Predicted Noise Level Above Noise Management Level, dB	Noise Category
50 BROOKKONG AV, WAGGA WAGGA NSW 2650	RES	NCA11	42	43	1	Noticeable
2 MURRAY ST, WAGGA WAGGA NSW 2650	RES	NCA11	42	43	1	Noticeable
37 BROOKKONG AV, WAGGA WAGGA NSW 2650	RES	NCA11	42	43	1	Noticeable
33 BROOKKONG AV, WAGGA WAGGA NSW 2650	RES	NCA11	42	43	1	Noticeable
31 BROOKKONG AV, WAGGA WAGGA NSW 2650	RES	NCA11	42	43	1	Noticeable
29 BROOKKONG AV, WAGGA WAGGA NSW 2650	RES	NCA11	42	43	1	Noticeable
6 MURRAY ST, WAGGA WAGGA NSW 2650	RES	NCA11	42	43	1	Noticeable
19 BROOKKONG AV, WAGGA WAGGA NSW 2650	RES	NCA11	42	43	1	Noticeable
7 YATHONG ST, WAGGA WAGGA NSW 2650	RES	NCA11	42	43	1	Noticeable
17 BROOKKONG AV, WAGGA WAGGA NSW 2650	RES	NCA11	42	43	1	Noticeable
15 BROOKKONG AV, WAGGA WAGGA NSW 2650	RES	NCA11	42	43	1	Noticeable
16 BROOKKONG AV, WAGGA WAGGA NSW 2650	RES	NCA11	42	43	1	Noticeable
13 MURRAY ST, WAGGA WAGGA NSW 2650	RES	NCA11	42	43	1	Noticeable

Results by Receiver

Address	Land Use	Noise Catchment Area	Construction Noise Management Level, dBA	Predicted Noise Level, dBA	Predicted Noise Level Above Noise Management Level, dB	Noise Category
14 BROOKONG AV, WAGGA WAGGA NSW 2650	RES	NCA11	42	43	1	Noticeable
14 MURRAY ST, WAGGA WAGGA NSW 2650	RES	NCA11	42	43	1	Noticeable
3 YABTREE ST, WAGGA WAGGA NSW 2650	RES	NCA11	42	43	1	Noticeable
5 YABTREE ST, WAGGA WAGGA NSW 2650	RES	NCA11	42	43	1	Noticeable
7 YABTREE ST, WAGGA WAGGA NSW 2650	RES	NCA11	42	43	1	Noticeable
3/6 LANGDON AV, WAGGA WAGGA NSW 2650	RES	NCA11	42	43	1	Noticeable
210 EDWARD ST, WAGGA WAGGA NSW 2650	RES	NCA11	42	43	1	Noticeable
14 FITZHARDINGE ST, WAGGA WAGGA NSW 2650	RES	NCA11	42	43	1	Noticeable
218 EDWARD ST, WAGGA WAGGA NSW 2650	RES	NCA11	42	43	1	Noticeable
224 EDWARD ST, WAGGA WAGGA NSW 2650	RES	NCA11	42	43	1	Noticeable
191 EDWARD ST, WAGGA WAGGA NSW 2650	RES	NCA11	42	43	1	Noticeable
8 THORNE ST, WAGGA WAGGA NSW 2650	RES	NCA11	42	43	1	Noticeable
4/11 FOX ST, WAGGA WAGGA NSW 2650	RES	NCA11	42	43	1	Noticeable

Results by Receiver

Address	Land Use	Noise Catchment Area	Construction Noise Management Level, dBA	Predicted Noise Level, dBA	Predicted Noise Level Above Noise Management Level, dB	Noise Category
27 HIGGINS AV, WAGGA WAGGA NSW 2650	RES	NCA11	42	43	1	Noticeable
25 HIGGINS AV, WAGGA WAGGA NSW 2650	RES	NCA11	42	43	1	Noticeable
13 THORNE ST, WAGGA WAGGA NSW 2650	RES	NCA11	42	43	1	Noticeable
23 HIGGINS AV, WAGGA WAGGA NSW 2650	RES	NCA11	42	43	1	Noticeable
7 JENNIFER PL, WAGGA WAGGA NSW 2650	RES	NCA11	42	43	1	Noticeable
239 EDWARD ST, WAGGA WAGGA NSW 2650	RES	NCA11	42	43	1	Noticeable
15 FOX ST, WAGGA WAGGA NSW 2650	RES	NCA11	42	43	1	Noticeable
20 FOX ST, WAGGA WAGGA NSW 2650	RES	NCA11	42	43	1	Noticeable
245 EDWARD ST, WAGGA WAGGA NSW 2650	RES	NCA11	42	43	1	Noticeable
18 THORNE ST, WAGGA WAGGA NSW 2650	RES	NCA11	42	43	1	Noticeable
63 TARCUTTA ST, WAGGA WAGGA NSW 2650	OHO	NCA11	45	46	1	Noticeable
4/241-243 EDWARD ST, WAGGA WAGGA NSW 2650	RES	NCA11	42	43	1	Noticeable
6/263 EDWARD ST, WAGGA WAGGA NSW 2650	RES	NCA11	42	43	1	Noticeable

Results by Receiver

Address	Land Use	Noise Catchment Area	Construction Noise Management Level, dBA	Predicted Noise Level, dBA	Predicted Noise Level Above Noise Management Level, dB	Noise Category
38 MURRAY ST, WAGGA WAGGA NSW 2650	RES	NCA11	42	43	1	Noticeable
25 FOX ST, WAGGA WAGGA NSW 2650	RES	NCA11	42	43	1	Noticeable
33 BEST ST, WAGGA WAGGA NSW 2650	RES	NCA11	42	43	1	Noticeable
30 THORNE ST, WAGGA WAGGA NSW 2650	RES	NCA11	42	43	1	Noticeable
48 MURRAY ST, WAGGA WAGGA NSW 2650	RES	NCA11	42	43	1	Noticeable
34 THORNE ST, WAGGA WAGGA NSW 2650	RES	NCA11	42	43	1	Noticeable
2/10 DAY ST, WAGGA WAGGA NSW 2650	RES	NCA11	42	43	1	Noticeable
73 TARCUTTA ST, WAGGA WAGGA NSW 2650	RES	NCA11	42	43	1	Noticeable
36 THORNE ST, WAGGA WAGGA NSW 2650	RES	NCA11	42	43	1	Noticeable
38 THORNE ST, WAGGA WAGGA NSW 2650	RES	NCA11	42	43	1	Noticeable
44 FOX ST, WAGGA WAGGA NSW 2650	RES	NCA11	42	43	1	Noticeable
77 TARCUTTA ST, WAGGA WAGGA NSW 2650	RES	NCA11	42	43	1	Noticeable
10 DAY ST, WAGGA WAGGA NSW 2650	RES	NCA11	42	43	1	Noticeable
79 TARCUTTA ST, WAGGA WAGGA NSW 2650	RES	NCA11	42	43	1	Noticeable

Results by Receiver

Address	Land Use	Noise Catchment Area	Construction Noise Management Level, dBA	Predicted Noise Level, dBA	Predicted Noise Level Above Noise Management Level, dB	Noise Category
42 THORNE ST, WAGGA WAGGA NSW 2650	RES	NCA11	42	43	1	Noticeable
48 FOX ST, WAGGA WAGGA NSW 2650	RES	NCA11	42	43	1	Noticeable
SERENITY 6/18 DAY ST, WAGGA WAGGA NSW 2650	RES	NCA11	42	43	1	Noticeable
50 FOX ST, WAGGA WAGGA NSW 2650	RES	NCA11	42	43	1	Noticeable
3/85 TARCUTTA ST, WAGGA WAGGA NSW 2650	RES	NCA11	42	43	1	Noticeable
49 BEST ST, WAGGA WAGGA NSW 2650	RES	NCA11	42	43	1	Noticeable
51 BEST ST, WAGGA WAGGA NSW 2650	RES	NCA11	42	43	1	Noticeable
121 MORGAN ST, WAGGA WAGGA NSW 2650	RES	NCA11	42	43	1	Noticeable
58 PETER ST, WAGGA WAGGA NSW 2650	RES	NCA11	42	43	1	Noticeable
119 MORGAN ST, WAGGA WAGGA NSW 2650	RES	NCA11	42	43	1	Noticeable
52 FOX ST, WAGGA WAGGA NSW 2650	RES	NCA11	42	43	1	Noticeable
123 MORGAN ST, WAGGA WAGGA NSW 2650	RES	NCA11	42	43	1	Noticeable
133 MORGAN ST, WAGGA WAGGA NSW 2650	RES	NCA11	42	43	1	Noticeable

Results by Receiver

Address	Land Use	Noise Catchment Area	Construction Noise Management Level, dBA	Predicted Noise Level, dBA	Predicted Noise Level Above Noise Management Level, dB	Noise Category
62 PETER ST, WAGGA WAGGA NSW 2650	RES	NCA11	42	43	1	Noticeable
60 BEST ST, WAGGA WAGGA NSW 2650	RES	NCA11	42	43	1	Noticeable
64 PETER ST, WAGGA WAGGA NSW 2650	RES	NCA11	42	43	1	Noticeable
62 BEST ST, WAGGA WAGGA NSW 2650	RES	NCA11	42	43	1	Noticeable
3/53 FOX ST, WAGGA WAGGA NSW 2650	RES	NCA11	42	43	1	Noticeable
66 PETER ST, WAGGA WAGGA NSW 2650	RES	NCA11	42	43	1	Noticeable
60 FOX ST, WAGGA WAGGA NSW 2650	RES	NCA11	42	43	1	Noticeable
7/5 BENTLEY PL, WAGGA WAGGA NSW 2650	RES	NCA11	42	43	1	Noticeable
68 PETER ST, WAGGA WAGGA NSW 2650	RES	NCA11	42	43	1	Noticeable
64 BEST ST, WAGGA WAGGA NSW 2650	RES	NCA11	42	43	1	Noticeable
70 PETER ST, WAGGA WAGGA NSW 2650	RES	NCA11	42	43	1	Noticeable
63 BEST ST, WAGGA WAGGA NSW 2650	RES	NCA11	42	43	1	Noticeable
66 BEST ST, WAGGA WAGGA NSW 2650	RES	NCA11	42	43	1	Noticeable
57 FOX ST, WAGGA WAGGA NSW 2650	RES	NCA11	42	43	1	Noticeable

Results by Receiver

Address	Land Use	Noise Catchment Area	Construction Noise Management Level, dBA	Predicted Noise Level, dBA	Predicted Noise Level Above Noise Management Level, dB	Noise Category
58 THORNE ST, WAGGA WAGGA NSW 2650	RES	NCA11	42	43	1	Noticeable
70A PETER ST, WAGGA WAGGA NSW 2650	RES	NCA11	42	43	1	Noticeable
8 SMALL ST, WAGGA WAGGA NSW 2650	RES	NCA11	42	43	1	Noticeable
70 BEST ST, WAGGA WAGGA NSW 2650	RES	NCA11	42	43	1	Noticeable
2/110 TARCUTTA ST, WAGGA WAGGA NSW 2650	RES	NCA11	42	43	1	Noticeable
80 BEST ST, WAGGA WAGGA NSW 2650	RES	NCA11	42	43	1	Noticeable
3/1 SMALL ST, WAGGA WAGGA NSW 2650	RES	NCA11	42	43	1	Noticeable
101 FORSYTH ST, WAGGA WAGGA NSW 2650	RES	NCA11	42	43	1	Noticeable
60 PETER ST, WAGGA WAGGA NSW 2650	RES	NCA11	42	43	1	Noticeable
2 DAY ST, WAGGA WAGGA NSW 2650	OHO	NCA11	45	46	1	Noticeable

Recommended Mitigation Measures

This assessment has been conducted with regard to the relevant CNVIS and CNVMP. To manage noise and vibration impacts, project specific mitigation measures may be considered such as reviewing construction staging methodology to identify opportunities to schedule intensive works during less sensitive time periods and by providing a clear process for community engagement and complaints. Likewise, the requirements and actionable items within the overarching CNVIS and CNVMP should be considered and adopted where appropriate. Following the consideration of project specific noise mitigation measures, additional noise mitigation measures to be explored are described in the Inland Rail NSW Construction Noise and Vibration Framework (CNVF) and summarised below.

Airborne Noise - Additional Mitigation Measures Matrix				
Time Period	Exceedance of NML	Perception	Duration	Communication Category/Management Measure
OOHW Daytime Period Sunday 7am - 6pm (including public holidays)	<5	Noticeable	Any	CO1
	5 - 15	Clearly audible	Any	CO1
	16 - 25	Moderately intrusive	Any	CO1, CO2
	>25	Highly intrusive	Any	CO1, CO2
OOHW Evening Period Monday - Sunday 6pm - 10pm (including public holidays)	<5	Noticeable	Any	CO1
	5 - 15	Clearly audible	Any	CO1
	16 - 25	Moderately intrusive	Any	CO1, CO2
	>25	Highly intrusive	Any >2 consecutive rest periods	CO1, CO2
OOHW Night Period Monday - Sunday 10pm - 7am (including public holidays)	<5	Noticeable	Any	CO1
	5 - 15	Clearly audible	Any	CO1
	16 - 25	Moderately intrusive	Any	CO1, CO2
			>2 consecutive sleep periods	CO1, CO2, RO, AO
	>25	Highly intrusive	Any >2 consecutive sleep periods	CO1, CO2, RO, AO, AltA

Vibration - Additional Mitigation Measures Matrix

Time Period	Duration	Exceedance of 'preferred' value	Exceedance of 'maximum' value
OOHW Daytime Period Sunday 8am-6pm	Any	CO1, CO2	CO1, CO2, RO
OOHW Evening Period Mon-Sun 6pm-10pm	Any	CO1, CO2	CO1, CO2, RO
OOHW Night Period Mon-Sat 10pm-7am Sun 10pm-8am	Any	CO1, CO2, RO	CO1, CO2, RO, AltA

Additional Mitigation Measures

Measure	Abbreviation
Communication (Category 1) ¹	CO1
Communication (Category 2) ²	CO2
Respite Offer ³	RO
Alternative Accommodation	AltA
Agreement with Owners	AO

Note 1: CO1: Communication to provide information on the OOHW via methods such as letter box drop, email, newsletter, media advertisements and/ or website prior to the works commencing.

Note 2: CO2: Communication should be personalised (e.g. door knock, meeting, telephone call). Contact with these residents should commence early to enable feedback to be considered by the proposal.

Note 3: RO are not applicable to non-residential receivers. RO may comprise of pre-purchased movie tickets, dinner vouchers or similar. RO can also be provided by limiting high noise generating works and allowing at least a one-hour respite period between blocks of work. Where possible, the timing of this respite should be discussed with the impacted community.

Receiver Types

Code	Description	Code	Description
RES	Residential	OED	Other Educational
COM	Commercial	OHO	Other Hotel
IND	Industrial	OLI	Other Library
OOA	Other Outdoor Active Recreation	OME	Other Medical
OOP	Other Outdoor Passive Recreation	OPW	Other Place of Worship
OCC	Other Child Care	OPB	Other Public Building



APPENDIX C

SLR Predict (W.008A) – Noise



Construction Noise and Vibration Impact Statement (CNVIS)

This report presents the outcomes of detailed noise/vibration modelling relating to specific construction activities proposed on site in accordance with the methodology outlined in the *Construction Noise and Vibration Management Plan (CNVMP)* and overarching *Construction Noise and Vibration Impact Statement (CNVIS)*.

Prior to detailed noise/vibration modelling being undertaken, work activities are reviewed and considered in relation to industry best practice, consistent with the requirements of the CNVMP. Consideration is first given to eliminating the noise/vibration emissions so far as reasonably practicable. Where elimination is not practicable, efforts are made to reduce the risk as far as practical by implementing noise and vibration management measures as outlined in the overarching CNVIS and CNVMP.

Examples of these measures include selecting the quietest equipment and processes to complete the works, considering staging and periods of respite to minimise prolonged periods of noise and vibration exposure, and maximising distances between construction activities and sensitive receivers.

Consultation with Affected Receivers

In accordance with CoA E78, the CNVIS must include specific mitigation measures identified through consultation with affected sensitive land user(s) and the mitigation measures must be implemented for the duration of the Work. Details of this consultation are provided in the overarching CNVIS for each enhancement site.

Predicted Noise Levels

The assessment presents the highest predicted level at each receiver building, considering predictions at each floor and façade from all potential work areas. The assessment is generally considered conservative as the calculations assume several items of construction equipment are in use at the same time within each work area. The assessment uses 'realistic worst-case' scenarios to determine the impacts from the noisiest 15-minute period that is likely to occur for each work scenario.

Assessment Details

Author Name	
Author Email	noiseassessments@martinus.com.au
Author Organisation	Martinus Rail
Project Name	A2I - Albury to Illabo
Assessment Name	Wagga/Edmondson ADD1 - W.008A
Assessment Number	418
Stage	A2I Construction
Permit Number	N/A
Start Date	2026-04-06
End Date	2026-04-06
Assessment Period	Day - out of hours

Equipment Details

Plant/Equipment	Equipment Sound Power Level (Unadjusted), dBA	Number of Units	Temporary Noise Barrier
1: W.008A (Height: Ground)	Total: 108		
Hand tools (electric) 100% operation	102	3	No
Light Vehicle (accelerating) 100% operation	95	3	No

Note 1: Equipment classed as 'annoying' in the *Interim Construction Noise Guideline (DECC, 2009)* include a 5 dB correction.

Note 2: Equipment sound power levels consider the mitigation measures outlined in the overarching CNVIS to provide mitigated results.

Assessment Results



	Residential	Non-Residential
 Highly Intrusive	0 property	0 property
 Moderately Intrusive	0 property	0 property
 Clearly Audible	9 properties	0 property
 Noticeable	5 properties	0 property

Legend

- Project Boundary
- Work Areas
- Barriers

Results by Receiver

Address	Land Use	Noise Catchment Area	Construction Noise Management Level, dBA	Predicted Noise Level, dBA	Predicted Noise Level Above Noise Management Level, dB	Noise Category
90 RAILWAY ST, TURVEY PARK NSW 2650	RES	NCA11	53	63	10	Clearly Audible
94 RAILWAY ST, TURVEY PARK NSW 2650	RES	NCA11	53	63	10	Clearly Audible
88 RAILWAY ST, TURVEY PARK NSW 2650	RES	NCA11	53	62	9	Clearly Audible
92 RAILWAY ST, TURVEY PARK NSW 2650	RES	NCA11	53	62	9	Clearly Audible
96 RAILWAY ST, TURVEY PARK NSW 2650	RES	NCA11	53	62	9	Clearly Audible
14 STATION PL, WAGGA WAGGA NSW 2650	RES	NCA11	53	61	8	Clearly Audible
86 RAILWAY ST, TURVEY PARK NSW 2650	RES	NCA11	53	60	7	Clearly Audible
82 RAILWAY ST, TURVEY PARK NSW 2650	RES	NCA11	53	59	6	Clearly Audible
84 RAILWAY ST, TURVEY PARK NSW 2650	RES	NCA11	53	59	6	Clearly Audible
1 ERIN ST, TURVEY PARK NSW 2650	RES	NCA11	53	58	5	Noticeable

Results by Receiver

Address	Land Use	Noise Catchment Area	Construction Noise Management Level, dBA	Predicted Noise Level, dBA	Predicted Noise Level Above Noise Management Level, dB	Noise Category
80 RAILWAY ST, TURVEY PARK NSW 2650	RES	NCA11	53	57	4	Noticeable
2 MACLEAY ST, TURVEY PARK NSW 2650	RES	NCA11	53	55	2	Noticeable
4 MACLEAY ST, TURVEY PARK NSW 2650	RES	NCA11	53	54	1	Noticeable
3/21 COLLINS ST, TURVEY PARK NSW 2650	RES	NCA11	53	54	1	Noticeable

Recommended Mitigation Measures

This assessment has been conducted with regard to the relevant CNVIS and CNVMP. To manage noise and vibration impacts, project specific mitigation measures may be considered such as reviewing construction staging methodology to identify opportunities to schedule intensive works during less sensitive time periods and by providing a clear process for community engagement and complaints. Likewise, the requirements and actionable items within the overarching CNVIS and CNVMP should be considered and adopted where appropriate. Following the consideration of project specific noise mitigation measures, additional noise mitigation measures to be explored are described in the Inland Rail NSW Construction Noise and Vibration Framework (CNVF) and summarised below.

Airborne Noise - Additional Mitigation Measures Matrix				
Time Period	Exceedance of NML	Perception	Duration	Communication Category/Management Measure
OOHW Daytime Period Sunday 7am - 6pm (including public holidays)	<5	Noticeable	Any	CO1
	5 - 15	Clearly audible	Any	CO1
	16 - 25	Moderately intrusive	Any	CO1, CO2
	>25	Highly intrusive	Any	CO1, CO2
OOHW Evening Period Monday - Sunday 6pm - 10pm (including public holidays)	<5	Noticeable	Any	CO1
	5 - 15	Clearly audible	Any	CO1
	16 - 25	Moderately intrusive	Any	CO1, CO2
	>25	Highly intrusive	Any >2 consecutive rest periods	CO1, CO2
OOHW Night Period Monday - Sunday 10pm - 7am (including public holidays)	<5	Noticeable	Any	CO1
	5 - 15	Clearly audible	Any	CO1
	16 - 25	Moderately intrusive	Any	CO1, CO2
			>2 consecutive sleep periods	CO1, CO2, RO, AO
	>25	Highly intrusive	Any >2 consecutive sleep periods	CO1, CO2, RO, AO, AltA

Vibration - Additional Mitigation Measures Matrix

Time Period	Duration	Exceedance of 'preferred' value	Exceedance of 'maximum' value
OOHW Daytime Period Sunday 8am-6pm	Any	CO1, CO2	CO1, CO2, RO
OOHW Evening Period Mon-Sun 6pm-10pm	Any	CO1, CO2	CO1, CO2, RO
OOHW Night Period Mon-Sat 10pm-7am Sun 10pm-8am	Any	CO1, CO2, RO	CO1, CO2, RO, AltA

Additional Mitigation Measures

Measure	Abbreviation
Communication (Category 1) ¹	CO1
Communication (Category 2) ²	CO2
Respite Offer ³	RO
Alternative Accommodation	AltA
Agreement with Owners	AO

Note 1: CO1: Communication to provide information on the OOHW via methods such as letter box drop, email, newsletter, media advertisements and/ or website prior to the works commencing.

Note 2: CO2: Communication should be personalised (e.g. door knock, meeting, telephone call). Contact with these residents should commence early to enable feedback to be considered by the proposal.

Note 3: RO are not applicable to non-residential receivers. RO may comprise of pre-purchased movie tickets, dinner vouchers or similar. RO can also be provided by limiting high noise generating works and allowing at least a one-hour respite period between blocks of work. Where possible, the timing of this respite should be discussed with the impacted community.

Receiver Types

Code	Description	Code	Description
RES	Residential	OED	Other Educational
COM	Commercial	OHO	Other Hotel
IND	Industrial	OLI	Other Library
OOA	Other Outdoor Active Recreation	OME	Other Medical
OOP	Other Outdoor Passive Recreation	OPW	Other Place of Worship
OCC	Other Child Care	OPB	Other Public Building