

# Construction update

## Wagga Wagga

### June - July 2026

During normal construction hours **7am – 6pm Monday to Saturday**, our construction crews will continue with the following works:

#### Edmondson St bridge

- Piling works to support the new bridge, are completed on the Sturt Highway side of the bridge and have commenced on the Turvey Park side of Edmondson bridge.
- Excavation and foundation preparation works, including blinding concrete and pile trimming once piles are complete.
- Building bridge foundations (pile caps), including excavation, steel reinforcement, formwork and concrete pours.
- Scaffolding installation for concrete support wall near new bridge abutments (late June).
- Localised ground improvement works

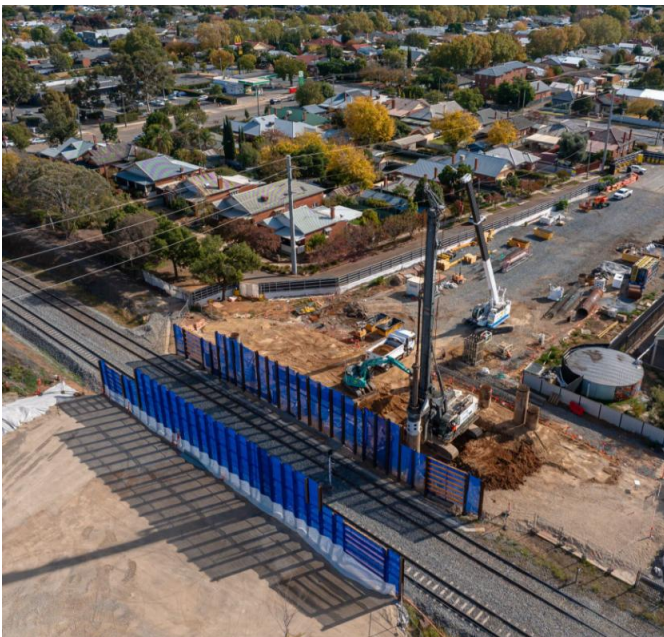


Photo: Edmondson bridge piling works May 2026

#### Mothers Bridge – Wagga Wagga *Mothers bridge remains open during construction.*

- Pedestrian footpath realignment on Railway St to allow for new bridge ramp construction.
- Installing reinforcement and temporary support (falsework/propping) for bridge columns, ramp piers, and headstocks.
- Concrete pours for key structural elements (including headstocks and ramp piers), followed by curing periods.
- Ongoing delivery and installation of bridge components and connection works as construction progresses.
- The main bridge span for the new footbridge and girders is expected to arrive in July. This delivery will be conducted out of normal construction hours and will require traffic controls due to the length of the bridge span.



Photo new Mothers bridge ramp columns May 2026

☎ 1800 732 761    @ inlandrailnsw@inlandrail.com.au

✉ Suite 19.02, Level 19, 60 Margaret Street, Sydney

🗣 Please call our free translation and interpreter service on **131 450** (24 hours a day) if English is your second language and you need help reading this document

## Cassidy footbridge

### **Cassidy bridge remains open during construction works – temporary footbridge diversion in place**

- Open temporary scaffold footbridge including pedestrian diversion via Fox Street.
- Closure of Brookong Ave access to the existing footbridge prior to demolition (June)
- Disconnection of services and site preparation works prior to bridge demolition
- Demolition and removal of Cassidy footbridge
- Pile cap construction (formwork, reinforcement and concrete pours)
- Substructure works including pile breakback, excavation and quality testing
- Receiving structural steel components for assembly on site.



Photo: Cassidy temporary scaffold bridge mid construction May 2026

## Wagga Wagga rail yard

- Geotechnical investigations to help guide upcoming construction
- Trackwork and ballast delivery to maintain and upgrade rail infrastructure
- Track tamping works to level and stabilise the track in position
- Ongoing service investigations, including locating and protecting underground utilities
- Shoulder reconditioning - improving the sides of the railway track to keep it stable, well-drained, and safe.
- Signalling works to support track diversion including testing
- Drainage works as required



Photo: Wagga Wagga Station site works



Map Cassidy footbridge temporary detour

## Pearson St bridge

- Site clearance and access preparation (including establishment of work areas, fencing and laydown)
- Relocation and protection of underground services, including water and gas infrastructure
- Piling works to support the installation of deflection walls
- Capping beam works, including excavation, base preparation, pile breakback, formwork and concrete works.
- Track works in the rail corridor, tamping, track reinstatement and monitoring.
- Ongoing preparation for drainage and other enabling works to support track lowering.

☎ 1800 732 761 @ inlandrailnsw@inlandrail.com.au

✉ Suite 19.02, Level 19, 60 Margaret Street, Sydney

🗣 Please call our free translation and interpreter service on 131 450 (24 hours a day) if English is your second language and you need help reading this document

- Water carts to be used on exposed surfaces, stockpiles to be covered and monitoring of wind speeds to reduce dust from construction activities.

Thank you for your continued patience and cooperation while we carry out these works. . If you have any questions, please call 1800 732 761 or email [inlandrailnsw@inland.com.au](mailto:inlandrailnsw@inland.com.au).



Photo: Pearson St bridge May Possession

## Bomen Yard & Harefield Yard

- Surveying and early enabling works including service locating and geotechnical investigation.
- Approved ground clearing including vegetation to prepare for future construction.
- Site establishment as a laydown area for construction activities.
- Approved stockpiling on site.

## Machinery Used

Ongoing works will see an increase in heavy vehicle and specialised equipment around work zones. These include large cranes, piling rigs, excavators, tippers, truck and dogs, water cars and handheld tools.

## How we are managing impacts


- Approved detours and traffic control will be used as needed around work areas, with awareness of heavy vehicles near residential and school zones.
- Please take care around trucks, noting reduced visibility, and use marked pedestrian crossings and footpaths.
- Deliveries will be scheduled to avoid morning and afternoon bell times.
- Site based monitoring of noise, dust and vibration will be conducted in accordance with our environmental approvals.



Map: Edmondson St Bridge

☎ 1800 732 761    @ [inlandrailnsw@inlandrail.com.au](mailto:inlandrailnsw@inlandrail.com.au)

✉ Suite 19.02, Level 19, 60 Margaret Street, Sydney

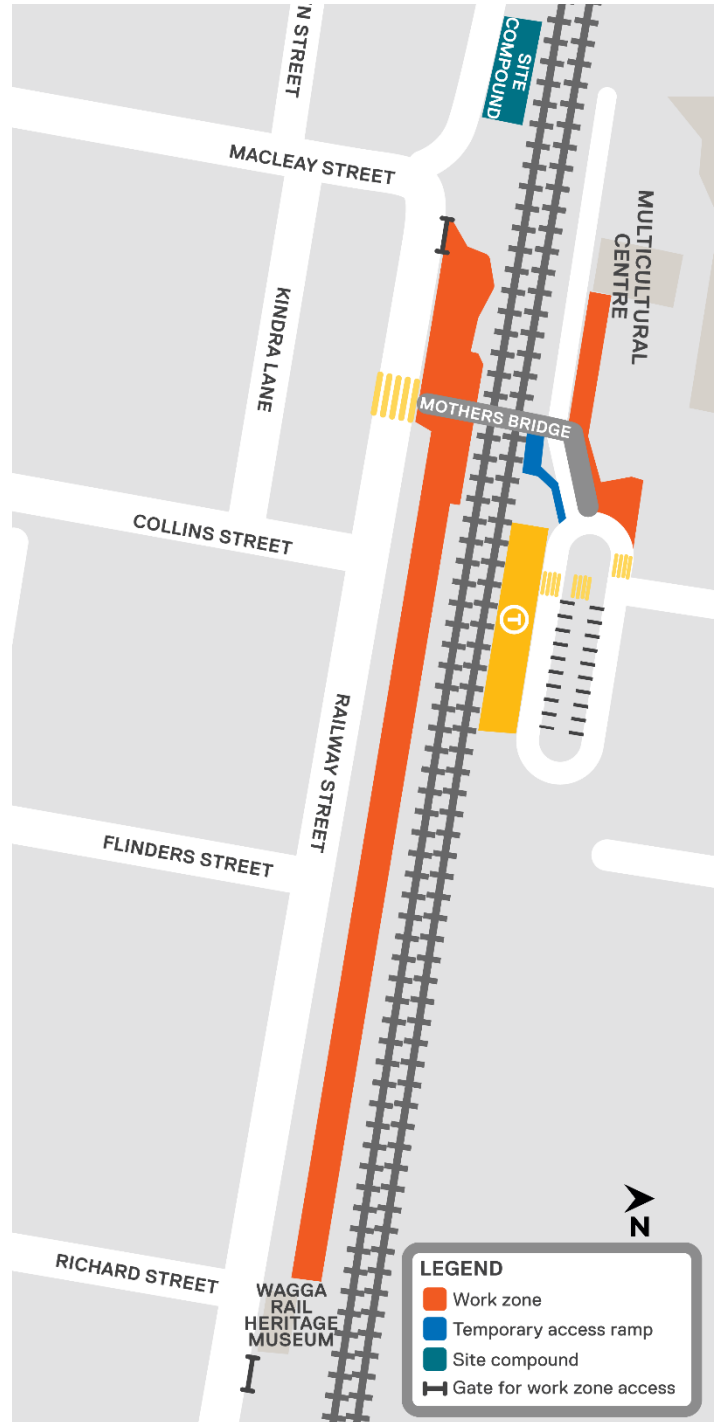
 Please call our free translation and interpreter service on **131 450** (24 hours a day) if English is your second language and you need help reading this *document*



Map Cassidy footbridge pedestrian detour map



Map: Pearson St work zone



Map: Mothers bridge site

☎ 1800 732 761    @ inlandrailnsw@inlandrail.com.au

✉ Suite 19.02, Level 19, 60 Margaret Street, Sydney

🗣 Please call our free translation and interpreter service on 131 450 (24 hours a day) if English is your second language and you need help reading this document